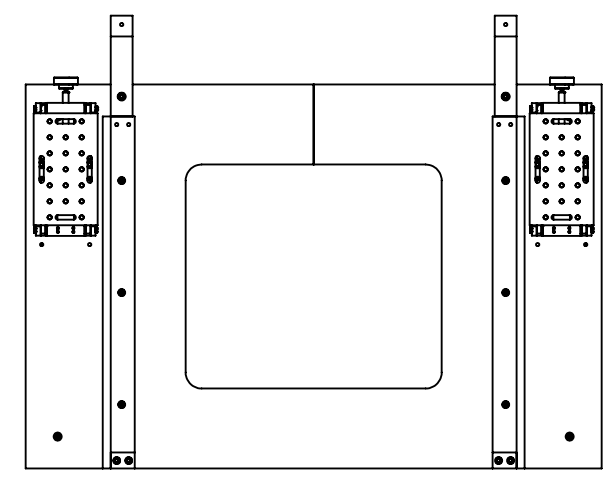
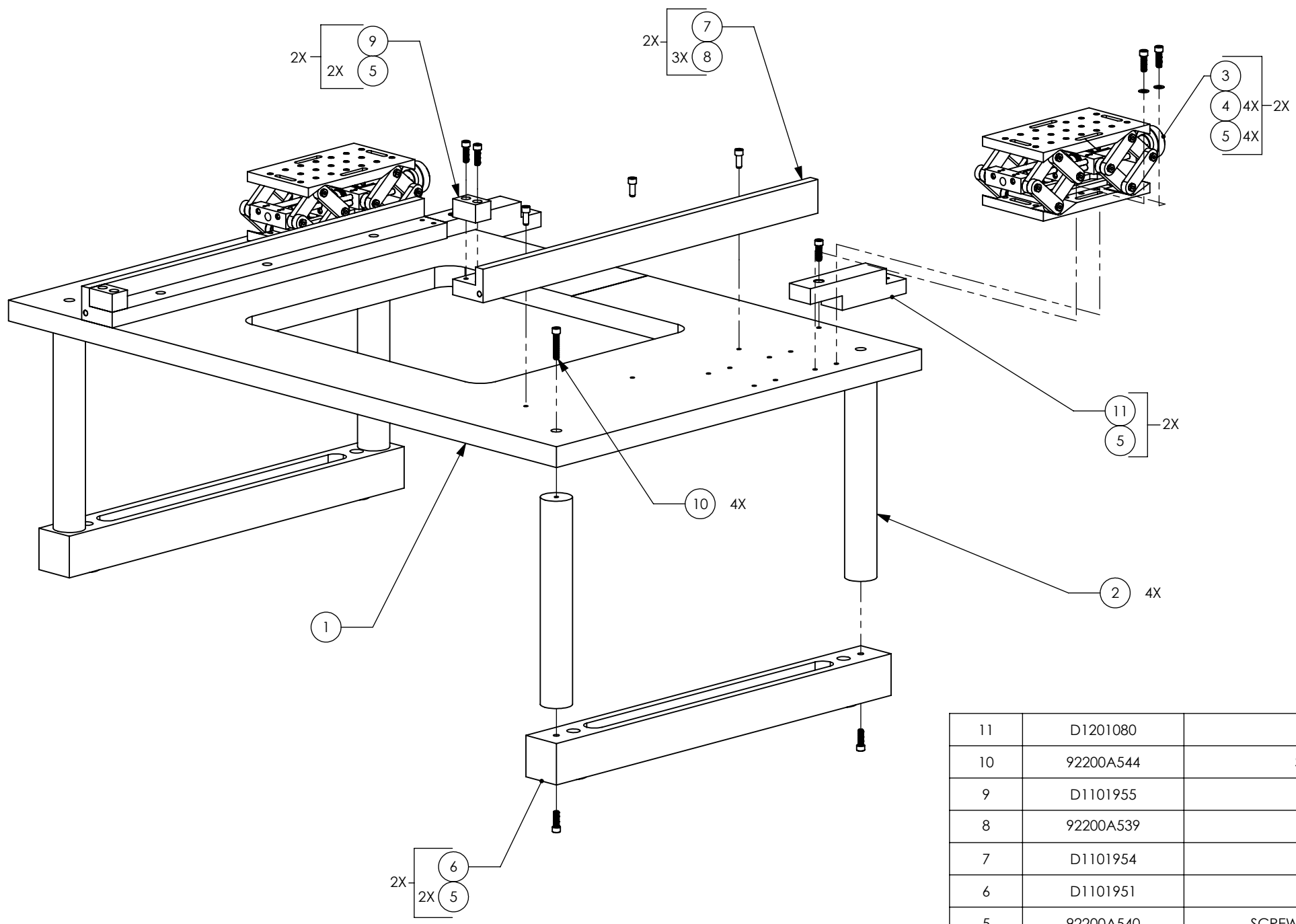


8 7 6 5 4 3 2 1

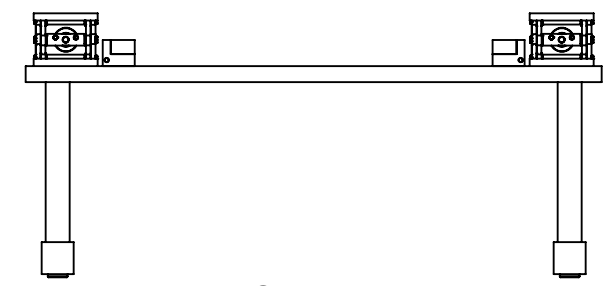
NOTES CONTINUED:  
6. APPROXIMATE WEIGHT = 93.5 LB.

REV.	DATE	DCN #	DRAWING TREE #
v1	18 OCT 2011	E1100335	-
v2	2 AUG 2012	E1200335	-
-	-	-	-

D  
C  
B  
A



TOP VIEW



FRONT VIEW

ITEM NO.	PART NUMBER	DESCRIPTION	MATERIAL	REQ	SPARE	TOTAL
11	D1201080	EXTENDED JOINT	6061-T6 Al	2		2
10	92200A544	SCREW, SHC, .25-20 X 1.25 LG., MS16995-53	300 SSSL	4		4
9	D1101955	STOP, SUSPENSION TABLE	6061-T6 Al	2		2
8	92200A539	SHCS, .25-20 x .62 Lg., MS16995-49	300 SSSL	6		6
7	D1101954	RAIL, SUSPENSION TABLE	6061-T6 Al	2		2
6	D1101951	LEG, SUPPORT, SUSPENSION TABLE	6061-T6 Al	2		2
5	92200A540	SCREW, SHC, 1/4-20 x 3/4, MS16995-50, MC #92200A540	300 SSSL	18		18
4	90945A760	Washer, Flat, .25 x .47 OD, NAs620-C416L	300 SSSL	8		8
3	1708-E0W	JACK, LAB, HEAVY DUTY, 7 X 4, THOR L490	ALUMINUM/SSSL	2		2
2	D1102063	LEG, SUSPENSION TABLE	6061-T6 Al	4		4
1	D1102061	TABLE, SUSPENSION LIFT	6061-T6 Al	1		1
ITEM NO.	PART NUMBER	DESCRIPTION	MATERIAL	REQ	SPARE	TOTAL

NOTES AND TOLERANCES: (UNLESS OTHERWISE SPECIFIED)

DIMENSIONS ARE IN  
TOLERANCES:  
.XX ± .01  
.XXX ± .005  
ANGULAR ± .5°

1. INTERPRET DRAWING PER ASME Y14.5-1994.  
2. REMOVE ALL SHARP EDGES, .005-.015, FOR MACHINED PARTS. ROUND ALL EDGES APPROXIMATELY R.02 FOR SHEET METAL PARTS.  
3. DO NOT SCALE FROM DRAWING.  
4. ALL MACHINING FLUIDS MUST BE FULLY SYNTHETIC, FULLY WATER SOLUBLE AND FREE OF SULFUR, SILICONE, AND CHLORINE.

MATERIAL N/A FINISH N/A μinch

**LIGO** CALIFORNIA INSTITUTE OF TECHNOLOGY  
MASSACHUSETTS INSTITUTE OF TECHNOLOGY

SYSTEM ADVANCED LIGO SUB-SYSTEM AOS

PART NAME SUSPENSION LIFT ASSEMBLY

DESIGNER DRAFTER CHECKER APPROVAL

MRUIZ 18 OCT 2011

SIZE DWG. NO. B D1101953 REV. v2

SCALE: 1:6 PROJECTION: SHEET 1 OF 1

D1101953, SUSPENSION LIFT ASSEMBLY, PART PDM REV: X-015, DRAWING PDM REV: X-009

8 7 6 5 4 3 2 1