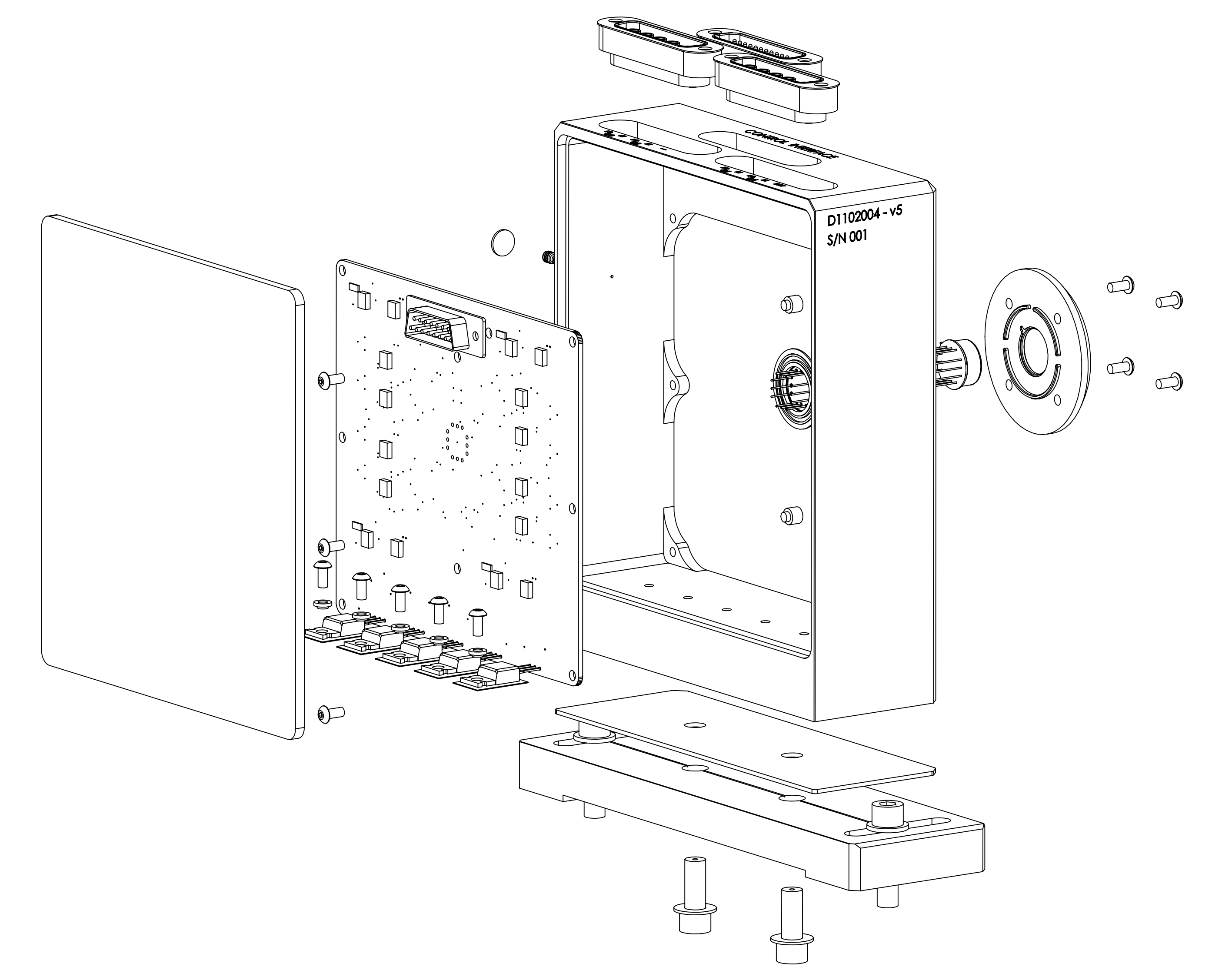
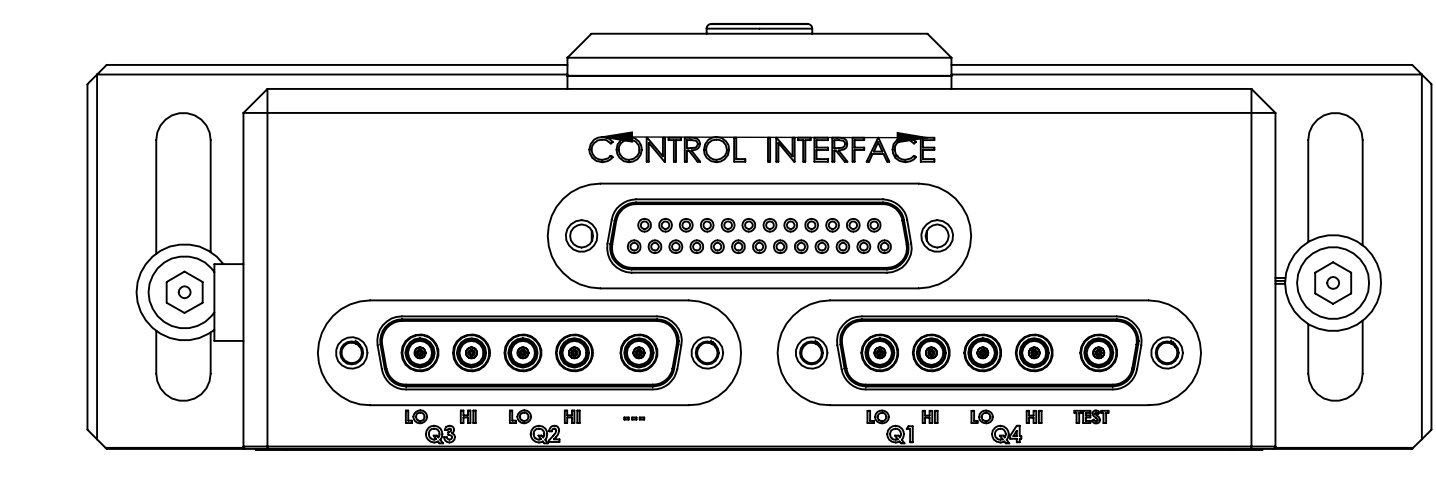
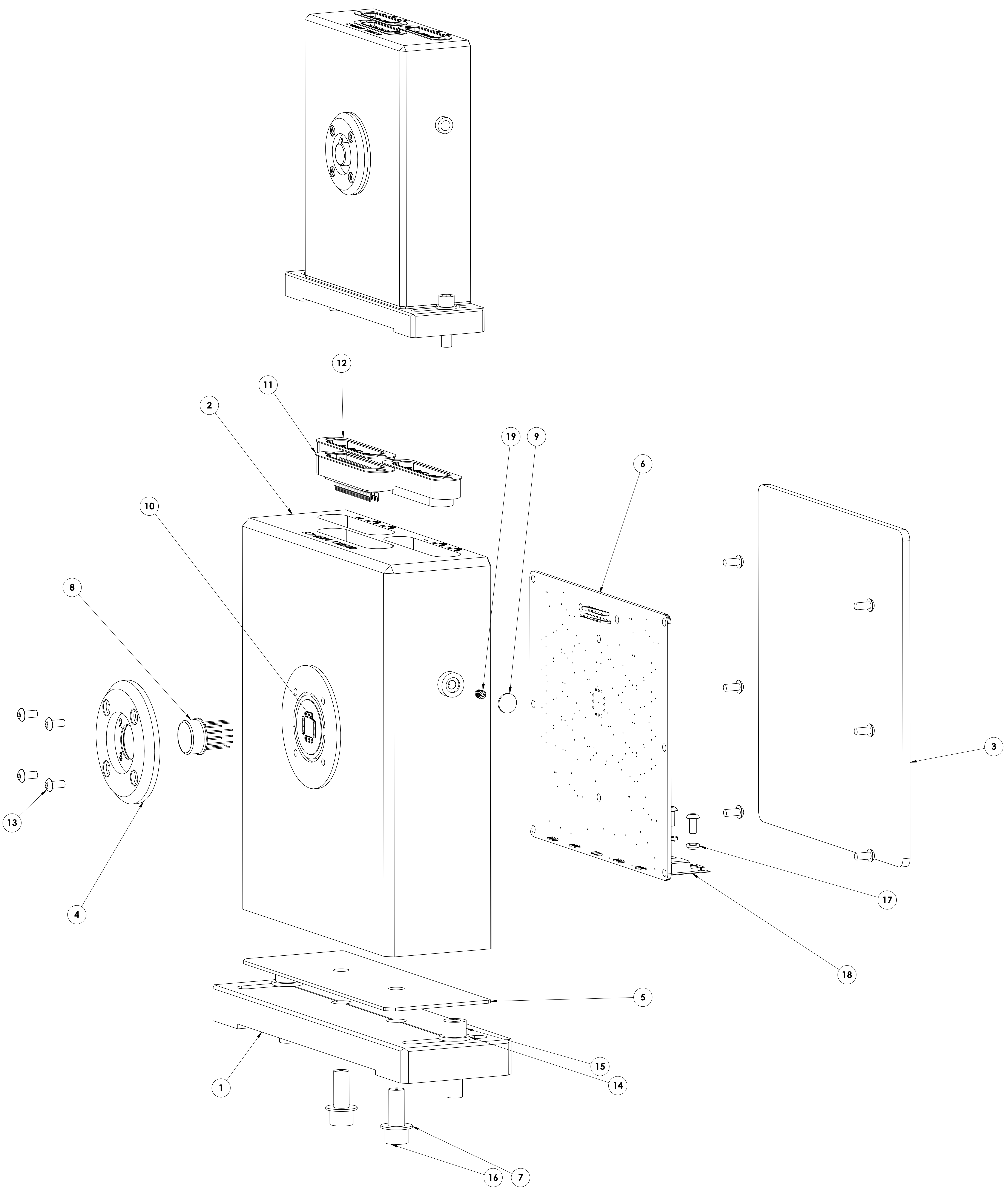


REV.	DATE	DCN #	DRAWING TREE #
V5	30 AUG 2012	E1200796	
V6	11 SEP 2012	E1200819	



ITEM NO.	PART NUMBER	DESCRIPTION	MATERIAL	REQ	SPARE	TOTAL
19	McMASTER 92311A143	SCREW PLUG, FILL PORT, GAS	18-8 SSTL	1		1
18	BER103-ND	PAD	Material <not specified>	5		5
17	TO-220	SHOULDER WASHER FOR #4 SCREW	Material <not specified>	5		5
16	UCC C-2010	SHCS 1/4-20 X .75" 18-8 VENTED	18-8 SSTL	2		2
15	UCC C-2016	SHCS 1/4-20 x 1" 18-8 Vented	18-8 SSTL	2		2
14	McMASTER 90313A 203	WASHER FLAT .26 ID X .50 OD X .05 THK	18-8 SSTL	2		2
13	UCC C-403	BHCS 4-40 X 3/16" 18-8 Vented	18-8 SSTL	15		15
12		WELD IN, MALE 5-WAY COAX CON, FOR VACUUM	Material <not specified>	2		2
11		WELD IN, MALE DB25 CONNECTOR, FOR VACUUM	Material <not specified>	1		1
10	930182-2	ASC IN VAC PHOTODIODE SOCKET	Material <not specified>	1		1
9	190046-1	WELD PLUG, PUCK, VACUUM PORT	6061-T6 Al	1		1
8		InGaAs-3000 QPD		1		1
7	D1102010	ASC VAC ENCLOSURE - PEEK WASHER kt250 oad511 th031	PEEK	2		2
6	D1102009	ASC VAC PCB ASSEMBLY		1		1
5	D1102007	ASC VAC Enclosure - alumina spacer alLIGO	ALUMINA	1		1
4	D1102006	ASC VAC Enclosure - photo hood bracket alLIGO	6061-T6 Al	1		1
3	D1102005	ASC VAC ENCLOSURE - LID alLIGO	6061-T6 Al	1		1
2	D1102004	ASC VAC Enclosure - main body alLIGO	6061-T6 Al	1		1
1	D1102003	ASC VAC Enclosure - BASE alLIGO	6061-T6 Al	1		1

NOTES AND TOLERANCES: (UNLESS OTHERWISE SPECIFIED)		CALIFORNIA INSTITUTE OF TECHNOLOGY MASSACHUSETTS INSTITUTE OF TECHNOLOGY		PART NAME ASC VAC Enclosure TOP ASSEM alLIGO	
MATERIAL		SYSTEM ADVANCED LIGO		SUB-SYSTEM ISC	
FINISH		DESIGNER RABBOTT		DATE JUL 2012	
NEXT ASSY		DRAFTER SBARRUM		SIZE E	
		CHECKER RABBOTT		DWG. NO. D1102002	
		APPROVAL PRRITSCHEL		REV. v6	
		SCALE: 1:1		PROJECTION:	
				SHEET 1 OF 1	