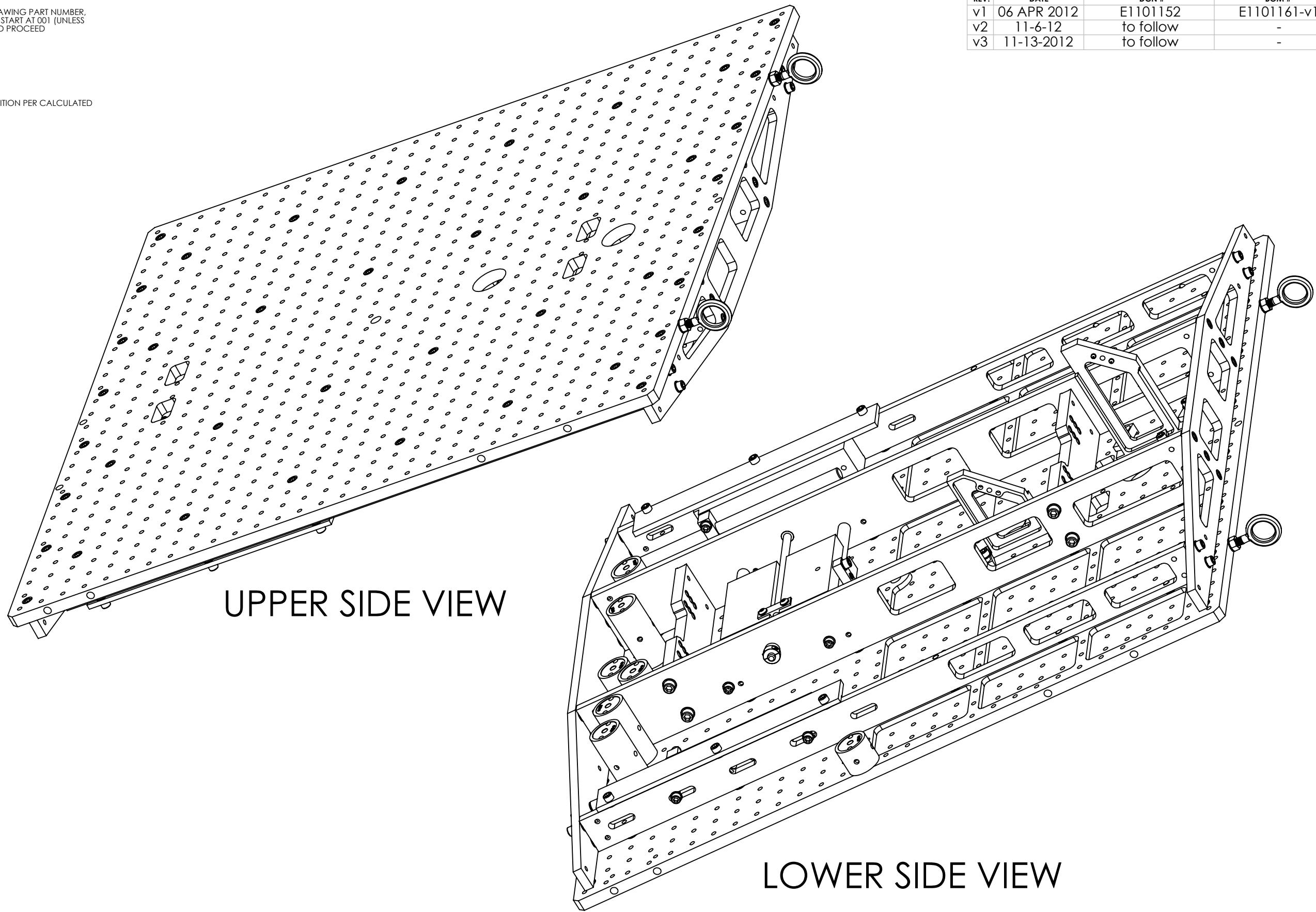


8 7 6 5 4 3 2 1

NOTES CONTINUED:
 5. BAG AND TAG PARTS SEPARATELY WITH THEIR DRAWING PART NUMBER, REVISION, AND SERIAL NUMBER. SERIAL NUMBERS START AT 001 (UNLESS OTHERWISE SPECIFIED) FOR THE FIRST ARTICLE AND PROCEED CONSECUTIVELY.
 EXAMPLE:
 DXXXXXX-vY
 S/N-001
 6. MASS: APPROX 84 LBS.
 7. CYLINDER MASSES ARE SHOWN IN SUGGESTED POSITION PER CALCULATED MASS PROPERTIES OF TELESCOPE ASSEMBLY.

REV.	DATE	DCN #	BOM #
v1	06 APR 2012	E1101152	E1101161-v1
v2	11-6-12	to follow	-
v3	11-13-2012	to follow	-



UPPER SIDE VIEW

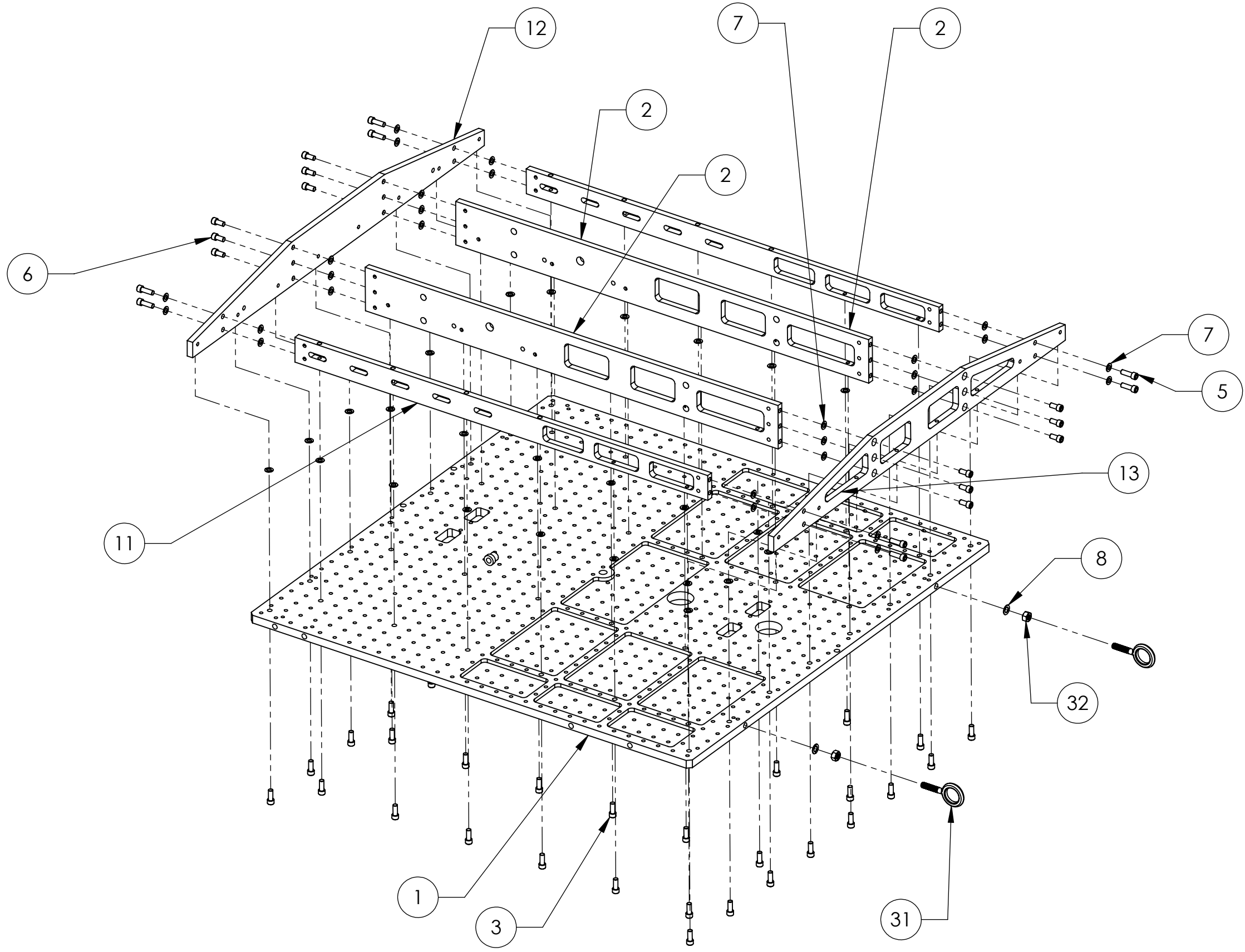
LOWER SIDE VIEW

D1102291 aLIGO TMS ISC Table Structural Assembly, PART PDM REV: X-042, DRAWING PDM REV: X-012

DIMENSIONS ARE IN INCHES				NOTES AND TOLERANCES: (UNLESS OTHERWISE SPECIFIED)				LIGO CALIFORNIA INSTITUTE OF TECHNOLOGY MASSACHUSETTS INSTITUTE OF TECHNOLOGY				PART NAME			
TOLERANCES: .XX ± .01 .XXX ± .005 ANGULAR ± 1.0°				1. INTERPRET DRAWING PER ASME Y14.5-1994. 2. REMOVE ALL SHARP EDGES, R.02 MIN. 3. DO NOT SCALE FROM DRAWING. 4. ALL MACHINING FLUIDS MUST BE FULLY SYNTHETIC, FULLY WATER SOLUBLE AND FREE OF SULFUR, SILICONE, AND CHLORINE.				aLIGO TMS ISC TABLE STRUCTURAL ASSEMBLY				DESIGNER K. MAILAND 05 DEC 2011			
MATERIAL N/A				FINISH N/A				SYSTEM ADVANCED LIGO				SUB-SYSTEM AOS			
								NEXT ASSY D1000484				DRAPER C. CONLEY 06 APR 2012			
												CHECKER SEE DCN			
												APPROVAL SEE DCN			
												SIZE DWG. NO. B D1102291			
												REV. v3			
												SCALE: NONE PROJECTION: SHEET 1 OF 7			

8 7 6 5 4 3 2 1

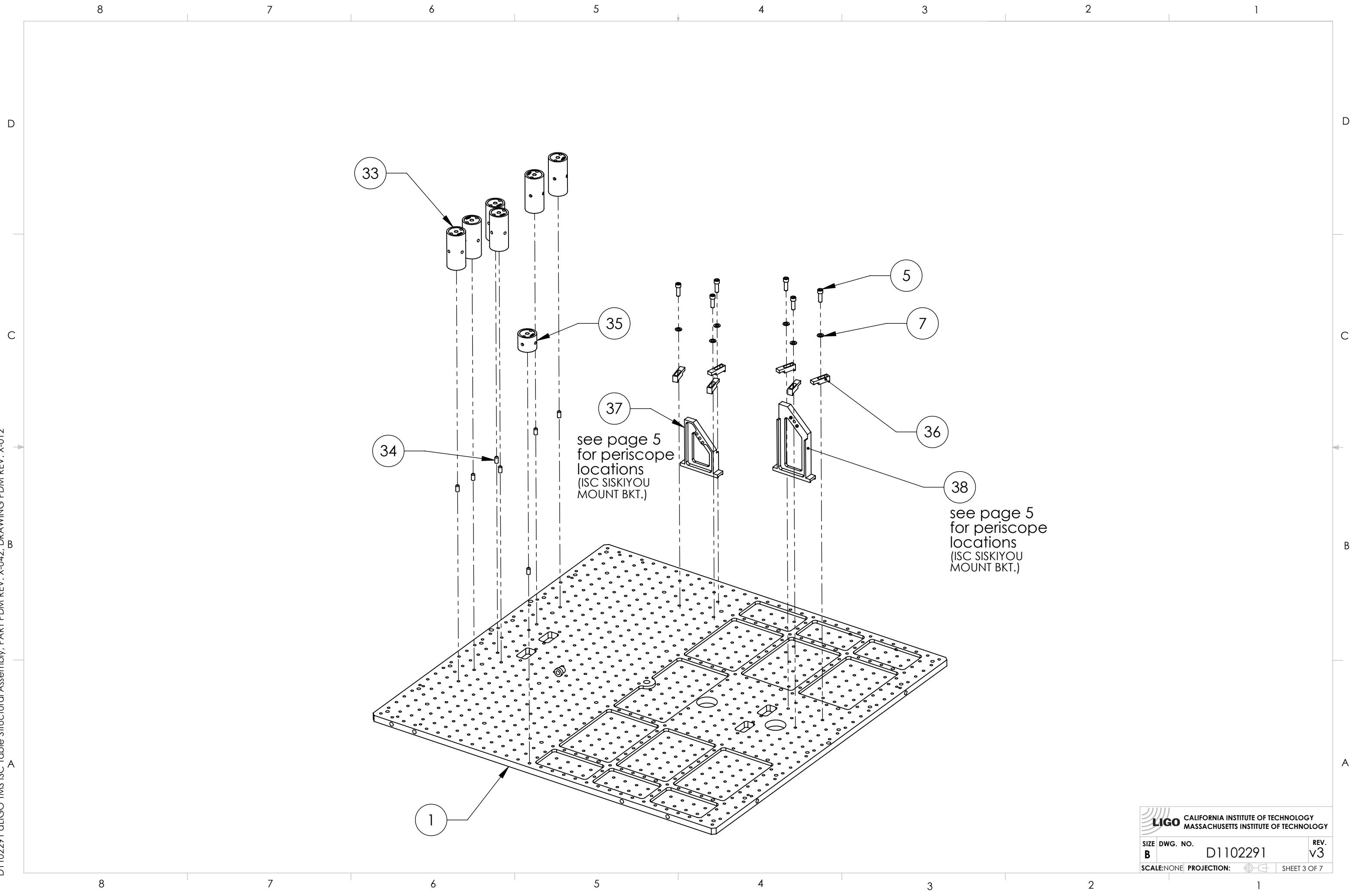
D1102291 aLIGO TMS ISC Table Structural Assembly, PART PDM REV: X-042, DRAWING PDM REV: X-012




LIGO CALIFORNIA INSTITUTE OF TECHNOLOGY
MASSACHUSETTS INSTITUTE OF TECHNOLOGY

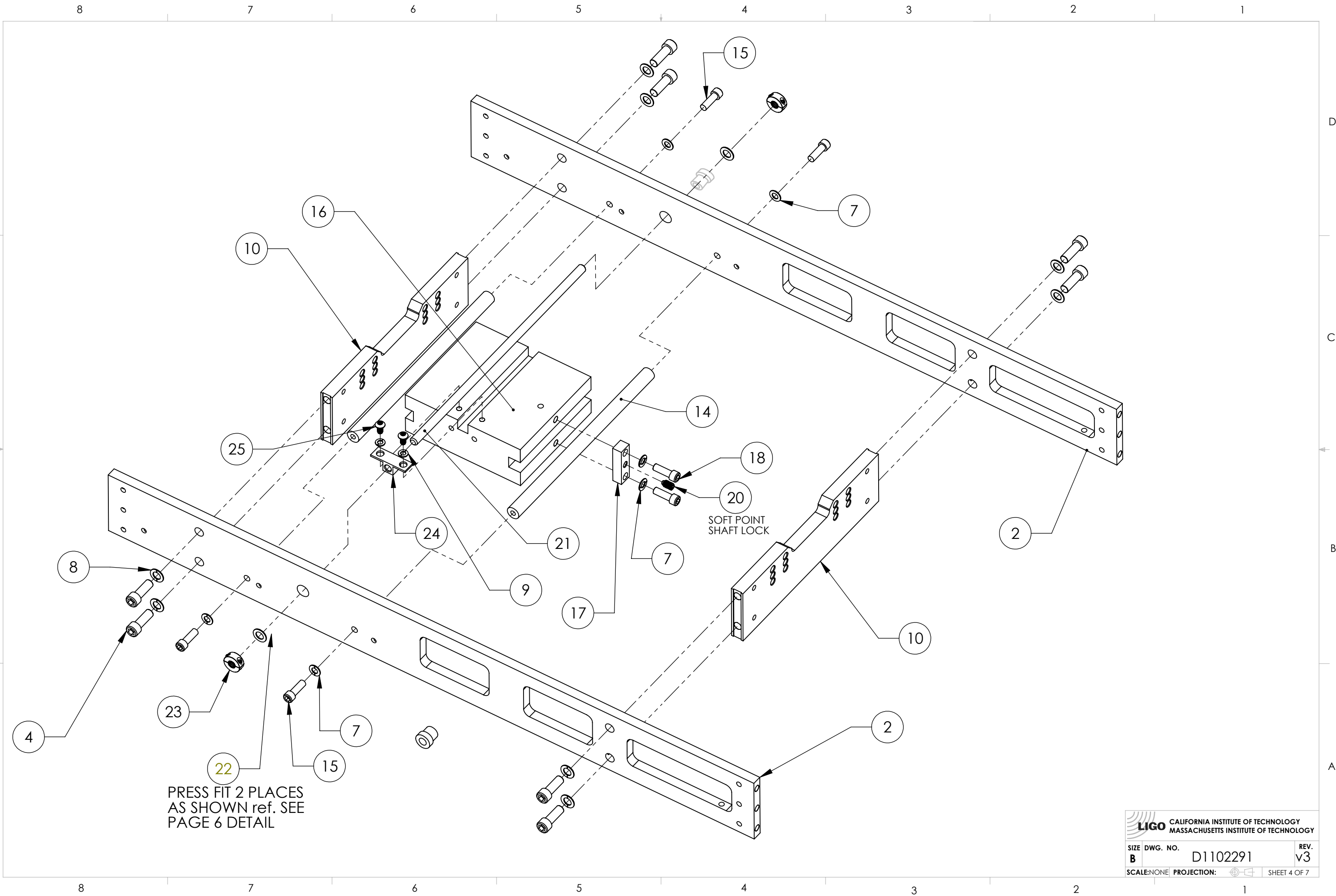
SIZE	DWG. NO.	REV.
B	D1102291	v3
SCALE: NONE PROJECTION:		SHEET 2 OF 7

D1102291 aLIGO TMS ISC Table Structural Assembly, PART PDM REV: X-042, DRAWING PDM REV: X-012



 CALIFORNIA INSTITUTE OF TECHNOLOGY MASSACHUSETTS INSTITUTE OF TECHNOLOGY		
SIZE	DWG. NO.	REV.
B	D1102291	v3
SCALE: NONE	PROJECTION:	SHEET 3 OF 7

D1102291 aLIGO TMS ISC Table Structural Assembly, PART PDM REV: X-042, DRAWING PDM REV: X-012

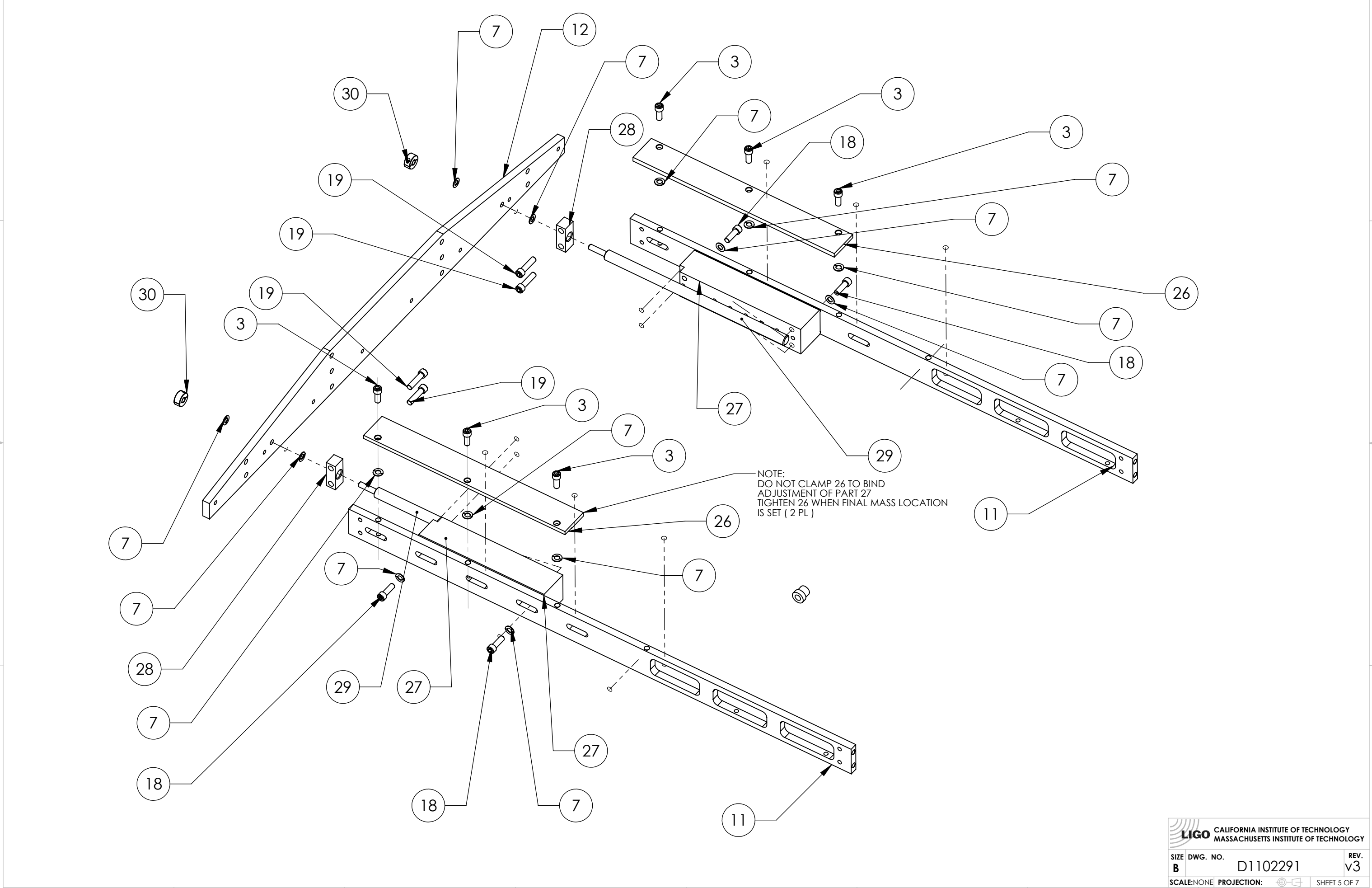




22
 PRESS FIT 2 PLACES
 AS SHOWN ref. SEE
 PAGE 6 DETAIL

20
 SOFT POINT
 SHAFT LOCK

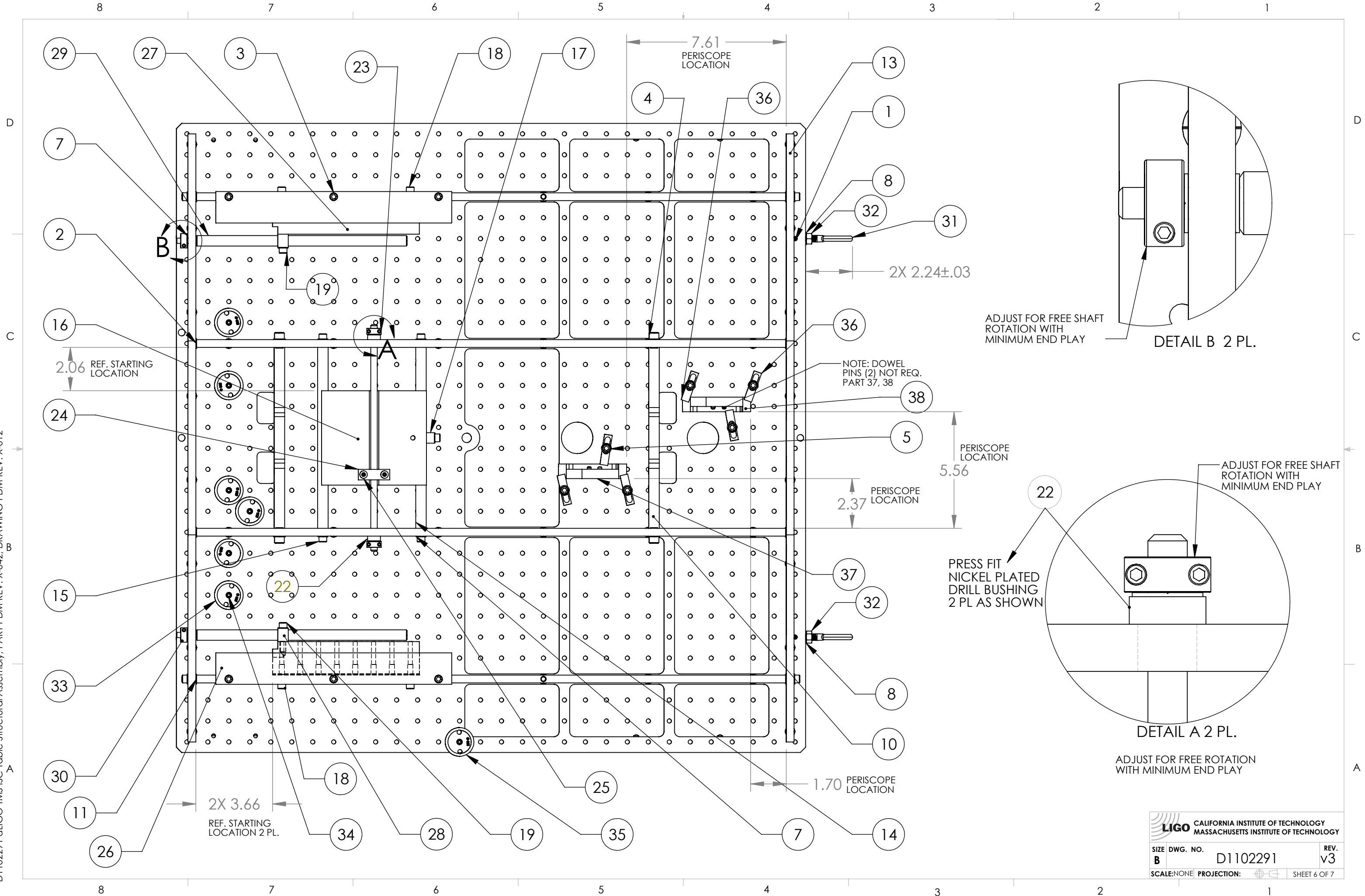
CALIFORNIA INSTITUTE OF TECHNOLOGY MASSACHUSETTS INSTITUTE OF TECHNOLOGY	
SIZE DWG. NO. B D1102291	REV. v3
SCALE: NONE PROJECTION:	SHEET 4 OF 7

D1102291 aLIGO TMS ISC Table Structural Assembly, PART PDM REV: X-042, DRAWING PDM REV: X-012



 CALIFORNIA INSTITUTE OF TECHNOLOGY MASSACHUSETTS INSTITUTE OF TECHNOLOGY		
SIZE B	DWG. NO. D1102291	REV. v3
SCALE: NONE	PROJECTION: 	SHEET 5 OF 7

D1102291 aLIGO TMS ISC Table Structural Assembly, PART PDM REV: X-042, DRAWING PDM REV: X-012



NOTES CONTINUED:


REV.	DATE	DCN #	DRAWING TREE #
v3	11-13-12	to follow	

38	D1002504 TMS, SISKIYOU MOUNT BRACKET, LOWER OUTBOARD	1
37	D1001435 TMS, SISKIYOU MOUNT BRACKET, LOWER INBOARD	1
36	D1100904_aLigo_TMS_Periscope_Mount_Clamp	6
35	D1200471 200 GM TABLE MASS	1
34	D1100358 TABLE MASS ATTACHMENT SCR	7
33	D1200470 500GM TABLE MASS	6
32	COPPER NICKEL NUT 5/16-18 (McMaster)# 20810A030	2
31	D1001161 MOD. EYE BOLT AT E.Q. ROD	2
30	One Piece Clamp 1/4 Bore s. s. 9421T300 (McM-Carr)	2
29	D1003162 PITCH MASS ADJUSTER ROD	2
28	D1002757 PITCH SLIDE GUIDE BRKT.	2
27	D1002699 PITCH MASS	2
26	D1002758 PITCH MASS GUIDE	2
25	BU-2406-NA (U-C Components)10-24-x.37 Button Socket Hd. Scr Silver Plated	2
24	D1002769 ROLL SLIDE GUIDE BRACKET	1
23	60705K46 SPLIT CLAMP (McM-Carr) 5/6-18 threaded Stainless Stl.	2
22	D1201364 - REF. #8492A167 (McM-Carr)Nickel Plated - Electroless	2
21	D1002768 THD. STOCK CUT TO LG. 1/4-20 x .37 Silver Tip Set Scr 99934A760 (McM-Carr)	1
20	1/4-20 x 1" long SHCS SILVER PLATED UC-Components # C-2016-NA	4
19	1/4-20 X .75 LONG SHCS SILVER PLATED UC-Components # C-2012-NA	6
18	D1002759 ROLL MASS LOCK	1
17	D1002698 ROLL SLIDE MASS	1
16	10-24 x .75 Silver Plated SHCS _UC-Components # C-2012-NA	4
15	D1002755 ROLL SLIDE ROD	2
14	D1001109 END PLATE BACK	1
13	D1002696 END PLATE FRONT	1
12	D1001164 SMALL GUSSET	2
11	D1200310 SPREADER BAR	2
10	#10 VENT FL WSHR _U-C Components WFV-10 Washer, Vented Flat	2
9	.312 VENT FL WSHR _U-C Components WFV-31 Washer, Vented Flat	12
8	.250 VENT FL WSHR _U-C Components WFV-25 Washer, Vented Flat	98
7	S.STL 0.25-20 UNC-2A x 0.5 LG. U-C Components C-2008-N Screw, Socket Head Cap	12
6	S.STL 0.25-20 UNC-2A x 0.75 LG. U-C Components C-2012-N Screw, Socket Head Cap	14
5	S.STL 0.31-18 UNC-2A x 0.875 LG. U-C Components C-1814-N Screw, Socket Head Cap	8
4	S.STL 0.25-20 UNC-2A x 0.625 LG. U-C Components C-2010-N Screw, Socket Head Cap	46
3	D1001163 TABLE GUSSET PLATE	2
2	D1102293 TABLE ASSEMBLY	1
ITEM NO.	PART NUMBER	QTY.

BOM Table

D1102291 aLIGO TMS ISC Table Structural Assembly, PART PDM REV.: DRAWING PDM REV: X-012

NOTES AND TOLERANCES: (UNLESS OTHERWISE SPECIFIED)	
DIMENSIONS ARE IN INCHES	1. INTERPRET DRAWING PER ASME Y14.5-1994.
TOLERANCES: .XX ± .01 .XXX ± .005	2. REMOVE ALL SHARP EDGES, R.02 MIN.
ANGULAR ± 1.0°	3. DO NOT SCALE FROM DRAWING.
	4. ALL MACHINING FLUIDS MUST BE FULLY SYNTHETIC, FULLY WATER SOLUBLE AND FREE OF SULFUR, SILICONE, AND CHLORINE.
MATERIAL	FINISH
	μinch

 CALIFORNIA INSTITUTE OF TECHNOLOGY MASSACHUSETTS INSTITUTE OF TECHNOLOGY		PART NAME		BOM	
DESIGNER	C. CONLEY	06 APR 2012	SIZE DWG. NO.	B D1102291	
DRAFTER	k mailand		REV.	v3	
CHECKER	SEE DCN		SCALE: 1:4	PROJECTION:	SHEET 7 OF 7