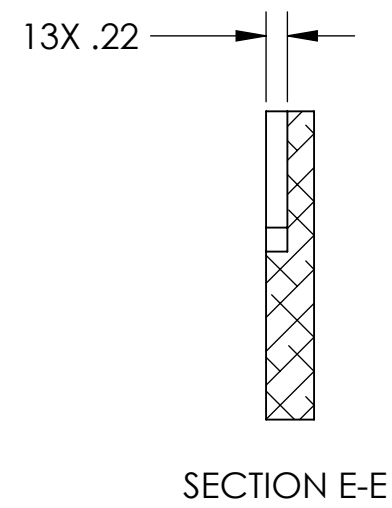
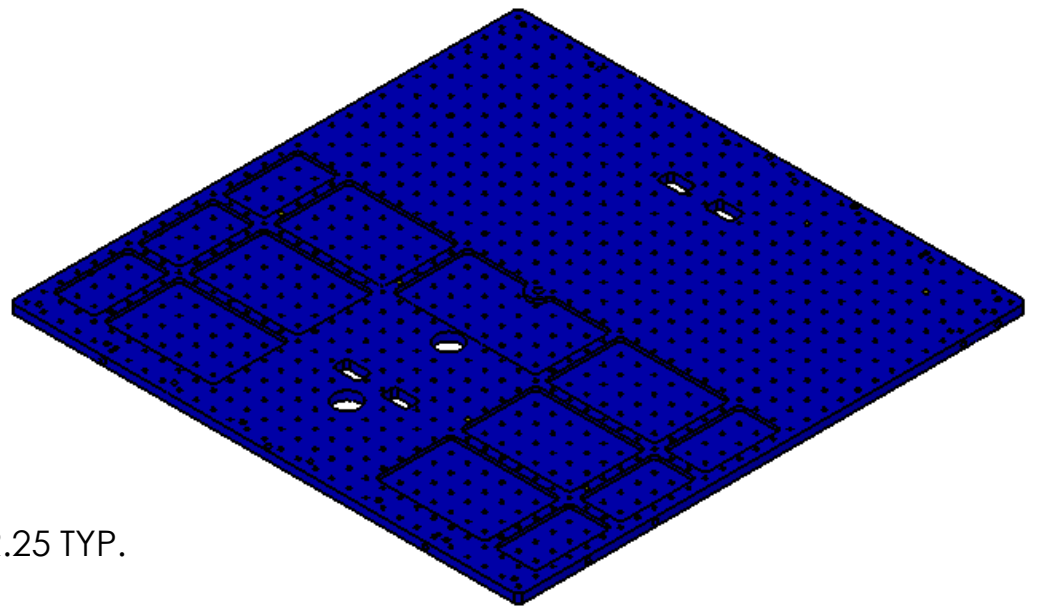
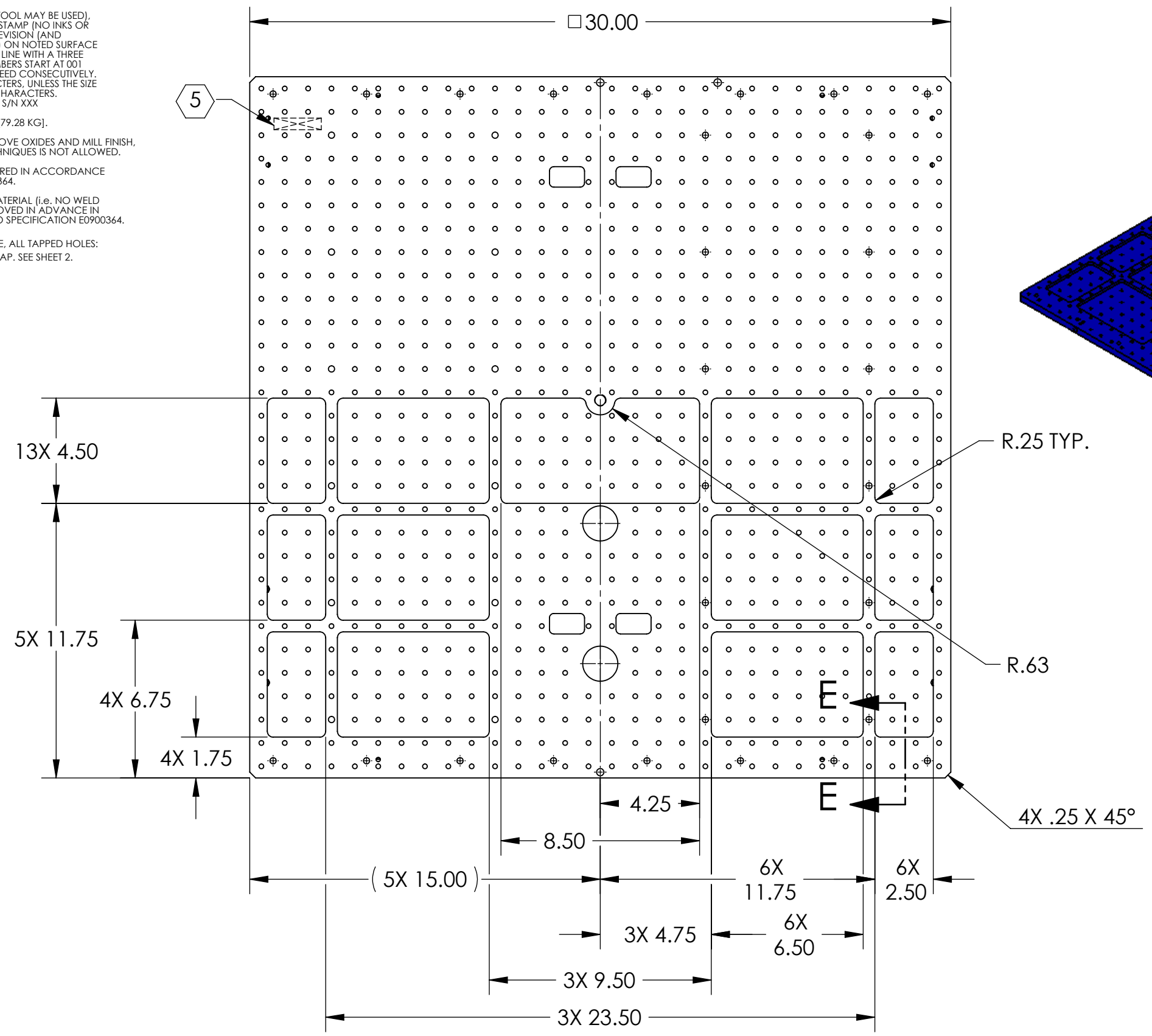


D1102293 aLIGO TMS Telescope Breadboard, PART PDM REV: X-007, DRAWING PDM REV: X-005

- NOTES CONTINUED:**
- 5 SCRIBE, ENGRAVE (A VIBRATORY TOOL MAY BE USED), LASER MARK OR MECHANICALLY STAMP (NO INKS OR DYES) DRAWING PART NUMBER, REVISION (AND VARIANT OR "TYPE" IF APPLICABLE) ON NOTED SURFACE OF PART FOLLOWED ON THE NEXT LINE WITH A THREE DIGIT SERIAL NUMBER. SERIAL NUMBERS START AT 001 FOR THE FIRST ARTICLE AND PROCEED CONSECUTIVELY. USE MINIMUM 0.12" HIGH CHARACTERS, UNLESS THE SIZE OF THE PART DICTATES SMALLER CHARACTERS. EXAMPLE: DXXXXXX-VY, TYPE-XX, S/N XXX
 - 6. APPROXIMATE WEIGHT = 36.0 LB [79.28 KG].
 - 7. MACHINE ALL SURFACES TO REMOVE OXIDES AND MILL FINISH. USE OF ABRASIVE REMOVAL TECHNIQUES IS NOT ALLOWED.
 - 8. ALL PARTS SHALL BE MANUFACTURED IN ACCORDANCE WITH LIGO SPECIFICATION E0900364.
 - 9. ALL MATERIAL IS TO BE VIRGIN MATERIAL (i.e. NO WELD REPAIRS OR PLUGS UNLESS APPROVED IN ADVANCE IN WRITING BY LIGO). REFER TO LIGO SPECIFICATION E0900364.
 - 10 EXCEPT WHERE NOTED OTHERWISE, ALL TAPPED HOLES: .005" OVERSIZE BOTH DRILL AND TAP. SEE SHEET 2.

REV.	DATE	DCN #	DRAWING TREE #
v1	05 DEC 2011	E1101152	-
			-
			-



NOTES AND TOLERANCES: (UNLESS OTHERWISE SPECIFIED)	
DIMENSIONS ARE IN INCHES	
TOLERANCES: .XX ± .01 .XXX ± .005	
ANGULAR ± 1.0°	
1. INTERPRET DRAWING PER ASME Y14.5-1994. 2. REMOVE ALL SHARP EDGES, R.02 MIN. 3. DO NOT SCALE FROM DRAWING. 4. ALL MACHINING FLUIDS MUST BE FULLY SYNTHETIC, FULLY WATER SOLUBLE AND FREE OF SULFUR, SILICONE, AND CHLORINE.	
MATERIAL	FINISH
6061-T6 Al	63 μinch Ra

CALIFORNIA INSTITUTE OF TECHNOLOGY MASSACHUSETTS INSTITUTE OF TECHNOLOGY		PART NAME	
ADVANCED LIGO		aLIGO TMS TELESCOPE BREADBOARD	
DESIGNER	K. MAILAND	DATE	05 DEC 2011
DRAFTER		SIZE	DWG. NO.
CHECKER		B	D1102293
APPROVAL		SCALE	NONE
		PROJECTION	
			SHEET 1 OF 3

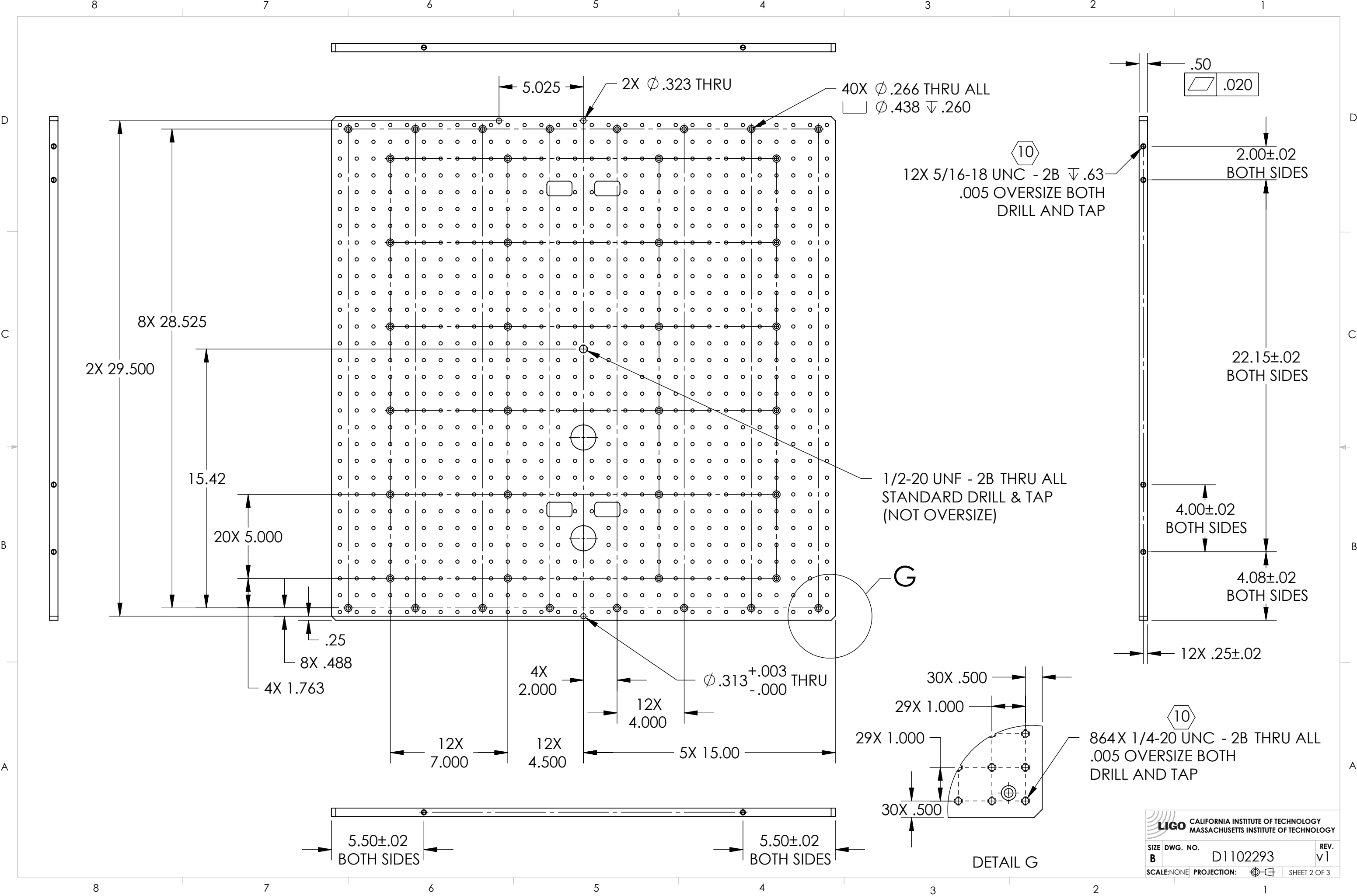
8 7 6 5 4 3 2 1

D C B A

D C B A

8 7 6 5 4 3 2 1

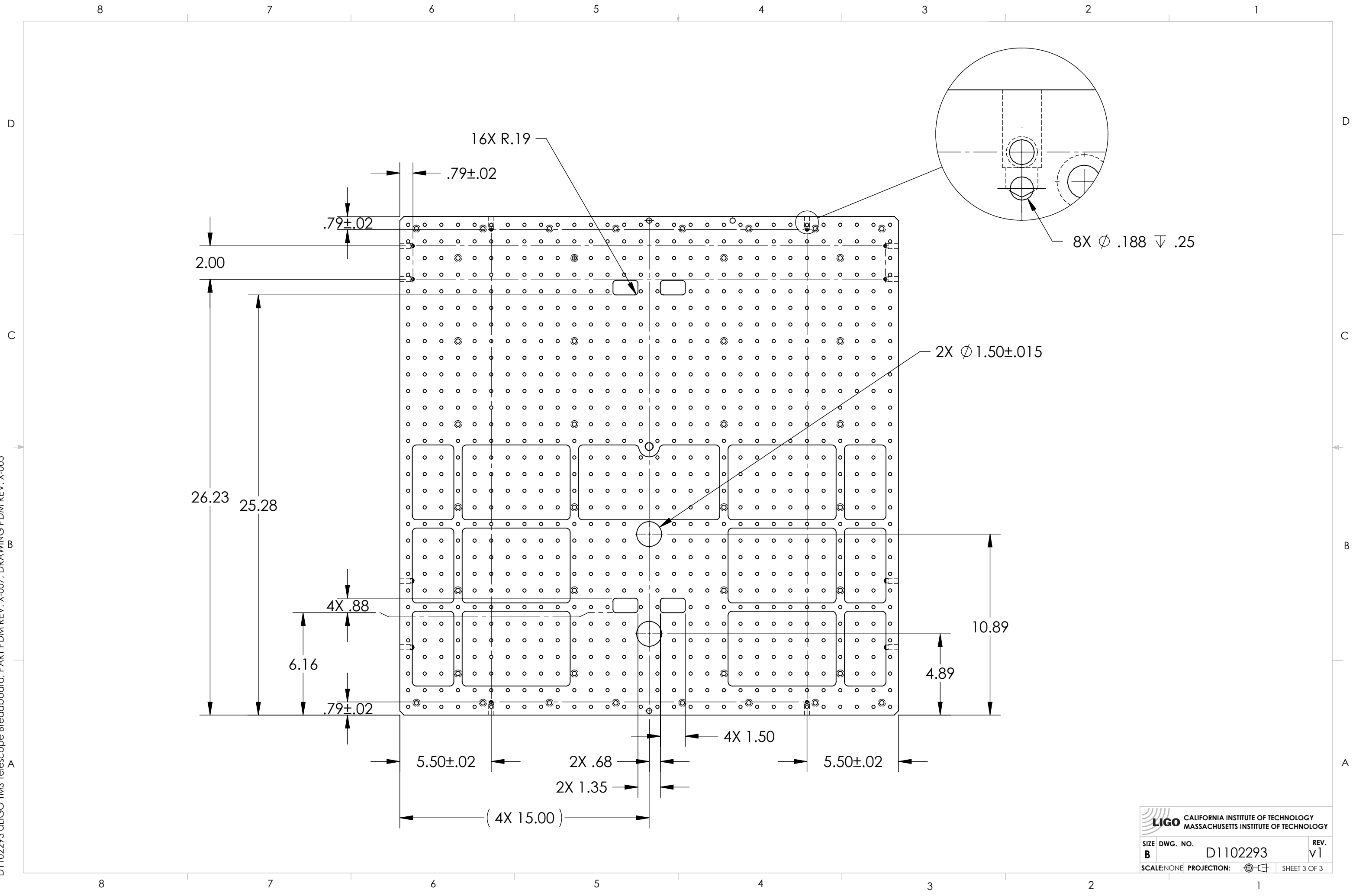
D1102293 dLIGO TMS Telescope Breadboard, PART PDM REV: X-007, DRAWING PDM REV: X-005



LIGO CALIFORNIA INSTITUTE OF TECHNOLOGY
 MASSACHUSETTS INSTITUTE OF TECHNOLOGY

SIZE DWG. NO. B	D1102293	REV. v1
SCALE: NONE	PROJECTION:	SHEET 2 OF 3

D1102293 aLIGO TMS Telescope Breadboard, PART PDM REV: X-007, DRAWING PDM REV: X-005



LIGO CALIFORNIA INSTITUTE OF TECHNOLOGY
 MASSACHUSETTS INSTITUTE OF TECHNOLOGY

SIZE	DWG. NO.	REV.
B	D1102293	v1
SCALE: NONE		PROJECTION:
		SHEET 3 OF 3