

8 7 6 5 4 3 2 1

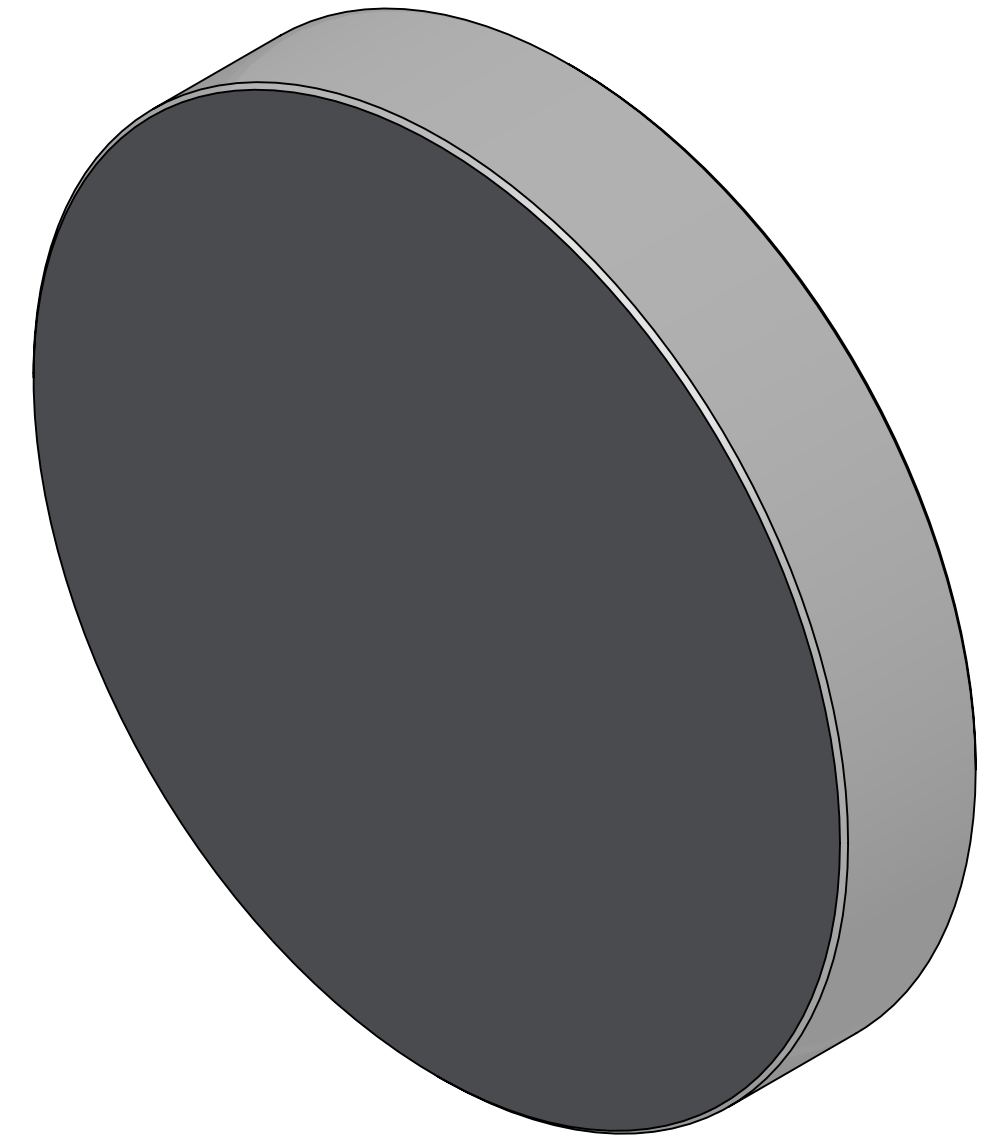
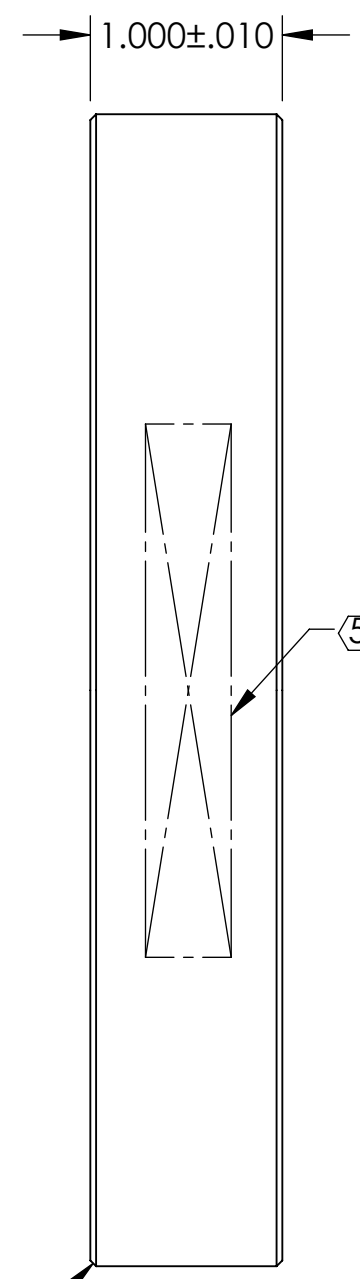
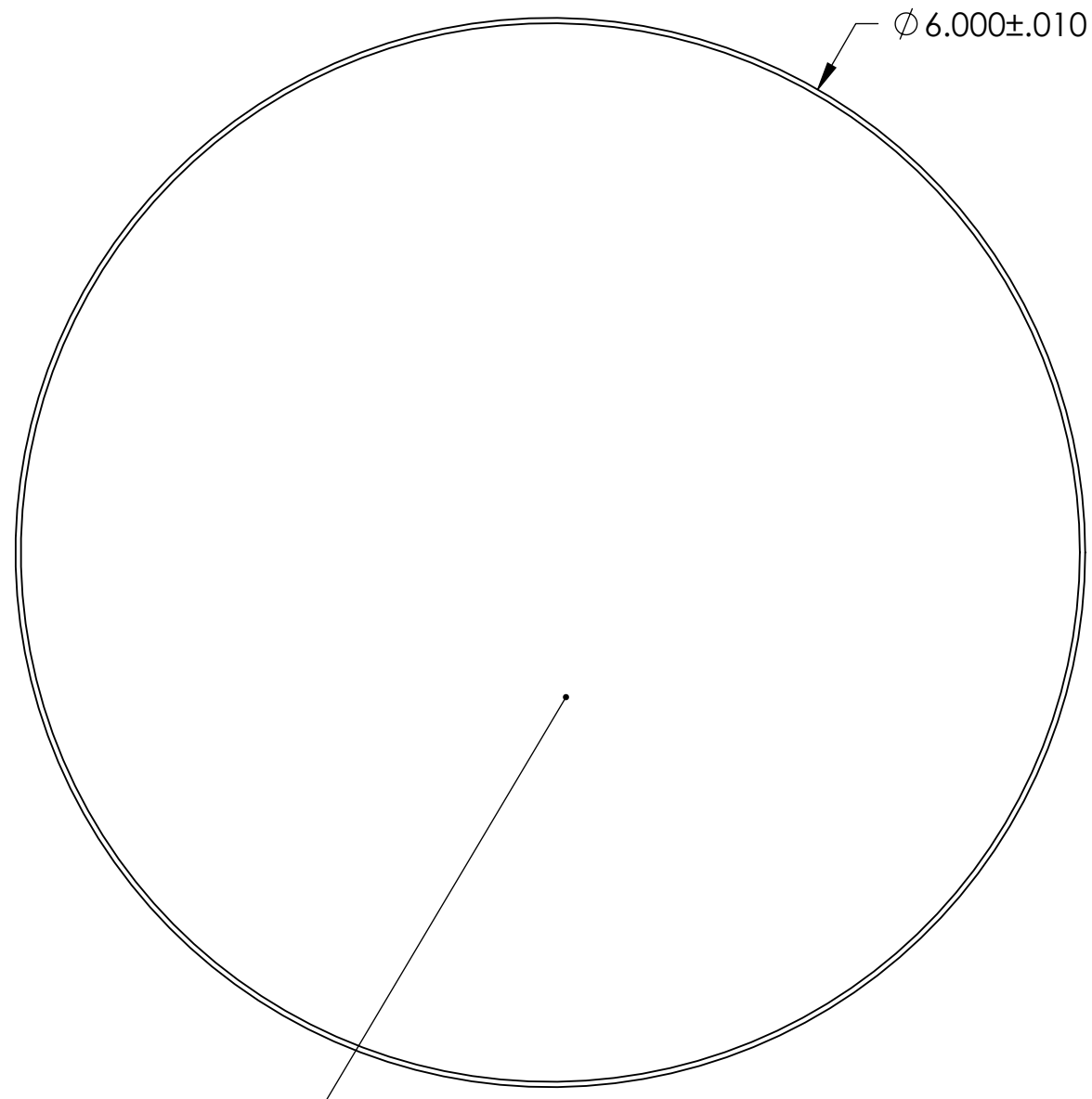
REV.	DATE	DCN #	DRAWING TREE #
v1	28 MAR 2012	E1101192	-
-	-	-	-
-	-	-	-

**NOTES (UNLESS OTHERWISE SPECIFIED) CONTINUED:**

- ⑤ ETCH, GRIND, LASER MARK, OR SANDBLAST (NO INKS OR DYES) DRAWING PART NUMBER, REVISION (AND VARIANT OR "TYPE" IF APPLICABLE) ON NOTED SURFACE OF PART FOLLOWED ON THE NEXT LINE WITH A THREE DIGIT SERIAL NUMBER. SERIAL NUMBERS START AT 001 FOR THE FIRST ARTICLE AND PROCEED CONSECUTIVELY. USE MINIMUM 0.12" HIGH CHARACTERS, UNLESS THE SIZE OF THE PART DICTATES SMALLER CHARACTERS.  
EXAMPLE: DXXXXXXXX-VY, TYPE-XX, S/N XXX
- 6. MASS: 1.161 KG [2.560 LB].
- ⑦ STANDARD GROUND SURFACE QUALITY ON NON-COATED FACES.
- ⑧ MIRROR FACE:  
PROTECTED SILVER COATING PER LIGO-E1200321  
SURFACE ACCURACY: 1/10 WAVE @ 532 NM  
SURFACE QUALITY: 60-40

D  
C  
B  
A

D  
C  
B  
A



D1102335 aLIGO TMS Telescope First Fold Mirror, PART PDM REV: X-004, DRAWING PDM REV: X-007

NOTES AND TOLERANCES: (UNLESS OTHERWISE SPECIFIED)	
DIMENSIONS ARE IN INCHES	
TOLERANCES: .XX ± .01 .XXX ± .005	
ANGULAR ± 1.0°	
1. INTERPRET DRAWING PER ASME Y14.5-1994. 2. REMOVE ALL SHARP EDGES, .005-.015, FOR MACHINED PARTS. ROUND ALL EDGES APPROXIMATELY R.02 FOR SHEET METAL PARTS. 3. DO NOT SCALE FROM DRAWING. 4. ALL MACHINING FLUIDS MUST BE FULLY SYNTHETIC, FULLY WATER SOLUBLE AND FREE OF SULFUR, SILICONE, AND CHLORINE.	
MATERIAL	FINISH
BK7	⑦

CALIFORNIA INSTITUTE OF TECHNOLOGY MASSACHUSETTS INSTITUTE OF TECHNOLOGY		PART NAME		aLIGO TMS TELESCOPE FIRST FOLD MIRROR	
SYSTEM	SUB-SYSTEM	DESIGNER	DATE	SIZE	DWG. NO.
ADVANCED LIGO	AOS	K. MAILAND	09 JAN 2012	B	D1102335
CHECKER	APPROVAL	SEE DCN	28 MAR 2012	SCALE: NONE	PROJECTION:
SEE DCN	SEE DCN				
NEXT ASSY					SHEET 1 OF 1
D1200244					
		REV.		v1	

8 7 6 5 4 3 2 1