

8

7

6

5

4

3

2

1

NOTES CONTINUED:

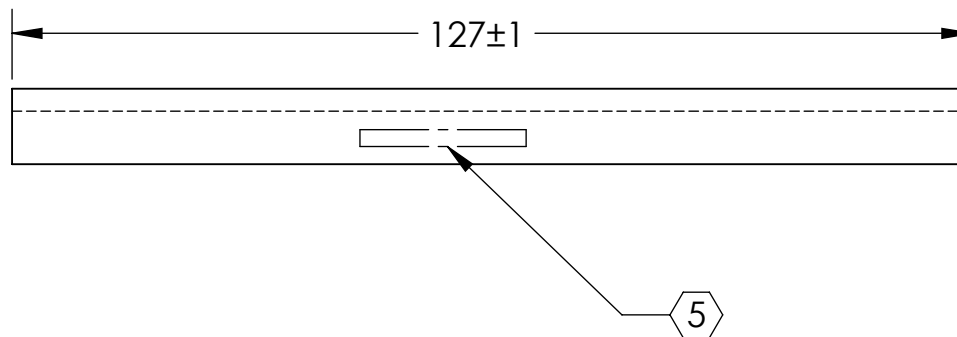
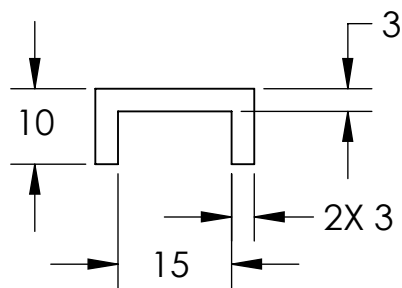
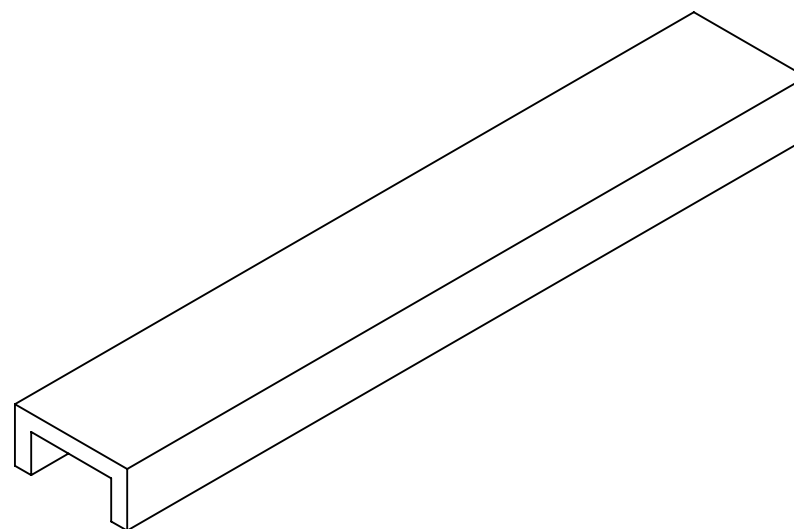
5. SCRIBE, ENGRAVE (A VIBRATORY TOOL MAY BE USED), LASER MARK OR MECHANICALLY STAMP (NO INKS OR DYES) DRAWING PART NUMBER, REVISION (AND VARIANT OR "TYPE" IF APPLICABLE) ON NOTED SURFACE OF PART FOLLOWED ON THE NEXT LINE WITH A THREE DIGIT SERIAL NUMBER. SERIAL NUMBERS START AT 001 FOR THE FIRST ARTICLE AND PROCEED CONSECUTIVELY. USE MINIMUM 0.12" HIGH CHARACTERS, UNLESS THE SIZE OF THE PART DICTATES SMALLER CHARACTERS. EXAMPLE: DXXXXXX-VY, TYPE-XX, S/N XXX

6. APPROXIMATE WEIGHT = 0.04 LB.

7. ALL PARTS SHALL BE MANUFACTURED IN ACCORDANCE WITH LIGO SPECIFICATION E0900364.

8. ALL MATERIAL IS TO BE VIRGIN MATERIAL (i.e. NO WELD REPAIRS, PLUGS OR RECYCLED MATERIAL). NO REPAIRS SHALL BE MADE UNLESS APPROVED IN ADVANCE, AND IN WRITING, BY LIGO LABORATORY. REFER TO LIGO-E0900364.

| REV. | DATE        | DCN # | DRAWING TREE # |
|------|-------------|-------|----------------|
| V1   | 17 JAN 2012 | -     | -              |
| -    | -           | -     | -              |
| -    | -           | -     | -              |



D1200099 QLIGO, SUS, EQ STOP RAIL, PART PDM REV.: , DRAWING PDM REV.:

B

A

B

A

NOTES AND TOLERANCES: (UNLESS OTHERWISE SPECIFIED)

DIMENSIONS ARE IN MILLIMETERS

TOLERANCES:  
 .XX ± .25  
 .XXX ± .13

ANGULAR ± .5°

1. INTERPRET DRAWING PER ASME Y14.5-1994.
2. REMOVE ALL SHARP EDGES, .005-.015, FOR MACHINED PARTS. ROUND ALL EDGES APPROXIMATELY R.02 FOR SHEET METAL PARTS.
3. DO NOT SCALE FROM DRAWING.
4. ALL MACHINING FLUIDS MUST BE FULLY SYNTHETIC, FULLY WATER SOLUBLE AND FREE OF SULFUR, SILICONE, AND CHLORINE.

MATERIAL PFA440 FINISH 63 μinch



SYSTEM ADVANCED LIGO SUB-SYSTEM SUS

NEXT ASSY

PART NAME

EQ STOP RAIL

DESIGNER B. BLAND 18 JAN 2012  
 DRAFTER K. BUCKLAND 17 JAN 2011  
 CHECKER  
 APPROVAL

SIZE DWG. NO. B D1200099 REV. v1

SCALE: 1:1 PROJECTION: SHEET 1 OF 1

8

7

6

5

4

3

2

1