

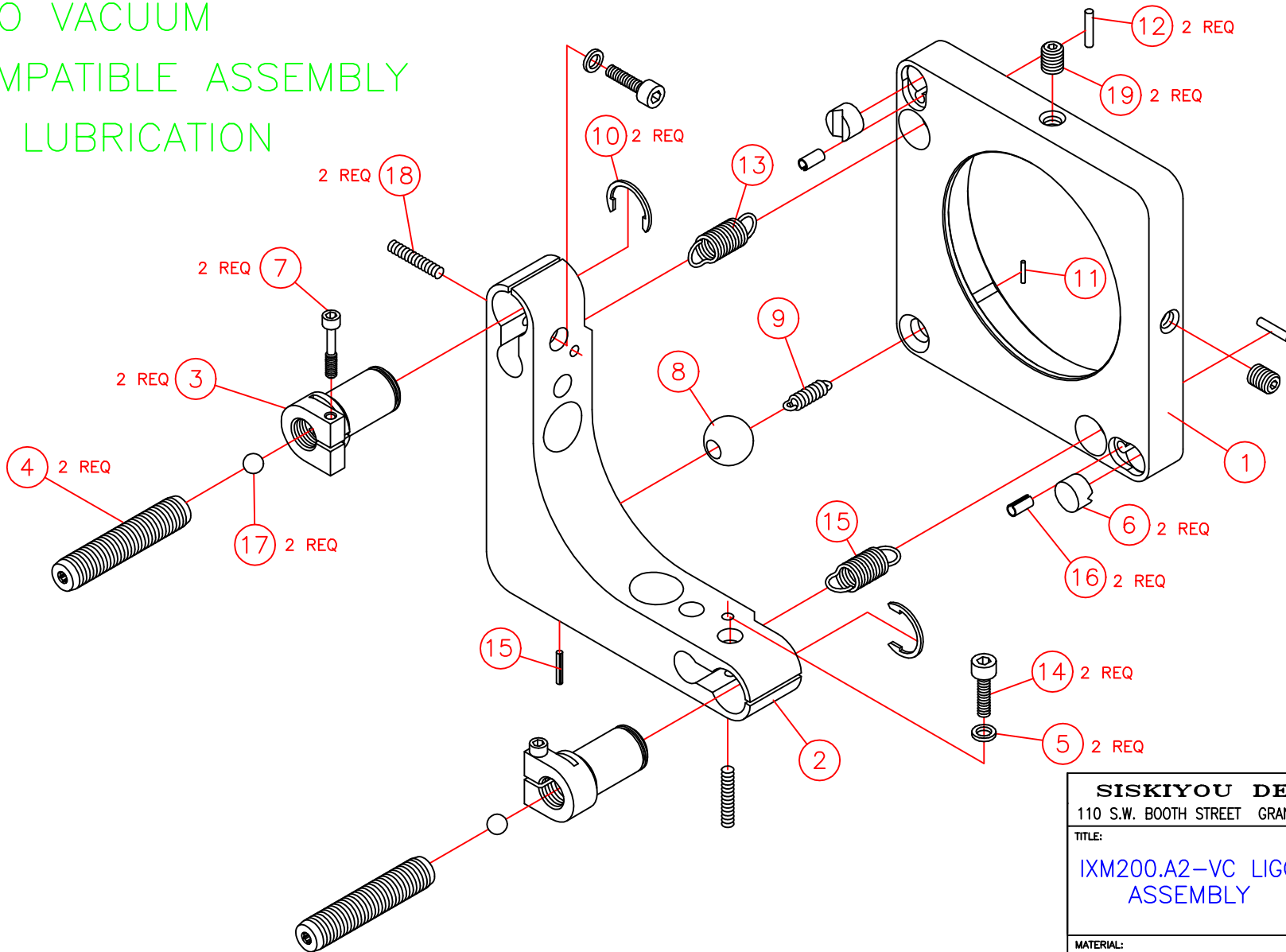
LIGO VACUUM COMPATIBLE ASSEMBLY  
NO LUBRICATION

19	2	8-32 x 3/16 SOC. SET SCREW S.S.	SS832X316
18	2	4-40 x 7/16 SOC. SET SCREW S.S.	SS440X716
17	2	Ø5/32 STAINLESS STEEL BALL	SS-532BB
16	2	Ø3/32 x 3/16 ROLL PIN S.S.	RP332X316S
15	1	Ø1/16 x 7/16 ROLL PIN S.S.	RP116X716S
14	2	M2.5 x 10 SOC. HD. CAP SCREW S.S.	M2.5X10SC
13	2	EXTENSION SPRING, MUSIC WIRE	E0180-026-0500M
12	2	Ø1/16 x 5/16 DOWEL PIN S.S.	DP116X516S
11	1	Ø1/32 x 3/16 DOWEL PIN S.S.	DP132X316S
10	2	EXT. RETAINING RING, WALDES TRUARC S.S.	5103-37H
9	1	IM200.A2 EXTENSION SPRING	6813-07V1
8	1	IM200.A2 3/8 BALL MODIFICATION	6813-0400
7	2	P100-A 2-56 CLAMP SCREW	6766-04V1
6	2	CARBIDE V-PAD	6721-05V1
5	2	RTC-0.3 WASHER	0937-02V1
4	2	0067-0007 ADJUST SCREW 1/4-100	0066-0007-2
3	2	IXM200.C2-VC CLAMPING NUT ALUM/BRONZE	0017-0010-5
2	1	IXM200.C2-VC BACK	0017-0010-2
1	1	IXM200.A2-VC LIGO FRONT FACE	0004-0012-1
ITEM	QTY	DESCRIPTION	ID./DWG.NO.

PARTS LIST

UNLESS OTHERWISE SPECIFIED		<b>SISKIYOU DESIGN, INC.</b>	
DIMENSIONS ARE IN INCHES WITH TOLERANCES OF XX ± .010 XXX ± .003 XXXX ± .0005 ANGLES ± 2° √ 32 OR BETTER		110 S.W. BOOTH STREET GRANTS PASS, OREGON 97526	
SCALE: FULL		TITLE: <b>IXM200.A2-VC LIGO ASSEMBLY</b>	DRAWN BY: JW/DF
		MATERIAL:	APPROVED BY:
			DATE: 4-26-2012
			REVISION:
			DRAWING NO: SHEET 1 OF 2
			0004-0012

LIGO VACUUM  
 COMPATIBLE ASSEMBLY  
 NO LUBRICATION



<b>SISKIYOU DESIGN, INC.</b>	
110 S.W. BOOTH STREET GRANTS PASS, OREGON 97526	
TITLE:	DRAWN BY: JW/DF
IXM200.A2-VC LIGO ASSEMBLY	APPROVED BY:
	DATE: 4-26-2012
	REVISION:
MATERIAL:	DRAWING NO: SHEET 2 OF 2
	0004-0012