

8

7

6

5

4

3

2

1

NOTES (CONTINUED):

5) SCRIBE, ENGRAVE (A VIBRATORY TOOL MAY BE USED), LASER MARK OR MECHANICALLY STAMP (NO INKS OR DYES) DRAWING PART NUMBER, REVISION (AND VARIANT OR "TYPE" IF APPLICABLE) ON NOTED SURFACE OF PART FOLLOWED ON THE NEXT LINE WITH A THREE DIGIT SERIAL NUMBER. SERIAL NUMBERS START AT 001 FOR THE FIRST ARTICLE AND PROCEED CONSECUTIVELY. USE MINIMUM 0.12" HIGH CHARACTERS, UNLESS THE SIZE OF THE PART DICTATES SMALLER CHARACTERS. EXAMPLE: DXXXXXX-VY, TYPE-XX, S/N XXX

6. MASS: 8.316 KG [18.335 LB].

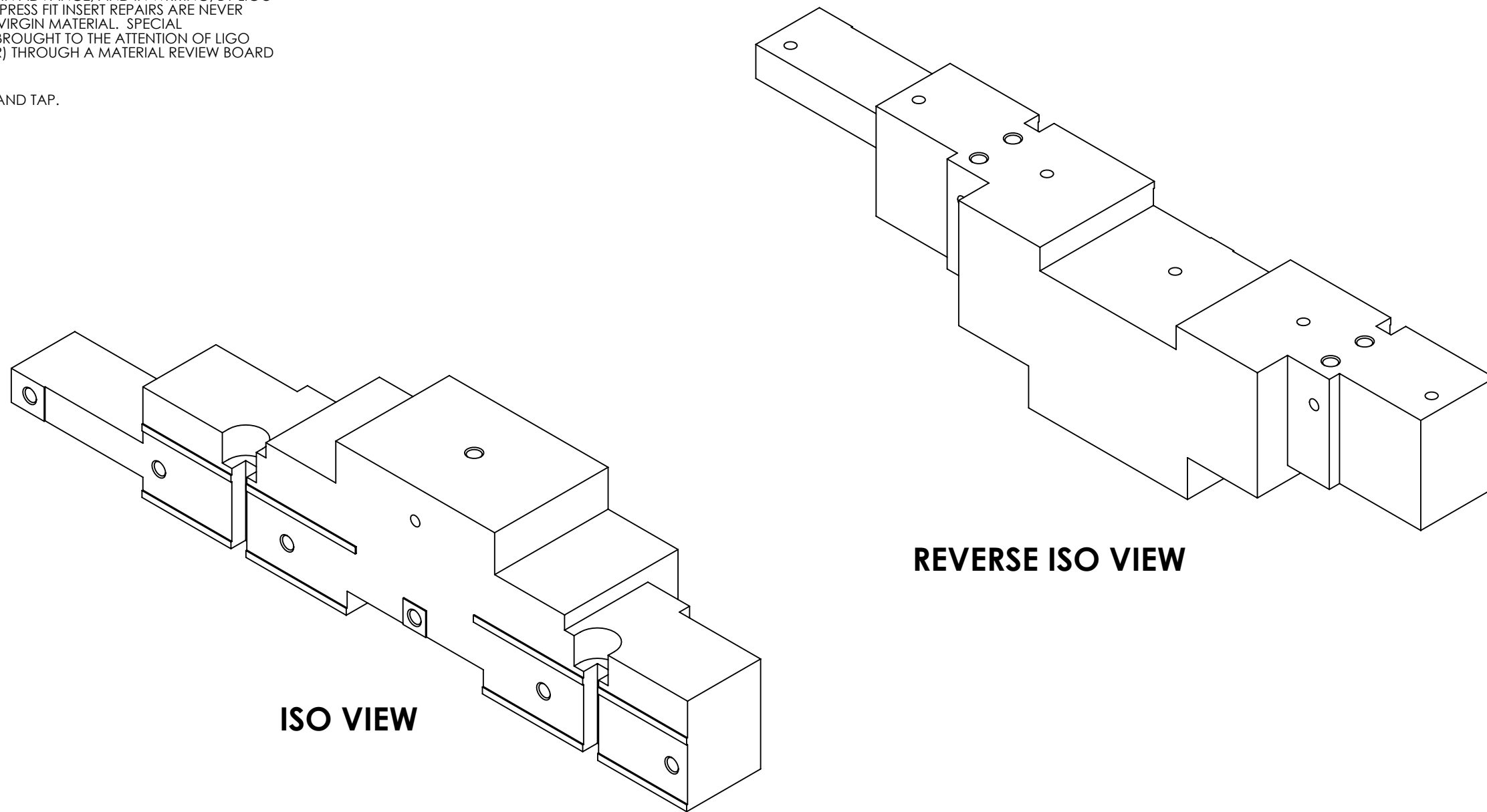
7. MACHINE ALL SURFACES TO REMOVE OXIDES AND MILL FINISH, USE OF ABRASIVE REMOVAL TECHNIQUES IS NOT ALLOWED.

8. ALL PARTS SHALL BE MANUFACTURED IN ACCORDANCE WITH LIGO SPECIFICATION E0900364.

9. NO REPAIRS SHALL BE MADE UNLESS APPROVED IN ADVANCE, AND IN WRITING, BY LIGO LABORATORY. IN GENERAL, WELD REPAIRS AND PRESS FIT INSERT REPAIRS ARE NEVER ACCEPTABLE; THE PART SHOULD BE MADE WITH VIRGIN MATERIAL. SPECIAL CIRCUMSTANCES CAN BE REVIEWED IF / WHEN BROUGHT TO THE ATTENTION OF LIGO CONTRACTING OFFICER'S REPRESENTATIVE (COTR) THROUGH A MATERIAL REVIEW BOARD (MRB) PROCESS, REFER TO LIGO-E0900364.

10) ALL TAPPED HOLES: 0.005 OVERSIZE BOTH DRILL AND TAP.

REV.	DATE	DCN #	DRAWING TREE #
v1	26 MAR 2012	E1101214	
v2	11 APR 2012	E1101214	



D1200312 aLIGO TMS Top Add Mass Bar, PART PDM REV: X-043, DRAWING PDM REV: X-004

ISO VIEW

REVERSE ISO VIEW

NOTES AND TOLERANCES: (UNLESS OTHERWISE SPECIFIED)				LIGO CALIFORNIA INSTITUTE OF TECHNOLOGY MASSACHUSETTS INSTITUTE OF TECHNOLOGY		PART NAME	
DIMENSIONS ARE IN INCHES				ADVANCED LIGO		aLIGO TMS TOP ADD MASS BAR	
TOLERANCES: .XX ± .01 .XXX ± .005				SUB-SYSTEM AOS		DESIGNER K. MAILAND	21 FEB 2012
ANGULAR ± 0.1°				NEXT ASSY D1200525		DRAFTER C. CONLEY	26 MAR 2012
MATERIAL 304 SSSL				FINISH 63 μinch Ra		CHECKER SEE DCN	SIZE DWG. NO. B D1200312
						APPROVAL SEE DCN	REV. v2
						SCALE: NONE	PROJECTION:
						SHEET 1 OF 4	

8

7

6

5

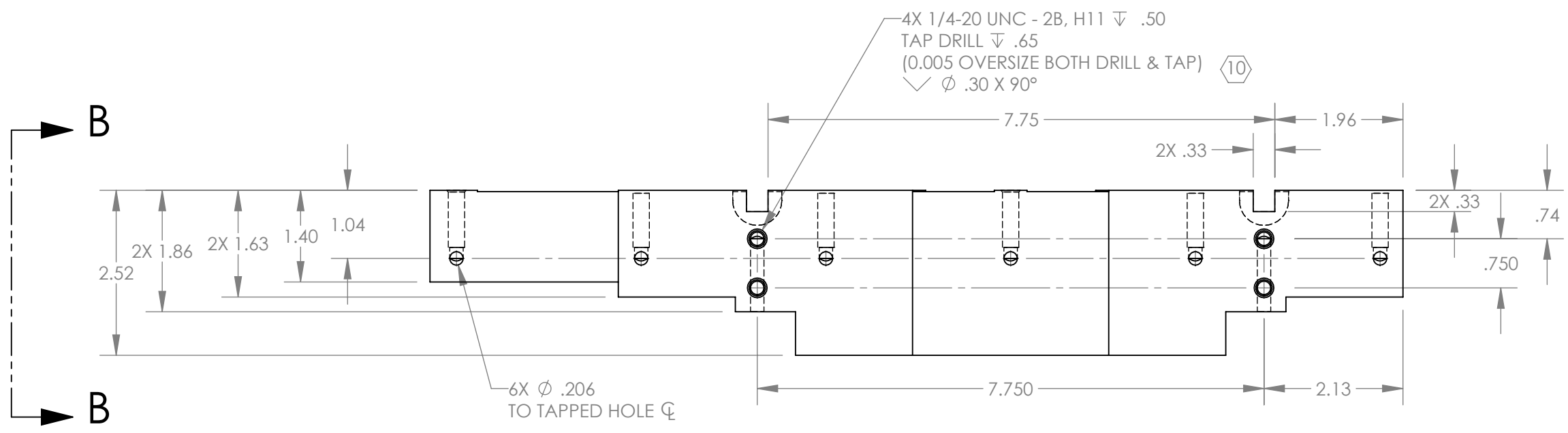
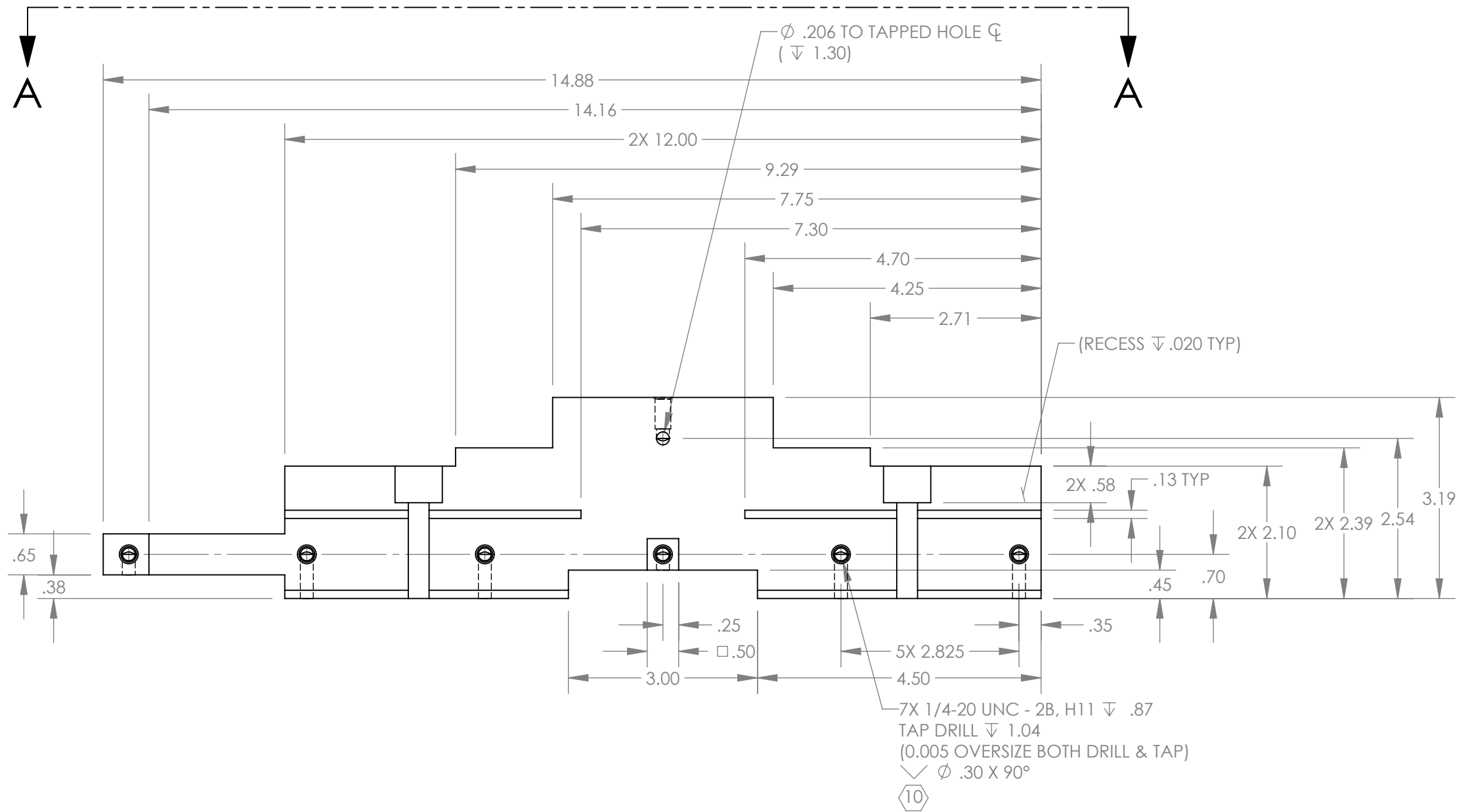
4

3

2

1

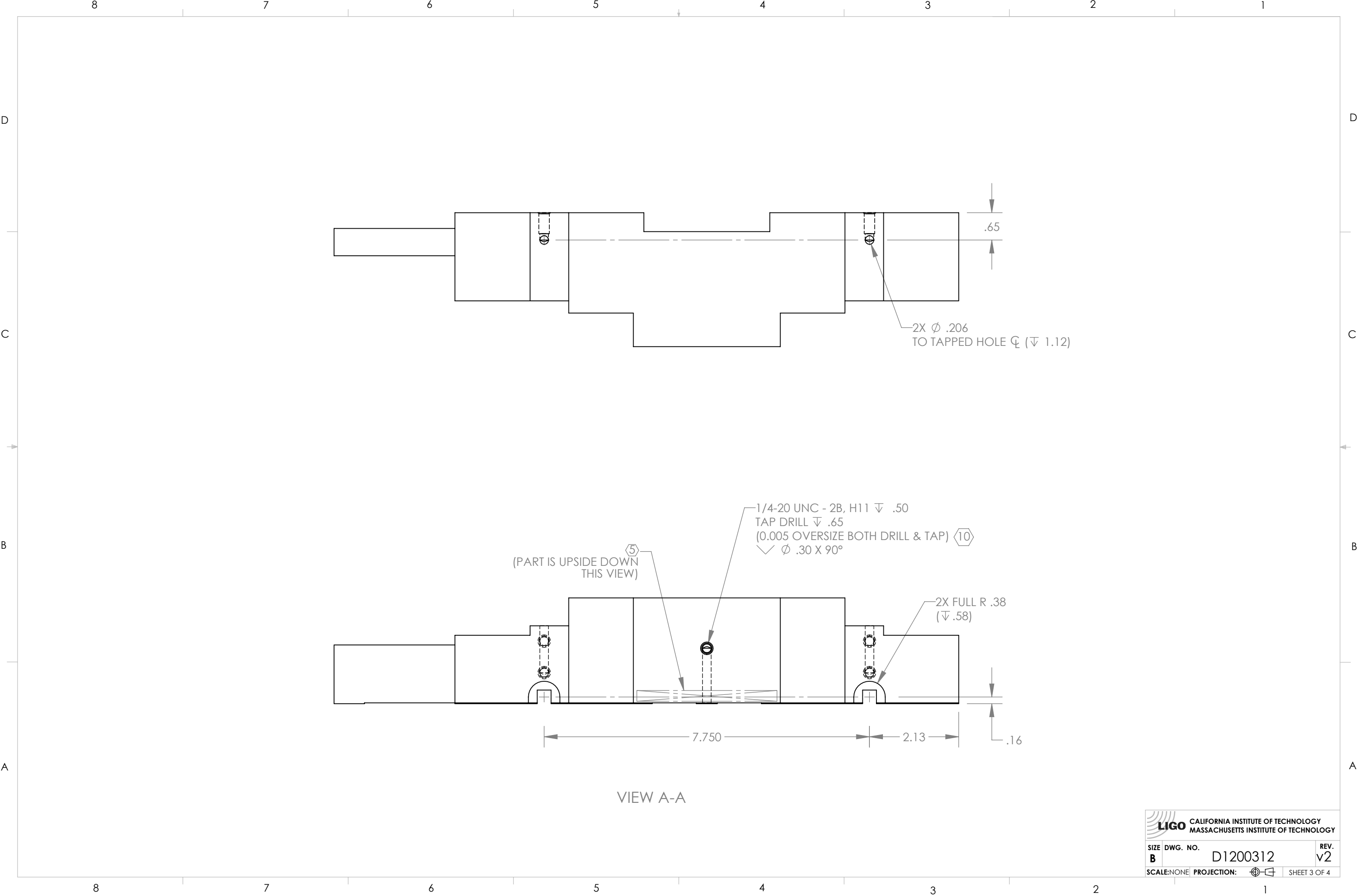
D1200312 dLIGO TMS Top Add Mass Bar, PART PDM REV: X-043, DRAWING PDM REV: X-004



**LIGO** CALIFORNIA INSTITUTE OF TECHNOLOGY  
 MASSACHUSETTS INSTITUTE OF TECHNOLOGY

SIZE	DWG. NO.	REV.
B	D1200312	v2
SCALE: NONE	PROJECTION:	SHEET 2 OF 4

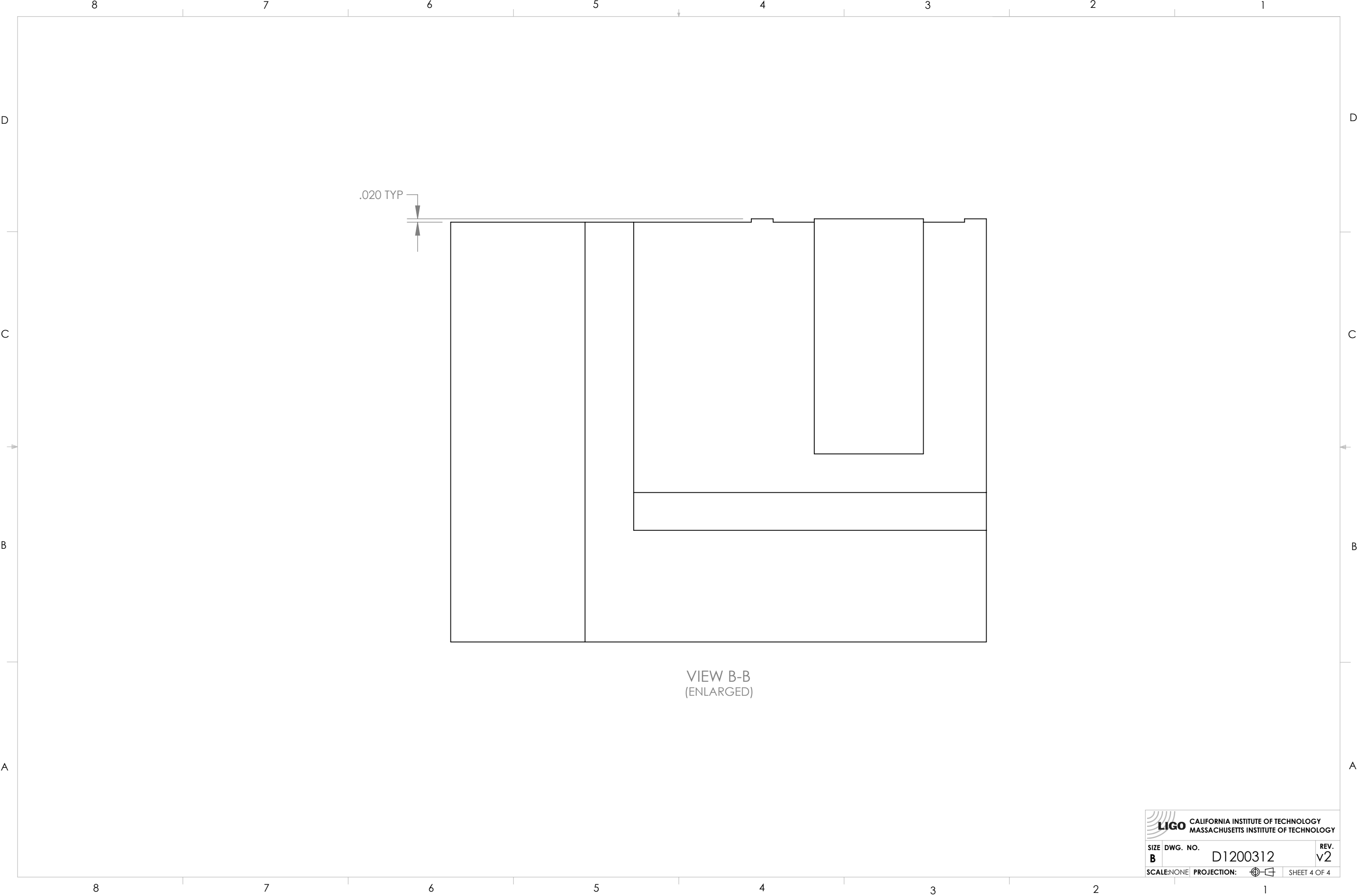
D1200312 dLIGO TMS Top Add Mass Bar, PART PDM REV: X-043, DRAWING PDM REV: X-004


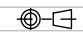


**LIGO** CALIFORNIA INSTITUTE OF TECHNOLOGY  
 MASSACHUSETTS INSTITUTE OF TECHNOLOGY

SIZE	DWG. NO.	REV.
<b>B</b>	D1200312	v2
SCALE: NONE	PROJECTION:	SHEET 3 OF 4

D1200312 aLIGO TMS Top Add Mass Bar, PART PDM REV: X-043, DRAWING PDM REV: X-004



 <b>CALIFORNIA INSTITUTE OF TECHNOLOGY</b> <b>MASSACHUSETTS INSTITUTE OF TECHNOLOGY</b>		
SIZE <b>B</b>	DWG. NO. D1200312	REV. v2
SCALE: NONE	PROJECTION: 	SHEET 4 OF 4