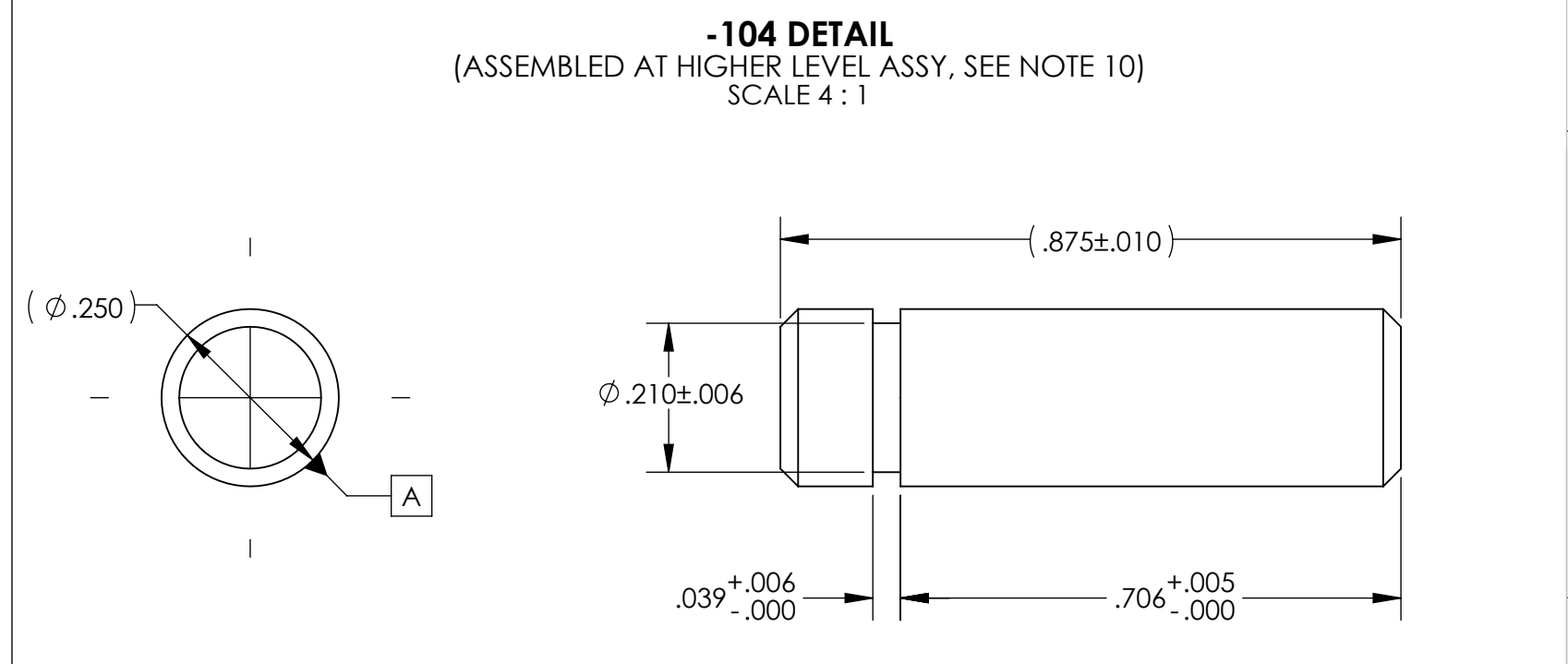
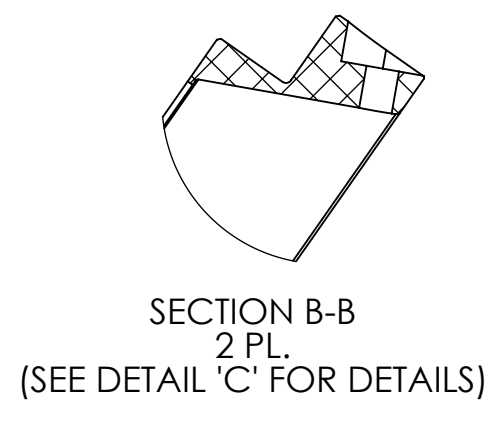
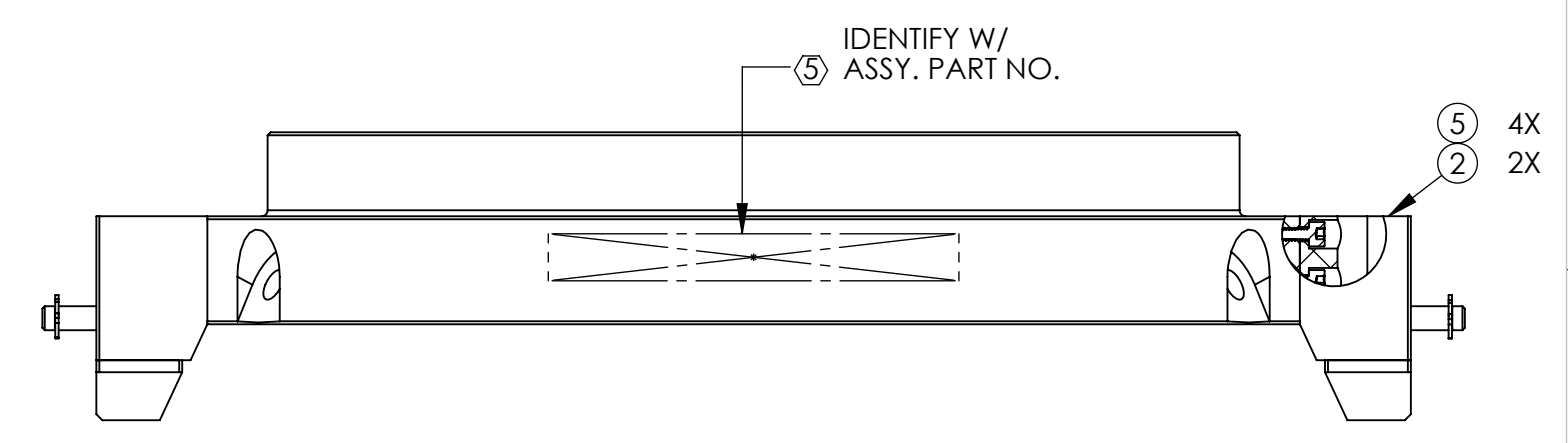
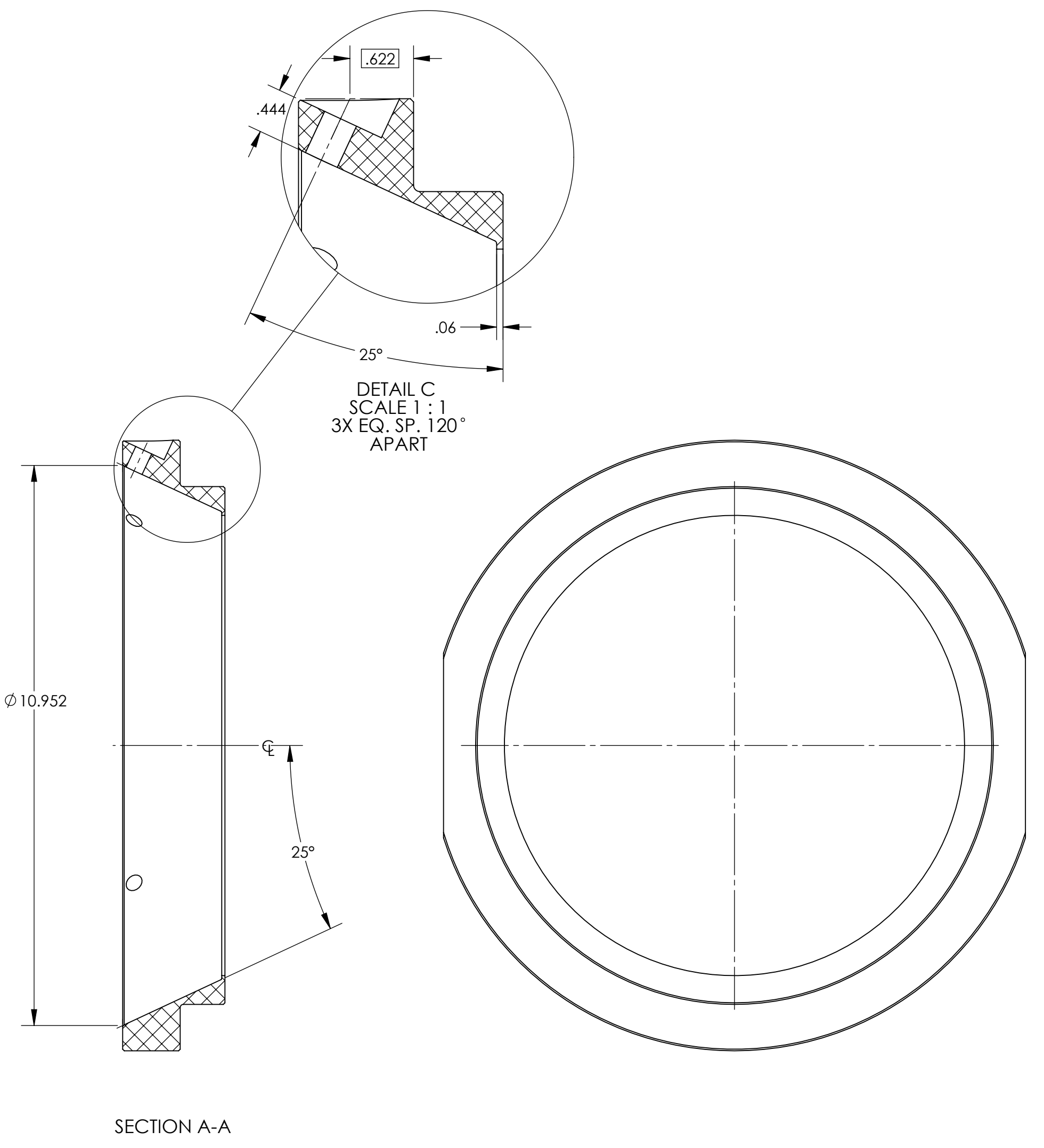
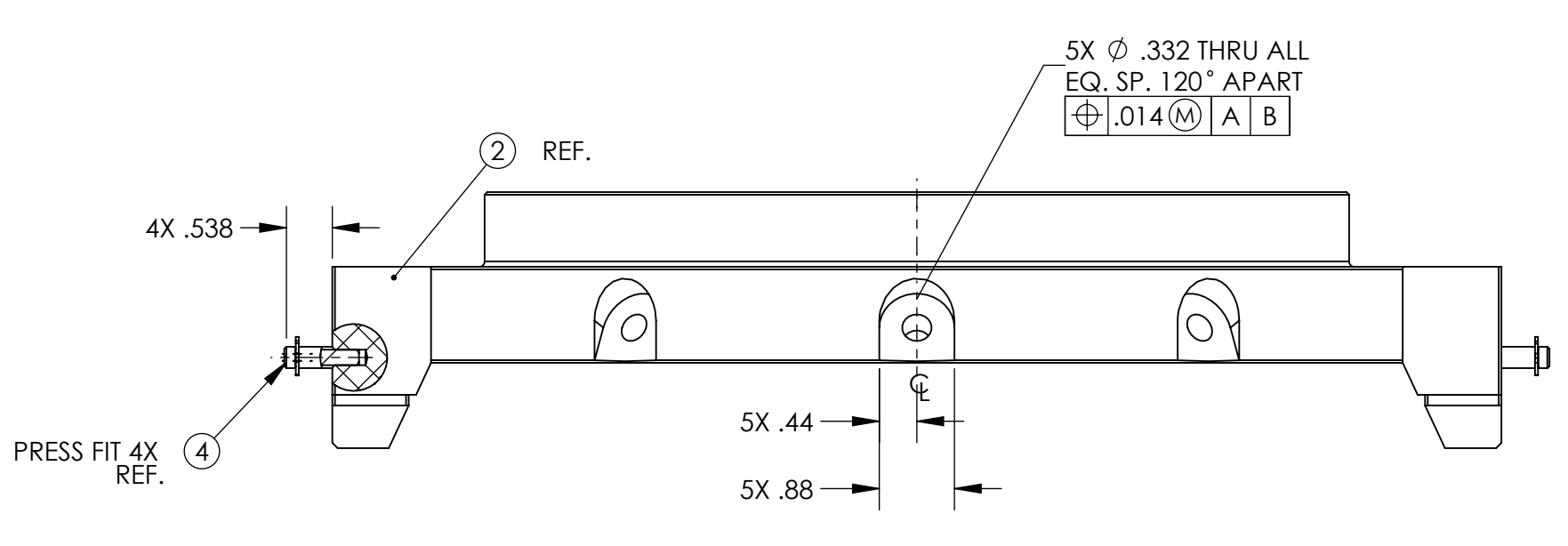
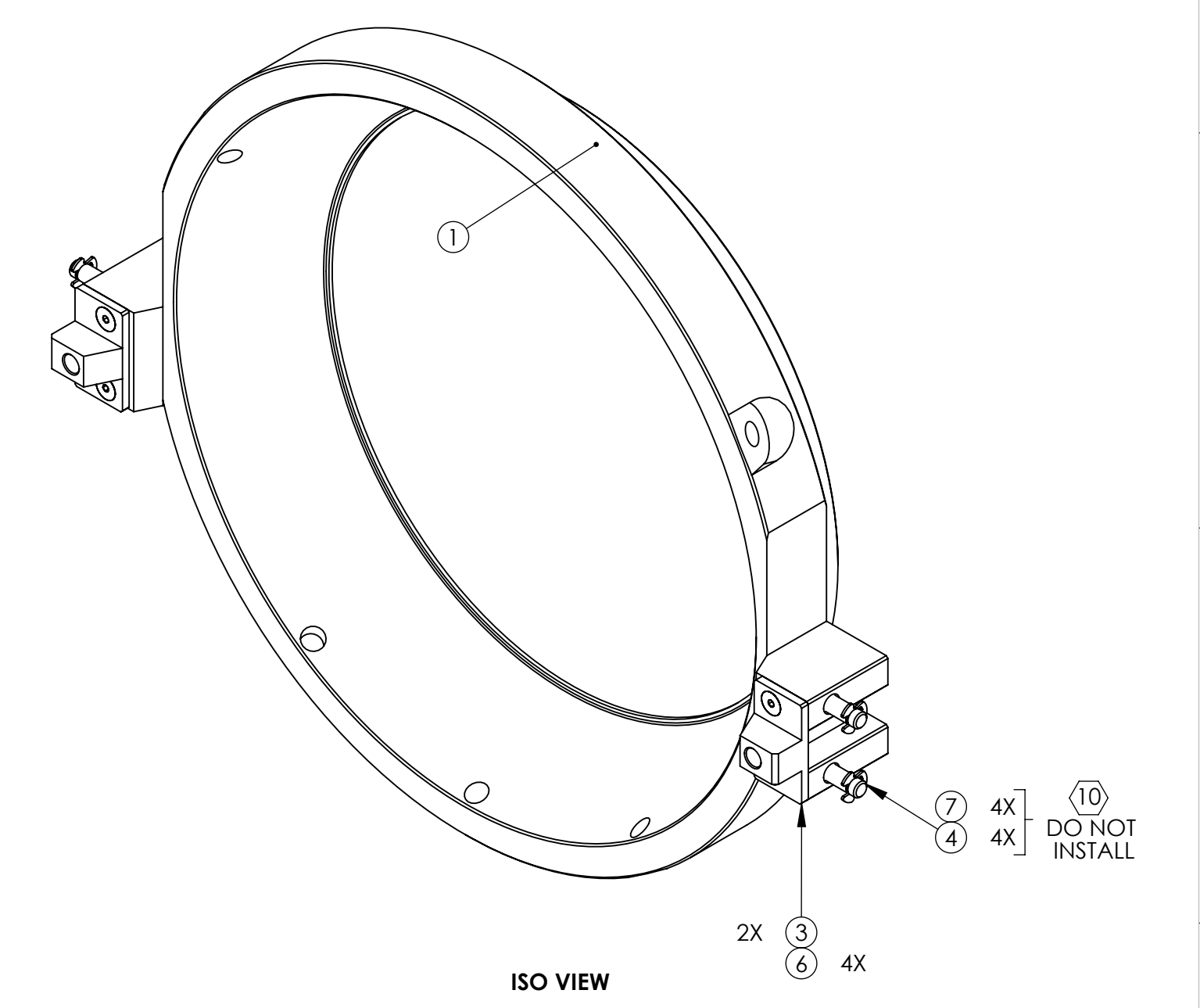
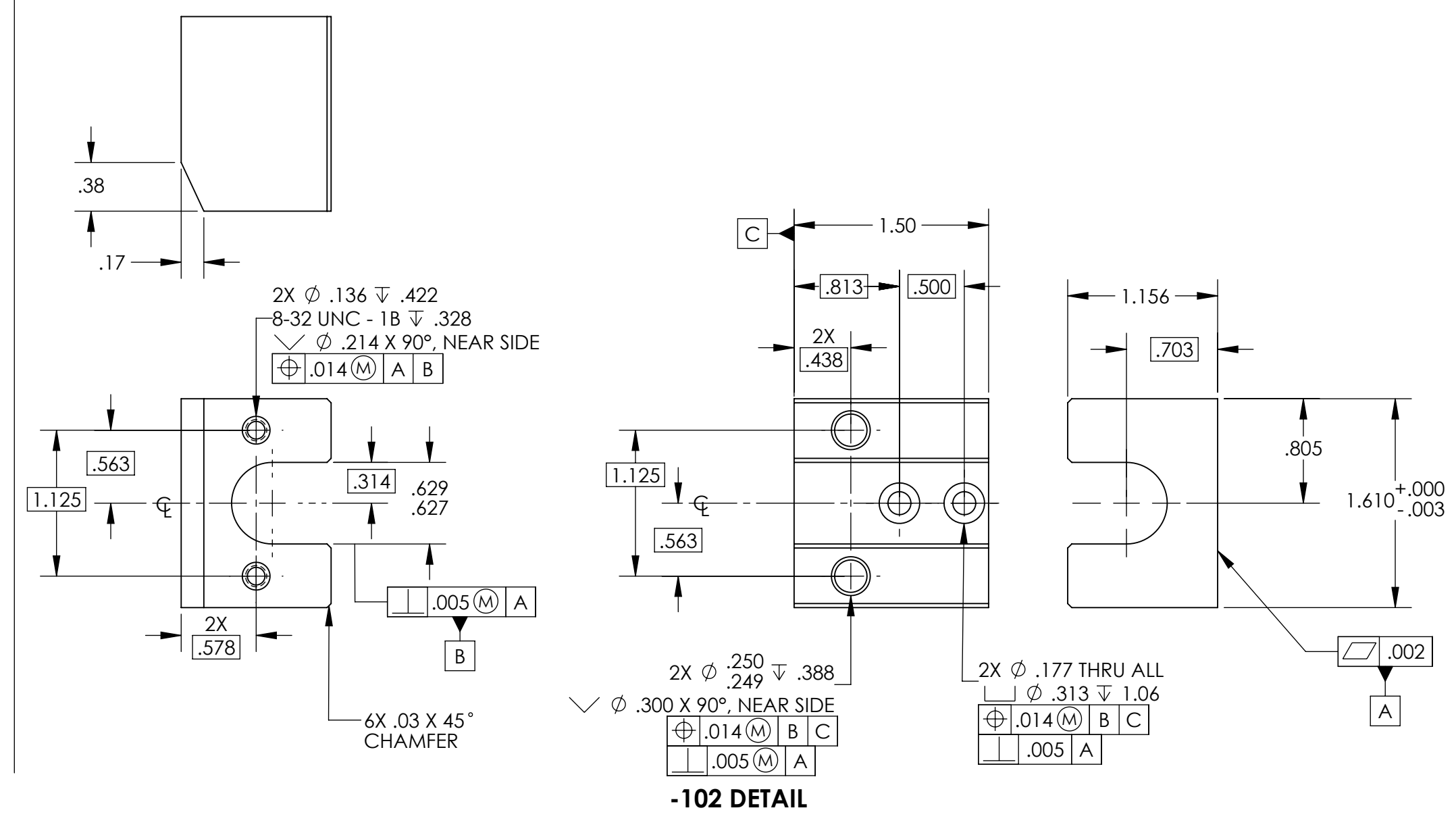
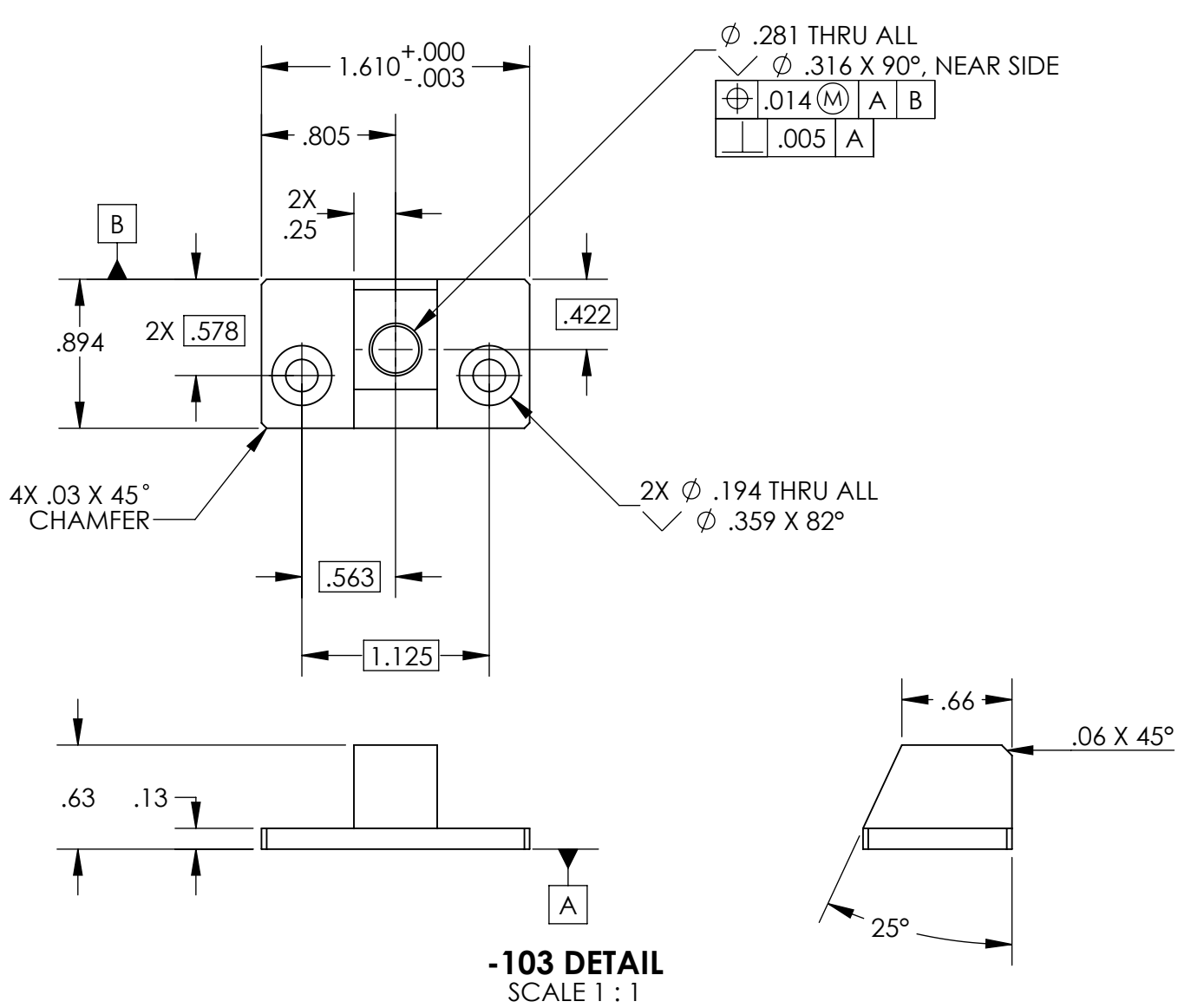


- NOTES CONTINUED:**
5. SCRIBE, ENGRAVE (A VIBRATORY TOOL MAY BE USED), LASER MARK OR MECHANICALLY STAMP (NO INKS OR DYES) DRAWING PART NUMBER, REVISION (AND VARIANT OR 'TYPE' IF APPLICABLE) ON NOTED SURFACE OF PART FOLLOWED ON THE NEXT LINE WITH A THREE DIGIT SERIAL NUMBER. SERIAL NUMBERS START AT 001 FOR THE FIRST ARTICLE AND PROCEED CONSECUTIVELY. USE MINIMUM 0.12" HIGH CHARACTERS, UNLESS THE SIZE OF THE PART DICTATES SMALLER CHARACTERS. EXAMPLE: DXXXXXX-VY, TYPE-XX, S/N XXX
 6. APPROXIMATE WEIGHT = 2.40 LB.
 7. MACHINE ALL SURFACES TO REMOVE OXIDES AND MILL FINISH. USE OF ABRASIVE REMOVAL TECHNIQUES IS NOT ALLOWED. REFER TO LIGO-E0900364
 8. ALL PARTS SHALL BE MANUFACTURED IN ACCORDANCE WITH LIGO SPECIFICATION E0900364.
 9. UNLESS OTHERWISE SPECIFIED MACHINE FILLET RADII .015 - .030
 10. DO NOT INSTALL RETAINING RINGS (ITEM 7), AND DOWEL PINS (ITEM 4), BAG, TAG, AND ATTACH TO ASSY.



ITEM NO.	PART NUMBER	DESCRIPTION	MATERIAL	REQ
7	94751A757	McMASTER-CARR OR EQ.	RETAINING RING, SIDE MT., 1/4 SHAFT	300 SSSL 4
6	MS24671-13	OR EQ.	SCREW, FHSC, 8-32 X .38 LG.	300 SSSL 4
5	MS16995-25	OR EQ.	SCREW, SHC, 8-32 X .38 LG.	300 SSSL 4
4	D1200484-104	ALIGO, COC, ETM/ITM FC SPRAY GUARD ASSY., DOWEL PIN (GROOVED)	MAKE FROM: McMASTER-CARR PART NO. 90145A541	4
3	D1200484-103	ALIGO, COC, ETM/ITM FC SPRAY GUARD ASSY., STRIKE PLATE	6061-T6 Al	2
2	D1200484-102	ALIGO, COC, ETM/ITM FC SPRAY GUARD ASSY., GUIDE RAIL	PTFE (general)	2
1	D1200484-101	ALIGO, COC, ETM/ITM FC SPRAY GUARD, MT. RING	HDPE	1

NOTES AND TOLERANCES: (UNLESS OTHERWISE SPECIFIED)

1. INTERPRET DRAWING PER ASME Y14.5-1994.
2. REMOVE ALL SHARP EDGES, .005-.015. FOR MACHINED PARTS. ROUND ALL EDGES APPROXIMATELY R.02.
3. DO NOT SCALE FROM DRAWING.
4. ALL MACHINING FLUIDS MUST BE FULLY SYNTHETIC, FULLY WATER SOLUBLE AND FREE OF SULFUR, SILICONE, AND CHLORINE.

DIMENSIONS ARE IN INCHES

TOLERANCES:
.XX ± .01
.XXX ± .005

ANGULAR ± 0.5°

MATERIAL SEE PARTS LIST **FINISH** N/A μinch

SYSTEM ADVANCED LIGO **SUB-SYSTEM** COC

PART NAME ALIGO, COC, ETM/ITM FC SPRAY GUARD, MT. RING

DESIGNER E.SANCHEZ **DATE** 16 MAR 2012 **SIZE** DWG. NO. **D** **REV.** v5

DRAFTER E.SANCHEZ **CHECKER** SEE DCC **APPROVAL** SEE DCC

SCALE: 1:2 **PROJECTION:**

PARTS LIST

NEXT ASSY D1200490

SHEET 1 OF 1