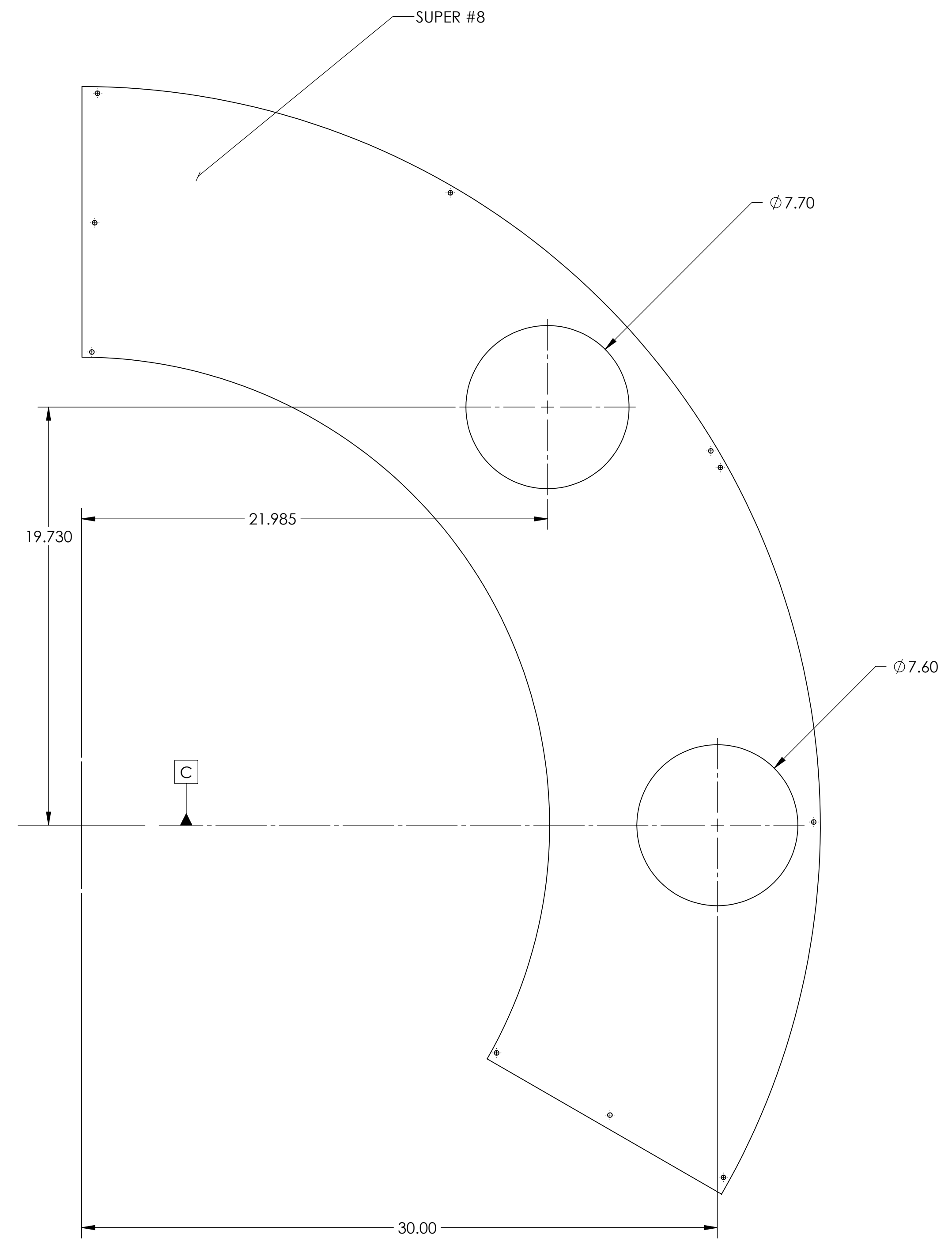
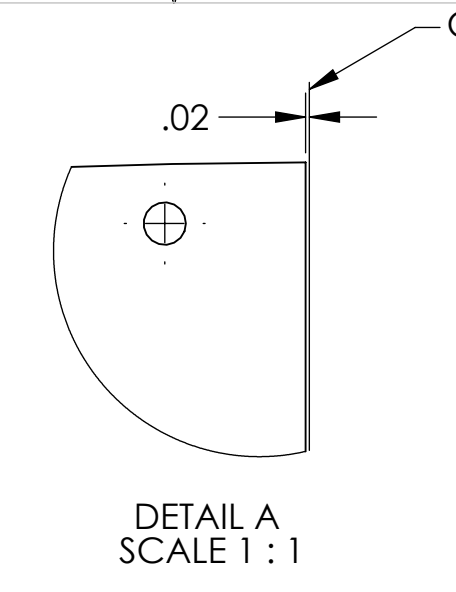
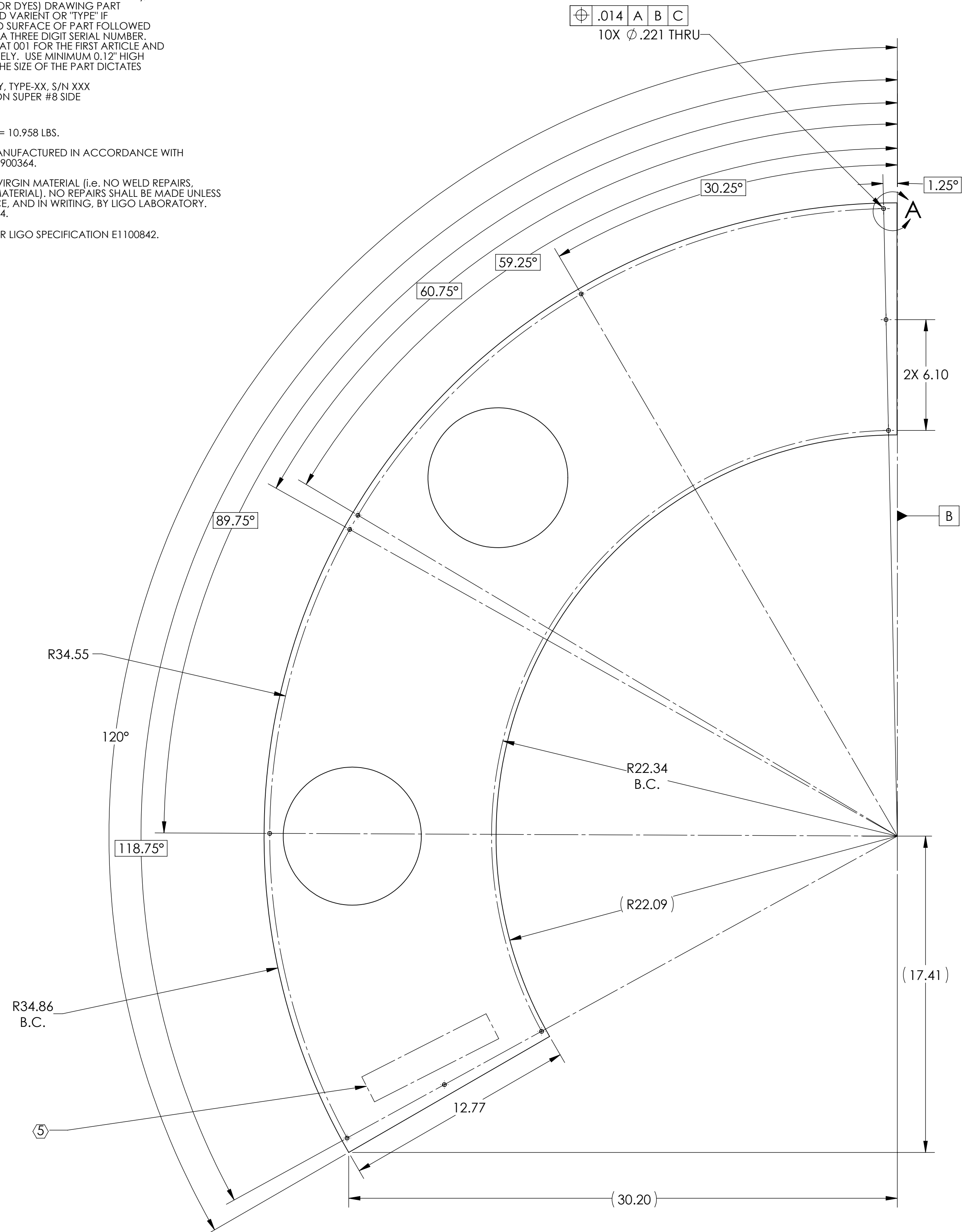


NOTES CONTINUED:
 5. SCRIBE, ENGRAVE (A VIBRATORY TOOL MAY BE USED), LASER MARK (NO INKS OR DYES) DRAWING PART NUMBER, REVISION [AND VARIANT OR TYPE IF APPLICABLE] ON NOTED SURFACE OF PART FOLLOWED ON THE NEXT LINE WITH A THREE DIGIT SERIAL NUMBER. SERIAL NUMBERS START AT 001 FOR THE FIRST ARTICLE AND PROCEED CONSECUTIVELY. USE MINIMUM 0.12" HIGH CHARACTERS, UNLESS THE SIZE OF THE PART DICTATES SMALLER CHARACTERS.
 EXAMPLE: DXXXXXX-VY, TYPE-XX, S/N XXX
 DO NOT APPLY MARK ON SUPER #8 SIDE

- 6. APPROXIMATE WEIGHT = 10.958 LBS.
- 7. ALL PARTS SHALL BE MANUFACTURED IN ACCORDANCE WITH LIGO SPECIFICATION E0900364.
- 8. ALL MATERIAL IS TO BE VIRGIN MATERIAL (i.e. NO WELD REPAIRS, PLUGS OR RECYCLED MATERIAL), NO REPAIRS SHALL BE MADE UNLESS APPROVED IN ADVANCE, AND IN WRITING, BY LIGO LABORATORY. REFER TO LIGO-E0900364.
- 9. PART TO BE OXIDIZED PER LIGO SPECIFICATION E1100842.



REV.	DATE	DCN #	DRAWING TREE #
v1	29 OCT 2012	E1000360-v3	-
-	-	-	-
-	-	-	-

NOTES AND TOLERANCES: (UNLESS OTHERWISE SPECIFIED)				LIGO CALIFORNIA INSTITUTE OF TECHNOLOGY MASSACHUSETTS INSTITUTE OF TECHNOLOGY		PART NAME		
DIMENSIONS ARE IN INCHES TOLERANCES: .XX ± .03 .XXX ± .010 ANGULAR ± 0.5°				1. INTERPRET DRAWING PER ASME Y14.5-1994. 2. REMOVE ALL SHARP EDGES, .005-.015, FOR MACHINED PARTS. ROUND ALL EDGES APPROXIMATELY R.02 FOR SHEET METAL PARTS. 3. DO NOT SCALE FROM DRAWING. 4. ALL MACHINING FLUIDS MUST BE FULLY SYNTHETIC, FULLY WATER SOLUBLE AND FREE OF SULFUR, SILICONE, AND CHLORINE.		LEFT HALF FACE, ETMY		
						MATERIAL: 18 GAUGE 304 SSSL FINISH: SUPER #8 (9)		SYSTEM: ADVANCED LIGO SUB-SYSTEM: AOS DESIGNER: TQ, NGUYEN DRAFTER: TQ, NGUYEN CHECKER: L. AUSTIN APPROVAL: C. TORRIE
				NEXT ASSY: D1003227		DWG. NO.: D1200516 SCALE: 1:4 PROJECTION:		REV.: v1 SHEET 1 OF 1

D:\2005\1\lIGO_MonField_Cryo_Baffle_Leff_Half_Face_Plate_ETMY_PART.PDM.REV.X:008.DRAWING.PDM.REV.X:006