

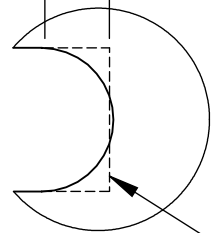
8 7 6 5 4 3 2 1

- NOTES CONTINUED:
- 5 BAG AND TAG PARTS WITH THEIR DRAWING PART NUMBER, REVISION, VARIANT OR "TYPE" (IF APPLICABLE), AND QUANTITY. IF PARTS ARE TOO SMALL TO SCRIBE, BAGGING AND TAGGING ALONE IS SUFFICIENT. EXAMPLE (TAG): DXXXXXX-VY, TYPE-XX, QTY: TBD
 - 6 APPROXIMATE WEIGHT = .01 LB [3G]
 - 7 ALL PARTS TO BE MANUFACTURED IN ACCORDANCE WITH LIGO SPECIFICATION E0900364.
 - 8 ALL MATERIAL IS TO BE VIRGIN MATERIAL (i.e. NOT WELD REPAIRS OR PLUGS UNLESS APPROVED IN ADVANCE IN WRITING BY LIGO, REFER TO LIGO-E0900364.
 - 9 NO REPAIRS SHALL BE MADE UNLESS APPROVED IN ADVANCE, AND IN WRITING, BY LIGO LABORATORY. IN GENERAL WELD REPAIRS AND PRESS FIT INSERT REPAIRS ARE NEVER ACCEPTABLE; THE MATERIAL SHOULD BE MADE WITH VIRGIN MATERIAL. SPECIAL CIRCUMSTANCES CAN BE REVIEWED IF / WHEN BROUGHT TO THE ATTENTION OF LIGO CONTRACTING OFFICER'S REPRESENTATIVE (COTR) THROUGH A MATERIAL REVIEW BOARD (MRB) PROCESS, REFER TO LIGO-E0900364.
 - 10 MCMASTER CARR# 9011K92, ASTM 304 SHIM STOCK .020 X 8" X 12", FULL HARD, FROM TRINITY BRAND INDUSTRIES.
 - 11 ELECTROPOLISH TO REMOVE .0005 - .001 PER SURFACE

REV.	DATE	DCN #	DRAWING TREE #
v1	09 APR 2012	E1200317	-
v2	1-4-13	to follow	E1200793
v3	2-27-13	to follow	E1200793

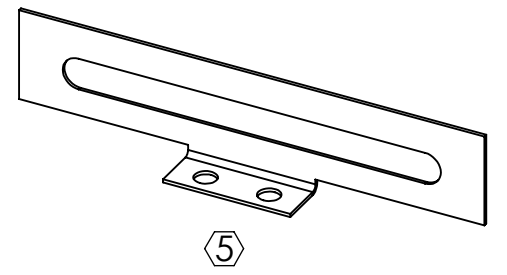
12. .180" slot and bottom .30" wide feature to be parallel w/in .005

(2X .084)



DETAIL A
SCALE 4:1

2X REF: SQUARE END
OPTIONAL



D

D

C

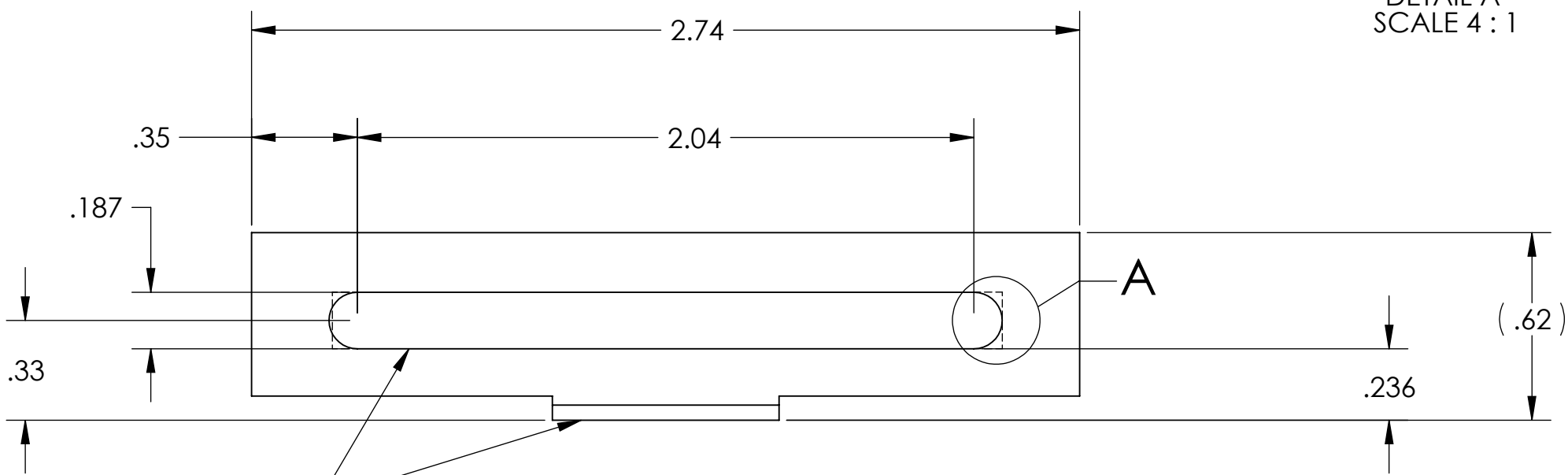
C

B

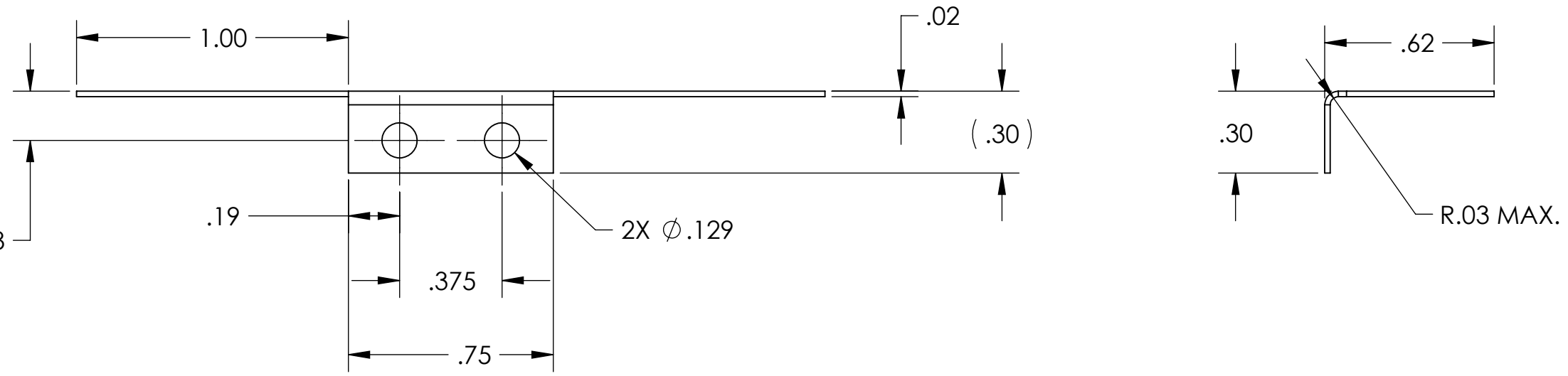
B

A

A



see note 12.



D1200579 aLIGO TMS Focus Slide Lock, PART PDM REV: X-001, DRAWING PDM REV: X-001

NOTES AND TOLERANCES: (UNLESS OTHERWISE SPECIFIED)	
DIMENSIONS ARE IN INCHES	
TOLERANCES: .XX ± .01 .XXX ± .005	
ANGULAR ± 1.0°	
MATERIAL	FINISH
10	63 μinch Ra 11

CALIFORNIA INSTITUTE OF TECHNOLOGY MASSACHUSETTS INSTITUTE OF TECHNOLOGY		PART NAME	
ADVANCED LIGO		aLIGO TMS FOCUS SLIDE LOCK	
DESIGNER	K. MAILAND	09 APR 2012	SIZE DWG. NO.
DRAFTER	E. SANCHEZ	09 APR 2012	B D1200579
CHECKER	k mailand	2-27-13	REV.
APPROVAL	SEE DCC	SEE DCC	v3
NEXT ASSY		SCALE: 2:1	PROJECTION:
D1102365		SHEET 1 OF 1	

8 7 6 5 4 3 2 1