

1 DRAWING TREE #
E1200541-V1
E1200541-V1

2 DCN #
E1200540-V1
E1200540-V1

3 DATE
28-MAY-12
06-JUN-12

4 REV.
V1
V2

5 PART NAME
SHUTTER CLAMP, LEFT SIDE

6 DESIGNER
M. JACOBSON

7 CHECKER
M. JACOBSON

8 APPROVAL
M. JACOBSON

9 Dwg. No.
D1200787

10 Scale
1:1

11 Sheet of 1

12 Date
03/14/14

13 Rev.
V2

14 Part No.
D1200787

15 Material
6061 Alloy

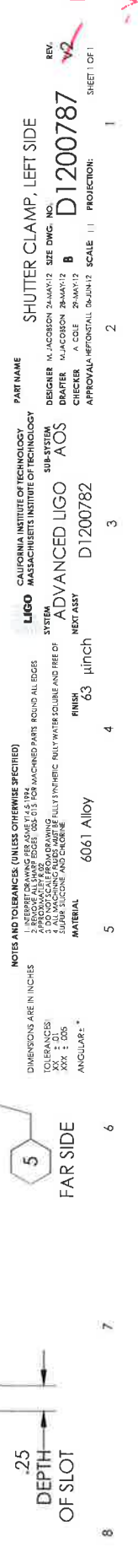
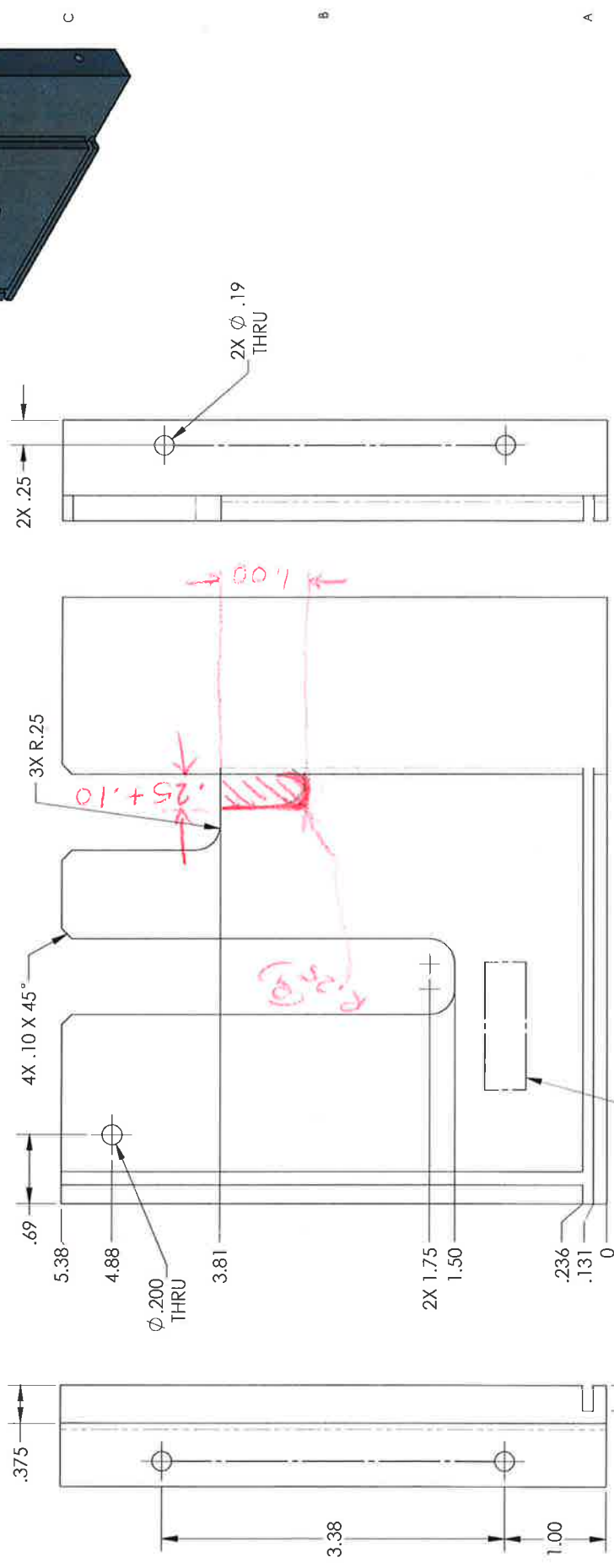
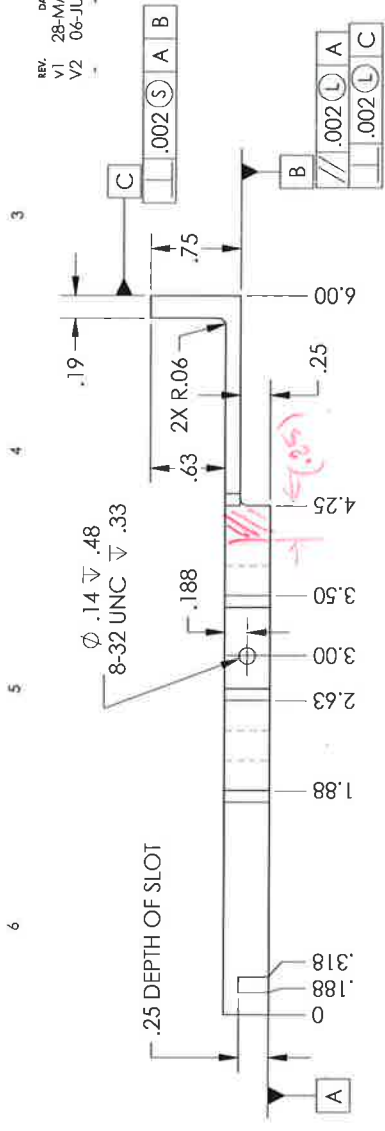
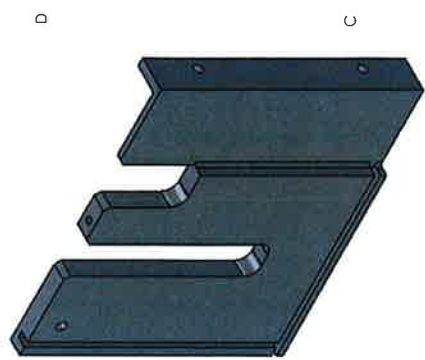
16 Finish
63 µinch

17 System
AOS

18 Next Assy
D1200782

NOTES CONTINUED:
 1. Scribe engrave (a vibratory tool may be used).
 2. Dimension lines shall be drawn parallel to the feature being dimensioned.
 3. Dimension lines shall be drawn in the direction of measurement.
 4. Dimension lines shall be drawn in the direction of measurement.
 5. Dimension lines shall be drawn in the direction of measurement.
 6. Dimension lines shall be drawn in the direction of measurement.
 7. Dimension lines shall be drawn in the direction of measurement.
 8. Dimension lines shall be drawn in the direction of measurement.
 9. Dimension lines shall be drawn in the direction of measurement.
 10. Dimension lines shall be drawn in the direction of measurement.
 11. Dimension lines shall be drawn in the direction of measurement.
 12. Dimension lines shall be drawn in the direction of measurement.
 13. Dimension lines shall be drawn in the direction of measurement.
 14. Dimension lines shall be drawn in the direction of measurement.
 15. Dimension lines shall be drawn in the direction of measurement.
 16. Dimension lines shall be drawn in the direction of measurement.
 17. Dimension lines shall be drawn in the direction of measurement.
 18. Dimension lines shall be drawn in the direction of measurement.
 19. Dimension lines shall be drawn in the direction of measurement.
 20. Dimension lines shall be drawn in the direction of measurement.

6. APPROXIMATE WEIGHT = 669 LB.
 7. MACHINE ALL SURFACES TO REMOVE OXIDES AND MILL FINISH.
 8. REFER TO THE LIGO SPECIFICATION FOR MANUFACTURING TECHNIQUES IS NOT ALLOWED.
 9. ALL PARTS SHALL BE MANUFACTURED IN ACCORDANCE WITH
 LIGO SPECIFICATION 69000364.
 10. ALL MATERIALS TO BE VIRGIN MATERIAL (i.e. NO WELD REPAIRS
 PLUGS OR RECYCLED MATERIAL). NO REPAIRS SHALL BE MADE UNLESS
 REFER TO LIGO 69000364.
 11. ALL PARTS SHALL BE MANUFACTURED IN ACCORDANCE WITH
 LIGO SPECIFICATION 69000364.
 12. ALL MATERIALS TO BE VIRGIN MATERIAL (i.e. NO WELD REPAIRS
 PLUGS OR RECYCLED MATERIAL). NO REPAIRS SHALL BE MADE UNLESS
 REFER TO LIGO 69000364.



SHUTTER CLAMP, LEFT SIDE
 DESIGNER: M. JACOBSON
 CHECKER: M. JACOBSON
 APPROVAL: M. JACOBSON

CAUTION: THIS DRAWING IS THE PROPERTY OF LIGO. IT IS TO BE USED ONLY FOR THE PURPOSES SPECIFIED. IT IS NOT TO BE REPRODUCED OR TRANSMITTED IN ANY FORM OR BY ANY MEANS, ELECTRONIC OR MECHANICAL, INCLUDING PHOTOCOPYING, RECORDING, OR BY ANY INFORMATION STORAGE AND RETRIEVAL SYSTEM. LIGO ASSUMES NO LIABILITY FOR DAMAGES OF ANY KIND, INCLUDING CONSEQUENTIAL DAMAGES, ARISING FROM THE USE OF THIS DRAWING. LIGO SPECIFICATION 69000364.