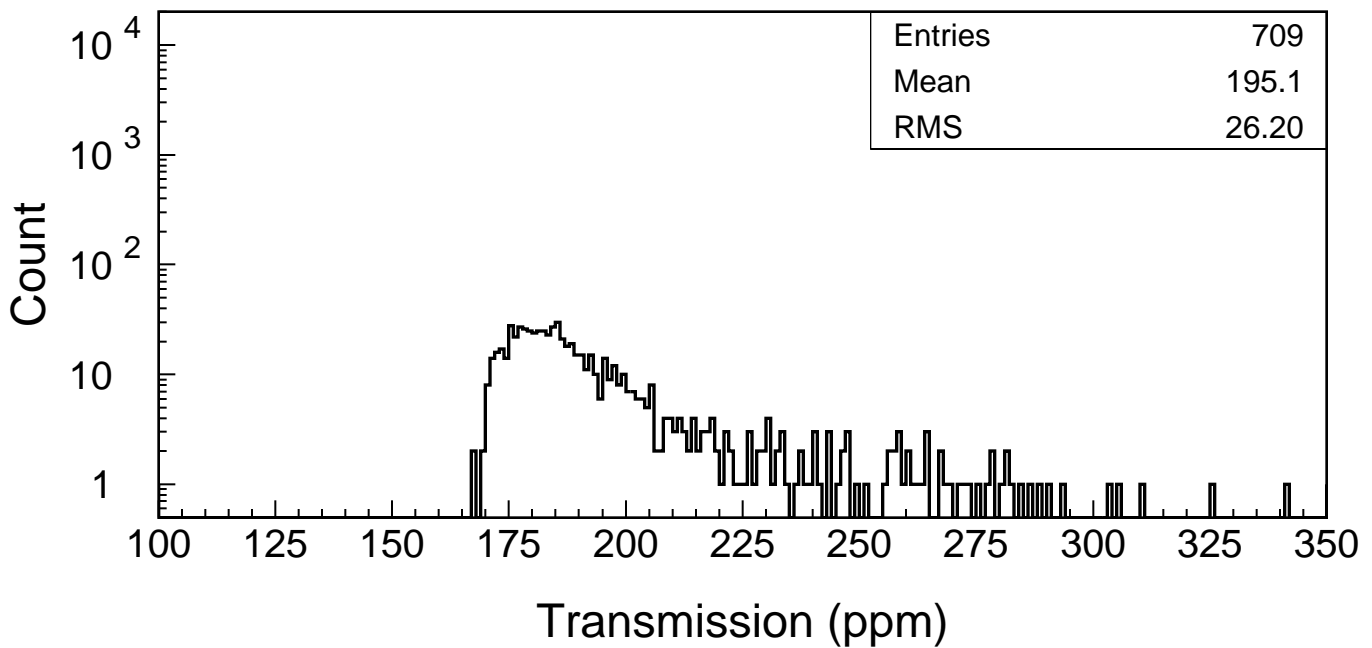
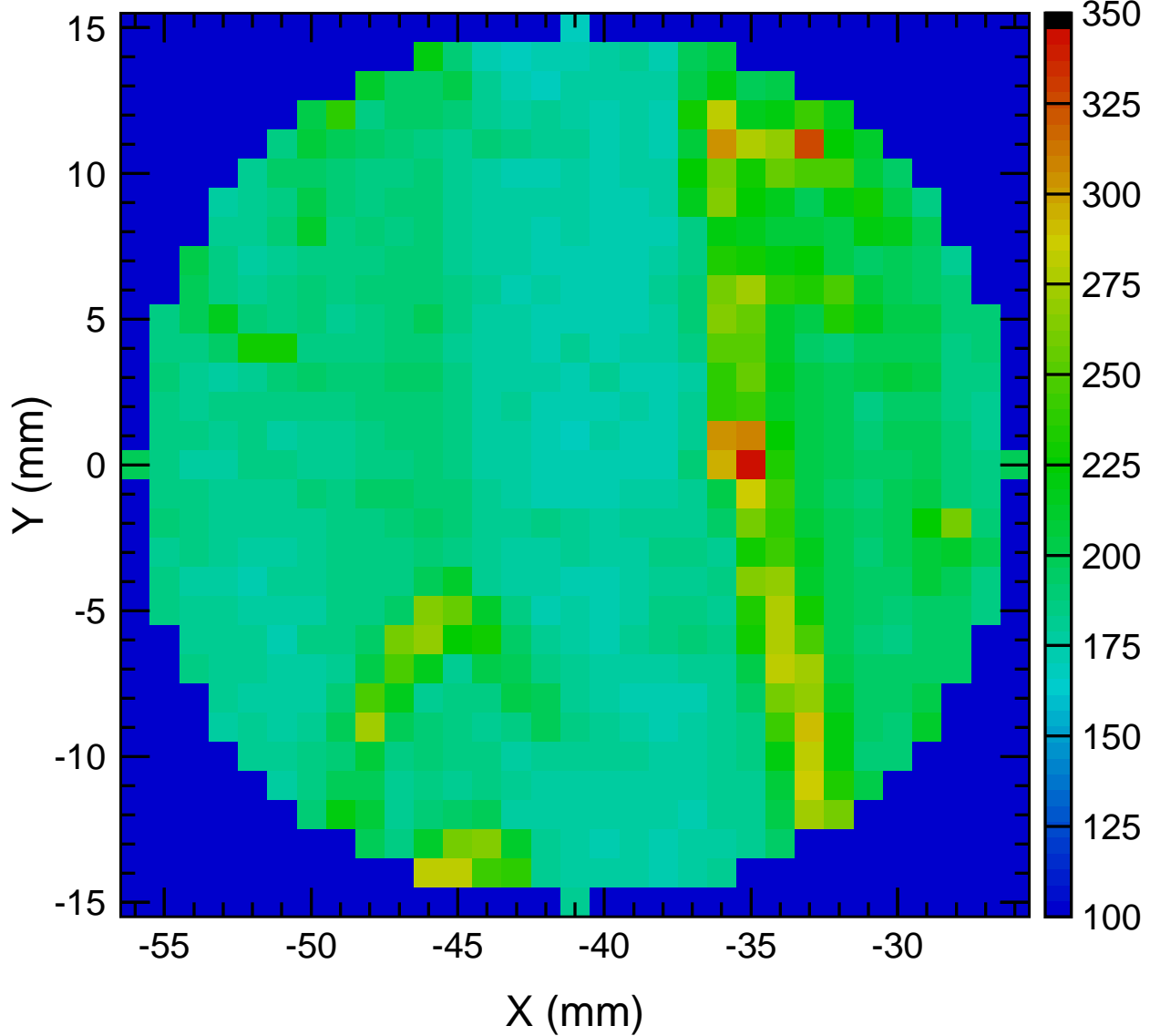
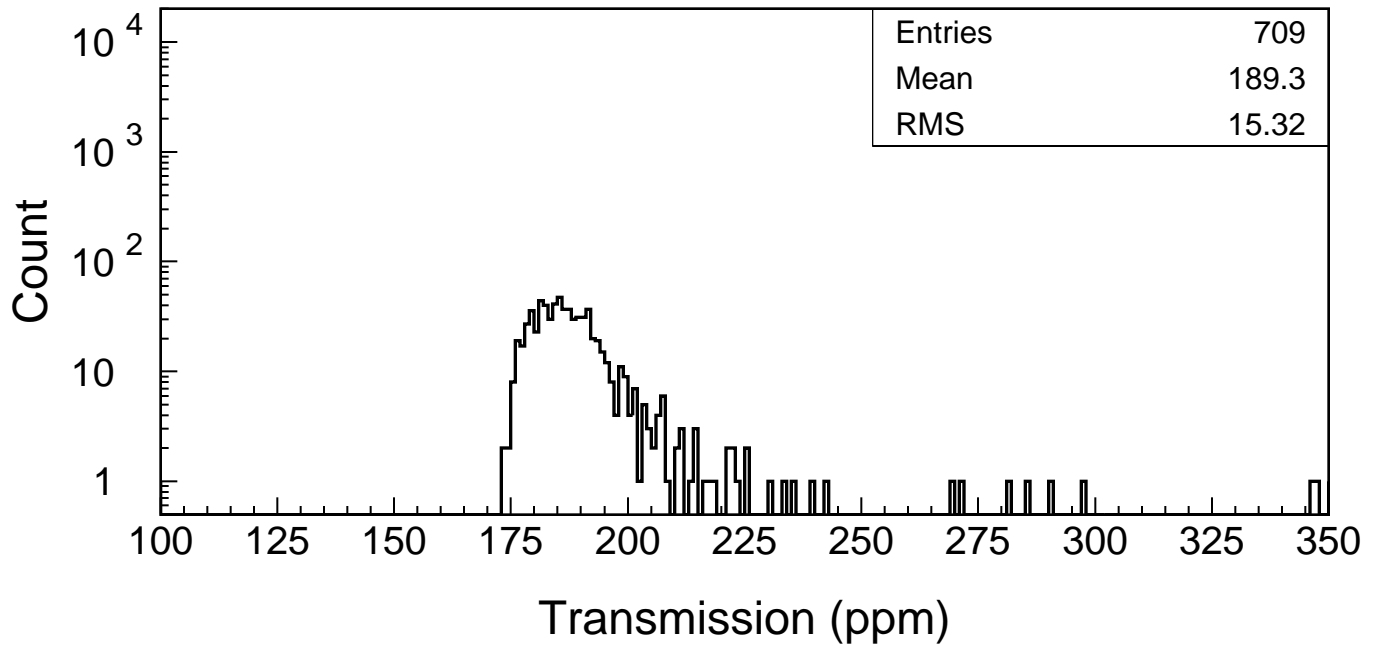
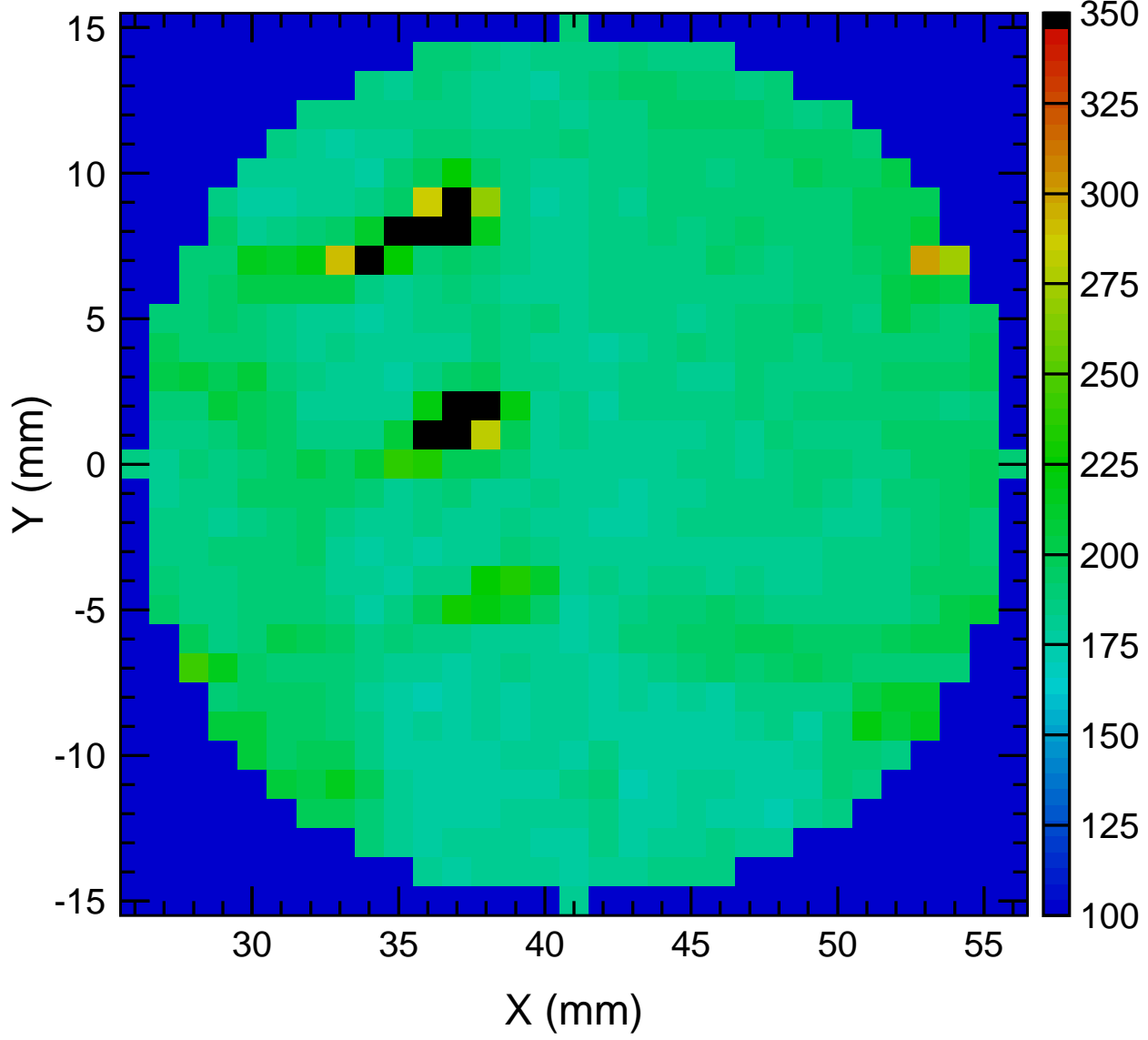


LIGO-E1200515-v1

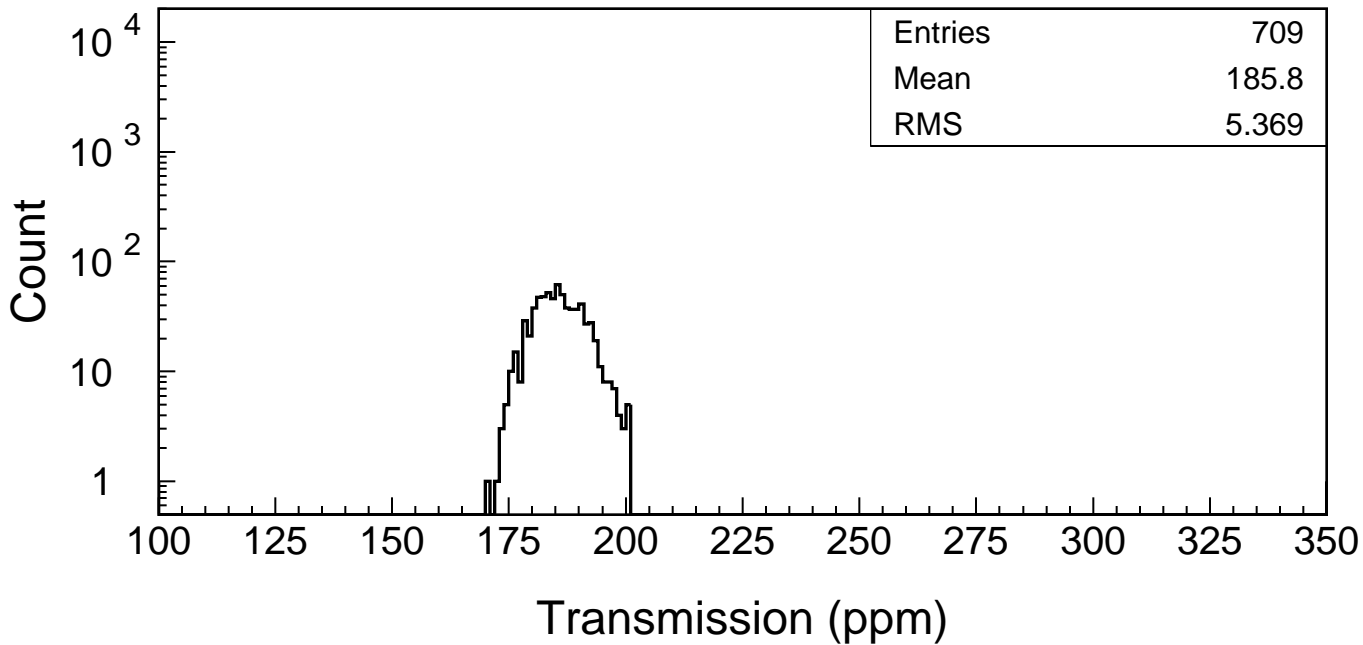
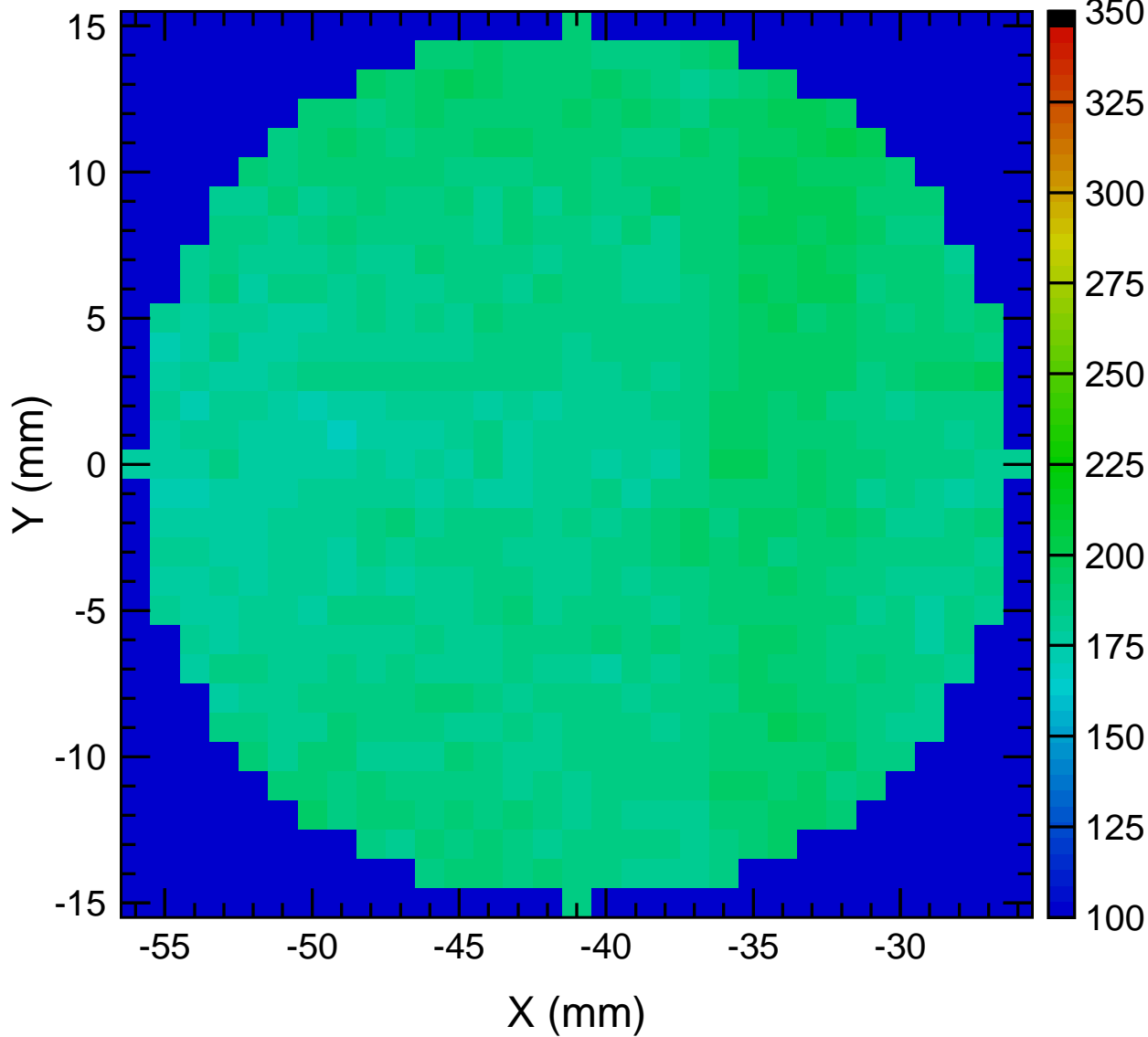
IMCF05 AR Reflection ($\lambda=1064$ nm, $\theta_i=45^\circ$, S pol, $\phi_{\text{beam}}=1\text{mm}$, Arrow@Y-) (ppm)



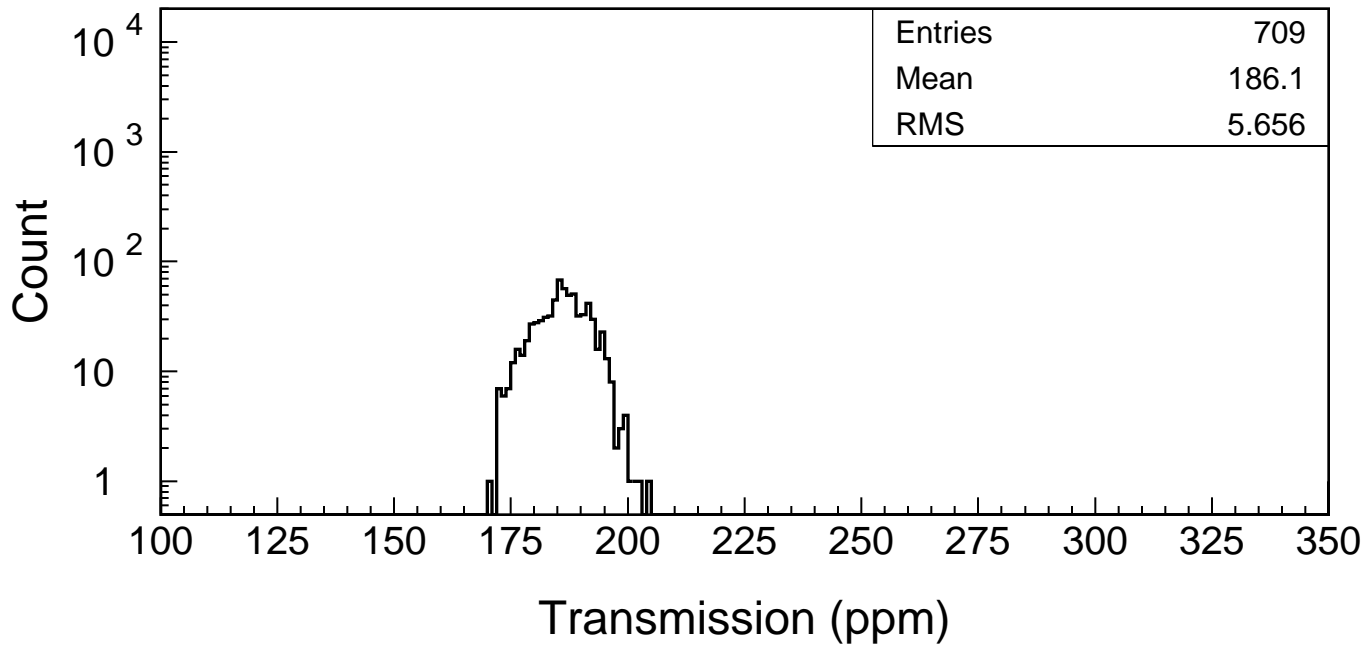
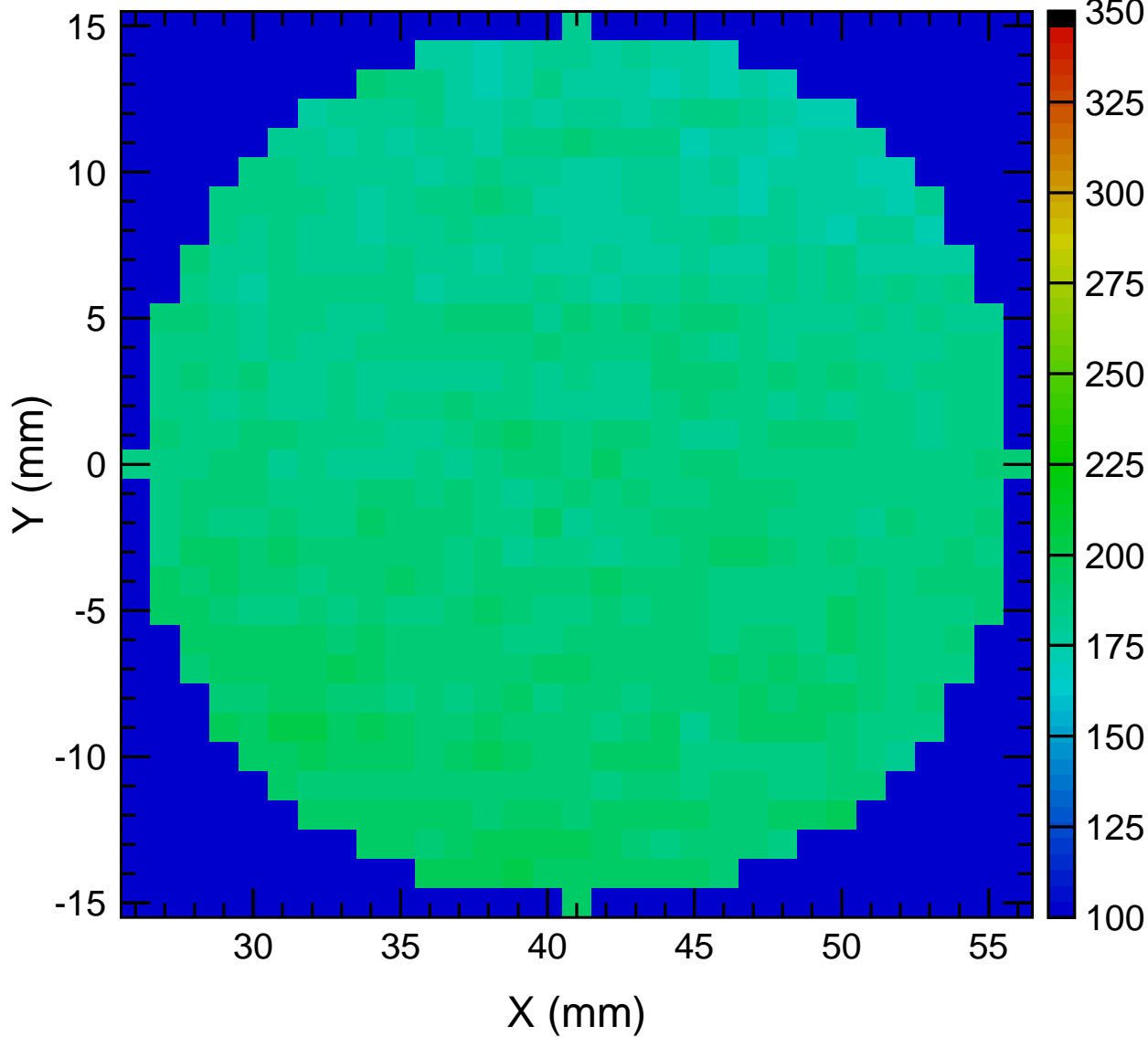
IMCF05 AR Reflection ($\lambda=1064$ nm, $\theta_i=45^\circ$, S pol, $\phi_{\text{beam}}=1$ mm, Arrow@Y-) (ppm)



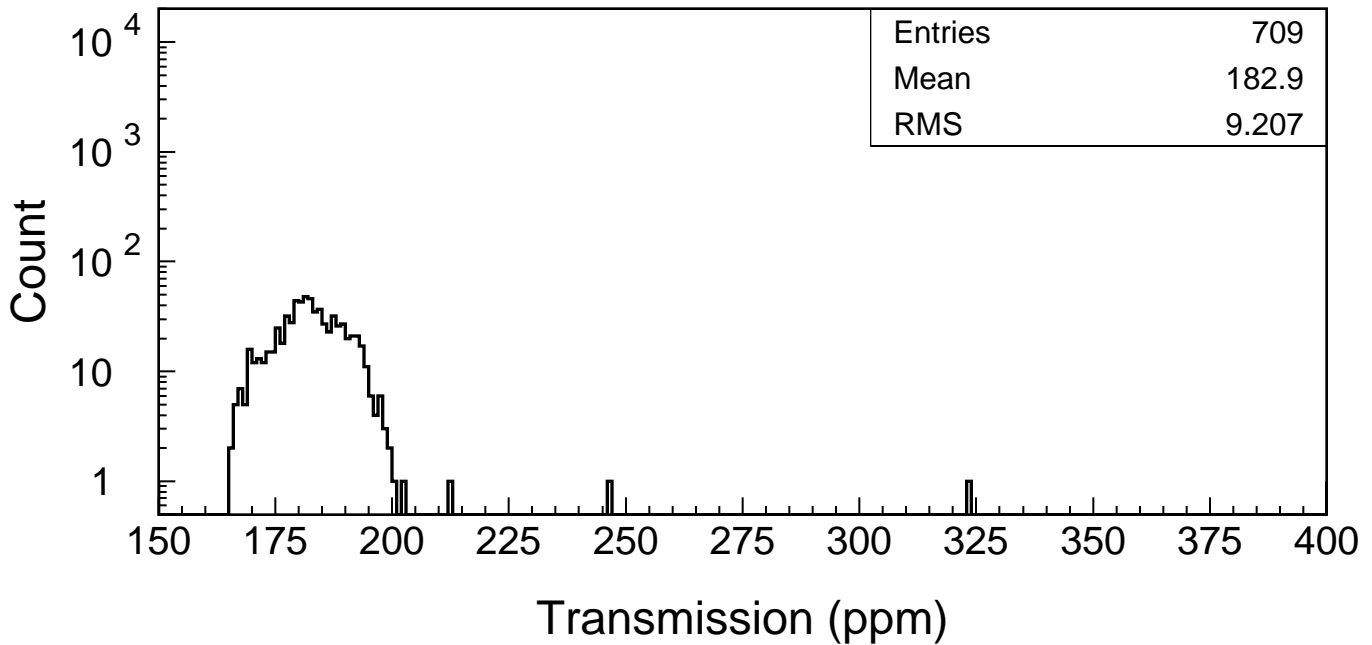
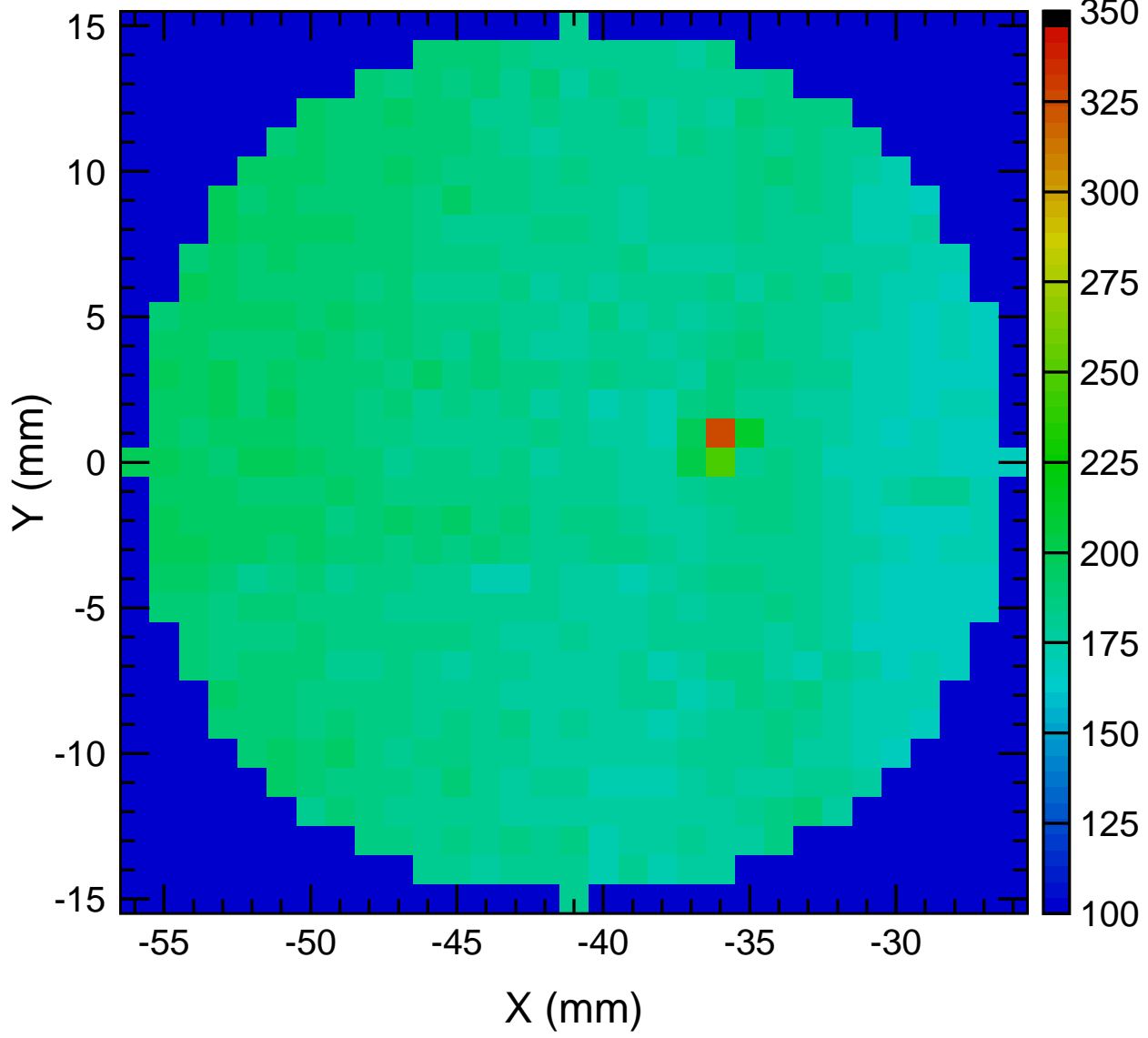
IMCF06 AR Reflection ($\lambda=1064$ nm, $\theta_i=45^\circ$, S pol, $\phi_{\text{beam}}=1$ mm, Arrow@Y-) (ppm)



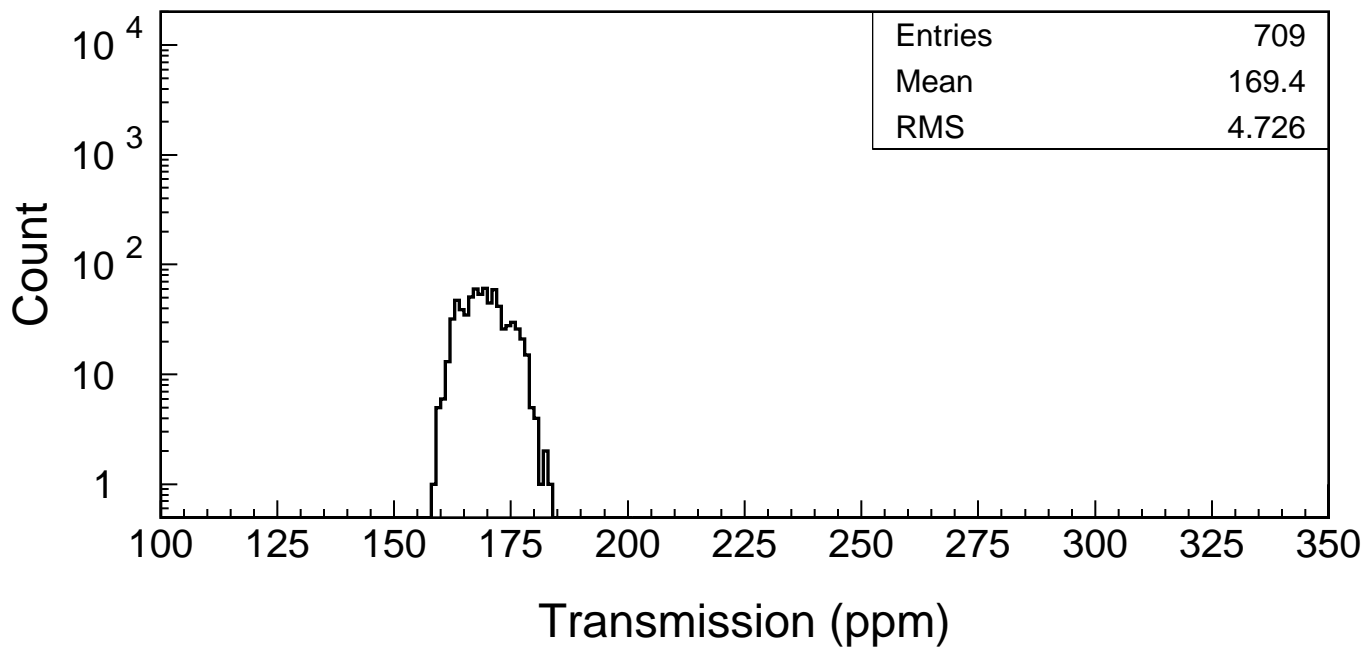
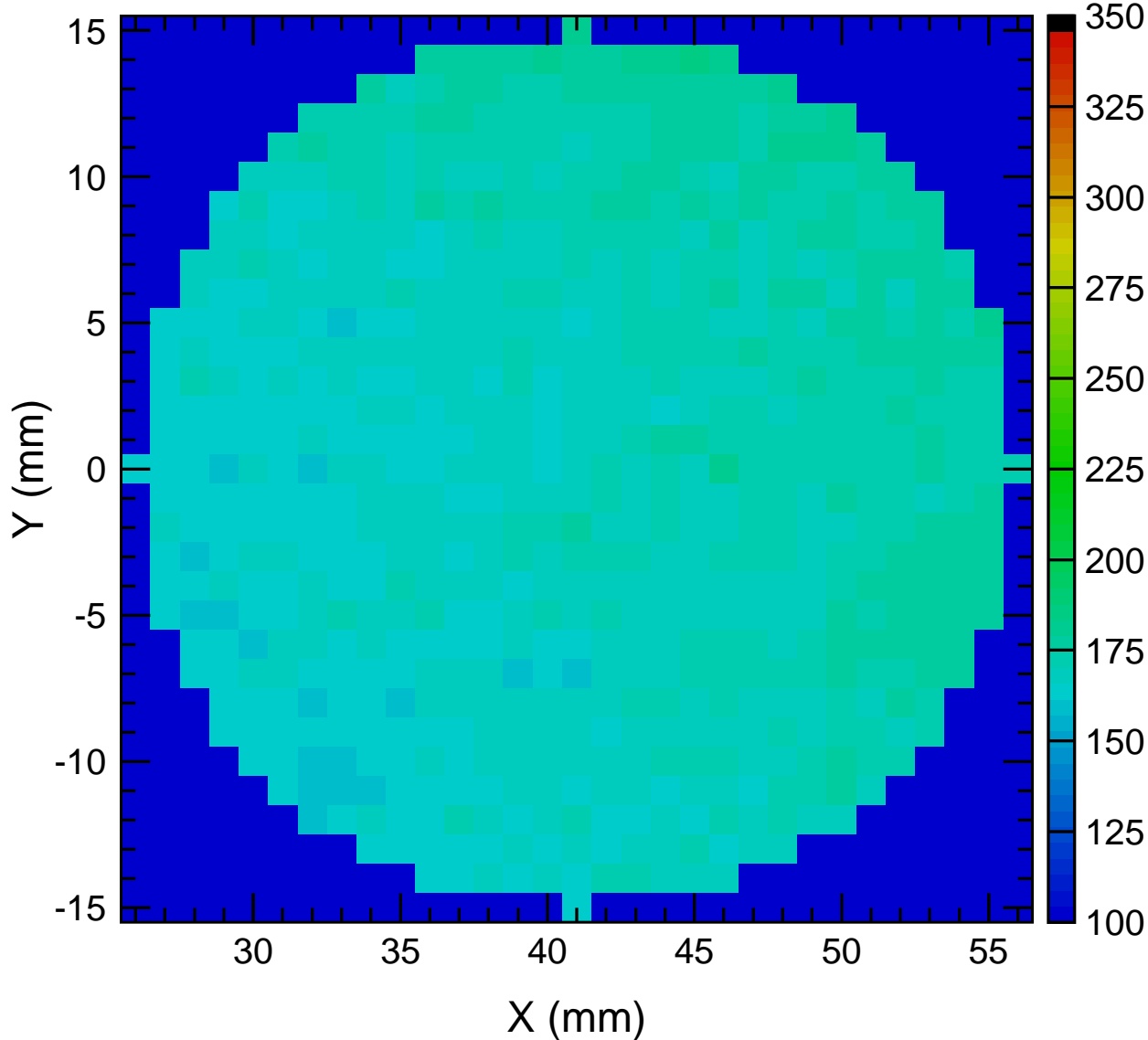
IMCF06 AR Reflection ($\lambda=1064$ nm, $\theta_i=45^\circ$, S pol, $\phi_{\text{beam}}=1$ mm, Arrow@Y-) (ppm)



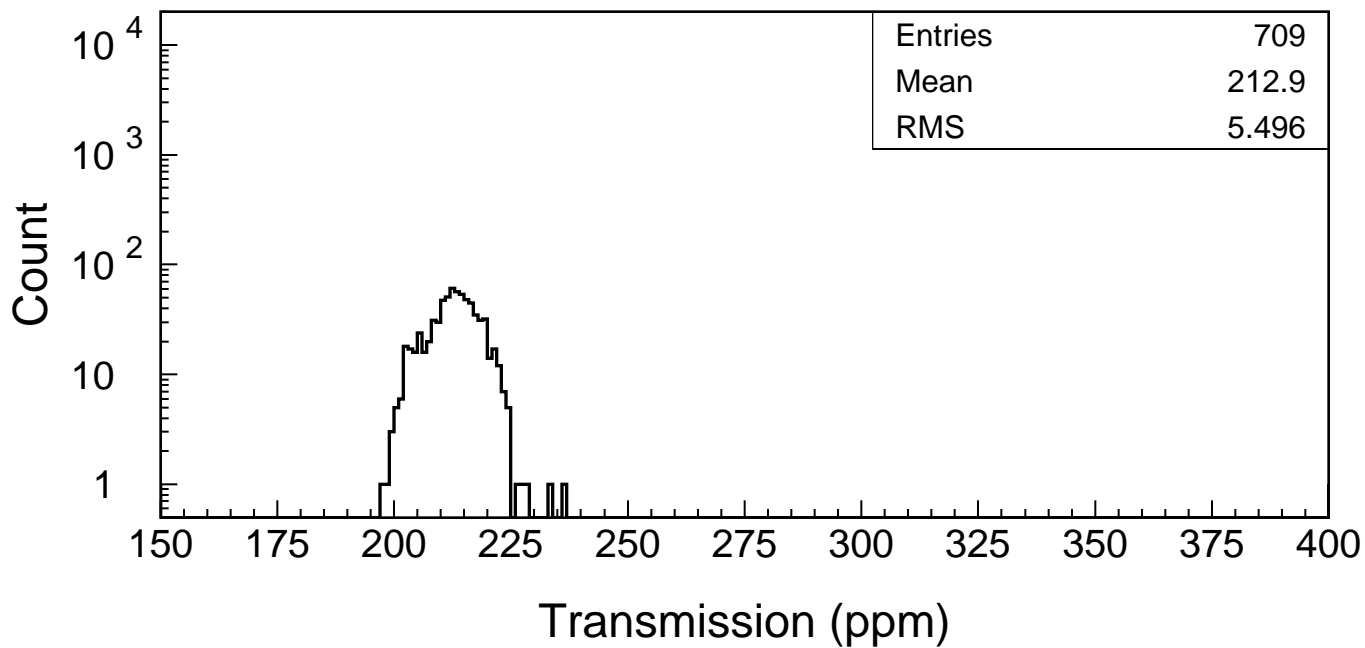
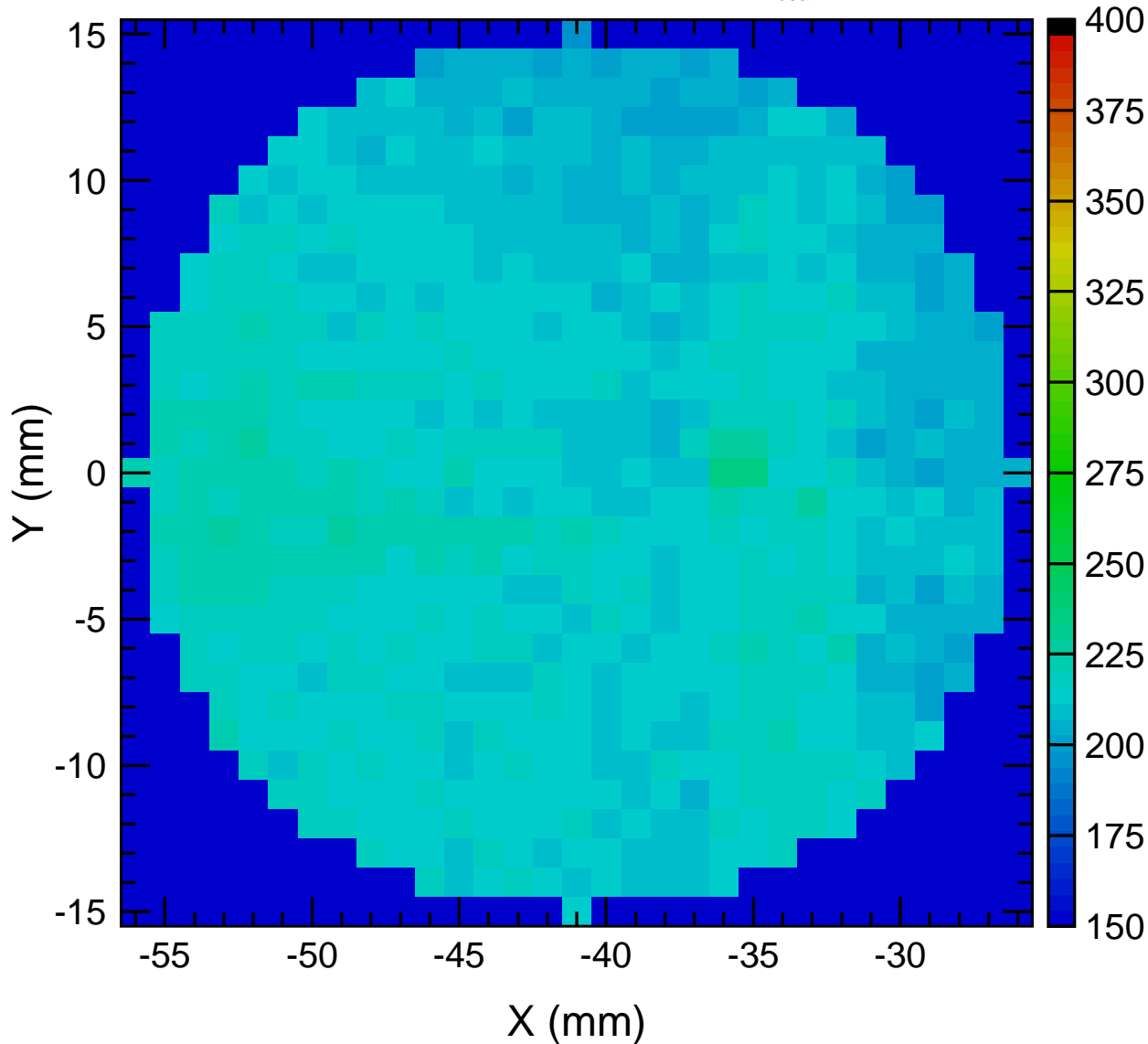
IMCF07 AR Reflection ($\lambda=1064$ nm, $\theta_i=45^\circ$, S pol, $\phi_{\text{beam}}=1$ mm, Arrow@Y-) (ppm)



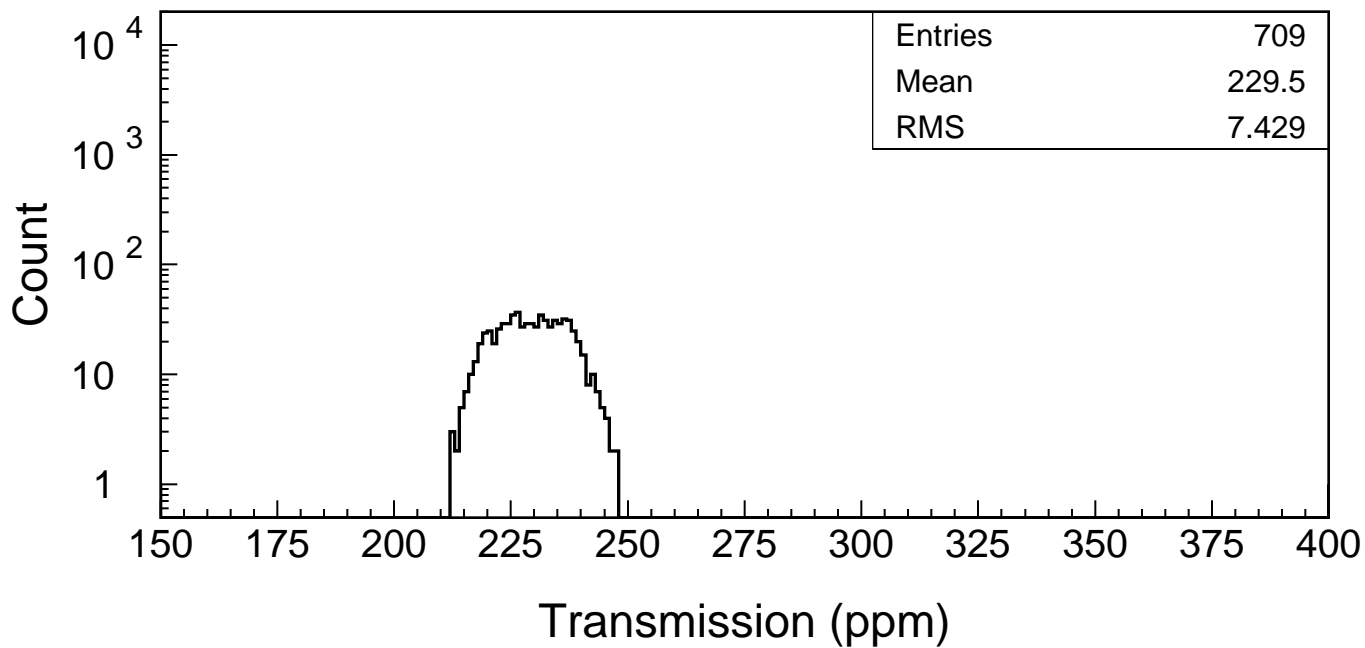
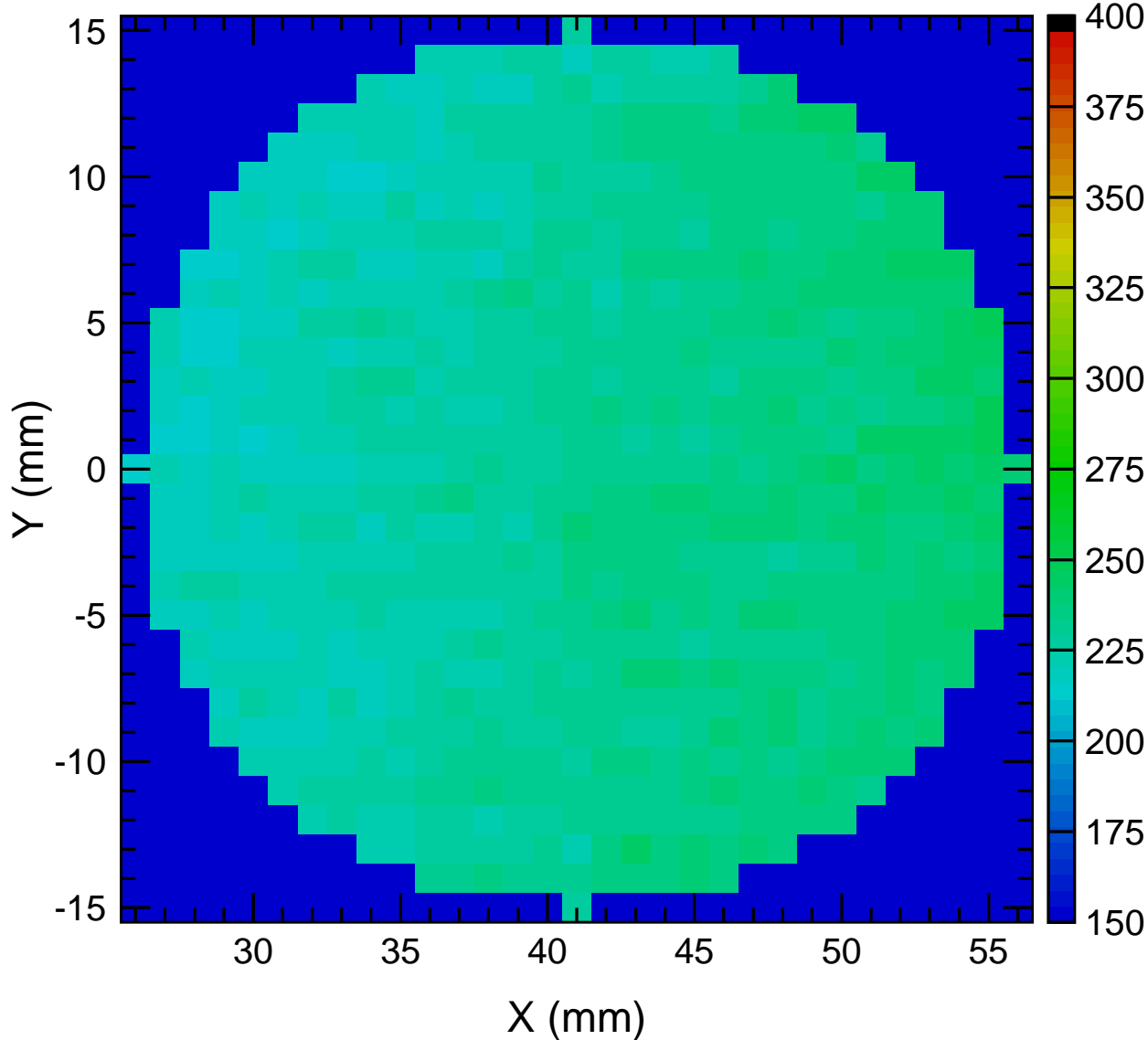
IMCF07 AR Reflection ($\lambda=1064$ nm, $\theta_i=45^\circ$, S pol, $\phi_{\text{beam}}=1$ mm, Arrow@Y-) (ppm)



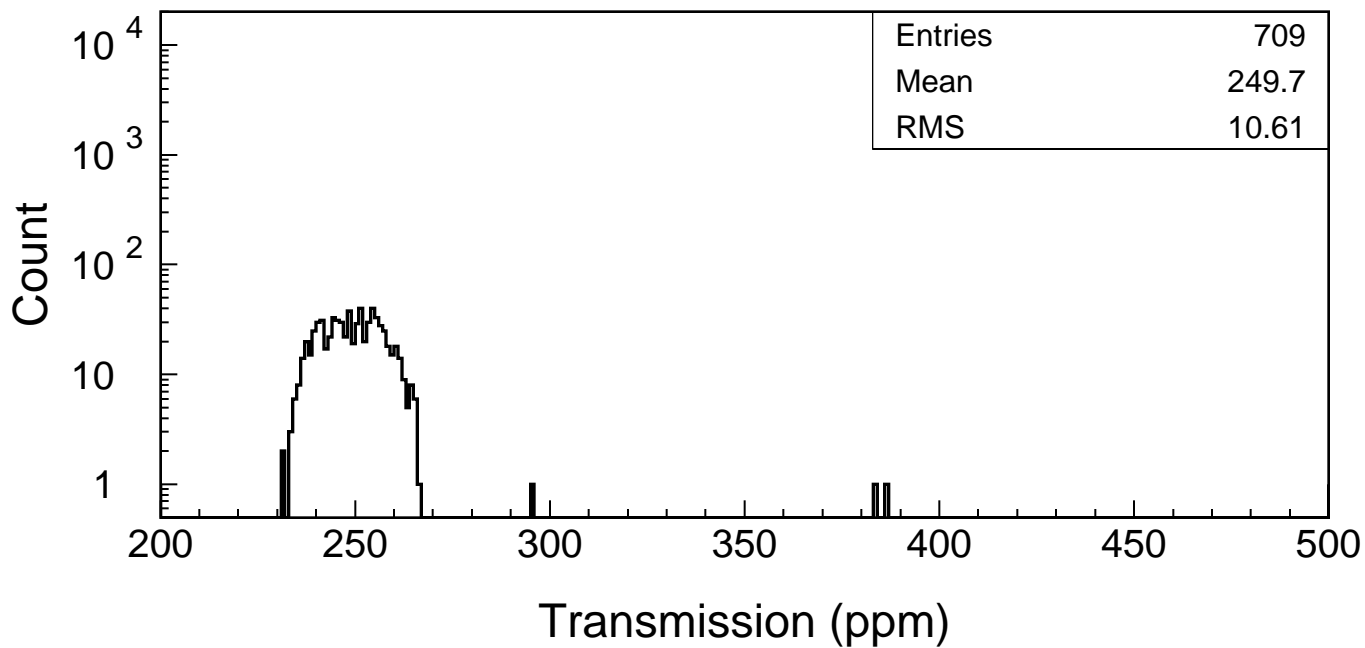
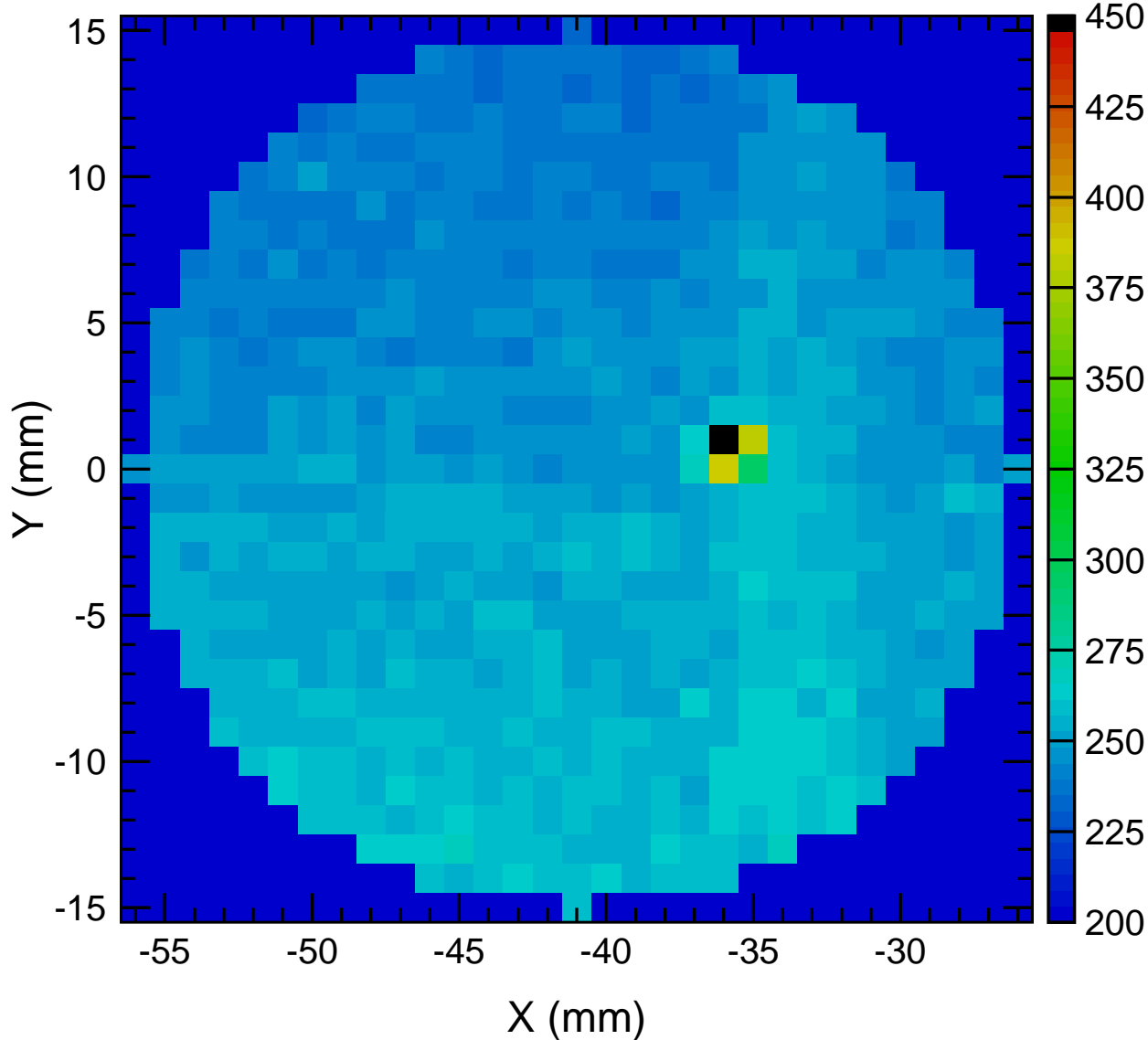
IMCF08 AR Reflection ($\lambda=1064$ nm, $\theta_i=45^\circ$, S pol, $\phi_{\text{beam}}=1$ mm, Arrow@Y-) (ppm)



IMCF08 AR Reflection ($\lambda=1064$ nm, $\theta_i=45^\circ$, S pol, $\phi_{\text{beam}}=1$ mm, Arrow@Y-) (ppm)



IMCF09 AR Reflection ($\lambda=1064$ nm, $\theta_i=45^\circ$, S pol, $\phi_{\text{beam}}=1$ mm, Arrow@Y-) (ppm)



IMCF09 AR Reflection ($\lambda=1064$ nm, $\theta_i=45^\circ$, S pol, $\phi_{\text{beam}}=1\text{mm}$, Arrow@Y-) (ppm)

