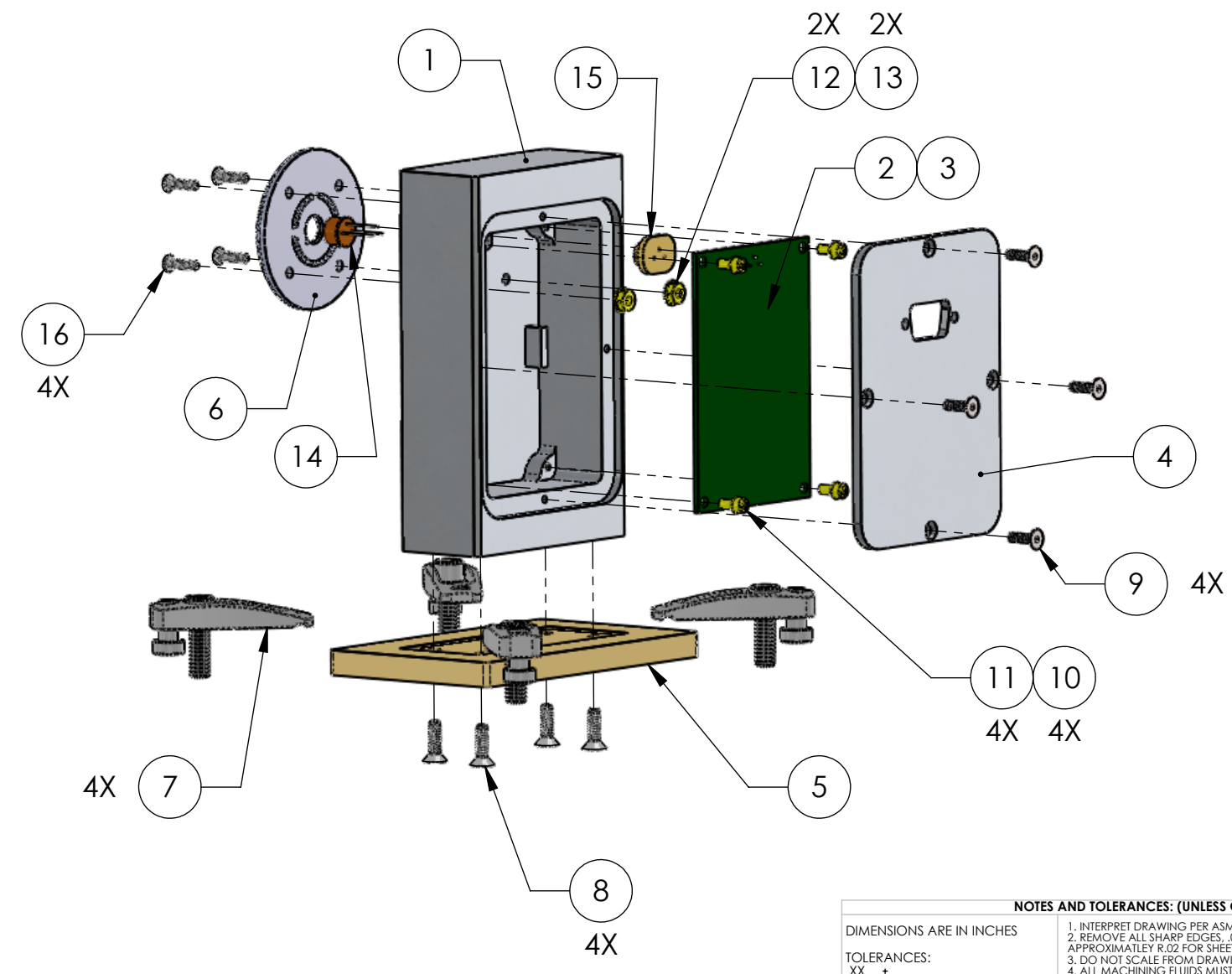
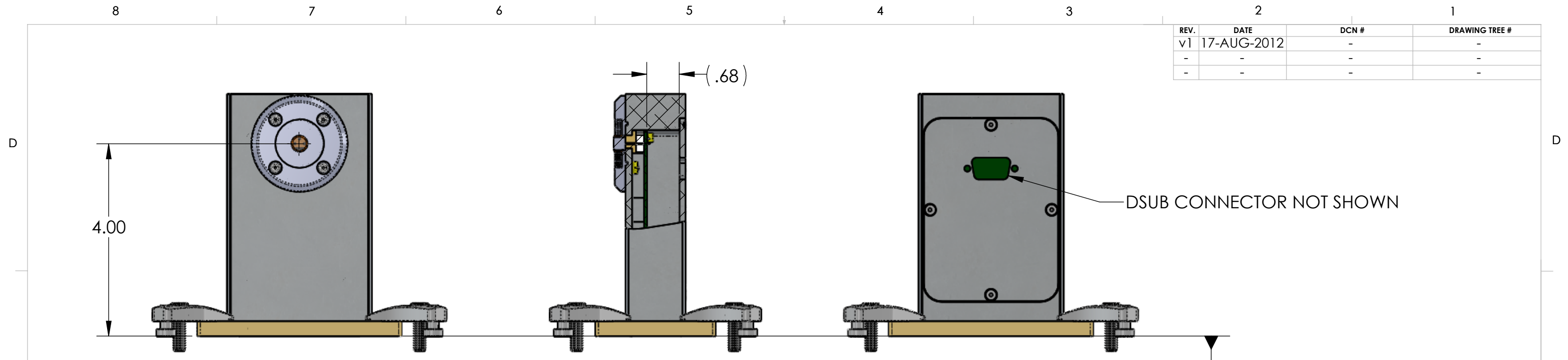


D1201065_αLIGO TCS CO2 LASER PF PREAMP ASSEMBLY, PART PDM REV: X-017, DRAWING PDM REV: X-004

REV.	DATE	DCN #	DRAWING TREE #
v1	17-AUG-2012	-	-
-	-	-	-
-	-	-	-



ITEM NO.	PART NUMBER	DESCRIPTION	MATERIAL	REQ	SPARE	TOTAL
16		BHSCS, #4-40 X .4375 LONG	SSTL	4	2	6
15	D1201169	PIN INSULATOR, αLIGO TCS CO2P PD	PEEK	1		1
14	TO-39	NIR PHOTODIODE	MULTI	1		1
13	-	WASHER, FLAT, #4 (NAS 1149-C4L OR EQUIVALENT)	300 SSTL	2	2	4
12	-	HEX NUT, #4-40	SSTL	2	2	4
11	-	SHCS, #4-40 UNC-2A X 0.25 LONG	SSTL	4	2	6
10	-	WASHER, FLAT, #4 (NAS 620-C4L OR EQUIVALENT)	SSTL	4	2	6
9		FHSCS, #4-40 X .4375 LONG	SSTL	4	2	6
8		FHSCS, #6-32 X .5 LONG	SSTL	4	2	6
7	BC-5	BASE CLAMP WITH 1/4-20 SHCS	N/A	4		4
6	D1101178	LSC IN-AIR RFPD ENCLOSURE - PHOTO HOOD -v6	6061 Alloy	1		1
5	D1201142	BASE, αLIGO TCS CO2P PD PREAMP ASSY	PEEK	1		1
4	D1201141	COVER, αLIGO TCS CO2P PD PREAMP ASSY	6061 Alloy	1		1
3	S8058	LASER DIODE SOCKET	MULTI	1		1
2	D1201111	αLIGO TCS CO2 LASER PD PREAMP BOARD	FR-4	1		1
1	D1201133	HOUSING, αLIGO TCS CO2 LASER PD PREAMP	6061 Alloy	1		1

PARTS LIST

NOTES AND TOLERANCES: (UNLESS OTHERWISE SPECIFIED)

DIMENSIONS ARE IN INCHES

TOLERANCES:
 .XX ±
 .XXX ±
 ANGULAR ± °

1. INTERPRET DRAWING PER ASME Y14.5-1994.
 2. REMOVE ALL SHARP EDGES, .005-.015, FOR MACHINED PARTS. ROUND ALL EDGES APPROXIMATELY R.02 FOR SHEET METAL PARTS.
 3. DO NOT SCALE FROM DRAWING.
 4. ALL MACHINING FLUIDS MUST BE FULLY SYNTHETIC, FULLY WATER SOLUBLE AND FREE OF SULFUR, SILICONE, AND CHLORINE.

MATERIAL: N/A
 FINISH: N/A μinch

CALIFORNIA INSTITUTE OF TECHNOLOGY MASSACHUSETTS INSTITUTE OF TECHNOLOGY		PART NAME αLIGO TCS CO2 LASER PD PREAMP ASSEMBLY	
SYSTEM ADVANCED LIGO	SUB-SYSTEM AOS	DESIGNER M. JACOBSON 08-AUG-12 DRAFTER M. JACOBSON 15-AUG-2012 CHECKER B. ABBOTT 16-AUG-2012 APPROVAL HEPTONSTALL 17-AUG-2012	SIZE DWG. NO. B D1201065 SCALE: 1:4 PROJECTION:
		REV. v1	SHEET 1 OF 1