

D1201071 AdvLIGO BSC5-L1 ISI Table, Payload & Suspended Mass Assembly, PART PDM REV: X-008, DRAWING PDM REV: X-002

NOTES CONTINUED:

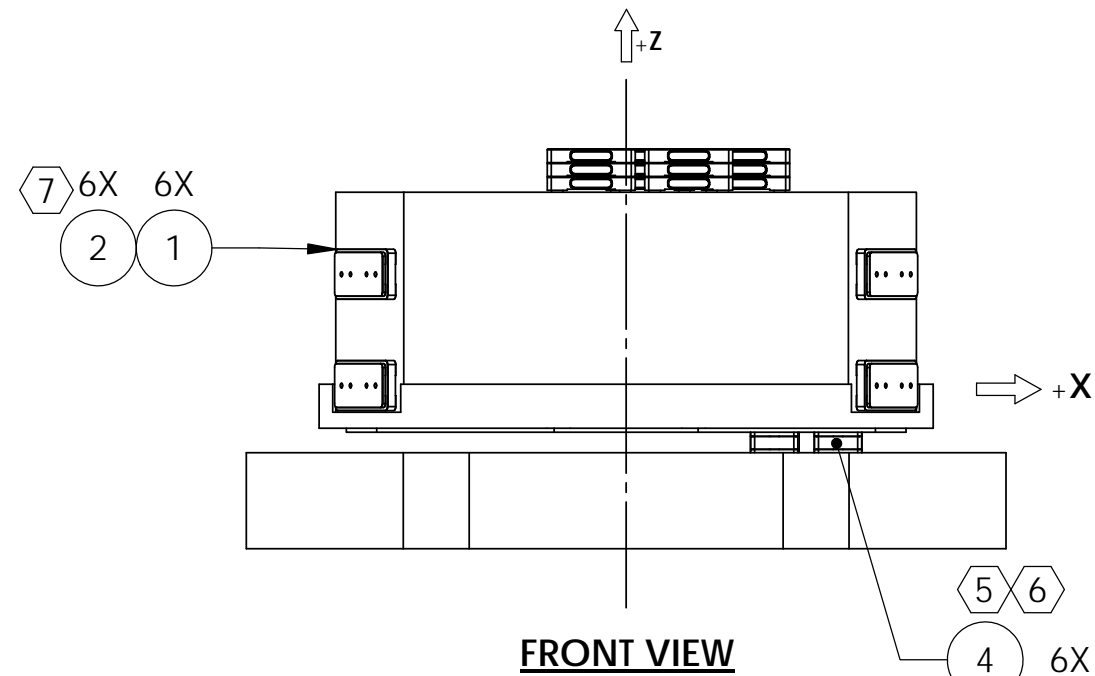
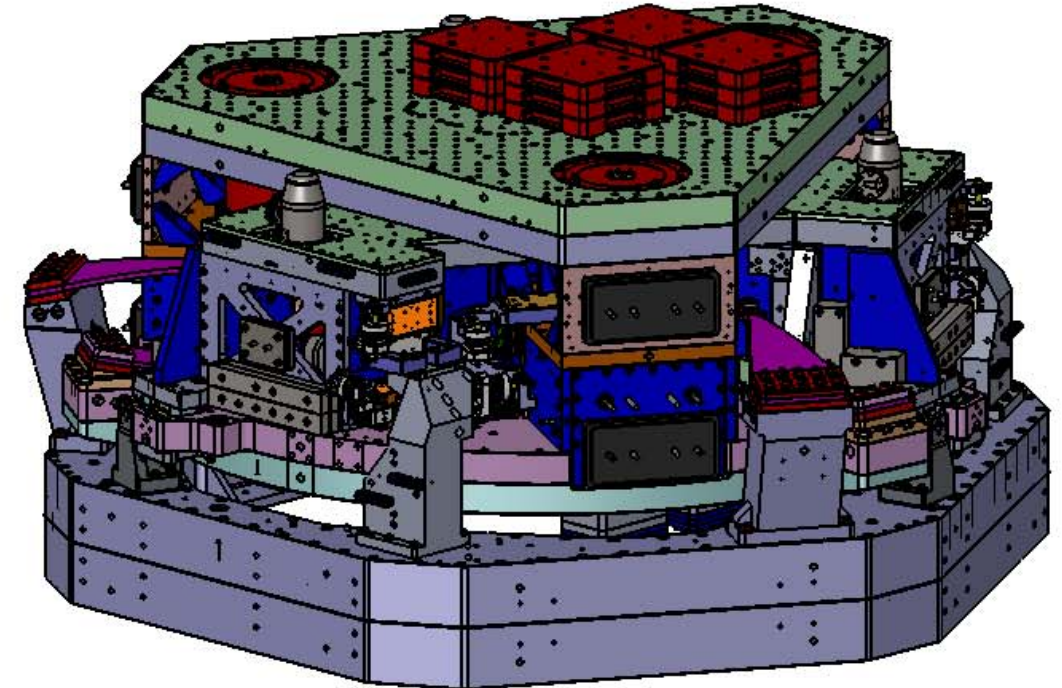
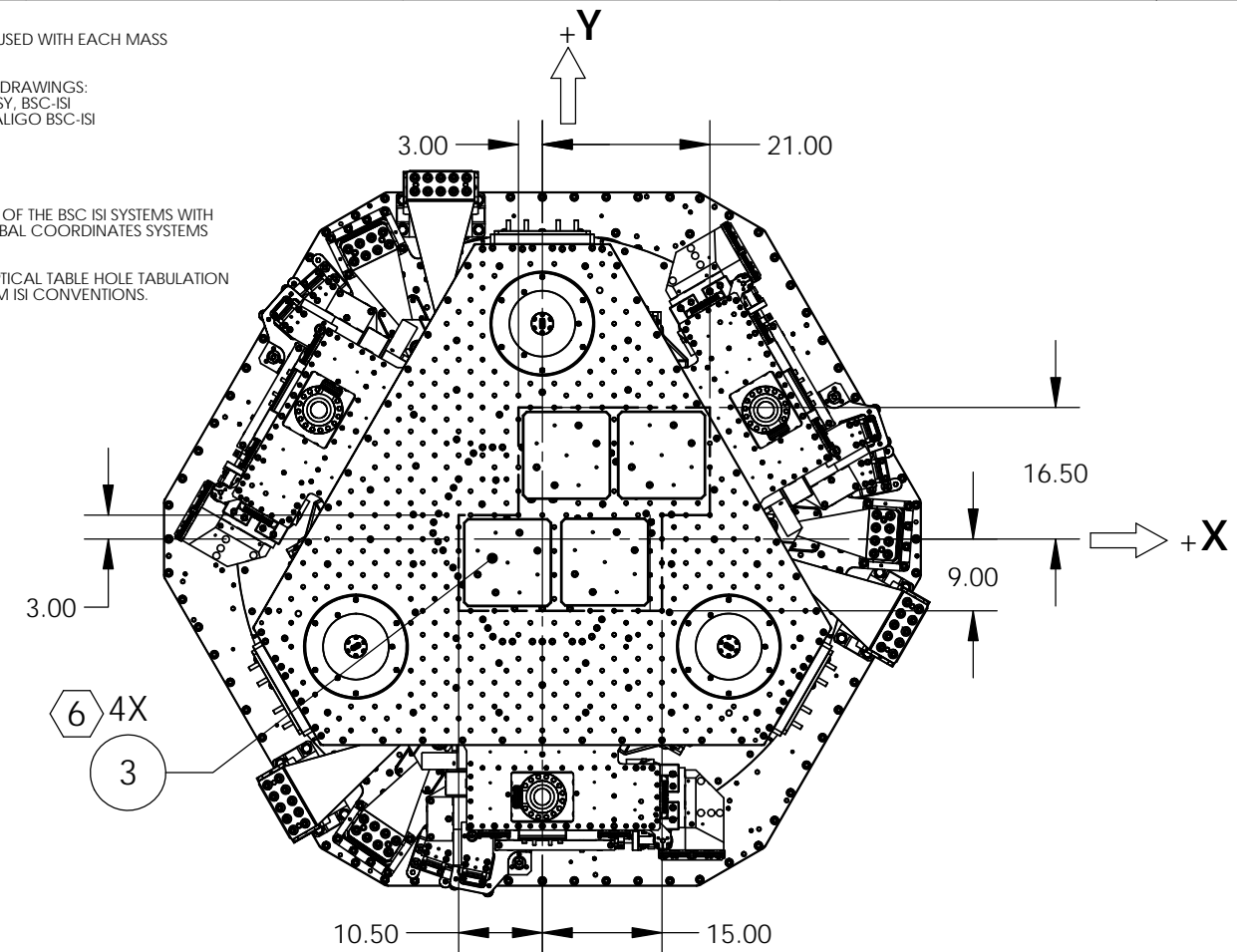
⑤ A MINIMUM OF 3X FASTENERS SHOULD BE USED WITH EACH MASS ASSEMBLY D1003161

⑥ FOR HARDWARE REQUIREMENTS REFER TO DRAWINGS:
 - D1003161-v1 TRIM MASS & DAMPING ASSY, BSC-ISI
 - D1003143-v1 BALLAST MASS ASSEMBLY, ALIGO BSC-ISI

⑦ HARDWARE REQUIRED ON ITEMS 1 & 2:
 - HEX, NUT, D0900504
 - WASHER, UCC-WFV-50

⑧ FOR DEFINITIONS ABOUT THE ORIENTATION OF THE BSC ISI SYSTEMS WITH RESPECT TO THEIR VACCUUM AND IFO GLOBAL COORDINATES SYSTEMS SEE THE FOLLOWING DOCUMENTS.
 D1101271 ALIGO, AOS, BSC CHAMBER, OPTICAL TABLE HOLE TABULATION
 G1000125 ADVANCED LIGO BSC AND HAM ISI CONVENTIONS.

REV.	DATE	DCN #	DRAWING TREE #
v1	31 JUL 2012	-	-
v2	05 JUN 2013	-	-
-	-	-	-



ITEM NO.	PART NUMBER	DESCRIPTION	Assembly DWG/ QTY.
4	D1003161-22.6	TRIM MASS & DAMPING ASSY, aLIGO BSC-ISI (22.6Kg)	6
3	D1003143	BALLAST MASS ASSEMBLY, aLIGO BSC ISI	4
2	D071200	.440 (Type 04)	6
1	D071200	1.190 Coarse (Type 06)	6

NOTES AND TOLERANCES: (UNLESS OTHERWISE SPECIFIED)

DIMENSIONS ARE IN
 TOLERANCES:
 .XX ±
 .XXX ±
 ANGULAR ± °

1. INTERPRET DRAWING PER ASME Y14.5-1994.
 2. REMOVE ALL SHARP EDGES, .005-.015, FOR MACHINED PARTS. ROUND ALL EDGES APPROXIMATELY R.02 FOR SHEET METAL PARTS.
 3. DO NOT SCALE FROM DRAWINGS.
 4. ALL MACHINING FLUIDS MUST BE FULLY SYNTHETIC, FULLY WATER SOLUBLE AND FREE OF SULFUR, SILICONE, AND CHLORINE.

MATERIAL: N/A FINISH: N/A μinch

PARTS LIST

LIGO CALIFORNIA INSTITUTE OF TECHNOLOGY MASSACHUSETTS INSTITUTE OF TECHNOLOGY

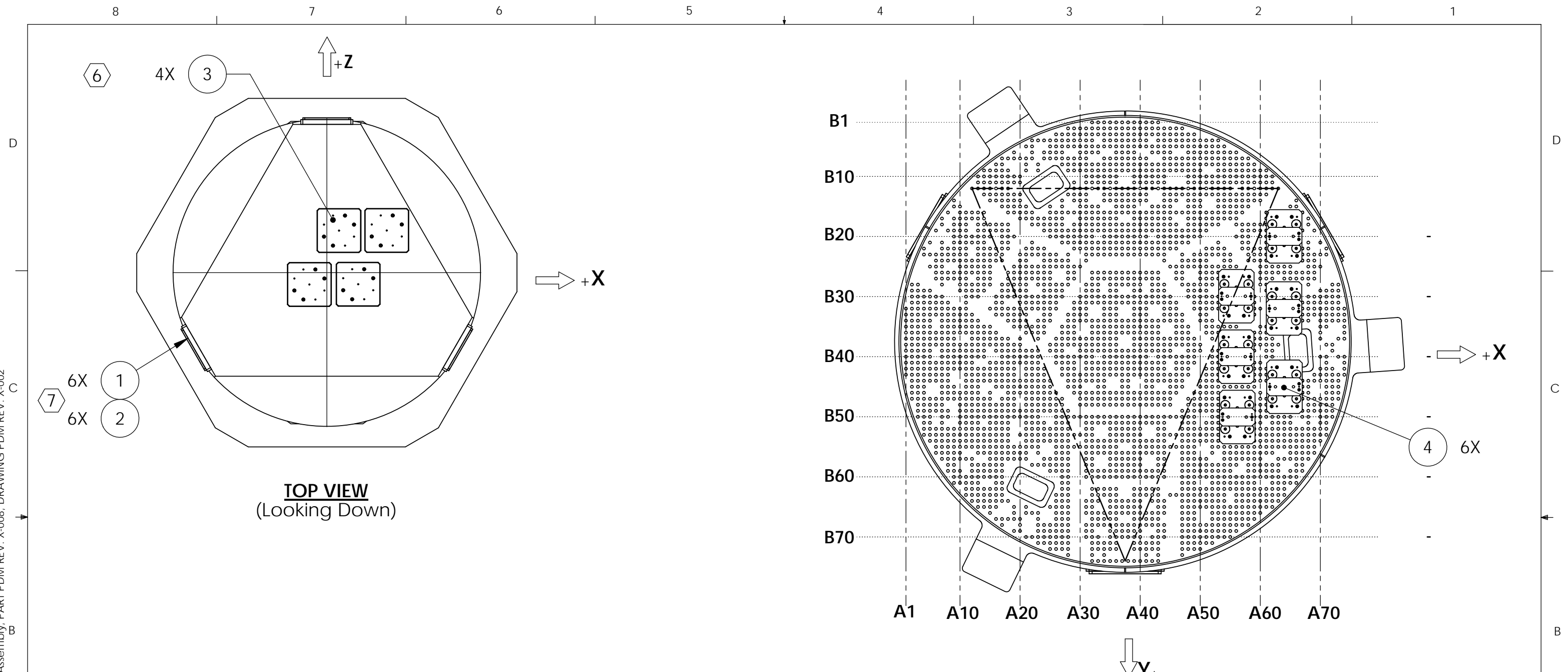
SYSTEM: ADVANCED LIGO SUB-SYSTEM: SEI

PART NAME: AdvLIGO BSC5-L1 ISI Table, Balance, Ballast & Trim Mass Assy

DESIGNER	E.SANCHEZ	31 JUL 2012	SIZE	DWG. NO.	REV.
DRAFTER	SEE DCC	SEE DCC	B	D1201071	v2
CHECKER	SEE DCC	SEE DCC	SCALE: 1:32	PROJECTION:	SHEET 1 OF 3
APPROVAL	SEE DCC	SEE DCC			

NEXT ASSY: D0900506

D1201071 AdvLIGO BSC5-L1 ISI Table, Payload & Suspended Mass Assembly, PART PDM REV: X-008, DRAWING PDM REV: X-002



TOP VIEW
(Looking Down)

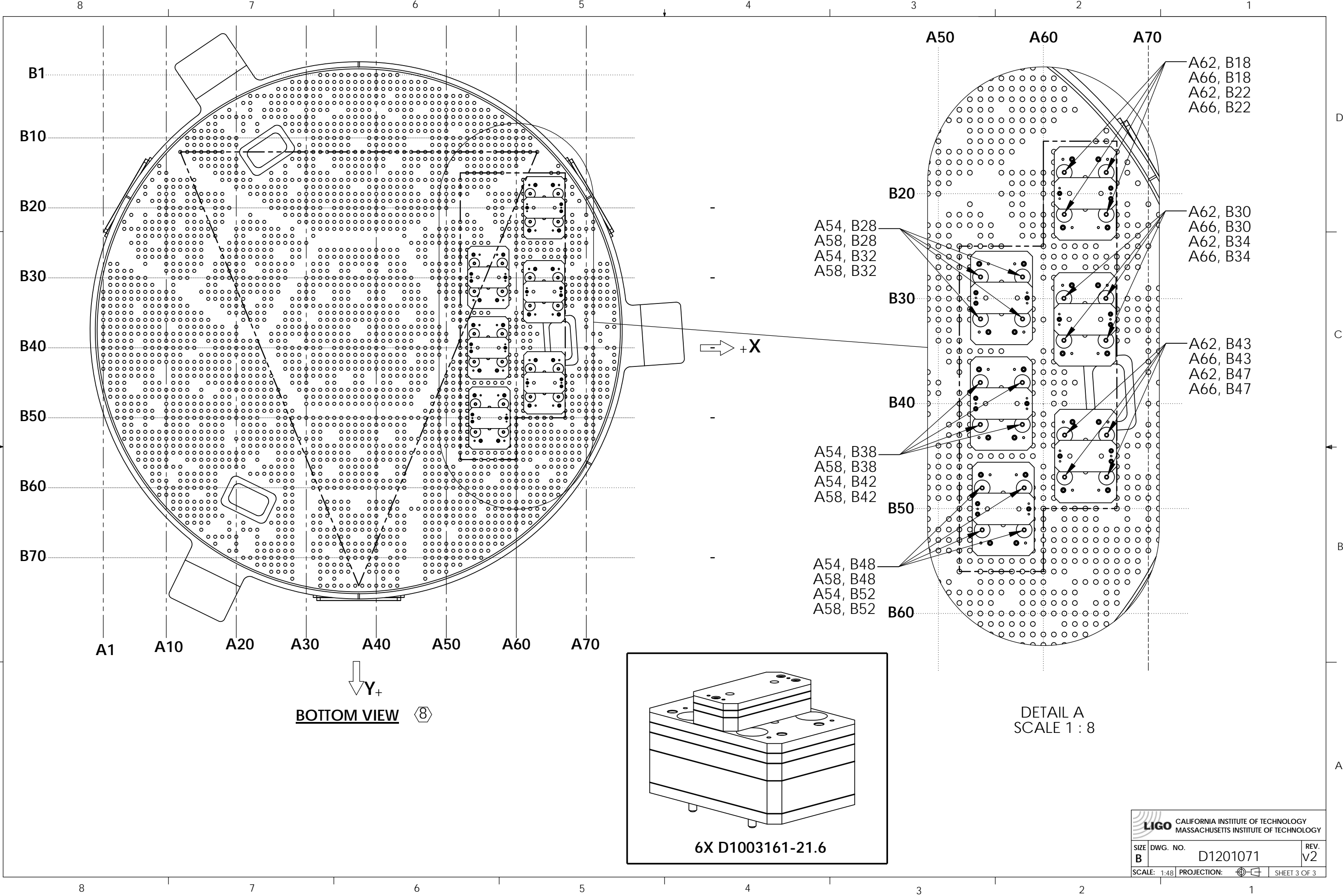
BOTTOM VIEW Ⓢ

D1201071 - BSC5-L1 COUNTERBALANCE MASS B.O.M.						
ITEM	PART NUMBER	DESCRIPTION	QTY.	TOTAL RQD	WEIGHT	
1	D071200-06	1.190 Coarse (Type 06)	6	6	73.99	
2	D071200-04	.440 (Type 04)	6	6	21.51	
				OUTER WALL MASSES	SUB-TOTAL	95.50
3	D1003143	BALLAST MASS ASSEMBLY, aLIGO BSC ISI	4			
3.1	D1003136	BALLAST MASS, aLIGO BSC-ISI	3	12		
3.2	D1003144	BALLAST MASS DAMP PAD, aLIGO BSC-ISI	4	16		
				KEEL MASSES	SUB-TOTAL	270.43
4	D1003161-21.6	TRIM MASS AND DAMPING ASSY, aLIGO BSC-ISI	6			
4.1	D1003163	TRIM MASS 10 KG, aLIGO BSC-ISI	1	6		
4.2	D1003164	TRIM MASS 5 KG, aLIGO BSC-ISI	1	6		
4.3	D1003166	TRIM MASS 1 KG, aLIGO BSC-ISI	2	12		
4.4	D1003167	TRIM MASS .5 KG, aLIGO BSC ISI	1	6		
4.5	D1003168	TRIM MASS .25 KG, aLIGO BSC ISI	2	12		
4.6	D1003123	TRIM MASS ISOLATION MOUNT PLATE aLIGO BSC-ISI	1	6		
				PAYLOAD MASSES	SUB-TOTAL	129.35
				TOTAL	495.28	

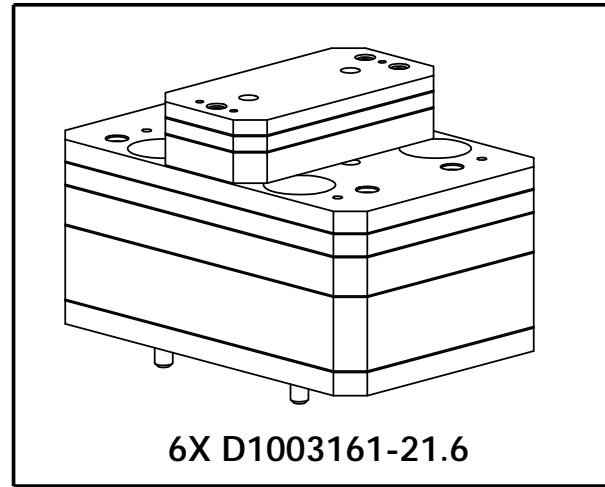
CALIFORNIA INSTITUTE OF TECHNOLOGY
 MASSACHUSETTS INSTITUTE OF TECHNOLOGY

SIZE	DWG. NO.	REV.
B	D1201071	v2
SCALE: 1:48	PROJECTION:	SHEET 2 OF 3

D1201071 AdvLIGO BSC5-L1 ISI Table, Payload & Suspended Mass Assembly, PART PDM REV: X-008, DRAWING PDM REV: X-002



↓ Y+
BOTTOM VIEW Ⓢ



6X D1003161-21.6

DETAIL A
SCALE 1 : 8

LIGO CALIFORNIA INSTITUTE OF TECHNOLOGY MASSACHUSETTS INSTITUTE OF TECHNOLOGY	
SIZE B	DWG. NO. D1201071
SCALE: 1:48	PROJECTION: SHEET 3 OF 3
	REV. v2

D1201071 AdvLIGO BSC5-L1 ISI Table, Payload & Suspended Mass Assembly, PART PDM REV: X-008, DRAWING PDM REV: X-002