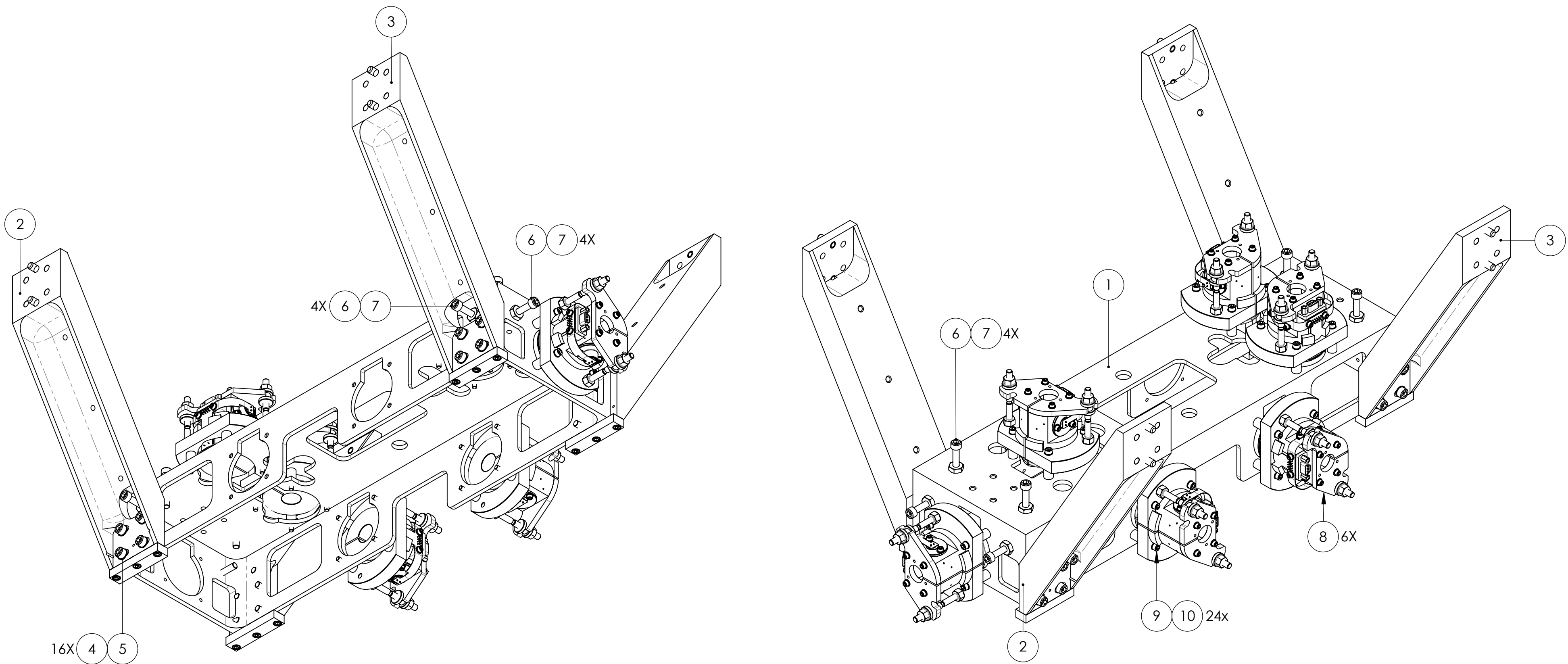


REV.	DATE	DCN #	DRAWING TREE #
v1	04 SEP 2012	E1200801	E0900061
-	-	-	-
-	-	-	-



ITEM NO.	PART NUMBER	DESCRIPTION	MATERIAL	REQ	SPARE	TOTAL
10	-	WASHER, FLAT, #4 (NAS 620-C4L OR EQUIVALENT)	300 SSSL	24	6	30
9	-	SCREW, SOCKET HEAD CAP, #4-40 UNC-2A X 1 LONG	Ag-PLATED 300 SSSL	24	6	30
8	D060218	BIRMINGHAM OSEM ASSY	--	6	0	6
7	-	HEX NUT, #8-32	300 SSSL	12	3	15
6	-	SCREW, SOCKET HEAD CAP, #8-32 UNC-2A X 1 LONG	Ag-PLATED 300 SSSL	12	3	15
5	-	WASHER, FLAT, #8 (NAS 620-C8L OR EQUIVALENT)	300 SSSL	16	4	20
4	-	SCREW, SOCKET HEAD CAP, #8-32 UNC-2A X 0.5 LONG	Ag-PLATED 300 SSSL	16	4	20
3	D060533-2	MOUNTING BRACKET ASSY, COIL HOLDER, OMC	--	2	0	2
2	D060533-1	MOUNTING BRACKET ASSY, COIL HOLDER, OMC	--	2	0	2
1	D060530	COIL HOLDER, OMC (TABLECLOTH)	304 SSSL	1	0	1
PARTS LIST						

NOTES AND TOLERANCES: (UNLESS OTHERWISE SPECIFIED)



SYSTEM: ADVANCED LIGO SUB-SYSTEM: SUS

NEXT ASSY: OMC OVERALL ASSY

PART NAME
COIL HOLDER ASSY, OMC

DESIGNER	D. BRIDGES	04 SEP 2012	SIZE	DWG. NO.	REV.
DRAFTER	D. BRIDGES	13 SEP 2012	c	D1201213	v1
CHECKER	B. MOORE	14 SEP 2012	SCALE: 1:2	PROJECTION:	SHEET 1 OF 1
APPROVAL					

MATERIAL: N/A FINISH: N/A μinch