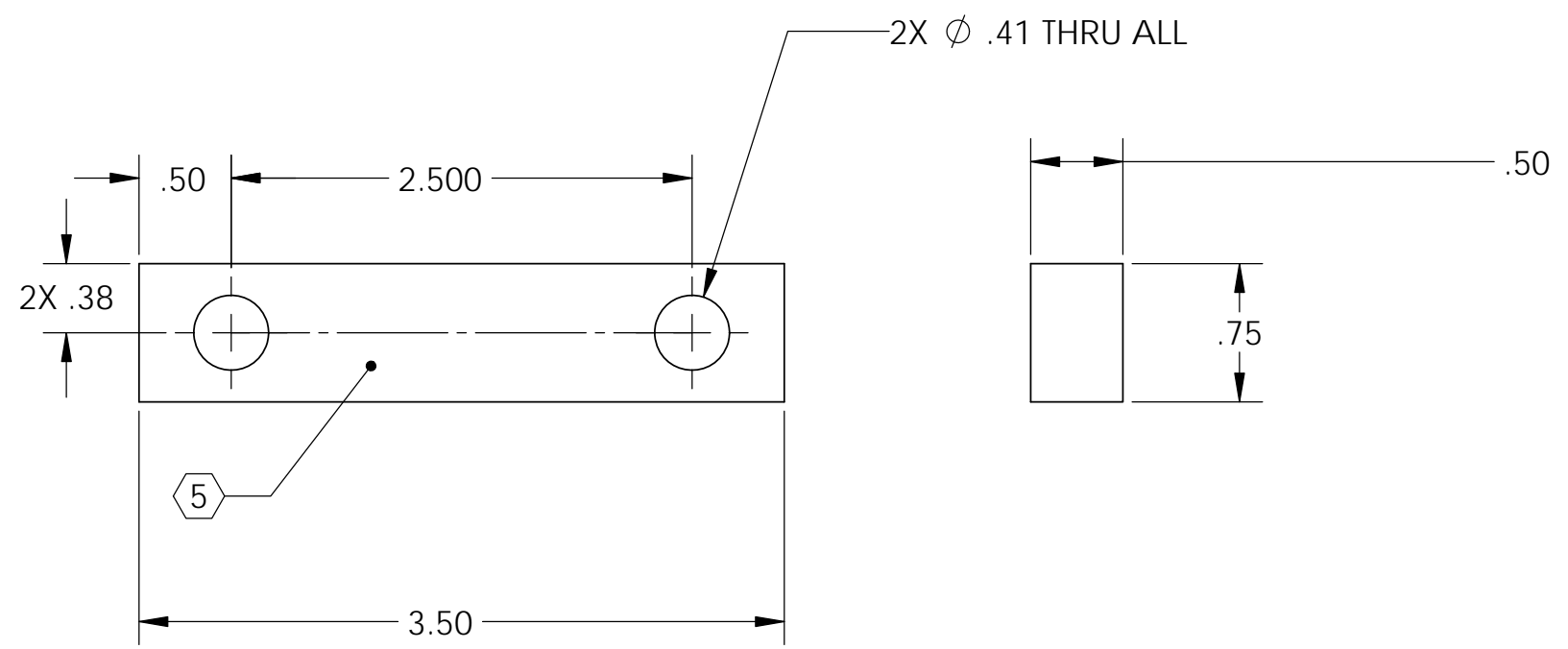


D1201241 Base plate reinforcing plate, Dual suspended seismometer short osc platform, PART PDM REV: X-000, DRAWING PDM REV:

8 7 6 5 4 3 2 1

NOTES CONTINUED:  
 ⑤ SCRIBE, ENGRAVE (A VIBRATORY TOOL MAY BE USED), LASER MARK OR MECHANICALLY STAMP (NO INKS OR DYES) DRAWING PART NUMBER, REVISION (AND VARIANT OR "TYPE" IF APPLICABLE) ON NOTED SURFACE OF PART FOLLOWED ON THE NEXT LINE WITH A THREE DIGIT SERIAL NUMBER. SERIAL NUMBERS START AT 001 FOR THE FIRST ARTICLE AND PROCEED CONSECUTIVELY. USE MINIMUM 0.12" HIGH CHARACTERS, UNLESS THE SIZE OF THE PART DICTATES SMALLER CHARACTERS. EXAMPLE: DXXXXXX-VY, TYPE-XX, S/N XXX

REV.	DATE	DCN #	DRAWING TREE #
v1	28 SEP 2012	E1200841	-
-	-	-	-
-	-	-	-



NOTES AND TOLERANCES: (UNLESS OTHERWISE SPECIFIED)				LIGO CALIFORNIA INSTITUTE OF TECHNOLOGY MASSACHUSETTS INSTITUTE OF TECHNOLOGY		PART NAME					
DIMENSIONS ARE IN INCHES		1. INTERPRET DRAWING PER ASME Y14.5-1994. 2. REMOVE ALL SHARP EDGES, R.02 MIN. 3. DO NOT SCALE FROM DRAWING. 4. APPROXIMATE WEIGHT = 0.12 LB.		ADVANCED LIGO		SUB-SYSTEM		SEI		Base plate reinforcing plate	
TOLERANCES: .XX ± 0.015 .XXX ± 0.005		MATERIAL		FINISH		NEXT ASSY		DESIGNER		P. KNOEHE 13 SEP 2012	
ANGULAR ± 0.5°		6061-T6 Al		63 μinch		D1201253		DRAFTER		P. KNOEHE 13 SEP 2012	
								CHECKER		MATICARD 28 SEP 2012	
								APPROVAL		MATICARD 28 SEP 2012	
								SCALE: 1:1		PROJECTION:	
								DWG. NO.		REV.	
								B		D1201241	
										v1	
										SHEET 1 OF 1	

8 7 6 5 4 3 2 1