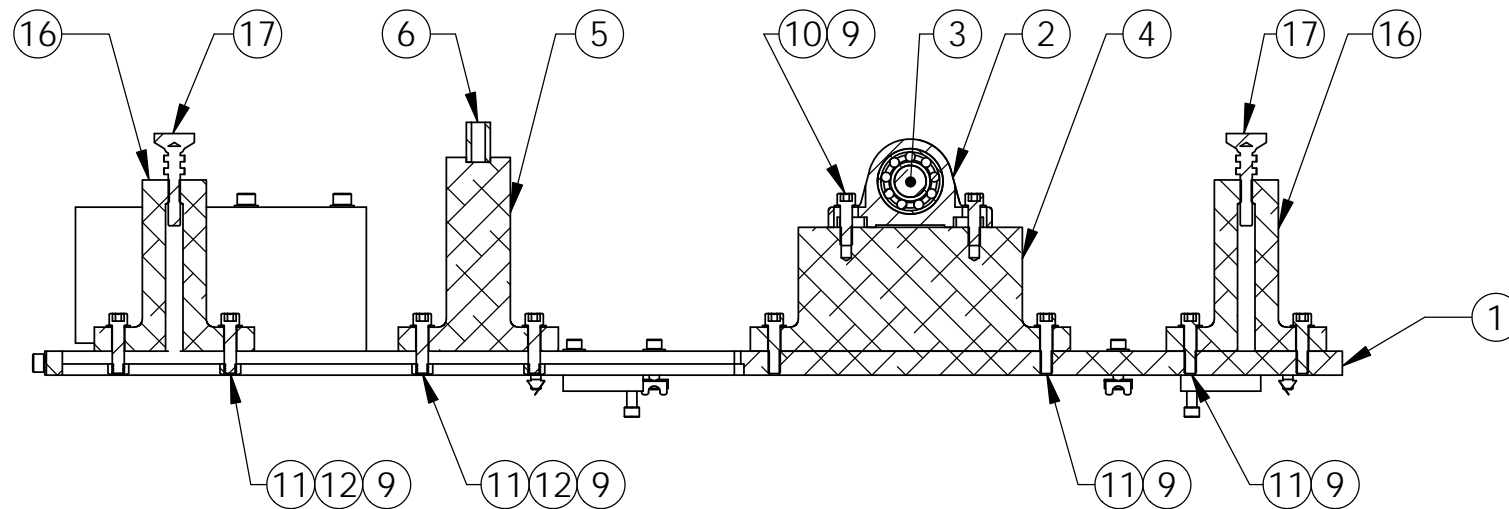
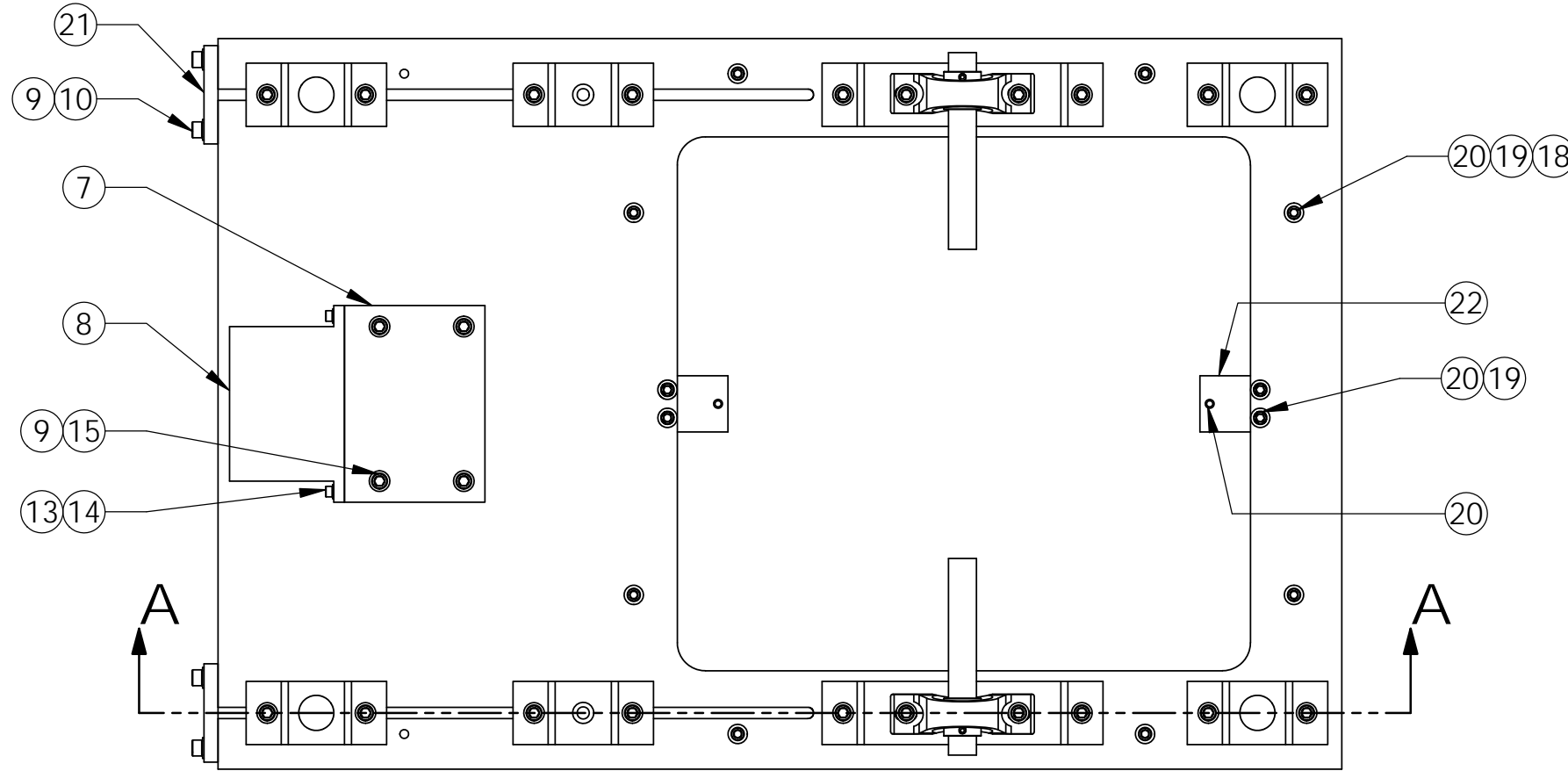


D1201253 Base, Rotate dual suspended seismometer short osc platform, PART PDM REV: X-000, DRAWING PDM REV:

REV.	DATE	DCN #	DRAWING TREE #
v1	28 SEP 2012	E1200841	-
-	-	-	-
-	-	-	-

### ROTATION CONFIGURATION



SECTION A-A

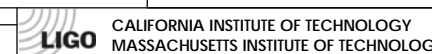
SCALE 1 : 6

ITEM NO.	PART NUMBER	DESCRIPTION	MATERIAL	REQ
22	D1201302	Bumper plate	6061-T6 Al	2
21	D1201241	Base plate reinforcing plate	6061-T6 Al	2
20	McMaster 92185A585	SHC Screw 5/16"-18 Thread, 1-1/4" lg.		14
19	McMaster 90126A030	Flat Washer 5/16" Screw Size, 11/16" OD, .05"-.08" Thick	Alloy Steel	12
18	McMaster 47065T229	Inch T-Slotted Framing System Drop-in Fastener W/Double-Spring Tab, for 1-1/2"	Aluminum	8
17	JWWinco 6T2SNT	Snap-Lock Non-Skid Leveling Mount 3/8"-16 x 2" lg.	Stainless Steel	4
16	D1003096	Stop block	6061-T6 Al	4
15	McMaster 91251A651	SHC Screw 3/8"-16 x 5-1/4" lg.	Alloy Steel	4
14	McMaster 90128A246	SHC Screw 1/4"-20 x 7/8" lg.	Alloy Steel	4
13	McMaster 91090A105	Flat Washer 1/4" Screw Size, 1/2" OD, .04"-.06" Thick	Alloy Steel	4
12	McMaster 95462A031	Hex Nut 3/8"-16 Thread Size, 9/16" Width, 21/64" Height	Alloy Steel	8
11	McMaster 90128A628	SHC Screw 3/8"-16 x 1-1/2" lg.	Alloy Steel	16
10	McMaster 90128A627	SHC Screw 3/8"-16 x 1-1/4" lg.	Alloy Steel	8
9	McMaster 94744A265	Flat Washer 3/8" Screw Size, 47/64" Narrow OD, .05"-.12" Thk	Alloy Steel	28
8	MEPI	Field assembly	Material <not specified>	1
7	D1003070	Actuator block	6061-T6 Al	1
6	McMaster 9623K21	Oval Wire Die Spring 3/4" Hole, 3/8" Rod, 1" Length, 5/32" X 3/32" Wire	Alloy Steel	2
5	D1003069	Spring block	6061-T6 Al	2
4	D1003068	Pillow block	6061-T6 Al	2
3	D1201240	Split shaft	AISI 304	2
2	McMaster 2773T200	High-Speed Mounted Stl Ball Bearing Base Mount, for 1" Shaft Diameter	Cast Iron	2
1	D1201265	Base plate	6061-T6 Al	1

NOTES AND TOLERANCES: (UNLESS OTHERWISE SPECIFIED)

DIMENSIONS ARE IN INCHES  
 TOLERANCES:  
 .XX ± N/A  
 .XXX ± N/A  
 ANGULAR ± N/A°

1. INTERPRET DRAWING PER ASME Y14.5-1994.  
 2. REMOVE ALL SHARP EDGES, R.02 MIN.  
 3. DO NOT SCALE FROM DRAWING.  
 4. ADAPTED FROM D1003063  
 5. APPROXIMATE WEIGHT = 105 LB.

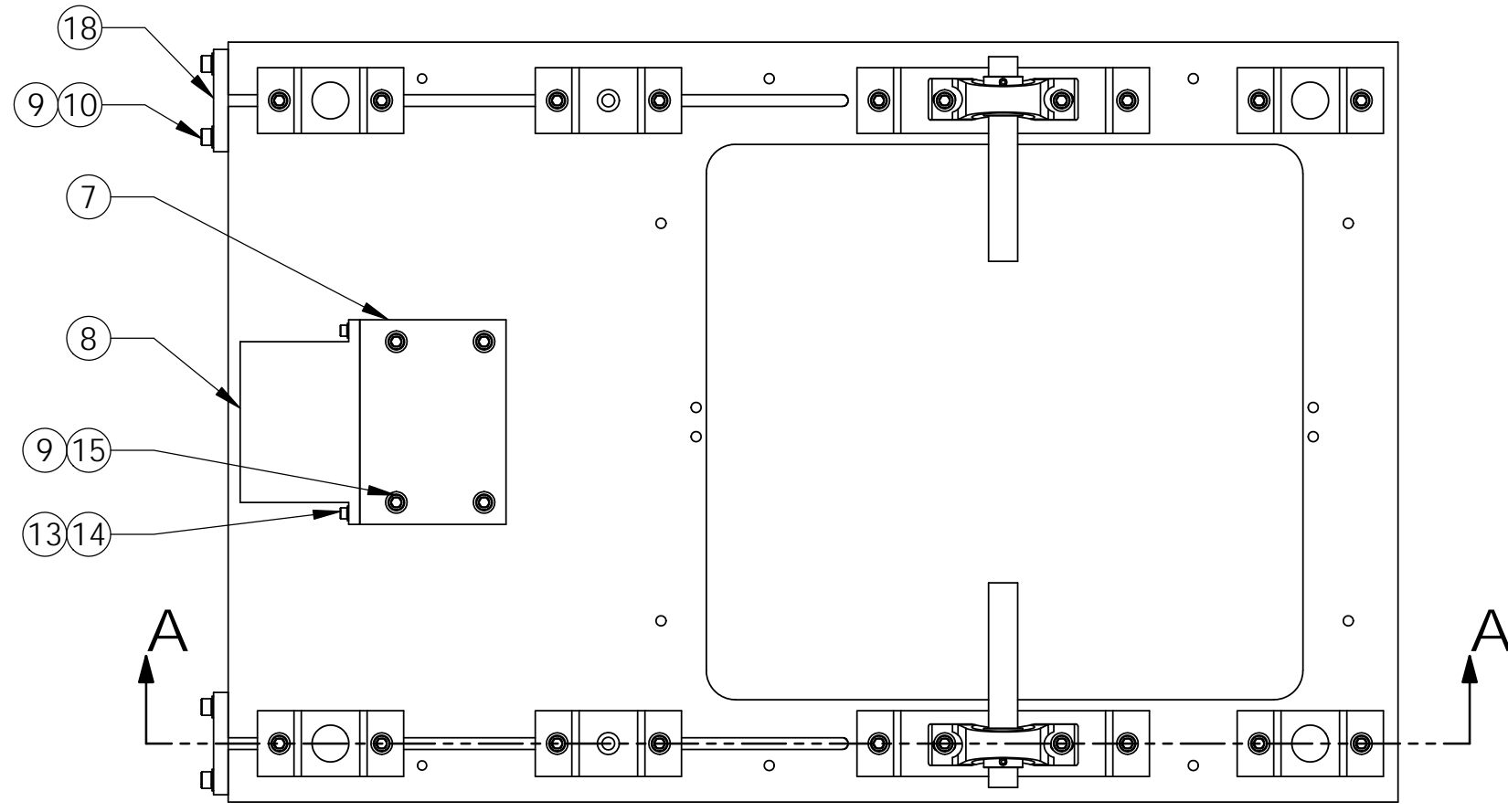


SYSTEM: ADVANCED LIGO SUB-SYSTEM: SEI  
 NEXT ASSY: D1201257 / D1201269

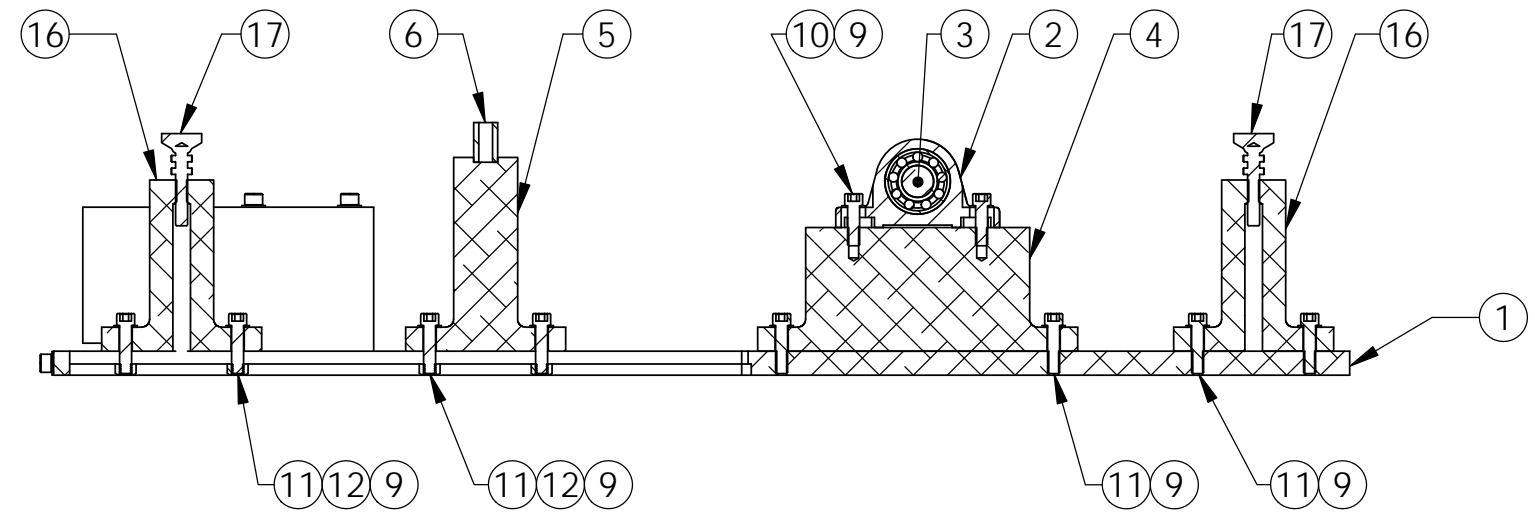
PART NAME				Base	
DESIGNER	P. KNOEHE	13 SEP 2012	SIZE	DWG. NO.	REV.
DRAFTER	P. KNOEHE	13 SEP 2012	B	D1201253	v1
CHECKER	MATCHARD	28 SEP 2012	SCALE: 1:6	PROJECTION:	SHEET 1 OF 2
APPROVAL	K. MASON	28 SEP 2012			

D1201253 Base, Rotate dual suspended seismometer short osc platform, PART PDM REV: X-000, DRAWING PDM REV:

### TRANSLATION CONFIGURATION



Note: Differences to rotation setup are missing fasteners around square hole and bumper plates



SECTION A-A

SCALE 1 : 6

18	D1201241	Base plate reinforcing plate	6061-T6 Al	2
17	JWWinco 6T2SNT	Snap-Lock Non-Skid Leveling Mount 3/8"-16 x 2" lg.	Stainless Steel	4
16	D1003096	Stop block	6061-T6 Al	4
15	McMaster 91251A651	SHC Screw 3/8-16 x 5-1/4" lg.	Alloy Steel	4
14	McMaster 90128A246	SHC Screw 1/4"-20 x 7/8" lg.	Alloy Steel	4
13	McMaster 91090A105	Flat Washer 1/4" Screw Size, 1/2" OD, .04"-.06" Thick	Alloy Steel	4
12	McMaster 95462A031	Hex Nut 3/8"-16 Thread Size, 9/16" Width, 21/64" Height	Alloy Steel	8
11	McMaster 90128A628	SHC Screw 3/8"-16 x 1-1/2" lg.	Alloy Steel	16
10	McMaster 90128A627	SHC Screw 3/8"-16 x 1-1/4" lg.	Alloy Steel	8
9	McMaster 94744A265	Flat Washer 3/8" Screw Size, 47/64" Narrow OD, .05"-.12" Thk	Alloy Steel	28
8	MEPI	Field assembly	Material <not specified>	1
7	D1003070	Actuator block	6061-T6 Al	1
6	McMaster 9623K21	Oval Wire Die Spring 3/4" Hole, 3/8" Rod, 1" Length, 5/32" X 3/32" Wire	Alloy Steel	2
5	D1003069	Spring block	6061-T6 Al	2
4	D1003068	Pillow block	6061-T6 Al	2
3	D1201240	Split shaft	AISI 304	2
2	McMaster 2773T200	High-Speed Mounted Stl Ball Bearing Base Mount, for 1" Shaft Diameter	Cast Iron	2
1	D1201265	Base plate	6061-T6 Al	1
ITEM NO.	PART NUMBER	DESCRIPTION	MATERIAL	REQ
PARTS LIST				

**LIGO** CALIFORNIA INSTITUTE OF TECHNOLOGY  
MASSACHUSETTS INSTITUTE OF TECHNOLOGY

SIZE	DWG. NO.	REV.
B	D1201253	V1
SCALE: 1:12	PROJECTION:	SHEET 2 OF 2