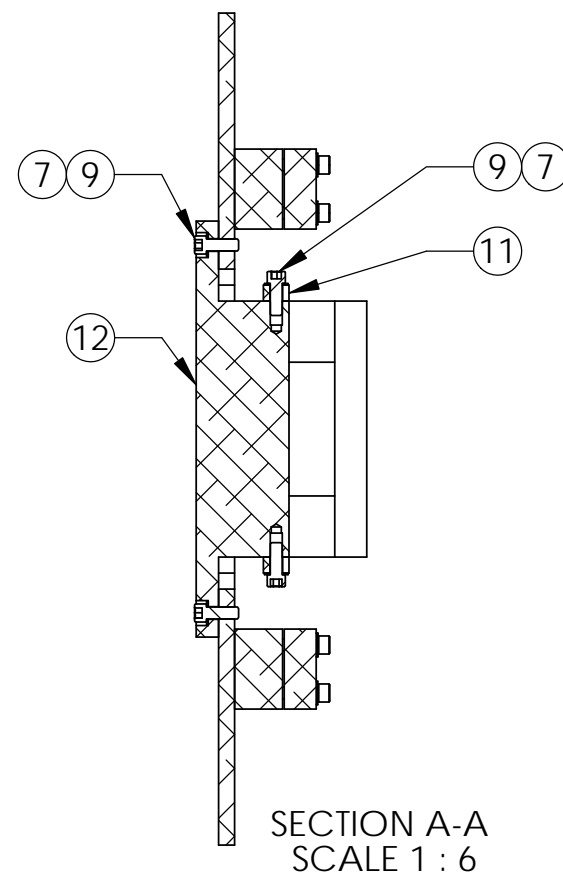
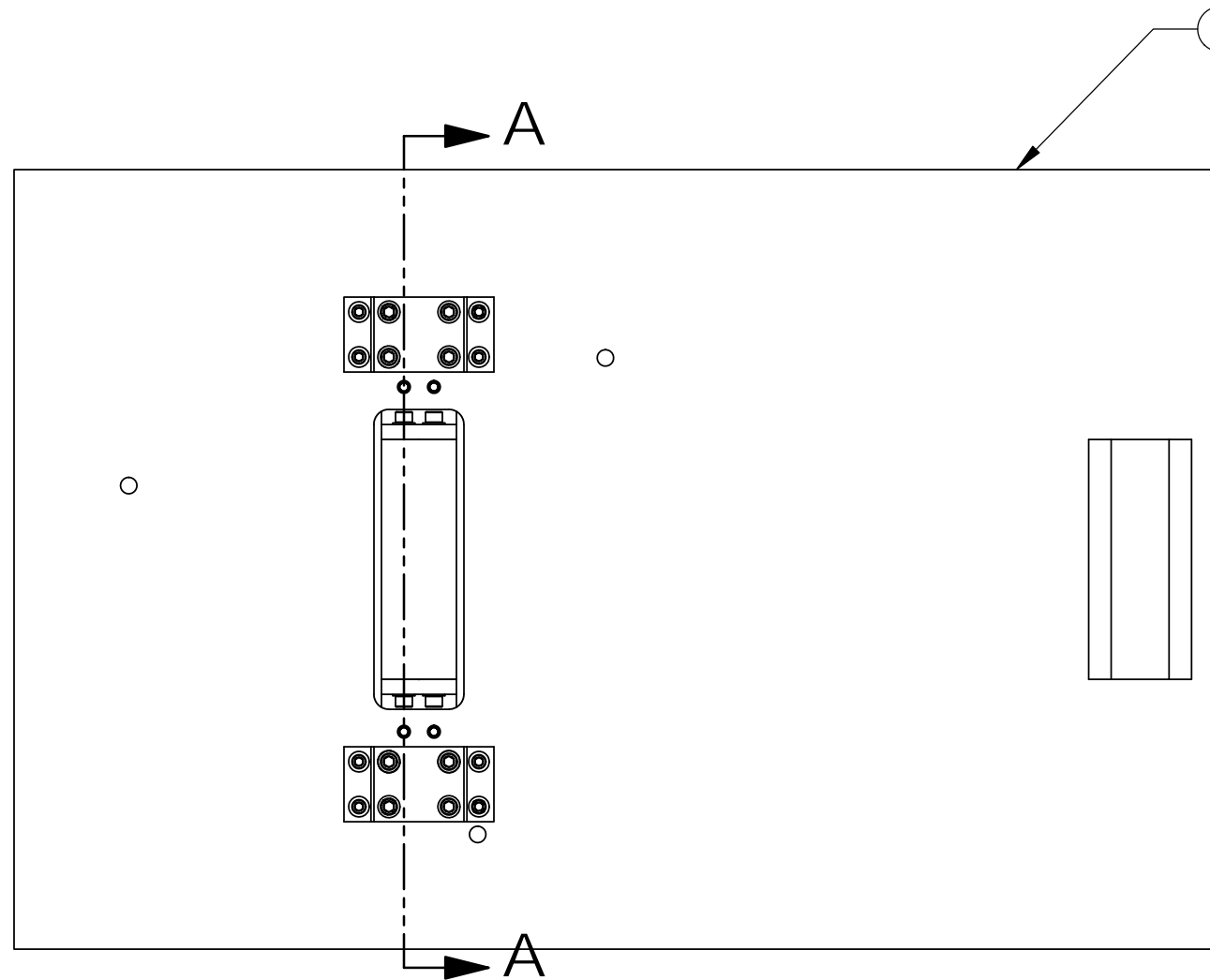
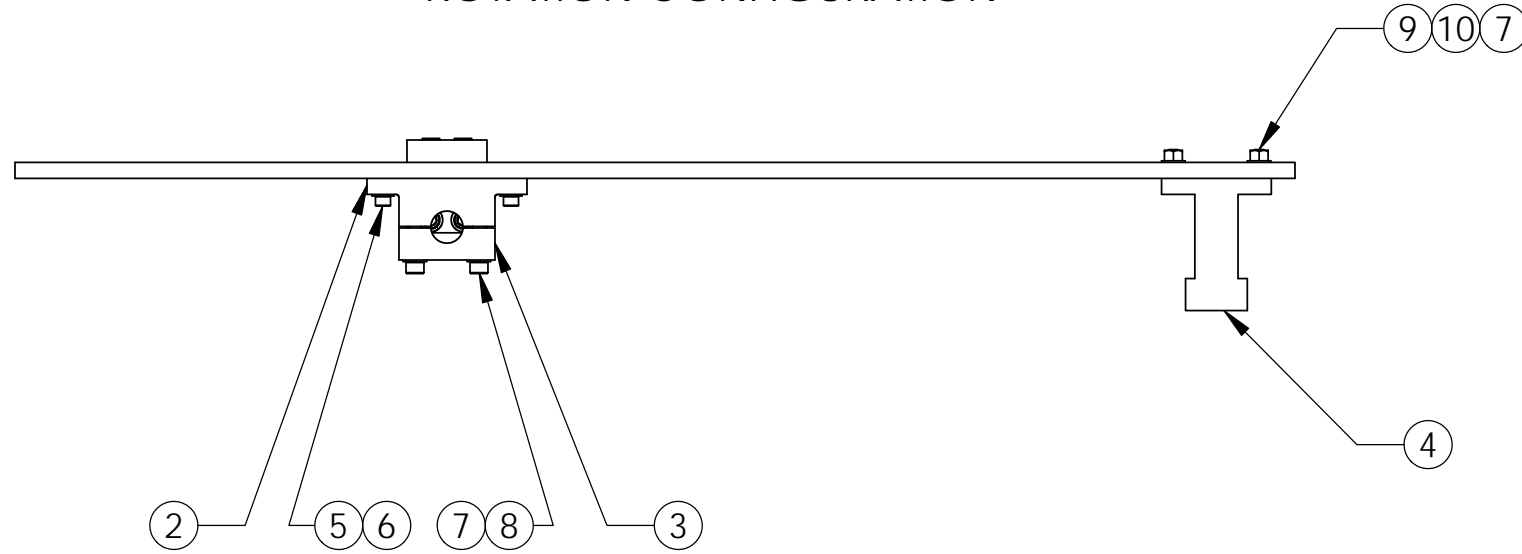


D1201254 Moving top, Rotate dual suspended seismometer short osc platform, PART PDM REV: X-000, DRAWING PDM REV:

REV.	DATE	DCN #	DRAWING TREE #
v1	28 SEP 2012	E1200841	-
-	-	-	-
-	-	-	-

ROTATION CONFIGURATION



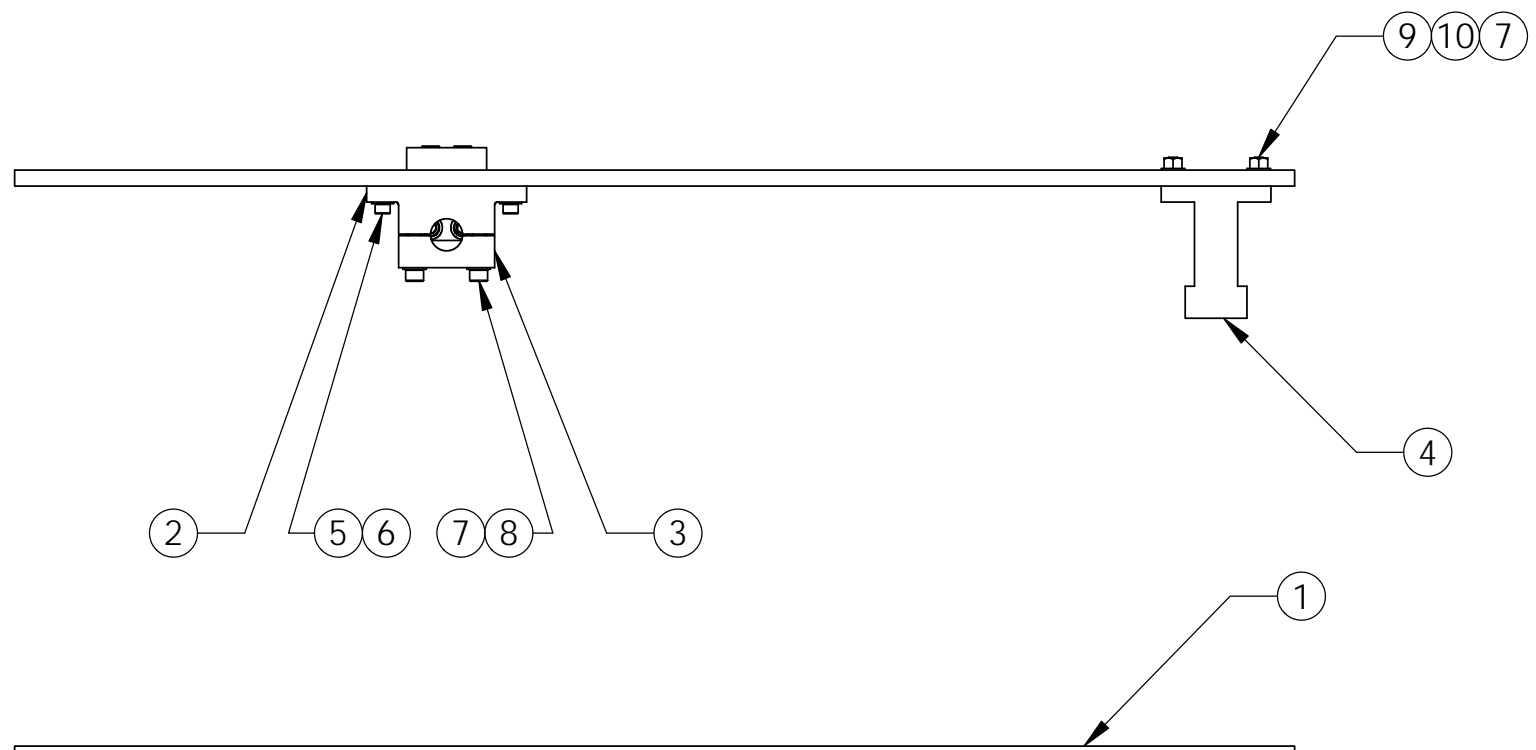
ITEM NO.	PART NUMBER	DESCRIPTION	MATERIAL	REQ
12	D1201237	Top clamp	6061-T6 Al	1
11	D1201239	Side clamp element	6061-T6 Al	2
10	McMaster 95462A031	Hex Nut 3/8"-16 Thread Size, 9/16" Width, 21/64" Height	Alloy Steel	4
9	McMaster 90128A624	SHC Screw 3/8"-16 x 1" lg.	Alloy Steel	12
8	McMaster 90128A630	SHC Screw 3/8"-16 x 1-3/4" lg.	Alloy Steel	8
7	McMaster 94744A265	Flat Washer 3/8" Screw Size, 47/64" Narrow OD, .05"-.12" Thk	Alloy Steel	22
6	McMaster 90126A030	Flat Washer 5/16" Screw Size, 11/16" OD, .05"-.08" Thick	Alloy Steel	8
5	McMaster 90128A582	SHC Screw 5/16"-18 x 7/8" lg.	Alloy Steel	8
4	MEPI	Coil assembly	Material <not specified>	1
3	D1003067	Shaft clamp top	6061-T6 Al	2
2	D1003066	Shaft clamp bottom	6061-T6 Al	2
1	D1201264	Moving plate	6061-T6 Al	1

PARTS LIST

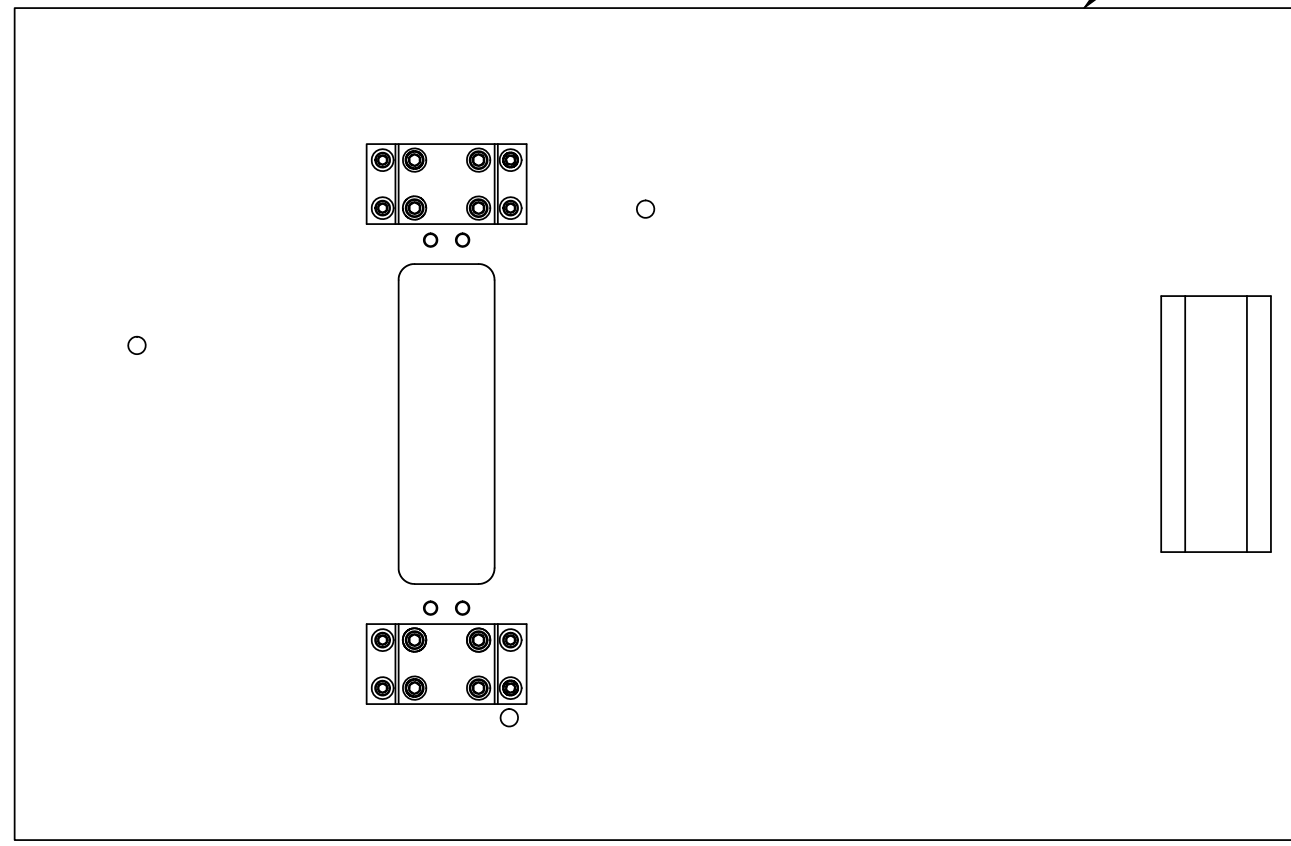
NOTES AND TOLERANCES: (UNLESS OTHERWISE SPECIFIED)				PART NAME	
DIMENSIONS ARE IN INCHES		1. INTERPRET DRAWING PER ASME Y14.5-1994.		LIGO CALIFORNIA INSTITUTE OF TECHNOLOGY MASSACHUSETTS INSTITUTE OF TECHNOLOGY	
TOLERANCES: .XX ± N/A .XXX ± N/A		2. REMOVE ALL SHARP EDGES, R.02 MIN.			
ANGULAR ± N/A °		3. DO NOT SCALE FROM DRAWING.		DESIGNER P. KNOEHE 14 SEP 2012 DRAFTER P. KNOEHE 14 SEP 2012 CHECKER M. TICHARD 28 SEP 2012 APPROVAL K. MASON 28 SEP 2012	
MATERIAL N/A		4. ADAPTED FROM D1003065		SIZE DWG. NO. B D1201254	
FINISH N/A μinch		5. APPROXIMATE WEIGHT = 70 LB. ROTATE 63 LB. TRANSLATE		REV. v1	
		NEXT ASSY D1201257 / D1201269		SCALE: 1:6 PROJECTION: SHEET 1 OF 2	

D1201254 Moving top, Rotate dual suspended seismometer short osc platform, PART PDM REV: X-000, DRAWING PDM REV:

TRANSLATION CONFIGURATION



Note: Difference to rotation setup is missing top clamp/side clamps



10	McMaster 95462A031	Hex Nut 3/8"-16 Thread Size, 9/16" Width, 21/64" Height	Alloy Steel	4
9	McMaster 90128A624	SHC Screw 3/8"-16 x 1" lg.	Alloy Steel	4
8	McMaster 90128A630	SHC Screw 3/8"-16 x 1-3/4" lg.	Alloy Steel	8
7	McMaster 94744A265	Flat Washer 3/8" Screw Size, 47/64" Narrow OD, .05"-.12" Thk	Alloy Steel	14
6	McMaster 90126A030	Flat Washer 5/16" Screw Size, 11/16" OD, .05"-.08" Thick	Alloy Steel	8
5	McMaster 90128A582	SHC Screw 5/16"-18 x 7/8" lg.	Alloy Steel	8
4	MEPI	Coil assembly	Material <not specified>	1
3	D1003067	Shaft clamp top	6061-T6 Al	2
2	D1003066	Shaft clamp bottom	6061-T6 Al	2
1	D1201264	Moving plate	6061-T6 Al	1
ITEM NO.	PART NUMBER	DESCRIPTION	MATERIAL	REQ
PARTS LIST				

CALIFORNIA INSTITUTE OF TECHNOLOGY
 MASSACHUSETTS INSTITUTE OF TECHNOLOGY

SIZE	DWG. NO.	REV.
B	D1201254	V1
SCALE: 1:8	PROJECTION:	SHEET 2 OF 2