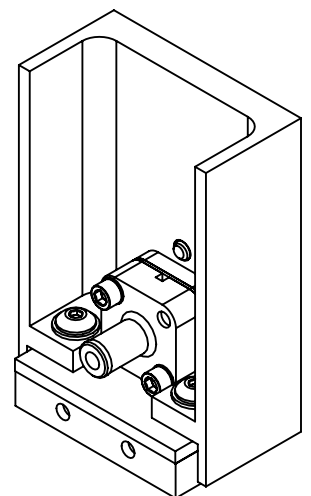
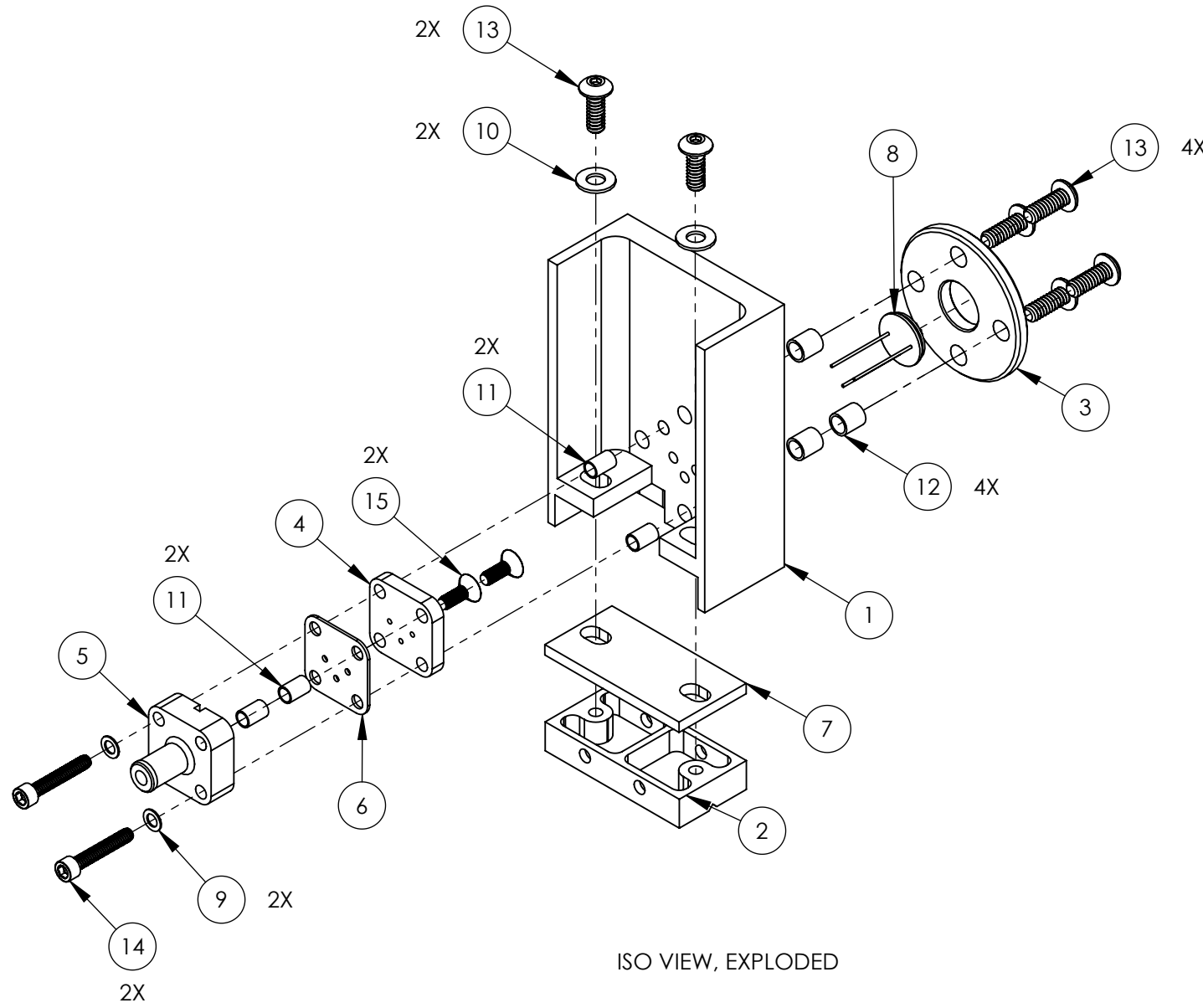


D1201273 OMC DCPD MOUNT ASSEMBLY, PART PDM REV: X-016, DRAWING PDM REV: X-007

REV.	DATE	DCN #	DRAWING TREE #
v1	13 NOV 2012	E1200997-X0	-
v2	18 MAR 2015	E1500181-x0	-
v3	18 MAR 2015	E1500181-x0	-

D
C
B
A



15	92210A077 McMASTER-CARR OR EQ.	SCREW, FHSC, #2-56 x .25	18-8 SSTL	2
14	92200A081 McMASTER-CARR OR EQ.	SCREW, SHC, #2-56 x .50	300 SSTL	2
13	BU-405-N UC COMPONENTS OR EQ.	SCREW, BHSC, #4-40 x .312	18-8 SSTL	6
12	1185-04EN224 EMHART OR EQ.	HELI-COIL #4-40 x .224"	6061-T6 (SS)	4
11	1185-02EN172 EMHART OR EQ.	HELI-COIL #2-56 x .172"	6061-T6 (SS)	4
10	98019A309 McMASTER-CARR OR EQ.	WASHER, FLAT, #4	300 SSTL	2
9	90945A705 McMASTER-CARR OR EQ.	WASHER, FLAT, NO. 2	300 SSTL	2
8		InGaAs-3000 QPD	-	1
7	D1201467	αLIGO Output Mode Cleaner Diode Shim	6061-T6 (SS)	1
6	D1201312	OMC DCPD CONNECTOR, FLEX CIRCUIT	-	1
5	D1201278	OMC DCPD CONNECTOR, BACKSHELL	Polyetheretherketone (PEEK)	1
4	D1201276	OMC DCPD CONNECTOR, FRONT	Polyetheretherketone (PEEK)	1
3	D1201275	OMC DCPD FACE PLATE	6061-T6 (SS)	1
2	D1300498	αLIGO OMC DIODE MOUNT BLOCK	AISI 304	1
1	D1201274	OMC DCDP HOUSING	6061-T6 (SS)	1
ITEM NO.	PART NUMBER	DESCRIPTION	MATERIAL	Defult /RE Q

PARTS LIST

NOTES AND TOLERANCES: (UNLESS OTHERWISE SPECIFIED)		ESTIMATED WEIGHT: 49.27 g.		CALIFORNIA INSTITUTE OF TECHNOLOGY MASSACHUSETTS INSTITUTE OF TECHNOLOGY		PART NAME OMC DCPD MOUNT ASSEMBLY			
DIMENSIONS ARE IN INCHES		TOLERANCES: .XX ± .01 .XXX ± .005		SYSTEM ADVANCED LIGO	SUB-SYSTEM ISC	DESIGNER J.LEWIS	13 NOV 2012	SIZE DWG. NO. B D1201273	REV. v3
ANGULAR ± 1.0°	MATERIAL SEE BOM	FINISH N/A μinch	NEXT ASSY D1201439	CHECKER	J.LEWIS	13 NOV 2012	SCALE: 1:1	PROJECTION:	SHEET 1 OF 1

8 7 6 5 4 3 2 1