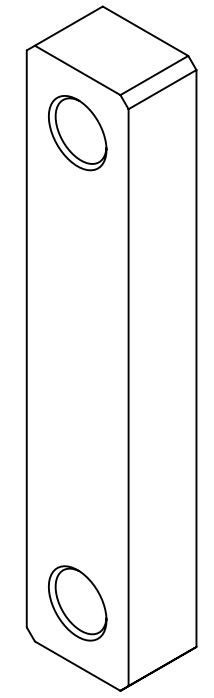
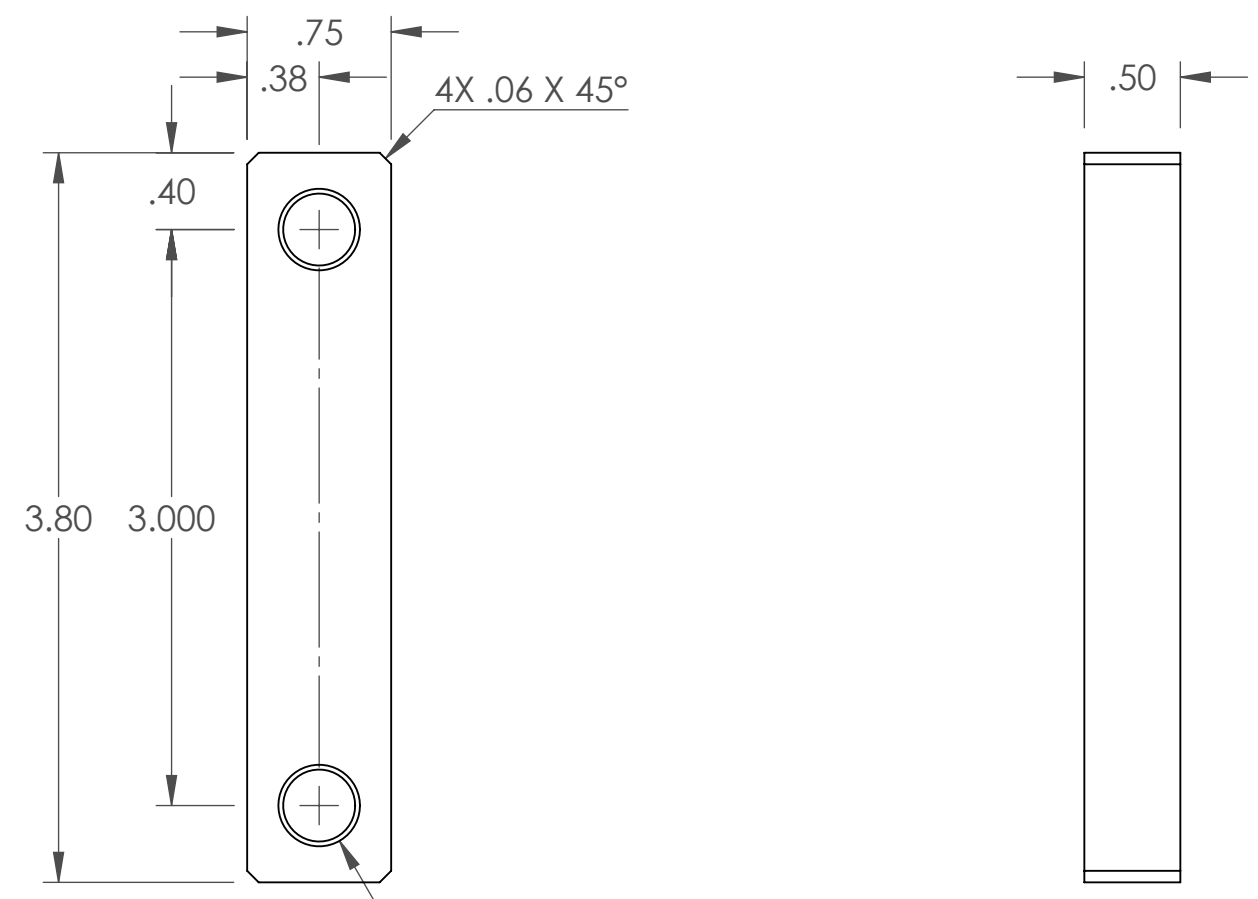


D1201494 cLIGO Pcal Tooling, Nut Plate, PART PDM REV: X-005, DRAWING PDM REV: X-000

REV.	DATE	DCN #	DRAWING TREE #
v1	20 DEC 2012	N/A	-



2X 3/8-16 UNC - 2B, H11, THRU
 (.005 OVERSIZE) BOTH DRILL & TAP
 ✓ TO MAJOR Ø BOTH SIDES

DIMENSIONS ARE IN INCHES TOLERANCES: .XX ± .01 .XXX ± .005 ANGULAR ± 1.0°		NOTES AND TOLERANCES: (UNLESS OTHERWISE SPECIFIED) 1. INTERPRET DRAWING PER ASME Y14.5-1994. 2. REMOVE ALL SHARP EDGES, .03 MIN. 3. DO NOT SCALE FROM DRAWING.		CALIFORNIA INSTITUTE OF TECHNOLOGY MASSACHUSETTS INSTITUTE OF TECHNOLOGY		PART NAME cLIGO PCAL TOOLING NUT PLATE	
MATERIAL 6061-T6 Al		FINISH N/A		SYSTEM ADVANCED LIGO		SUB-SYSTEM AOS	
DESIGNER C. CONLEY		DRAPER R. SAVAGE		DATE 28 NOV 2012		SIZE DWG. NO. B D1201494	
CHECKER C. CONLEY		APPROVAL		DATE 20 DEC 2012		REV. v1	
SCALE: NONE		PROJECTION:		SHEET 1 OF 1			

8 7 6 5 4 3 2 1

D C B A

D C B A

8 7 6 5 4 3 2 1