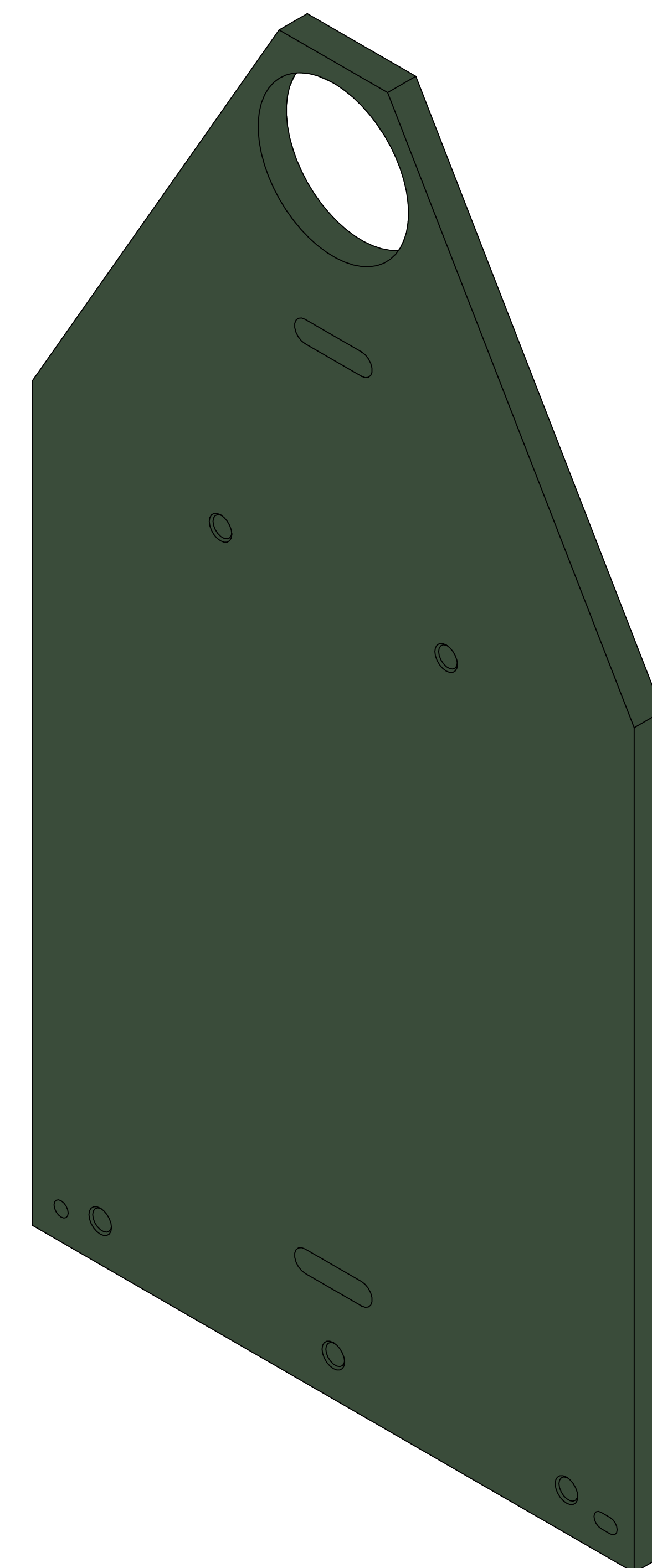
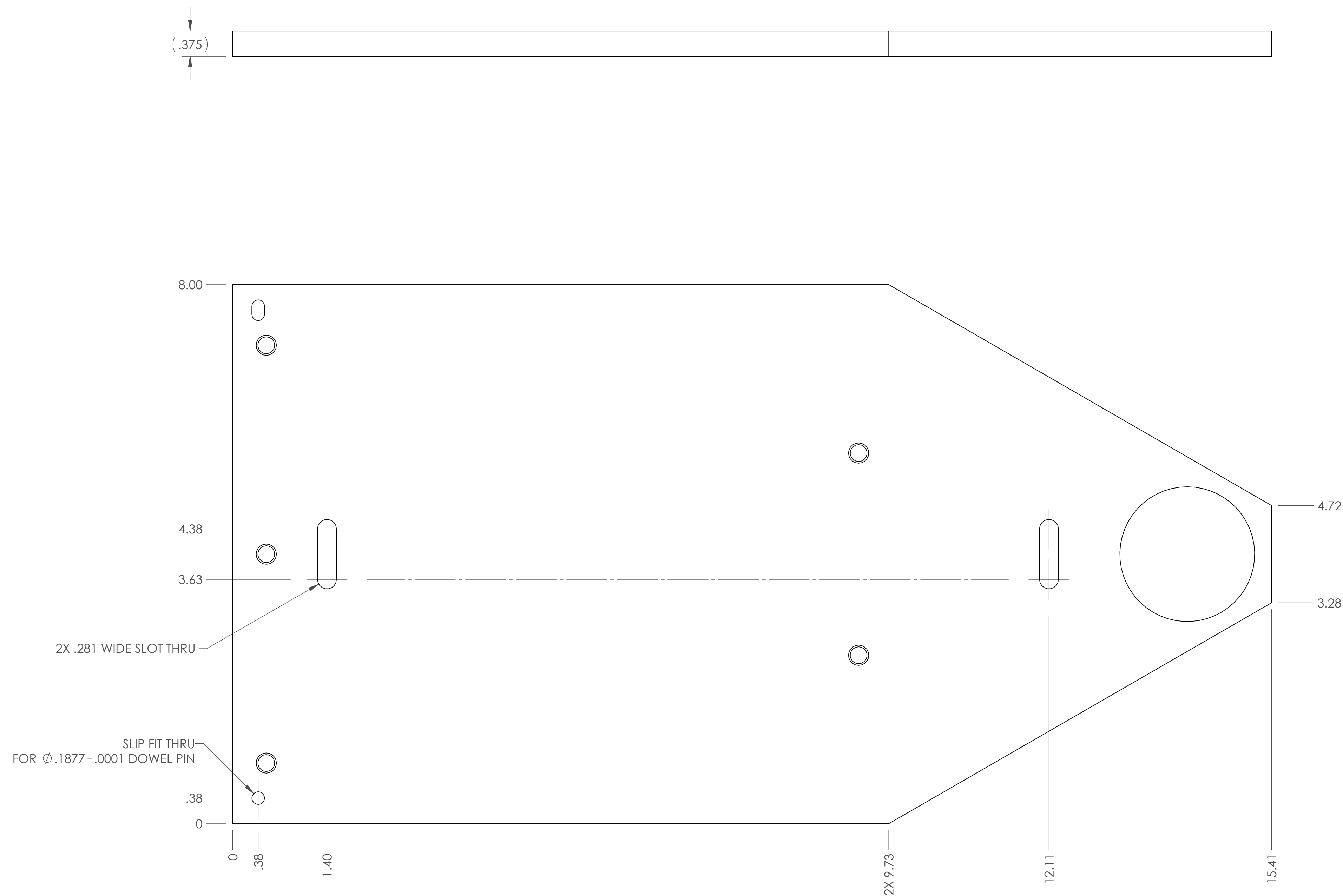


NOTES (CONTINUED):  
 4. WEIGHT: 3.68 LB.  
 5. SURFACE FINISH TO BE AS-PROCESSED FROM SUPPLIER.

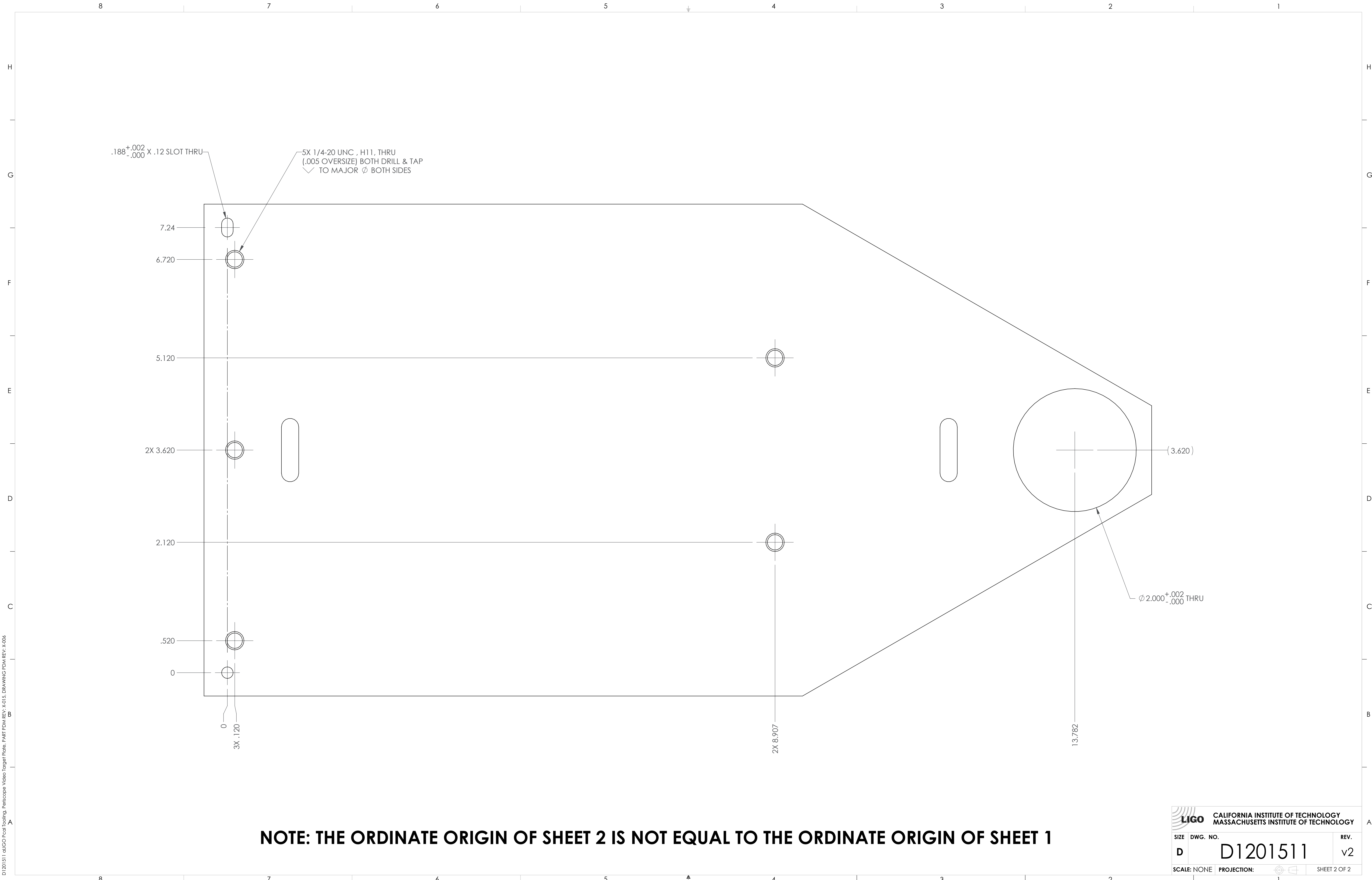
REV.	DATE	DCN #	BOM #
v1	13 DEC 2012	-	-
v2	10 JAN 2013	-	-



**NOTE: THE ORDINATE ORIGIN OF SHEET 2 IS NOT EQUAL TO THE ORDINATE ORIGIN OF SHEET 1**

NOTES AND TOLERANCES: (UNLESS OTHERWISE SPECIFIED)				LIGO CALIFORNIA INSTITUTE OF TECHNOLOGY MASSACHUSETTS INSTITUTE OF TECHNOLOGY		PART NAME aLIGO PCAL TOOLING, PERISCOPE VIDEO TARGET PLATE							
DIMENSIONS ARE IN INCHES		1. INTERPRET DRAWING PER ASME Y14.5-1994. 2. REMOVE ALL SHARP EDGES, .03 MIN. 3. DO NOT SCALE FROM DRAWING.		SYSTEM	ADVANCED LIGO	SUB-SYSTEM	AOS	DESIGNER	R. SAVAGE	30 NOV 2012	SIZE	DWG. NO.	REV.
TOLERANCES: .XX ± .02 .XXX ± .005		MATERIAL ALUMINUM TOOLING PLATE, 3/8"		NEXT ASSY		D1201543		DRAFTER	C. CONLEY	14 DEC 2012	D	D1201511	v2
ANGULAR ± 1.0°		FINISH 5						CHECKER			SCALE: NONE	PROJECTION:	SHEET 1 OF 2

D:\2013\11\aligo\pcal\tooling\periscope\video\target\plate.prt PART PDM REV: X-015 DRAWING PDM REV: X-006



**NOTE: THE ORDINATE ORIGIN OF SHEET 2 IS NOT EQUAL TO THE ORDINATE ORIGIN OF SHEET 1**

<b>CALIFORNIA INSTITUTE OF TECHNOLOGY</b> <b>MASSACHUSETTS INSTITUTE OF TECHNOLOGY</b>		REV.
SIZE	DWG. NO.	REV.
D	D1201511	v2
SCALE: NONE	PROJECTION:	SHEET 2 OF 2

D1201511.ctb:CO-Focal Tecling, Periscope Video Target Plate, PART PDM, REV. X-013, DRAWING PDM, REV. X-006