

NOTES CONTINUED:

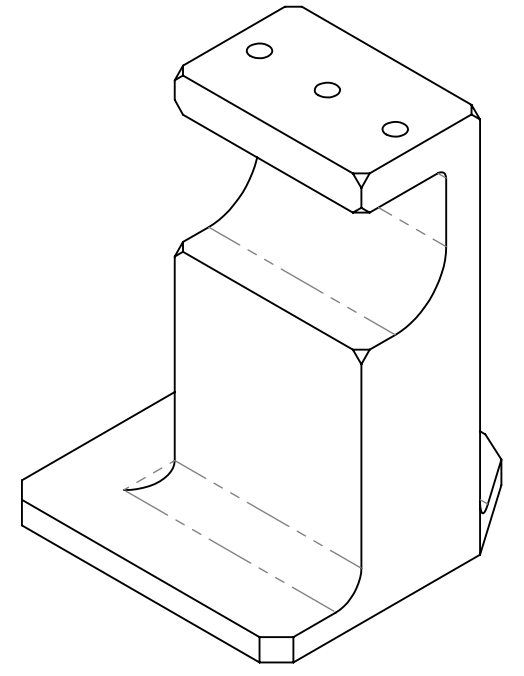
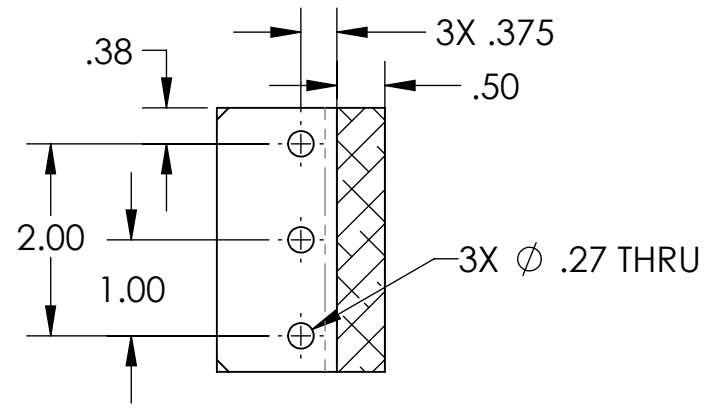
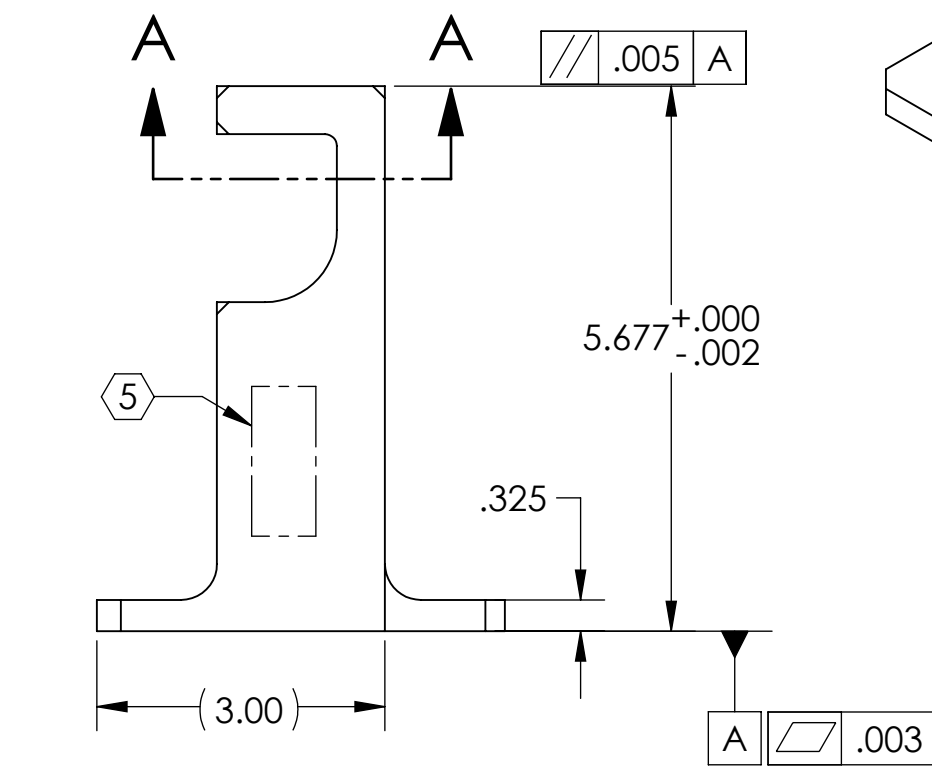
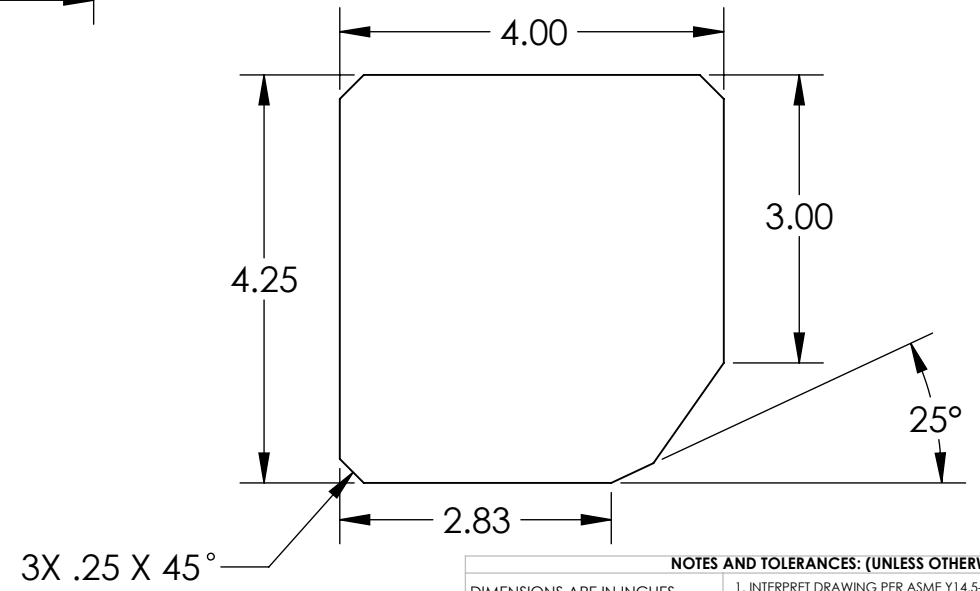
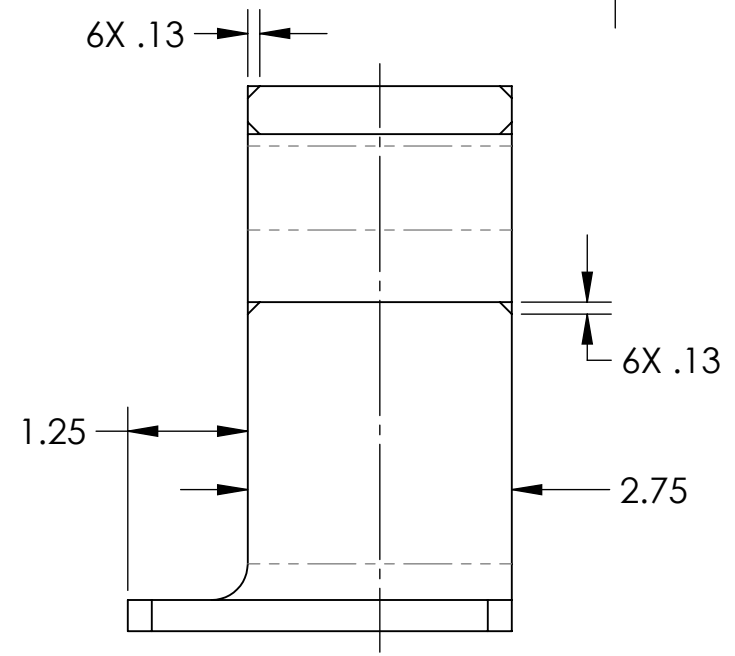
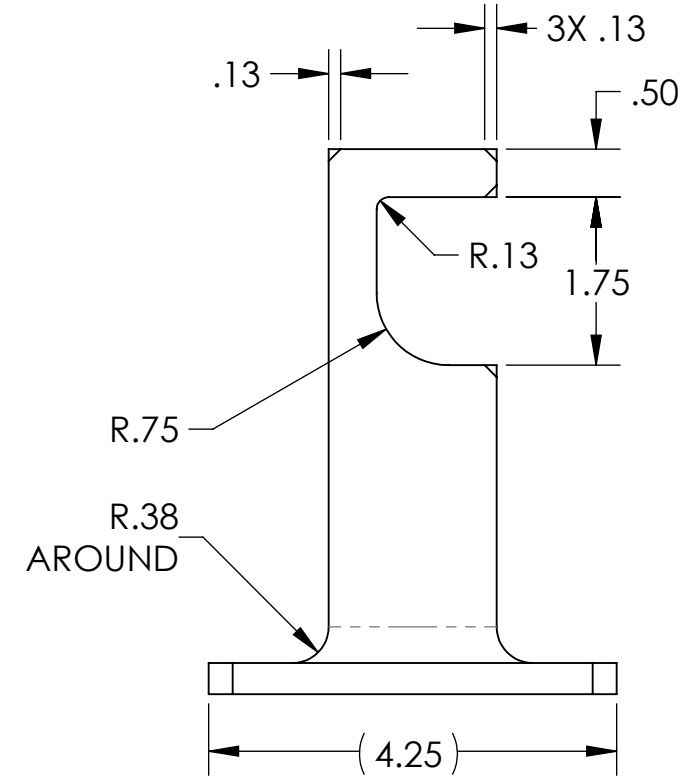
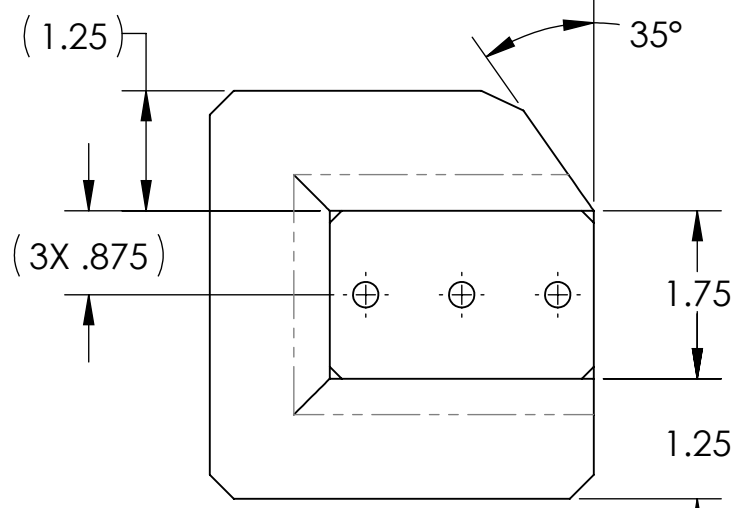
5. SCRIBE, ENGRAVE (A VIBRATORY TOOL MAY BE USED), LASER MARK OR MECHANICALLY STAMP (NO INKS OR DYES) DRAWING PART NUMBER, REVISION (AND VARIANT OR "TYPE" IF APPLICABLE) ON NOTED SURFACE OF PART FOLLOWED ON THE NEXT LINE WITH A THREE DIGIT SERIAL NUMBER. SERIAL NUMBERS START AT 001 FOR THE FIRST ARTICLE AND PROCEED CONSECUTIVELY. USE MINIMUM 0.12" HIGH CHARACTERS, UNLESS THE SIZE OF THE PART DICTATES SMALLER CHARACTERS. EXAMPLE: DXXXXXX-VY, TYPE-XX, S/N XXX

6. APPROXIMATE WEIGHT = 2.49 LB.

7. MACHINE ALL SURFACES TO REMOVE OXIDES AND MILL FINISH. USE OF ABRASIVE REMOVAL TECHNIQUES IS NOT ALLOWED. REFER TO LIGO-E0900364

8. ALL PARTS SHALL BE MANUFACTURED IN ACCORDANCE WITH LIGO SPECIFICATION E0900364.

9. ALL MATERIAL IS TO BE VIRGIN MATERIAL (i.e. NO WELD REPAIRS, PLUGS OR RECYCLED MATERIAL). NO REPAIRS SHALL BE MADE UNLESS APPROVED IN ADVANCE, AND IN WRITING, BY LIGO LABORATORY. REFER TO LIGO-E0900364.



D1201558_dLIGO_PESDESTAL_WHAM4_HWSX_4IN_MIRROR_MOUNT, PART PDM REV: X-000, DRAWING PDM REV: X-003

NOTES AND TOLERANCES: (UNLESS OTHERWISE SPECIFIED)

DIMENSIONS ARE IN INCHES

TOLERANCES:
 .XX ± .01
 .XXX ± .005
 ANGULAR ± 1.0°

MATERIAL: 6061 Alloy

FINISH: 63 μinch

CALIFORNIA INSTITUTE OF TECHNOLOGY
 MASSACHUSETTS INSTITUTE OF TECHNOLOGY

SYSTEM: ADVANCED LIGO
 SUB-SYSTEM: AOS
 NEXT ASSY: D1101083

| | | | |
|--------------|-------------|-----------------------------|-----------------|
| PART NAME | | WHAM4 HWSX 4IN MIRROR MOUNT | |
| DESIGNER | M. JACOBSON | 17-DEC-2012 | SIZE DWG. NO. |
| DRAFTER | M. JACOBSON | 19-DEC-2012 | B |
| CHECKER | E. SANCHEZ | 19-DEC-2012 | D1201558 |
| APPROVAL | A. BROOKS | 05-DEC-2012 | REV. v1 |
| SCALE: 1:2 | | PROJECTION: | |
| SHEET 1 OF 1 | | | |