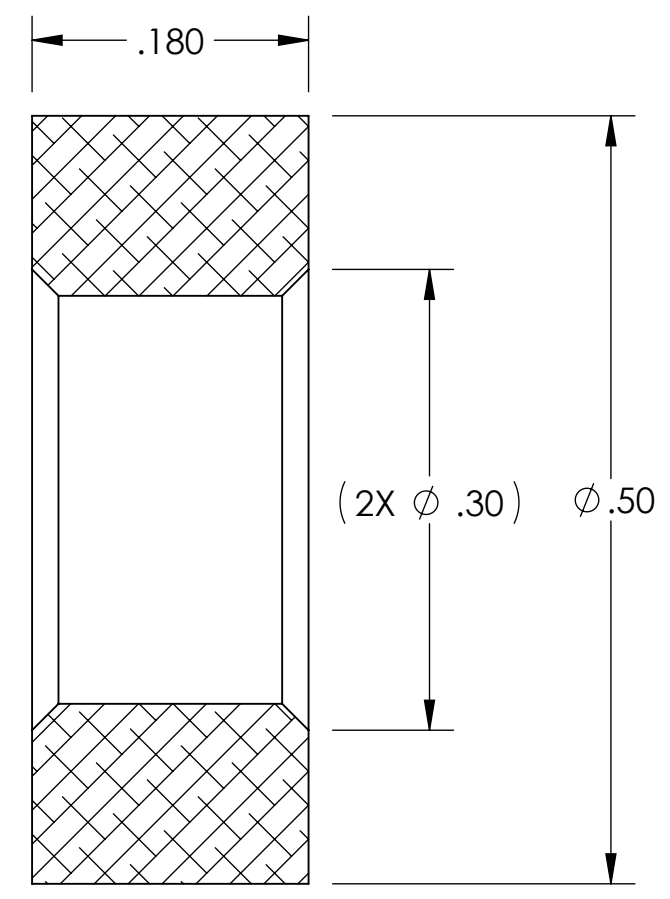
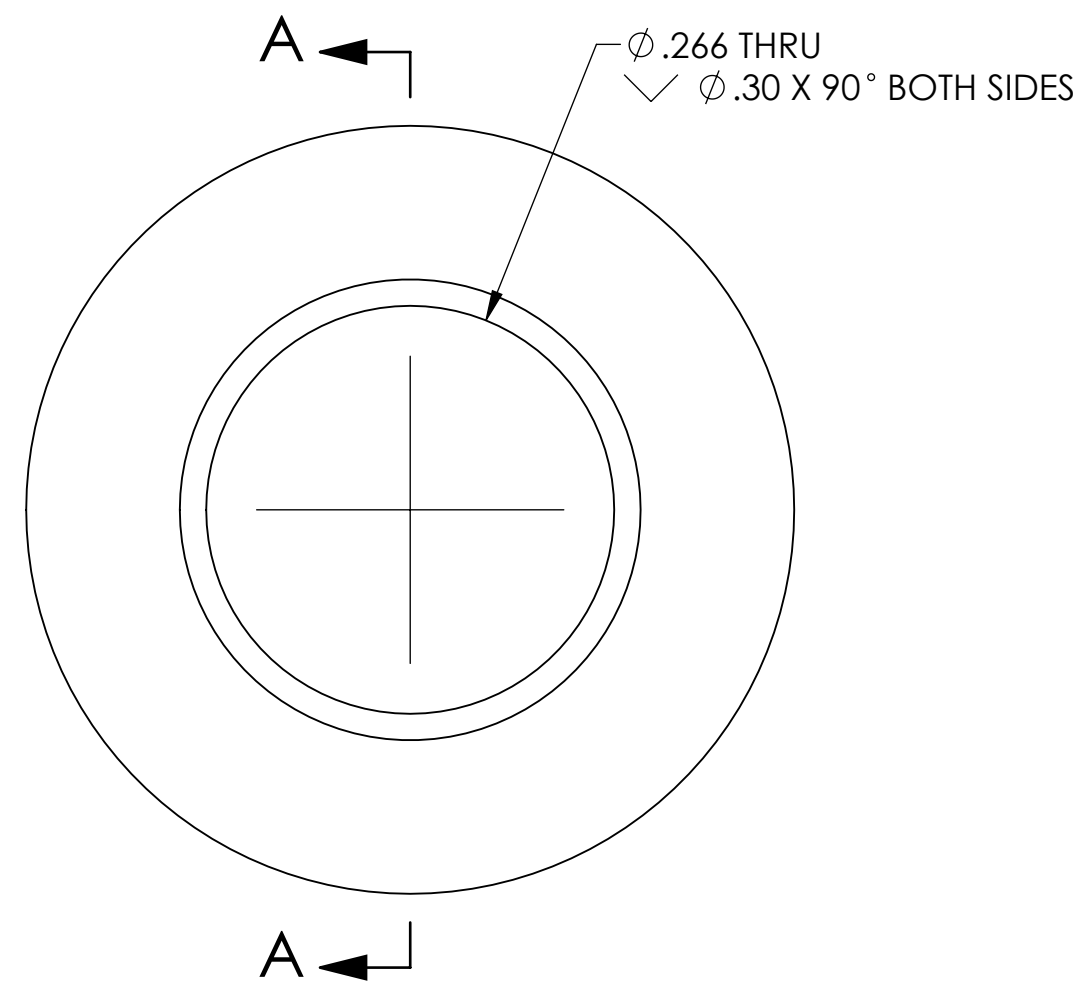
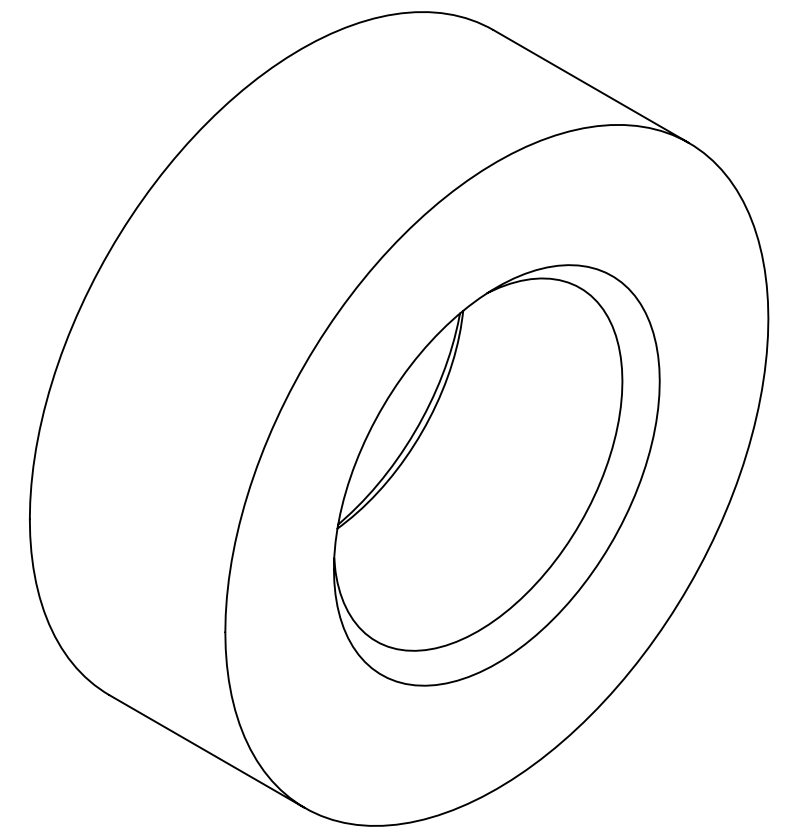


REV.	DATE	DCN #	BOM #
v1	11 JAN 2013	-	-
v2	24 JAN 2013	-	-



SECTION A-A



D1300025 aLIGO Pcal Tooling, Pin Pressing Gauge, PART PDM REV: X-001, DRAWING PDM REV: X-001

NOTES AND TOLERANCES: (UNLESS OTHERWISE SPECIFIED)				LIGO CALIFORNIA INSTITUTE OF TECHNOLOGY MASSACHUSETTS INSTITUTE OF TECHNOLOGY		PART NAME	
DIMENSIONS ARE IN INCHES TOLERANCES: .XX $\pm .01$.XXX $\pm .005$ ANGULAR $\pm 1.0^\circ$				1. INTERPRET DRAWING PER ASME Y14.5-1994. 2. REMOVE ALL SHARP EDGES, .005-.015. 3. DO NOT SCALE FROM DRAWING.		aLIGO PCAL TOOLING, PIN PRESSING GAUGE	
MATERIAL		FINISH		NEXT ASSY		DESIGNER	REV.
6061-T6 Al		N/A		N/A		C. CONLEY	v2
				SUB-SYSTEM		DRAWN	DATE
				AOS		C. CONLEY	11 JAN 2013
						CHECKER	SIZE DWG. NO.
						APPROVAL	B D1300025
						SCALE: NONE PROJECTION: SHEET 1 OF 1	