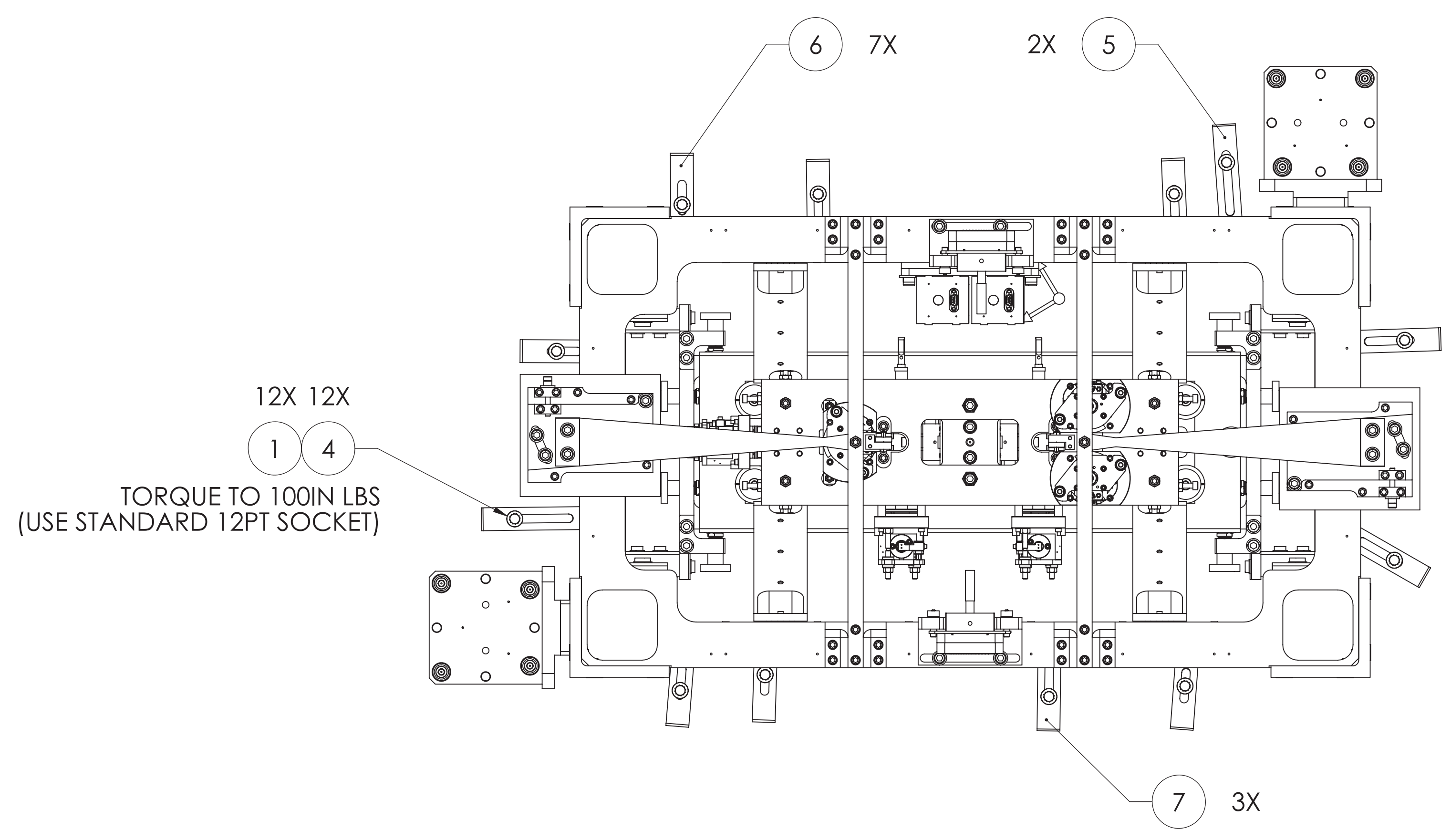
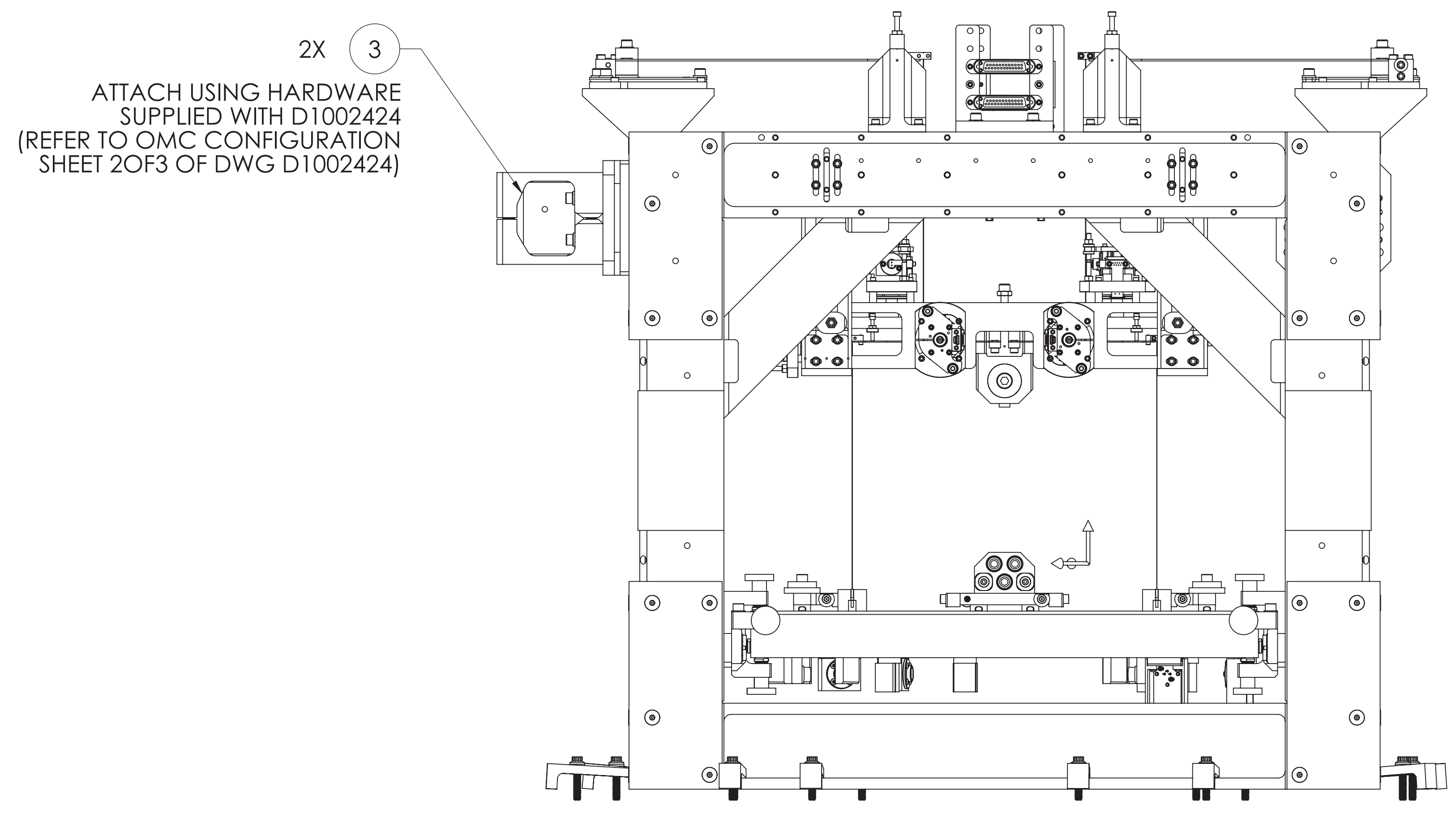
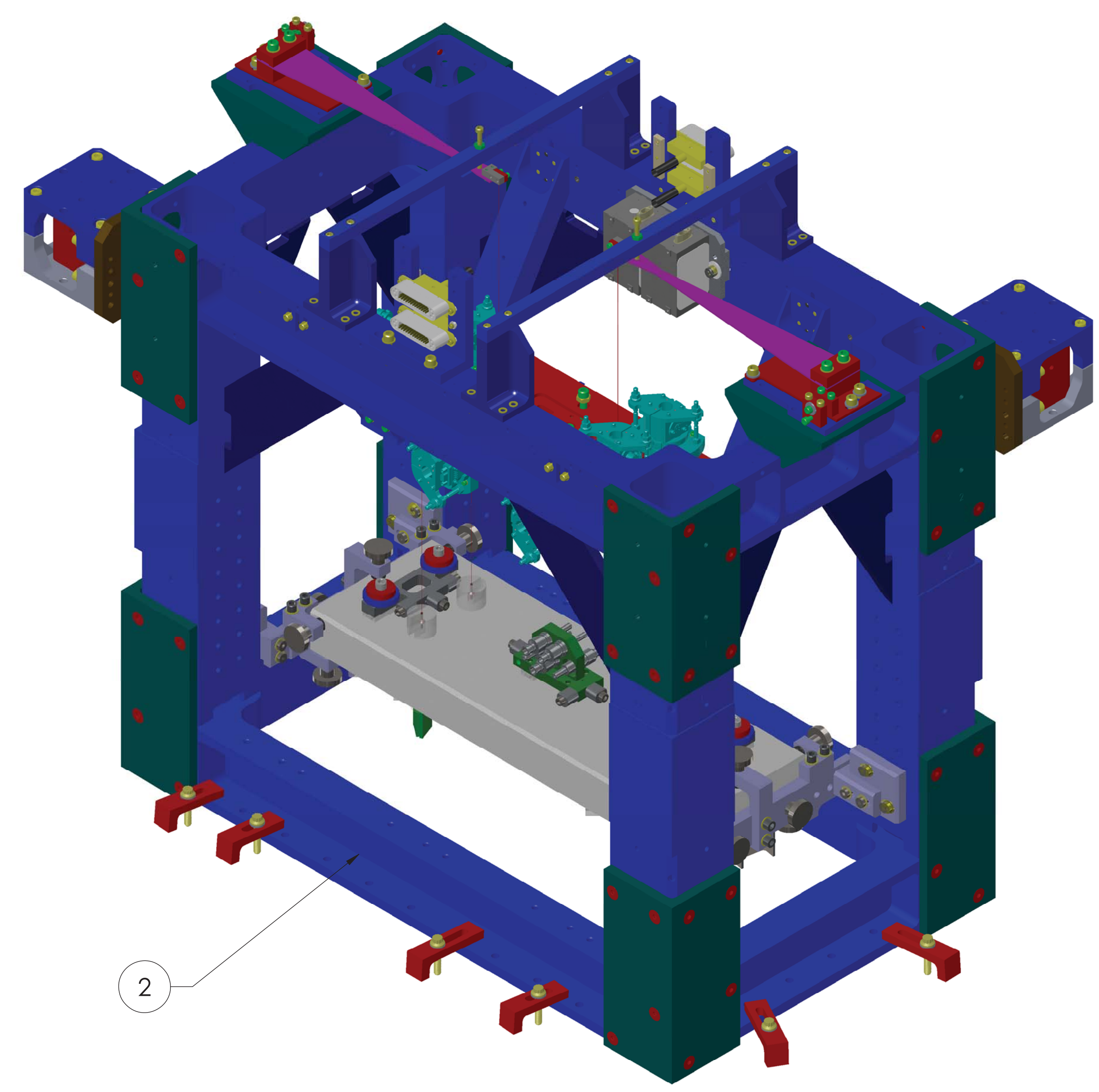


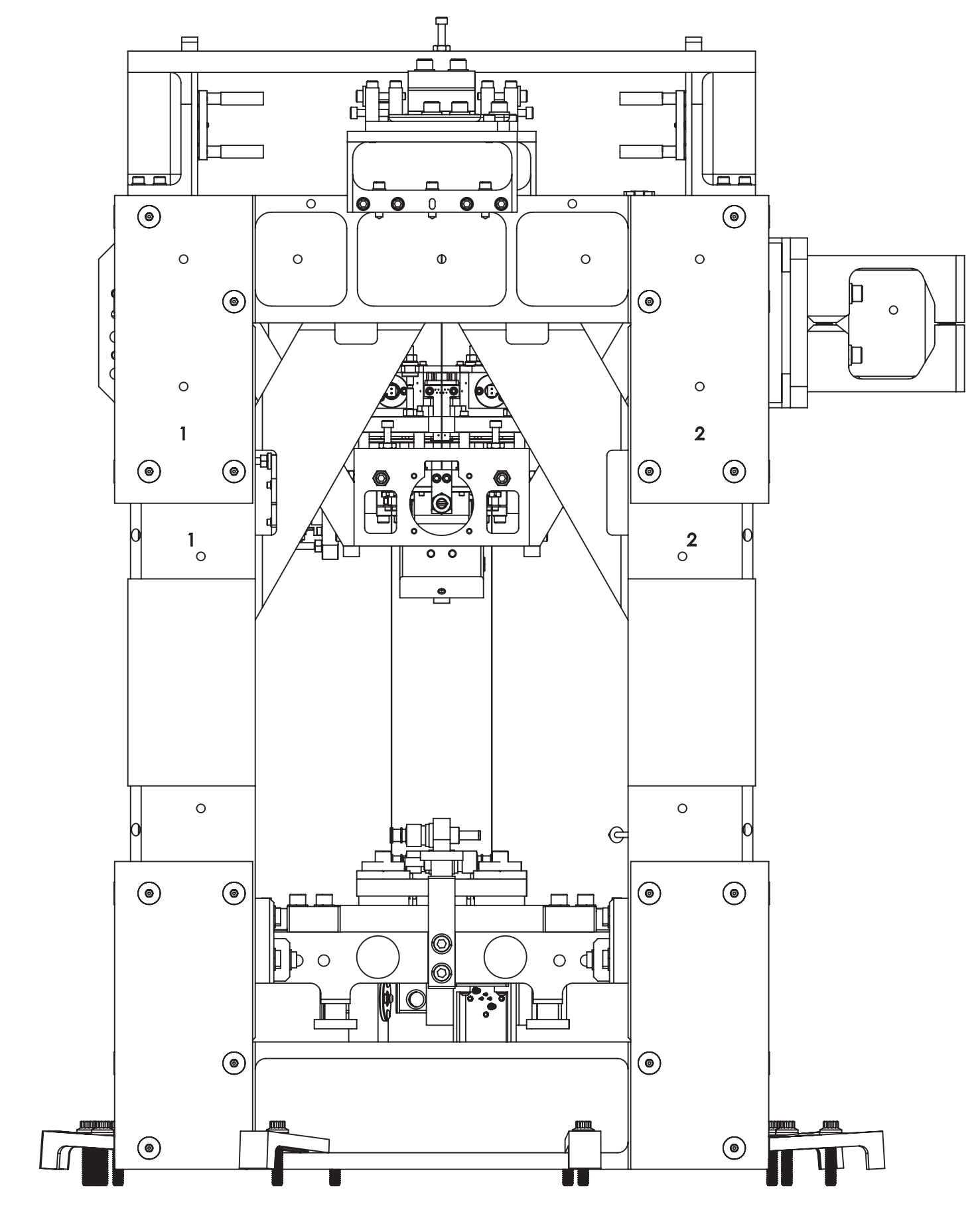
REV.	DATE	DCN #	DRAWING TREE #
v1	06 FEB 2013	-	-
v2	18 MAR 2013	-	-
v3	11 MAR 2014	E1400100-x0	-



TOP VIEW



FRONT VIEW

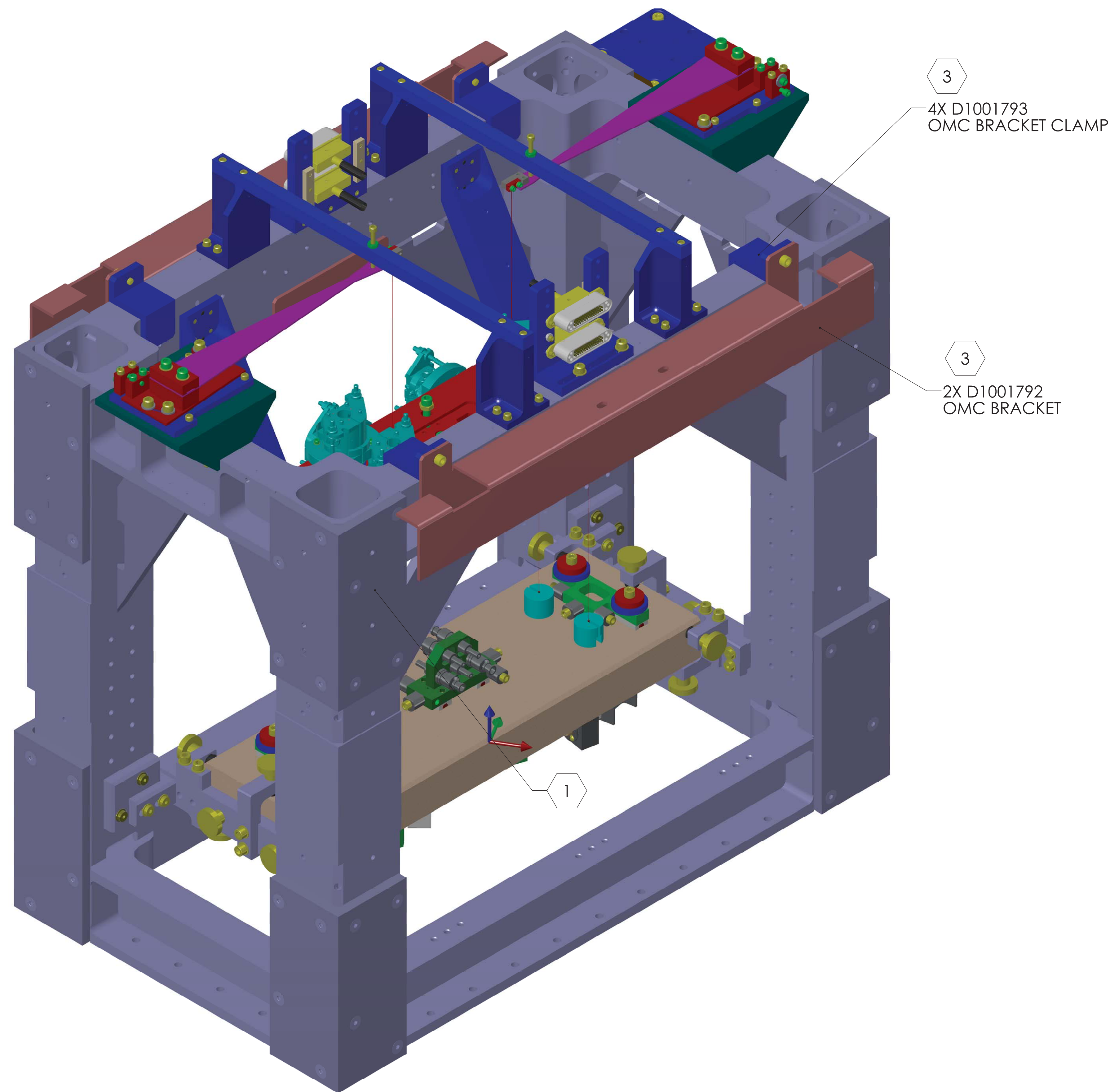


RIGHT VIEW

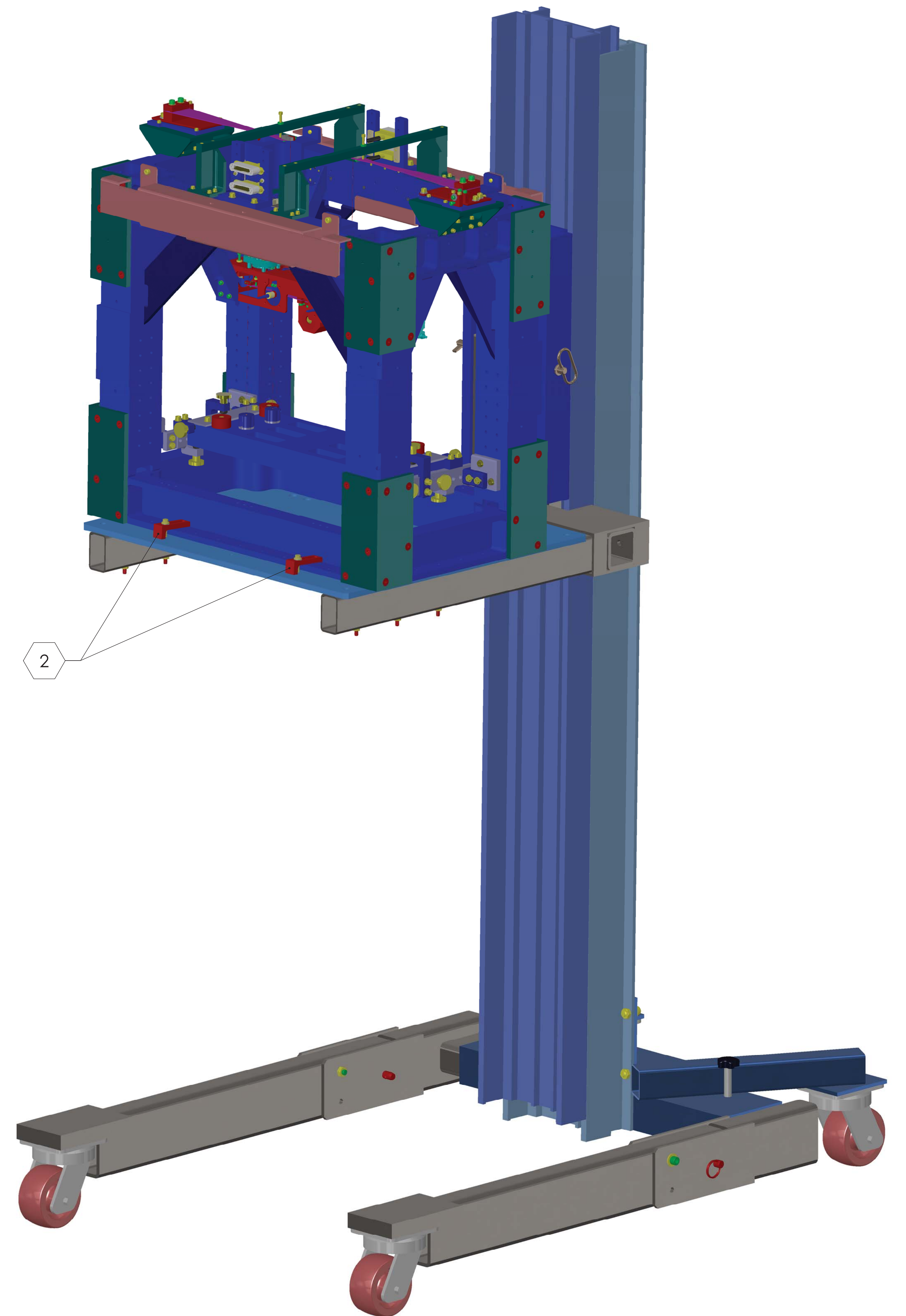
ITEM NO.	PART NUMBER	DESCRIPTION	MATERIAL	REQ
7	D1100640-05	AdvLIGO HAM Optics Table Dog Clamp SOS Suspension .563M	304 SS TL	3
6	D1100640-04	AdvLIGO HAM Optics Table Dog Clamp SOS Suspension .563S	304 SS TL	7
5	D1100640-06	AdvLIGO HAM Optics Table Dog Clamp SOS Suspension .563L	304 SS TL	2
4	2AL1.25-12SL	1/4-20 X 1.25 12PT BOLT	450 SS TL	12
3	D1002424	VIBRATION ABSORBER ASSEMBLY	N/A	2
2	D0900295	OMCS OVERALL ASSY	N/A	1
1	D1100785-530	WASHER, FLAT, .25 X .530 O.D.	NITRONIC 60	12

NOTES AND TOLERANCES: (UNLESS OTHERWISE SPECIFIED) DIMENSIONS ARE IN INCHES [MM] TOLERANCES: .XX ± .25 .XXX ± .13 ANGULAR ± .5°		1. INTERPRET DRAWING PER ASME Y14.5-1994 2. REMOVE ALL SHARP EDGES, .005-.015, FOR MACHINED PARTS. ROUND ALL EDGES APPROXIMATELY R.02 FOR SHEET METAL PARTS. 3. DO NOT SCALE FROM DRAWING. 4. ALL MACHINING FLUIDS MUST BE FULLY SYNTHETIC, FULLY WATER SOLUBLE AND FREE OF SULFUR, SILICONE, AND CHLORINE.		CALIFORNIA INSTITUTE OF TECHNOLOGY MASSACHUSETTS INSTITUTE OF TECHNOLOGY SYSTEM SUB-SYSTEM		PART NAME AdvLIGO SEI HAM6-L1, XYZ Local CS for Output Mode Cleaner		DESIGNER DRAFTER ED CHAVEZ CHECKER APPROVAL		SIZE DWG. NO. E D1300077		REV. v3	
MATERIAL N/A		FINISH N/A μinch		NEXT ASSY		SCALE: 1:4		PROJECTION:		SHEET 1 OF 5			

- ① VIBRATION ABSORBER ON THE LONG SIDE OF THE STRUCTURE FRAME HAS BEEN REMOVED TO AVOID INTERFERENCE WITH LIFT BRACKET.
- ② OMC STRUCTURE SHOULD BE LOCKED DOWN TO GENIE PLATE WHEN TRANSPORTING TO CHAMBER
- ③ INDICATED ITEMS ARE FOR TRANSPORTATION PURPOSES ONLY AND ARE NOT PART OF FINISHED ASSEMBLY. SEE PAGE 1 FOR REFERENCE.



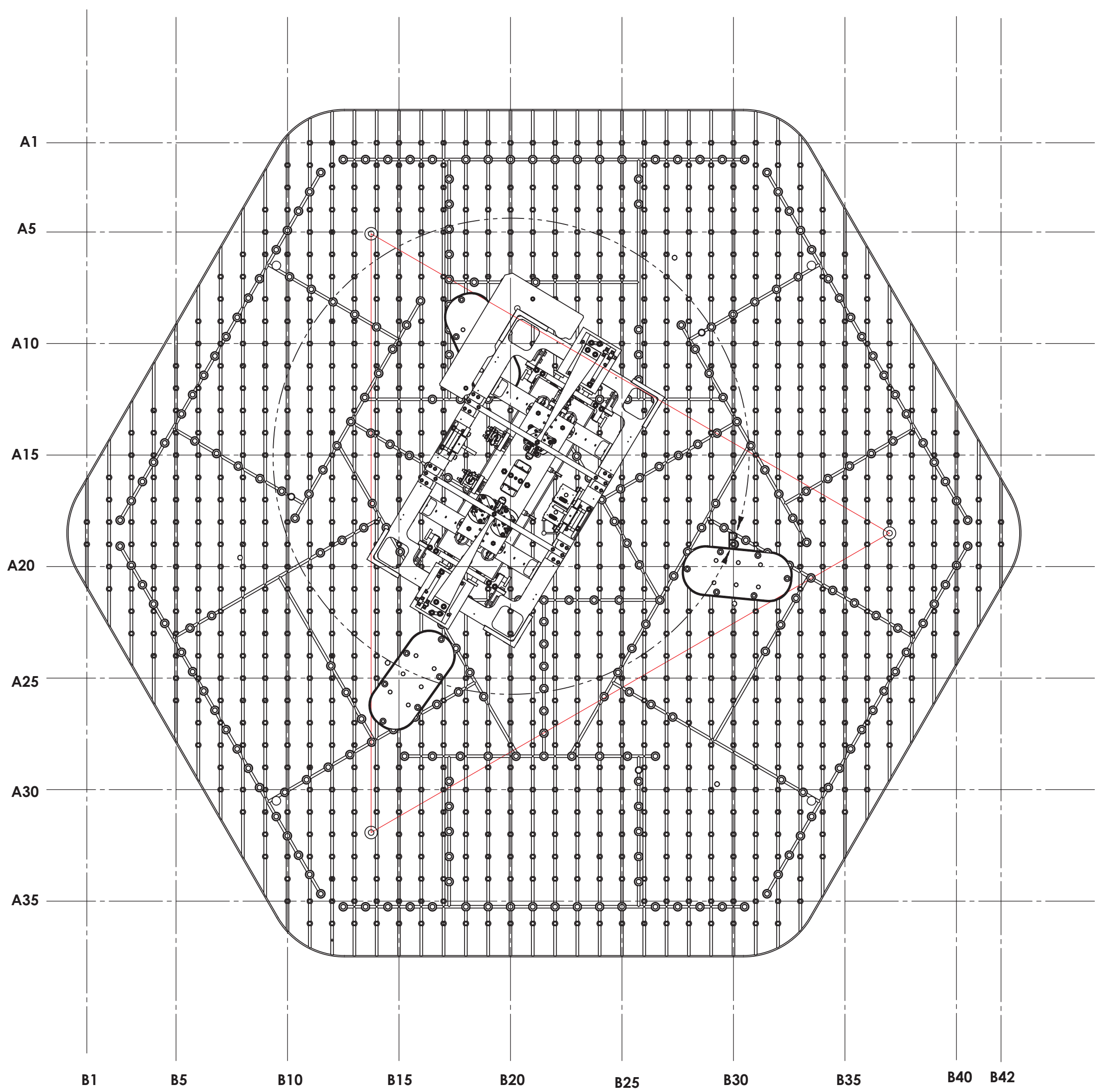
**OUTPUT MODE CLEANER
TRANSPORT STATE**



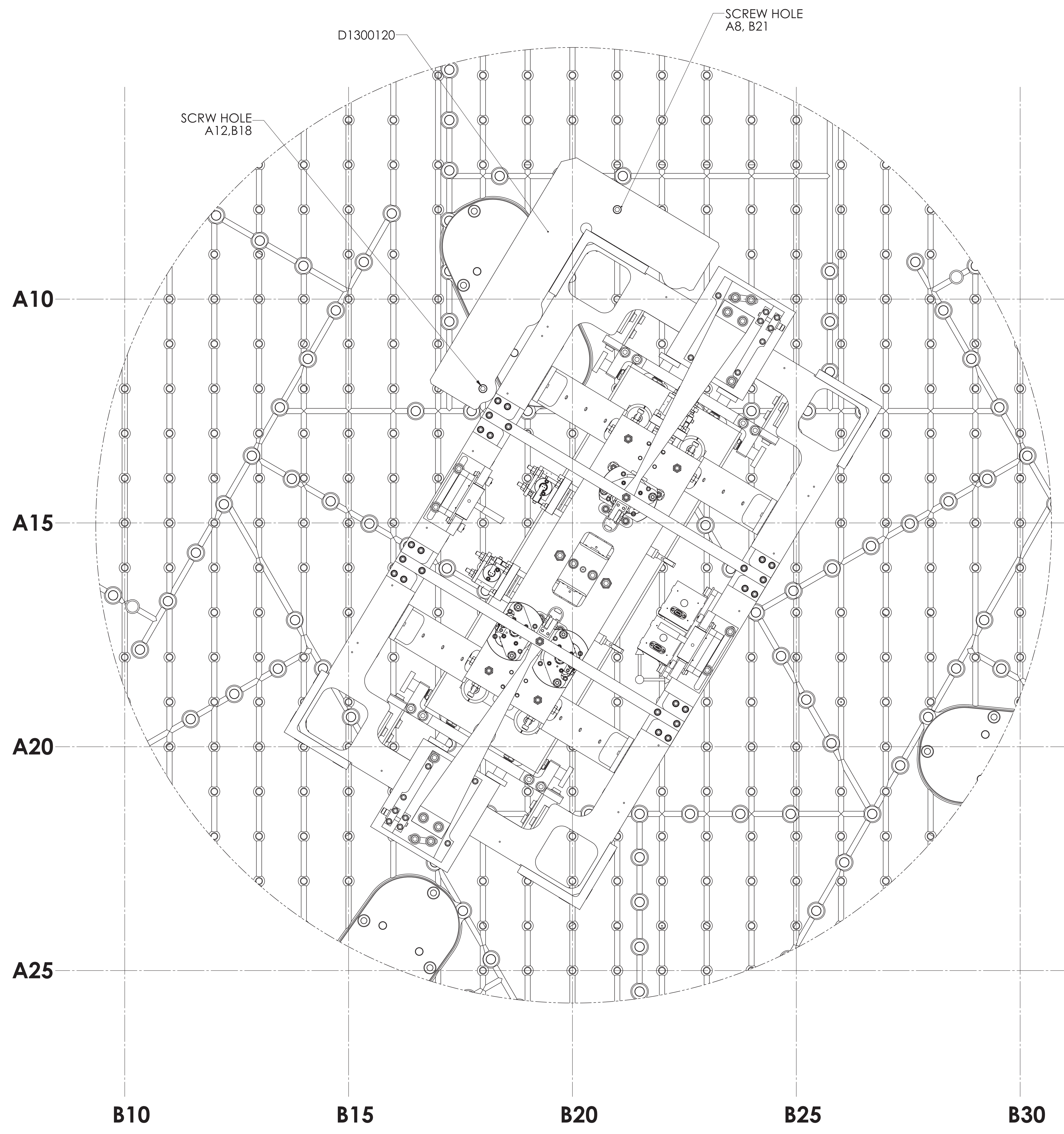
**OMC WITH GENIE
READY FOR TRANSPORTING
TO CHAMBER**

OMC STRUCTURE TRANSPORT STATE

HAM5-L1



TOP VIEW

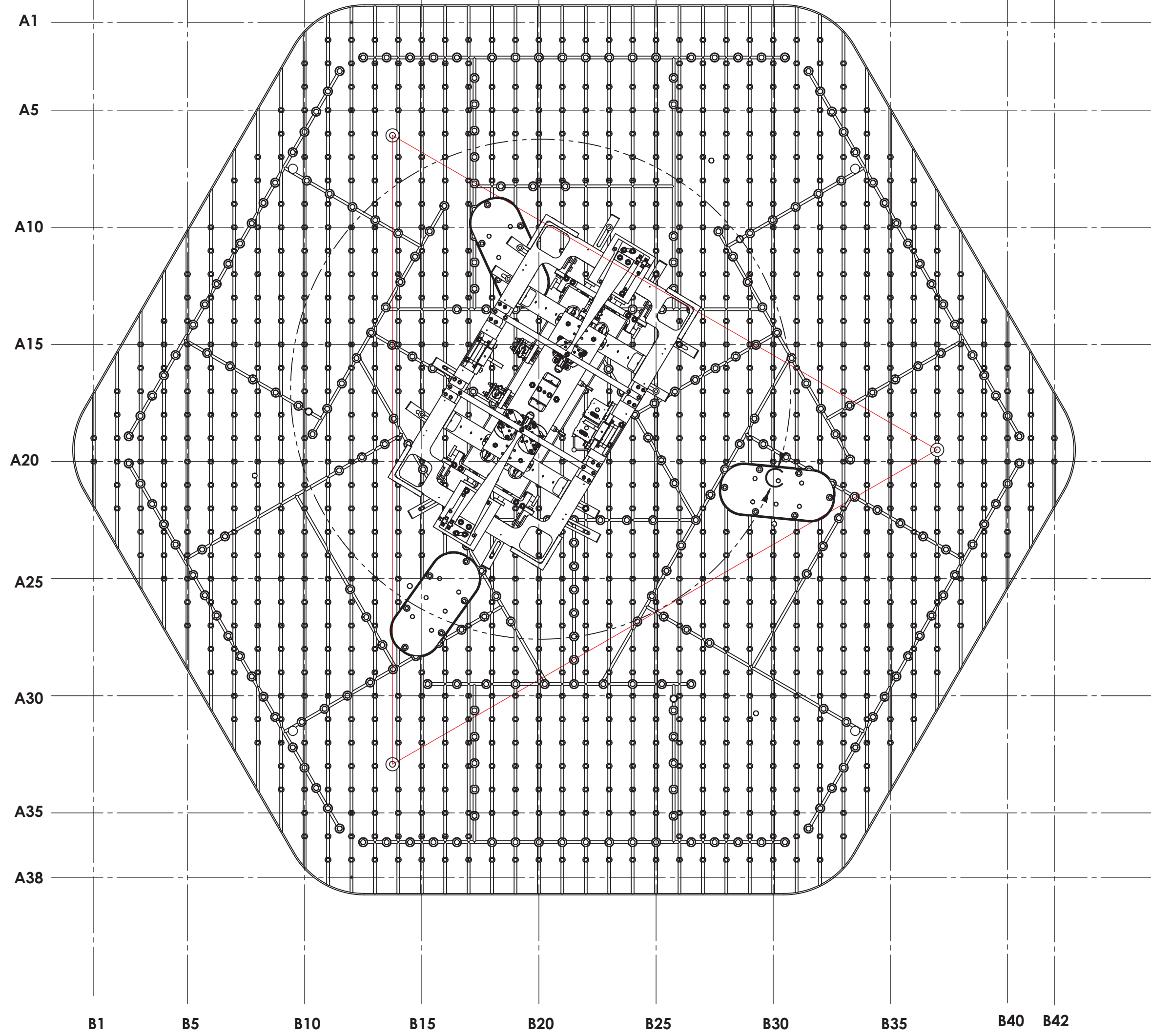
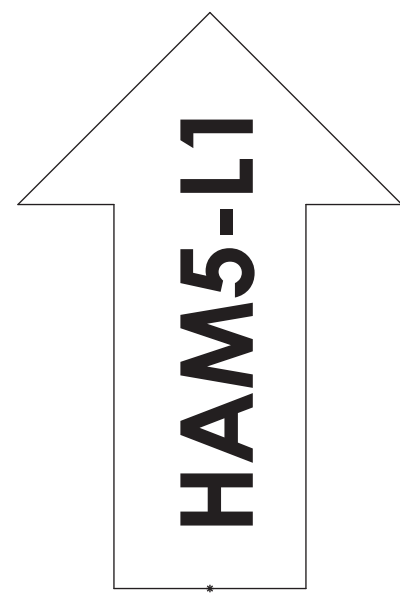


DETAIL B
SCALE 1 : 2

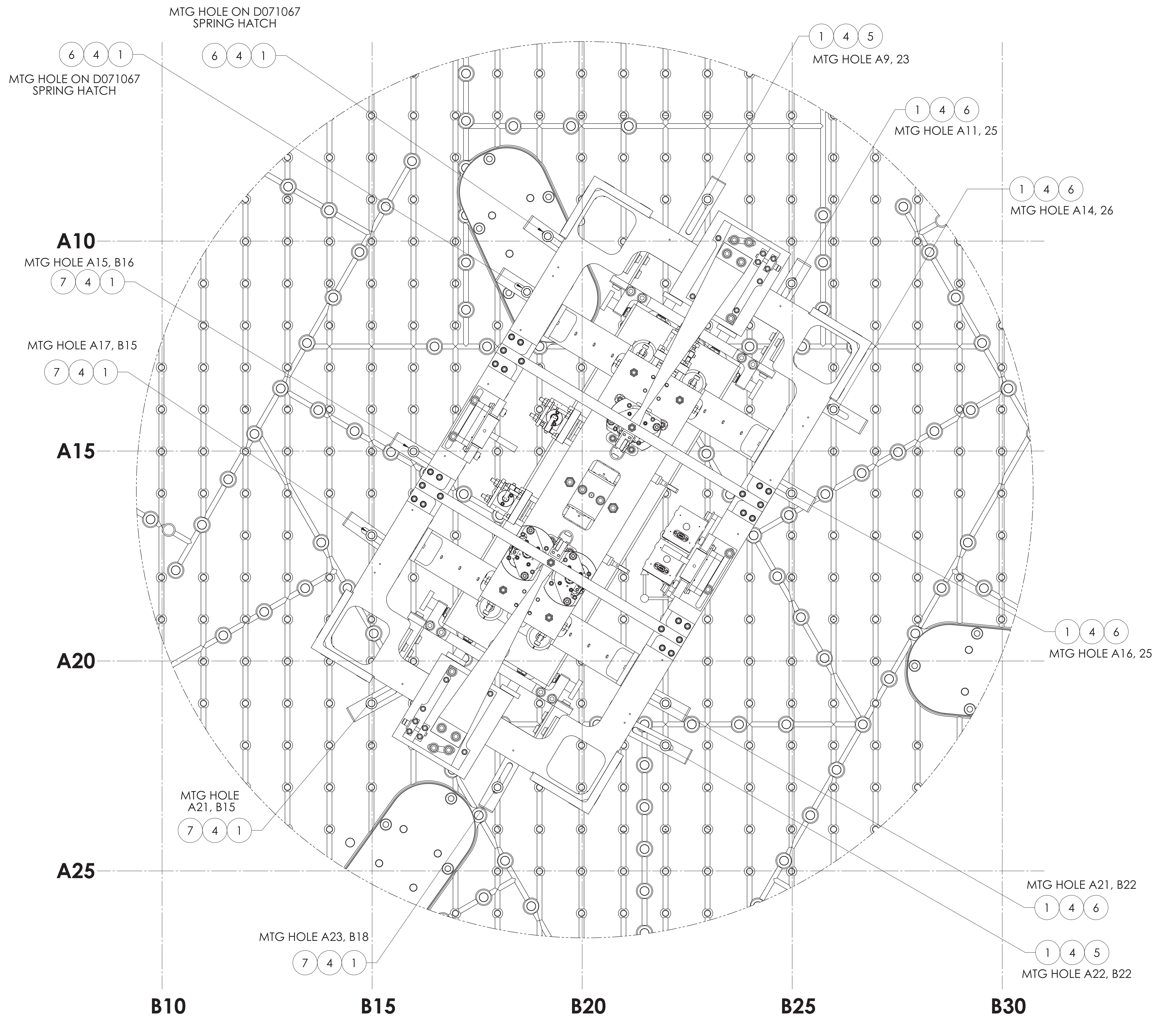
TOP VIEW SHOWING INSTALLATION PLATE LOCATION.
OPTICAL TABLE SHOWN FOR STRUCTURE LOCATION AND ORIENTATION ONLY
(DOG CLAMPS, VIBRATION ABSORBERS & HARDWARE REMOVED FOR CLARITY)

OMC STRUCTURE ALIGNMENT PLATE

D:\30077\AutoCAD\B1300077\11_XE1\acad\CE for Output\Media\Chassis_Plate_Plate_REV_X.031.dwg\DWG_PLOT_MEV_X.030



TOP VIEW

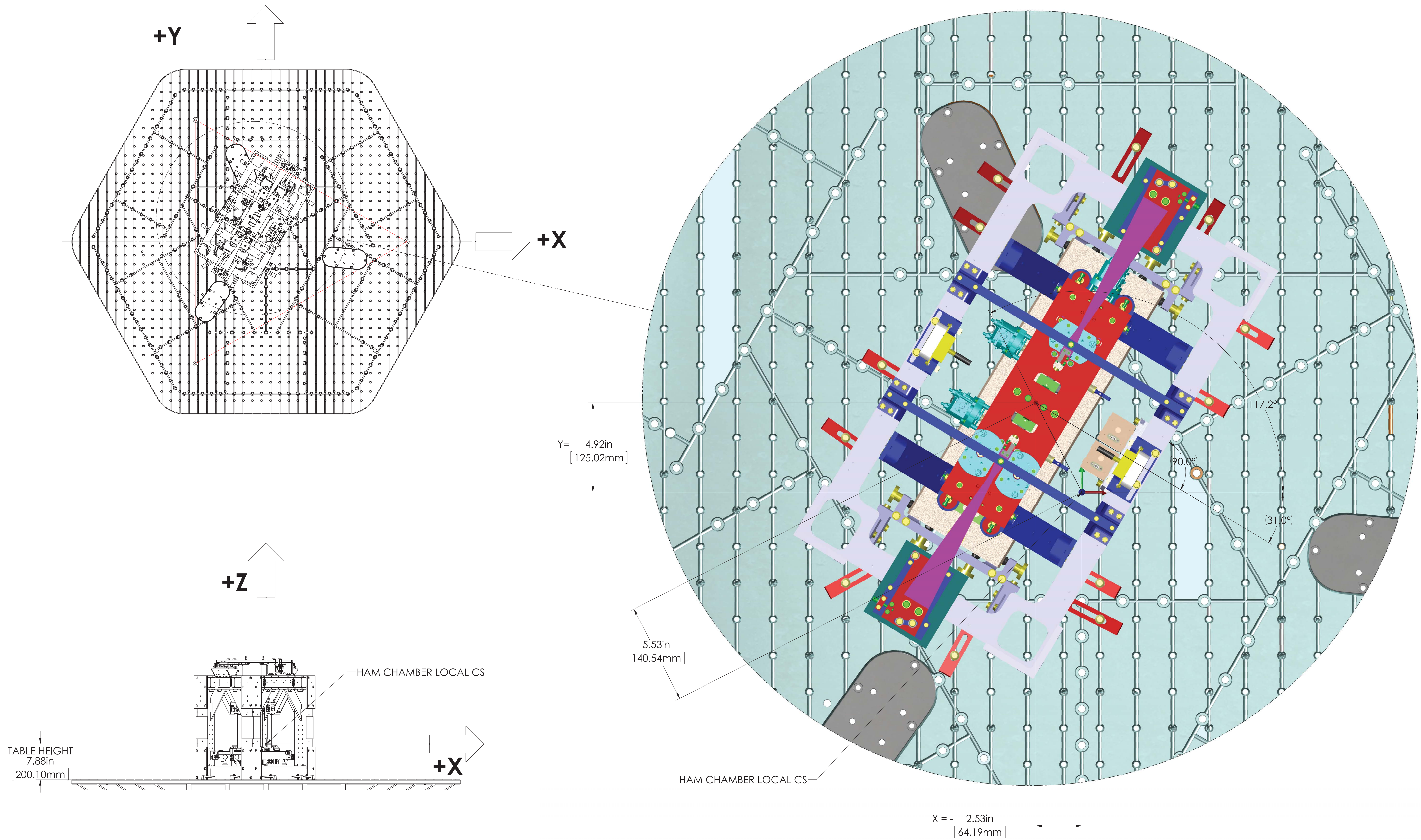


DETAIL C
SCALE 1 : 2

TOP VIEW SHOWING DOG CLAMPS INSTALLATION & LOCATION
OPTICAL TABLE SHOWN FOR STRUCTURE LOCATION AND ORIENTATION,
(VIBRATION ABSORBERS REMOVED FOR CLARITY)

NOTE: non-standard dog clamps (perhaps eligo era) used
during initial install to clamp down the OMC suspension
(PLEASE REFER TO E1500314 FOR DEVIATION REPORT)

OMC STRUCTURE DOG CLAMP INSTALLATION



OMC STRUCTURE LOCAL COORDINATES DEFINITION