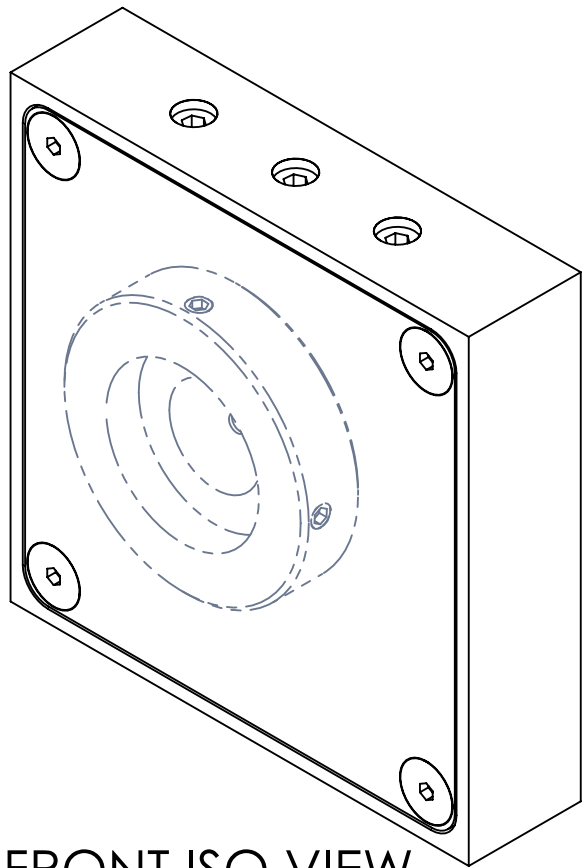


8 7 6 5 4 3 2 1

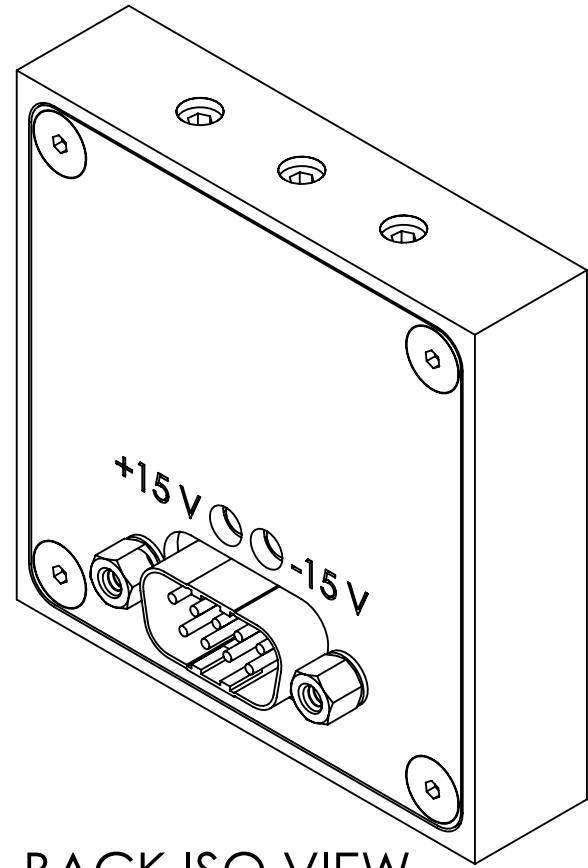
NOTES:

- ① NOTED PARTS INCLUDED FOR REFERENCE ONLY.
 - D1300292-v1 INTEGRATING SPHERE ADAPTER
 - McMASTER-CARR 91217A060 OR EQUIVQLENT, CONE POINT SOCKET SET SCREW, M5 X 0.5 THREAD, 5MM LENGTH
- ② USE ITEM ⑩ TO PLUG UNUSED MOUNTING HOLES IN ITEM ①.

REV.	DATE	DCN #	DRAWING TREE #
v1	12 JUL 2013	-	-
-	-	-	-
-	-	-	-



FRONT ISO VIEW



BACK ISO VIEW

10	92311A189 (McM-Carr) or equiv	SCREW, SOCKET SET, #8-32 UNC-2A X 0.1875 LONG	-	18-8 SSSL	4	4
9	D1300106	aLIGO PCAL PHOTODETECTOR COVER, FRONT	v1	6061-T6 Al	1	1
8	5748270-2 (TE Connectivity)	JACK SOCKET, 4-40, SHORT HEAD	-	ALLOY STEEL ZN-PL	2	2
7	91102A720 (McM-Carr) or equiv	#4 SPLIT LOCK WASHER	-	ALLOY STEEL ZN-PL	2	2
6	91253A106 (McM-Carr) or equiv	SCREW, FLAT HEAD SOCKET CAP, #4-40 UNC-3A X 0.25 LONG	-	ALLOY STEEL BL-OX	8	8
5	D1300102	aLIGO PCAL PHOTODETECTOR COVER, REAR	v1	6061-T6 Al	1	1
4	91255A106 (McM-Carr) or equiv	BUTTON HD SOC SCRW, 4-40 X .25L	-	ALLOY STEEL BL-OX	4	4
3	90945A710 (McM-Carr) or equiv PER NAS 620-C4L	WASHER, FLAT, #4	-	300 SSSL	4	4
2	D1300210	PCAL PHOTODIODE BOARD	v1	N/A	1	1
1	D1300101	aLIGO PCAL PHOTODETECTOR HOUSING	v1	6061-T6 Al	1	1
ITEM NO.	PART NUMBER	DESCRIPTION	REV.	MATERIAL	QTY.	SPARE TOTAL

PARTS LIST

NOTES AND TOLERANCES: (UNLESS OTHERWISE SPECIFIED)

DIMENSIONS ARE IN INCHES

TOLERANCES:
 .XX ±
 .XXX ±
 ANGULAR ± °

MATERIAL	N/A	FINISH	N/A μinch
----------	-----	--------	-----------

LIGO CALIFORNIA INSTITUTE OF TECHNOLOGY
 MASSACHUSETTS INSTITUTE OF TECHNOLOGY

SYSTEM: **ADVANCED LIGO** SUB-SYSTEM: **AOS**

DESIGNER: R. SAVAGE
 DRAFTER: C. CONLEY
 CHECKER: C. CONLEY
 APPROVAL:

DATE: 04 FEB 2013
 DATE: 12 JUL 2013

PART NAME: **aLIGO PCAL PHOTODETECTOR ASSEMBLY**

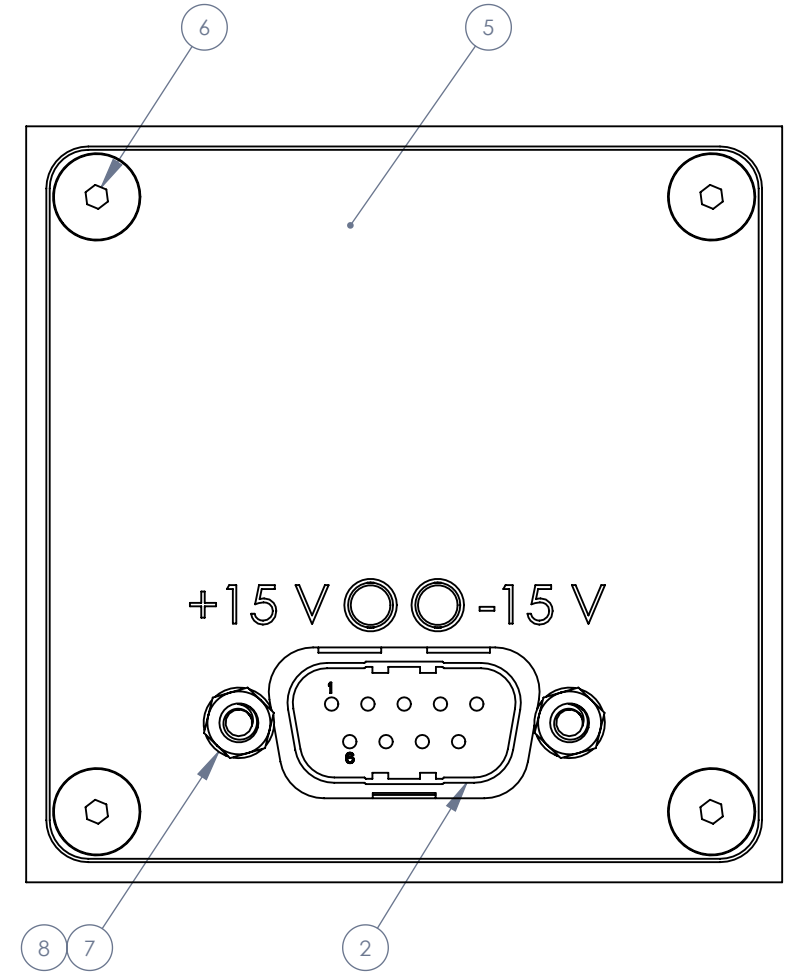
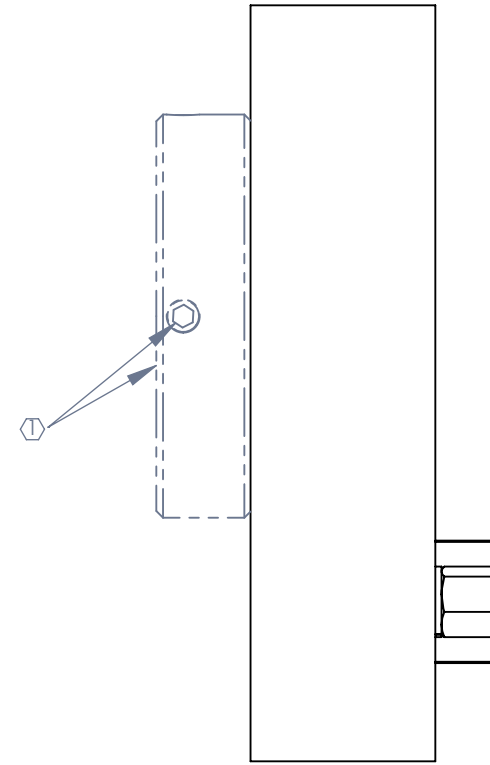
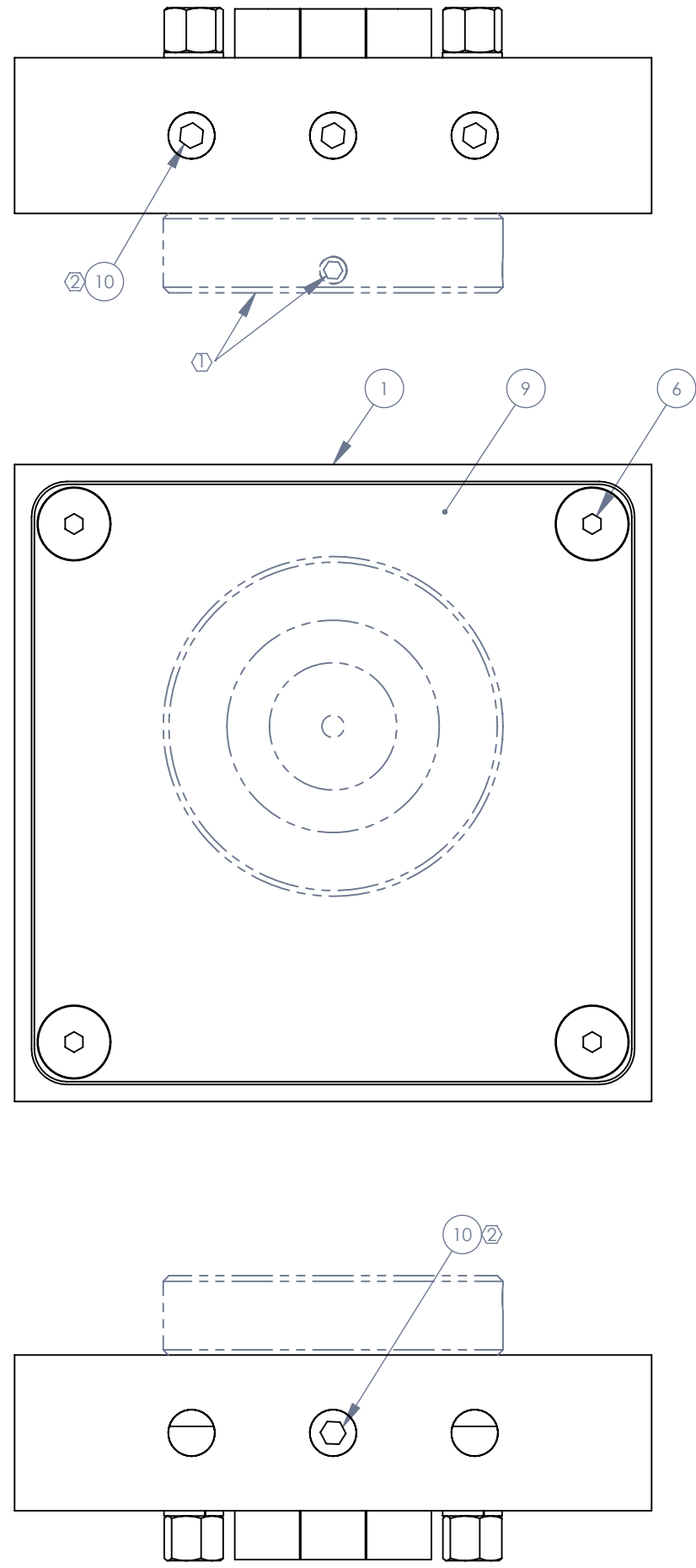
SIZE: **B** DWG. NO.: **D1300103** REV.: **v1**

SCALE: NONE PROJECTION: SHEET 1 OF 4

D1300103 aLIGO Pcal Photodetector Assembly, PART PDM REV: X-040, DRAWING PDM REV: X-014

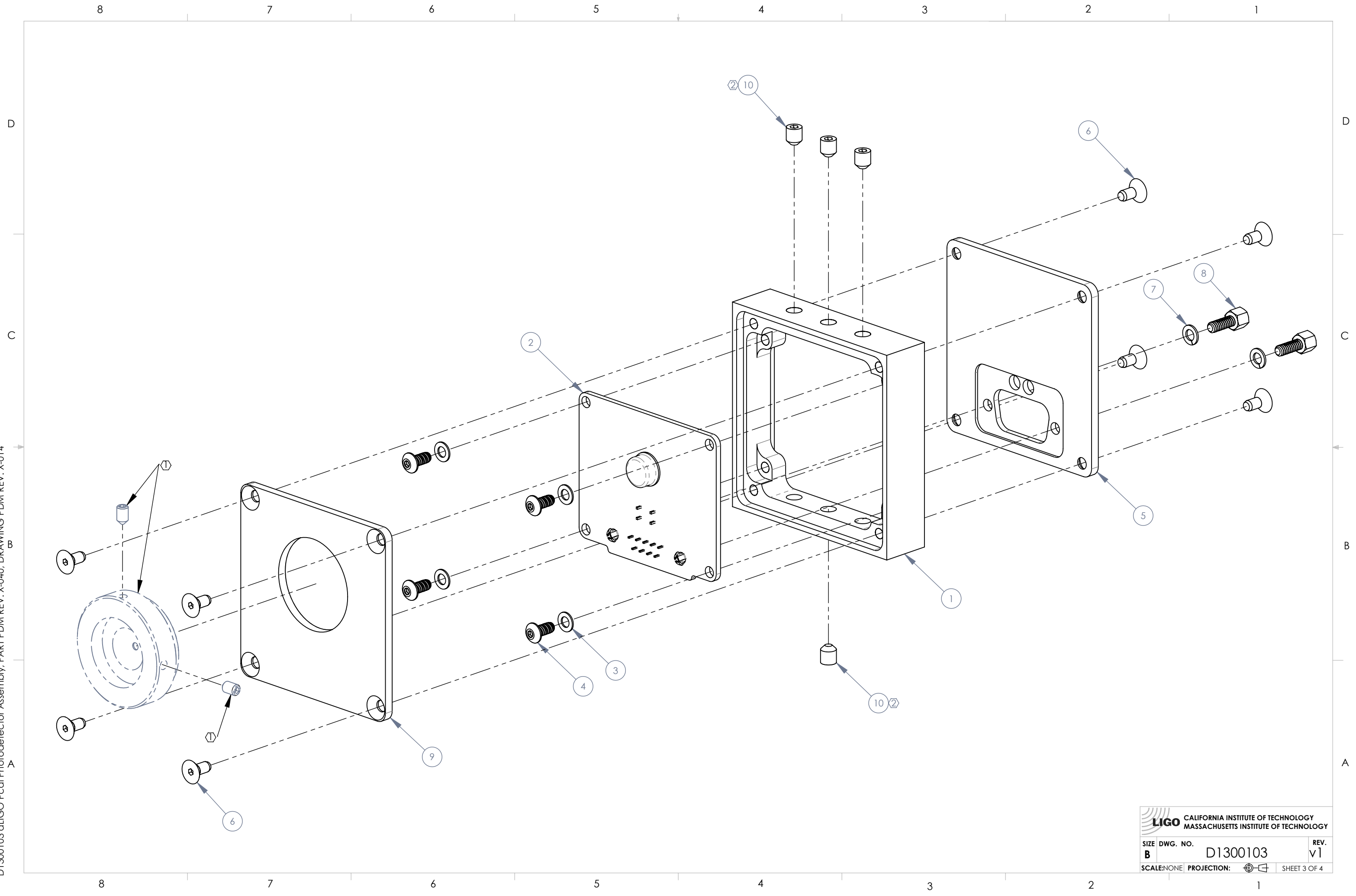
8 7 6 5 4 3 2 1

D1300103 aLIGO Pcal Photodetector Assembly, PART PDM REV: X-040, DRAWING PDM REV: X-014



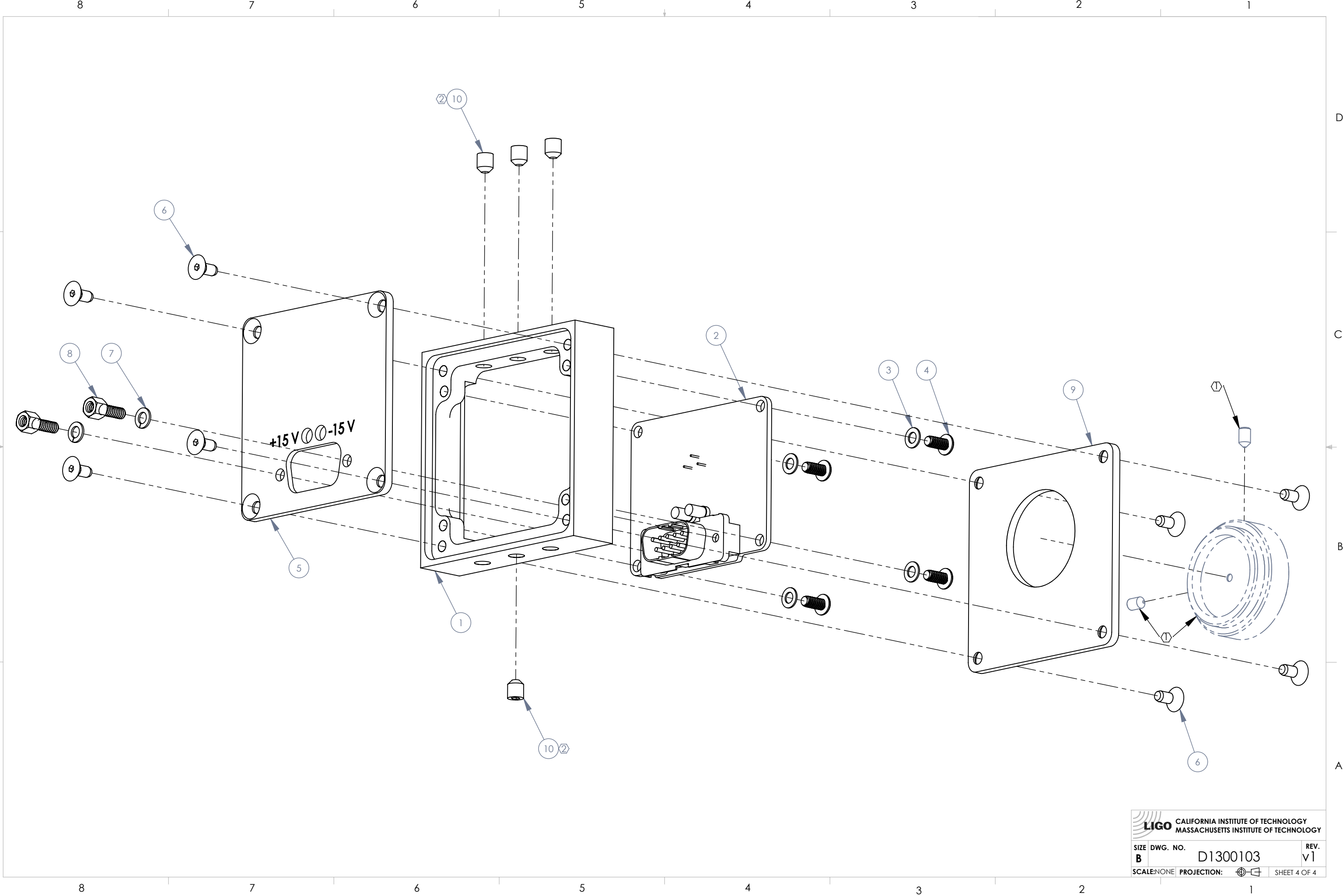
 CALIFORNIA INSTITUTE OF TECHNOLOGY MASSACHUSETTS INSTITUTE OF TECHNOLOGY		
SIZE B	DWG. NO. D1300103	REV. v1
SCALE: NONE	PROJECTION: 	SHEET 2 OF 4


D1300103 aLIGO Pcal Photodetector Assembly, PART PDM REV: X-040, DRAWING PDM REV: X-014



 CALIFORNIA INSTITUTE OF TECHNOLOGY MASSACHUSETTS INSTITUTE OF TECHNOLOGY		
SIZE	DWG. NO.	REV.
B	D1300103	v1
SCALE: NONE	PROJECTION:	SHEET 3 OF 4

D1300103 aLIGO Pcal Photodetector Assembly, PART PDM REV: X-040, DRAWING PDM REV: X-014



 CALIFORNIA INSTITUTE OF TECHNOLOGY MASSACHUSETTS INSTITUTE OF TECHNOLOGY		
SIZE	DWG. NO.	REV.
B	D1300103	v1
SCALE: NONE	PROJECTION:	SHEET 4 OF 4