

**NOTES CONTINUED:**

④ SCRIBE, ENGRAVE (A VIBRATORY TOOL MAY BE USED), LASER MARK OR MECHANICALLY STAMP (NO INKS OR DYES) DRAWING PART NUMBER, REVISION (AND DASH OR 'TYPE' NUMBER IF APPLICABLE) ON NOTED SURFACE OF PART FOLLOWED ON THE NEXT LINE WITH A THREE DIGIT SERIAL NUMBER. SERIAL NUMBERS START AT 001 FOR THE FIRST ARTICLE AND PROCEED CONSECUTIVELY. USE MINIMUM 0.12" HIGH CHARACTERS, UNLESS THE SIZE OF THE PART DICTATES SMALLER CHARACTERS.  
EXAMPLE: D1300182-v3, TYPE-01, S/N 001

5. WEIGHT: 5.1 LB [2.3 KG].

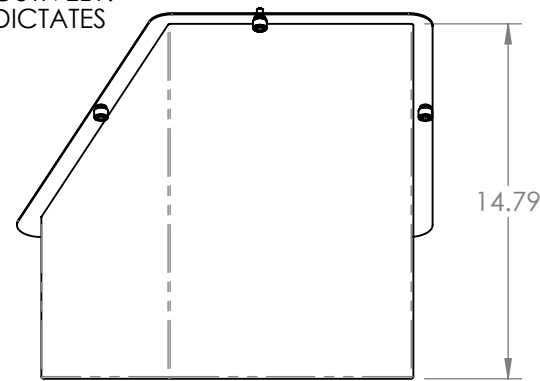
6. MAXIMUM BEND RADIUS: 0.04".

⑦ POWDER COAT ALL SHEET METAL SURFACES (EXCEPT PER ⑧) WITH BLACK SEMI-GLOSS WRINKLE FINISH.

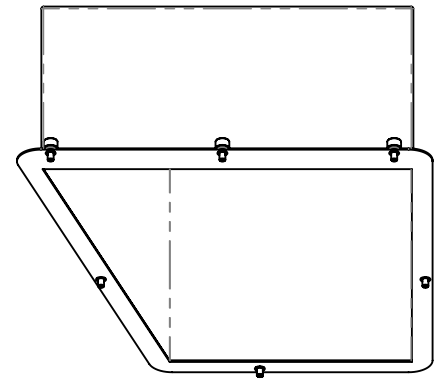
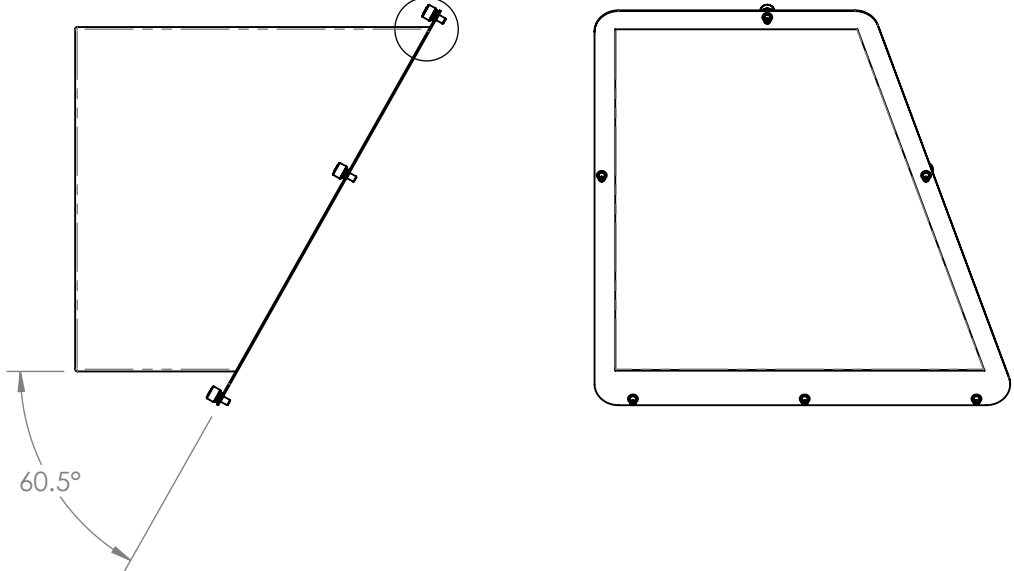
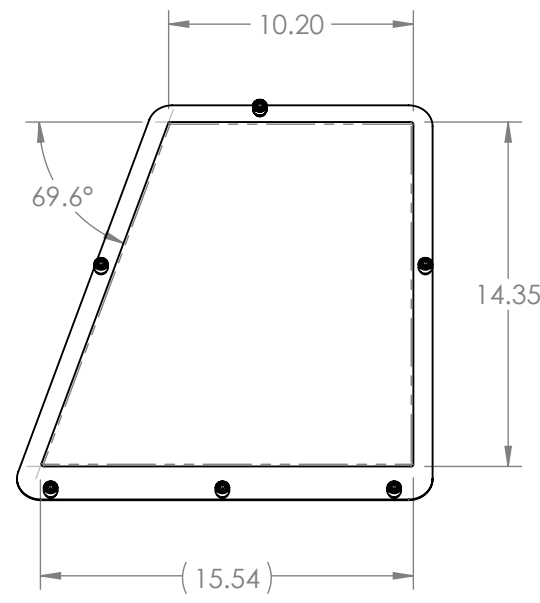
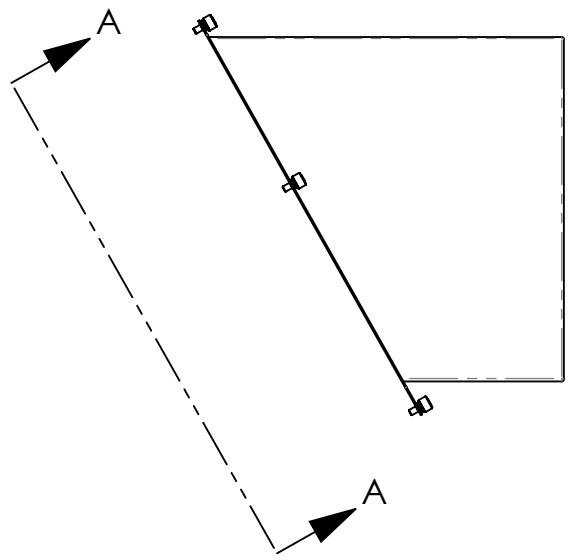
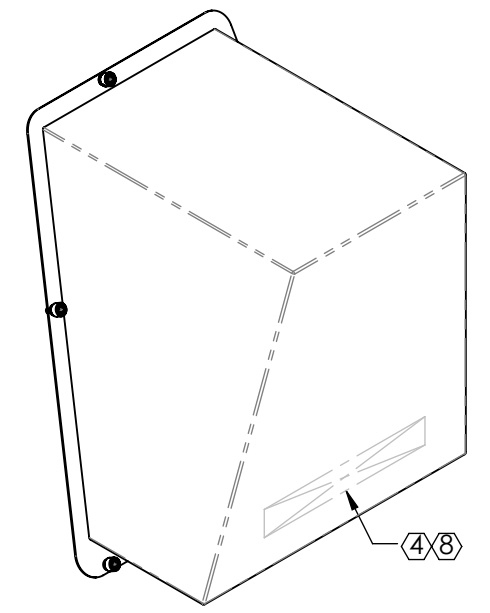
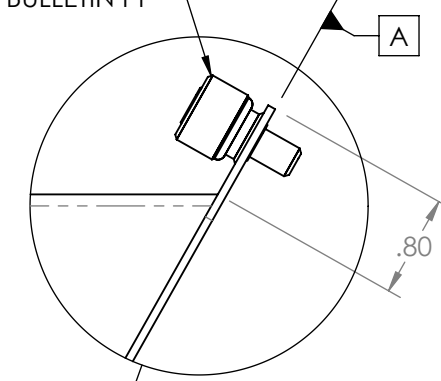
⑧ MASK THE SCRIBED AREA FROM POWDER COAT.

9. PART MAY BE FABRICATED AS TWO PIECES TO BE ASSEMBLED WITH #8-32 UNC SCREWS. USE CLS-832-2 PEM NUTS AND  $\phi$ .194 CLEARANCE HOLES.

REV.	DATE	DCN #	DRAWING TREE #
v1	11 APR 2013	-	-
v2	08 JUN 2013	-	-
v3	10 JUN 2013	-	-



6X PEM PF11MF-0420-2 BL  
PREP & INSTALL PER PEM BULLETIN PF



**-01 DETAILED, SHEETS 1 & 2**  
**-02 OPPOSITE, SEE SHEET 3**

D1300182 aLIGO PCaI Receiver Enclosure, PART PDM REV: X-049, DRAWING PDM REV: X-008

**NOTES AND TOLERANCES: (UNLESS OTHERWISE SPECIFIED)**

DIMENSIONS ARE IN INCHES

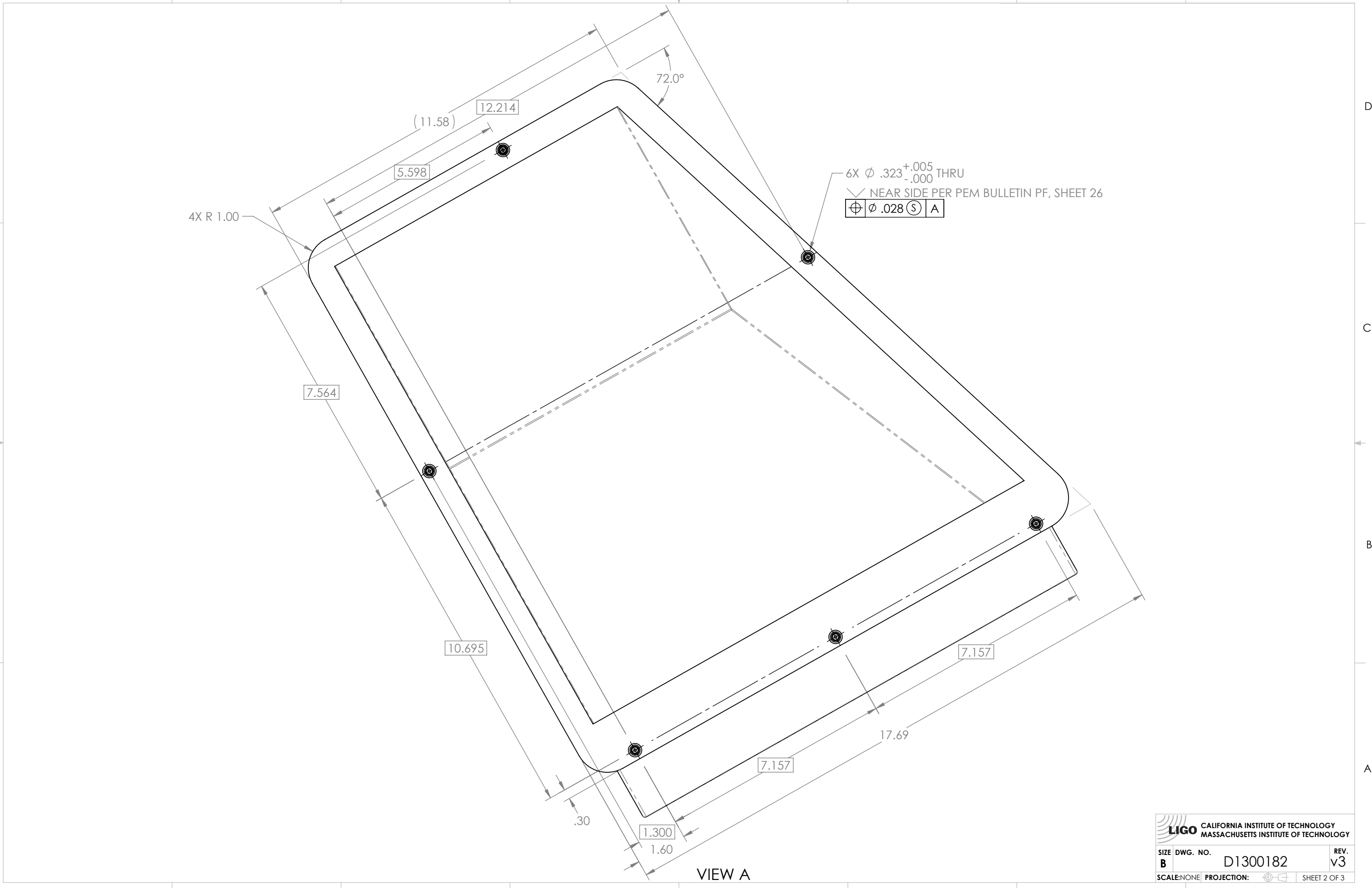
TOLERANCES:  
.XX ± .02  
.XXX ± .005  
ANGULAR ± 1.0°

MATERIAL: 5052-H32, 0.063" SHEET

FINISH: ⑦

CALIFORNIA INSTITUTE OF TECHNOLOGY MASSACHUSETTS INSTITUTE OF TECHNOLOGY		PART NAME	
SYSTEM: ADVANCED LIGO SUB-SYSTEM: AOS		aLIGO PCAL RECEIVER ENCLOSURE	
DESIGNER	R. SAVAGE	11 MAR 2013	SIZE DWG. NO.
DRAFTER	C. CONLEY	11 APR 2013	<b>B</b>
CHECKER			<b>D1300182</b>
APPROVAL			REV. <b>v3</b>
NEXT ASSY: D1001325-02 D1001330-02		SCALE: NONE PROJECTION:	
		SHEET 1 OF 3	

D1300182 dLIGO PCdI Receiver Enclosure, PART PDM REV: X-049, DRAWING-PDM REV: X-008



4X R 1.00

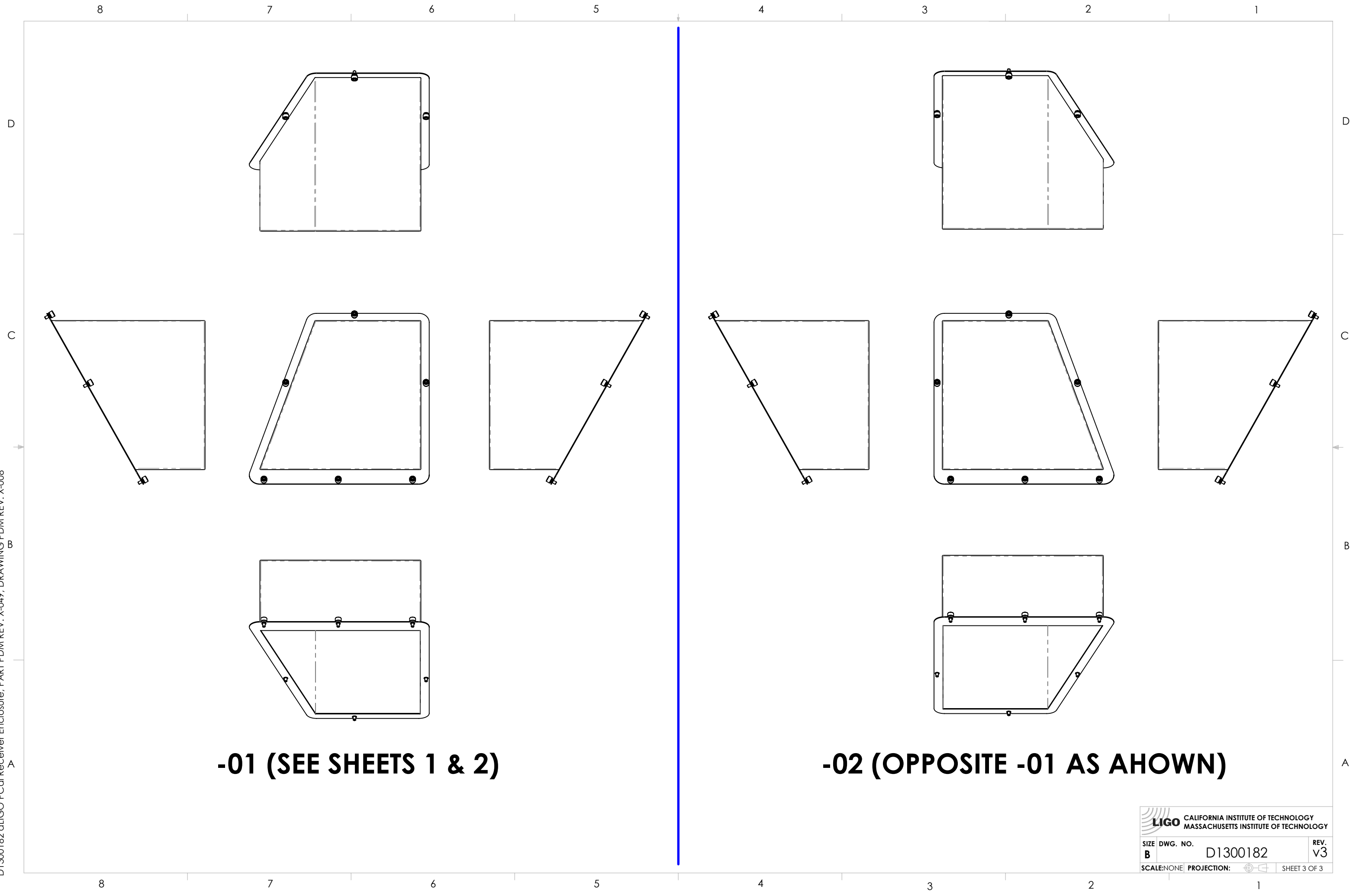
6X  $\varnothing$  .323<sup>+.005</sup><sub>-.000</sub> THRU  
 NEAR SIDE PER PEM BULLETIN PF, SHEET 26  
 $\varnothing$  .028

VIEW A

**LIGO** CALIFORNIA INSTITUTE OF TECHNOLOGY  
 MASSACHUSETTS INSTITUTE OF TECHNOLOGY


SIZE	DWG. NO.	REV.
B	D1300182	v3
SCALE: NONE	PROJECTION:	SHEET 2 OF 3

D1300182 dLIGO PCdI Receiver Enclosure, PART PDM REV: X-049, DRAWING PDM REV: X-008



**-01 (SEE SHEETS 1 & 2)**

**-02 (OPPOSITE -01 AS SHOWN)**

 <b>CALIFORNIA INSTITUTE OF TECHNOLOGY</b> <b>MASSACHUSETTS INSTITUTE OF TECHNOLOGY</b>		
SIZE	DWG. NO.	REV.
B	D1300182	v3
SCALE: NONE	PROJECTION:	SHEET 3 OF 3