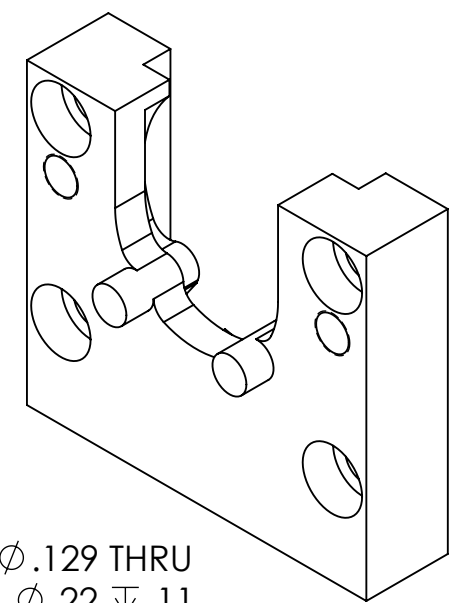
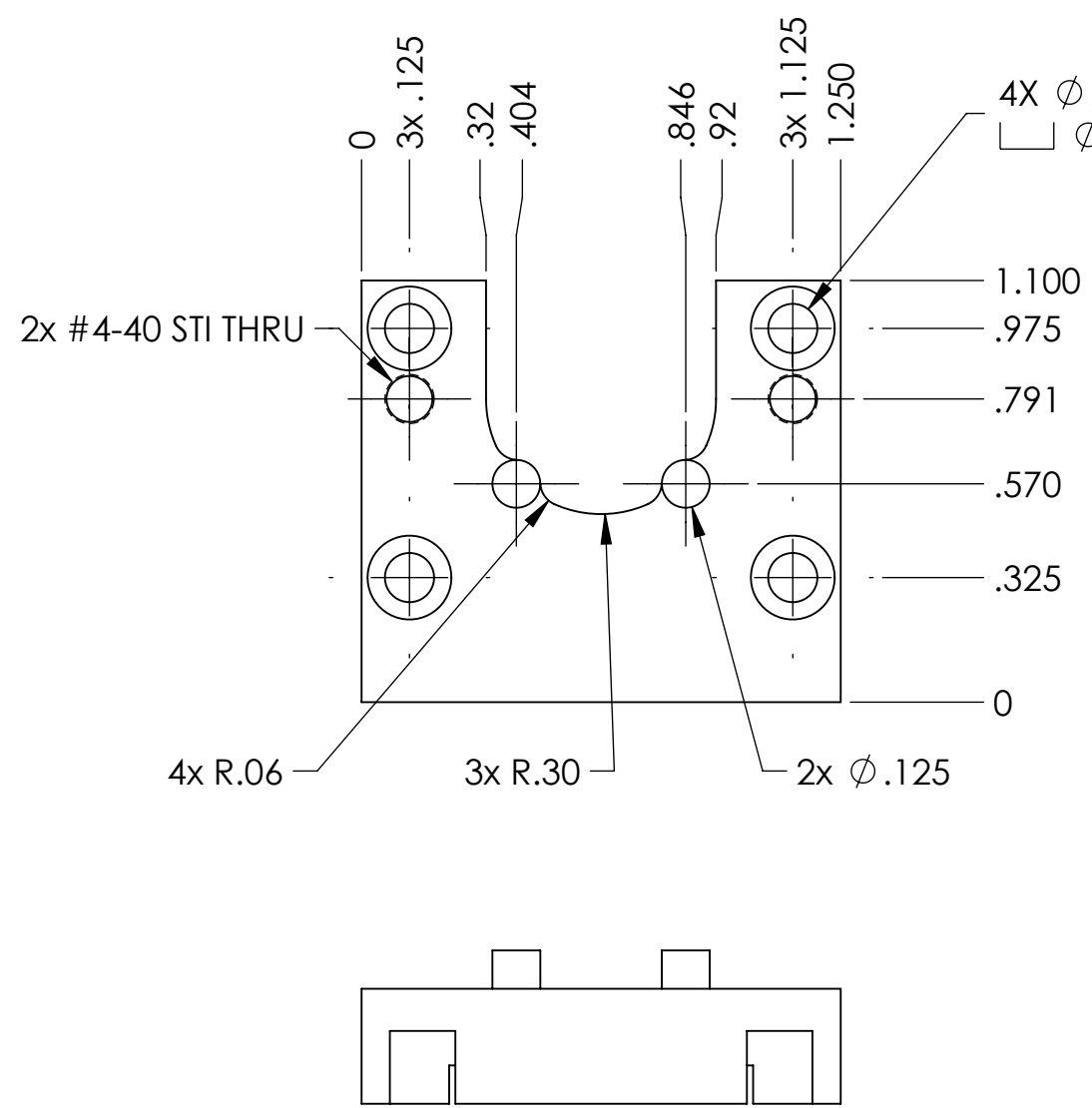
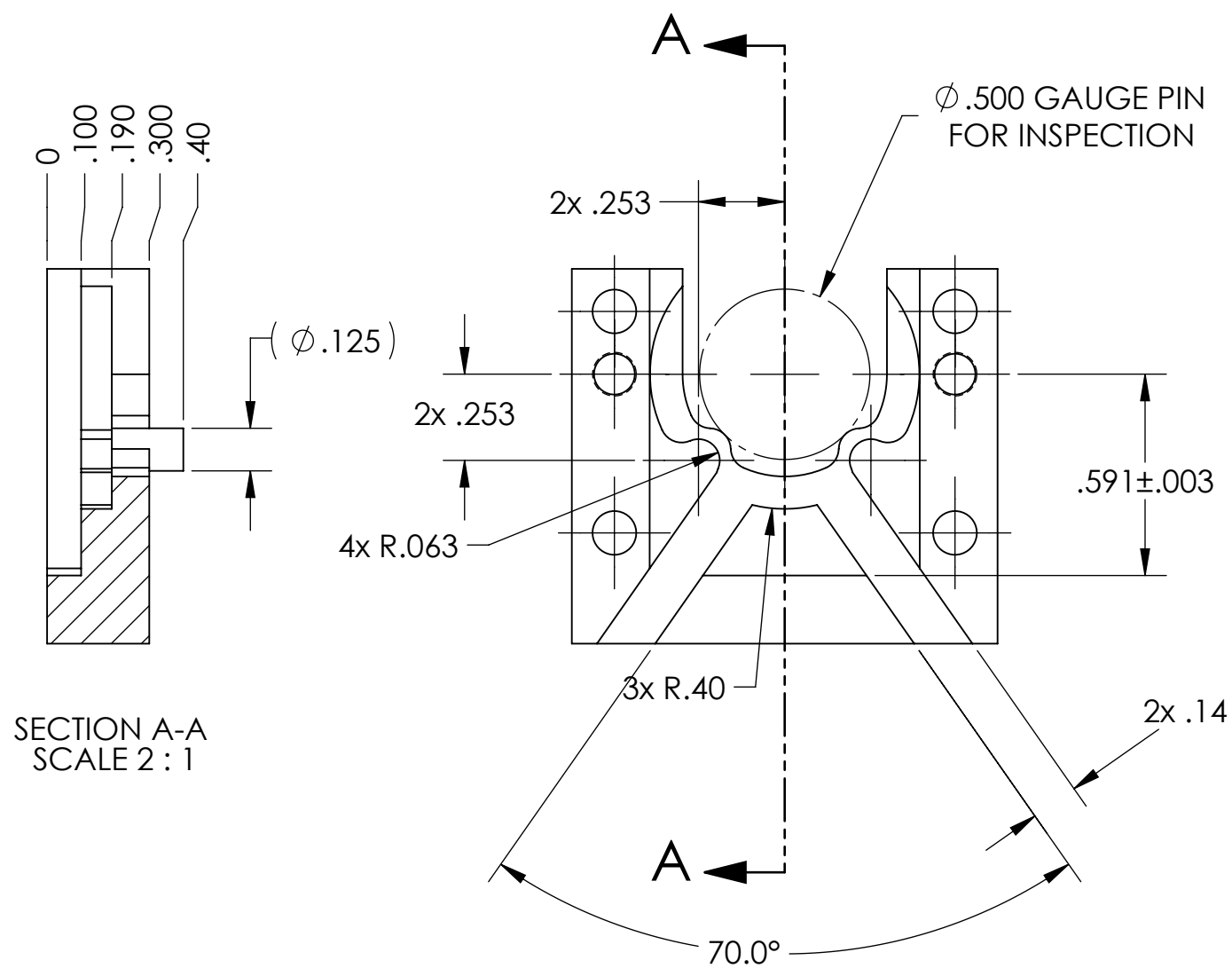


D1300186 aLIGO OMC CURVED MIRROR BONDING FIXTURE FRONT, PART PDM REV: X-001, DRAWING PDM REV: X-001

**NOTES CONTINUED:**  
 5. SCRIBE, ENGRAVE, OR MECHANICALLY STAMP (NO INKS OR DYES) DRAWING PART NUMBER, REVISION (AND VARIANT OR "TYPE" IF APPLICABLE) ON NOTED SURFACE OF PART FOLLOWED ON THE NEXT LINE WITH A THREE DIGIT SERIAL NUMBER. SERIAL NUMBERS START AT 001 FOR THE FIRST ARTICLE AND PROCEED CONSECUTIVELY. USE MINIMUM 0.12" HIGH CHARACTERS, UNLESS THE SIZE OF THE PART DICTATES SMALLER CHARACTERS. A VIBRATORY TOOL MAY BE USED.  
 EXAMPLE: DXXXXXX-VY, TYPE-XX, S/N XXX

6. APPROXIMATE WEIGHT = 4.0 g.  
 7. MACHINE ALL SURFACES TO REMOVE OXIDES AND MILL FINISH. USE OF ABRASIVE REMOVAL TECHNIQUES IS NOT ALLOWED.  
 8. ALL PARTS SHALL BE MANUFACTURED IN ACCORDANCE WITH LIGO SPECIFICATION E0900364.  
 9. ALL HELI-COIL HOLES TO BE PREPARED ACCORDING TO EMHART HELI-COIL PRODUCT CATALOG, HC2000, REV 4  
 10. ALL HELI-COIL INSERTS TO BE INSTALLED BY LIGO PERSONNEL. AFTER DELIVERY OF FINISHED PARTS, USE NITRONIC 60 THREADED INSERTS.

REV.	DATE	DCN #	DRAWING TREE #
v1	1 MAR 2013	E1300158-x0	-
-	-	-	-
-	-	-	-



**NOTES AND TOLERANCES: (UNLESS OTHERWISE SPECIFIED)**

- INTERPRET DRAWING PER ASME Y14.5-1994.
- REMOVE ALL SHARP EDGES .005-.015
- DO NOT SCALE FROM DRAWING.
- MACHINE PEEK PARTS DRY (NO COOLANT)

DIMENSIONS ARE IN	
TOLERANCES:	
.XX ± .01	
.XXX ± .005	
ANGULAR ± 1°	
MATERIAL	PEEK 450G
FINISH	63 μinch

**LIGO** CALIFORNIA INSTITUTE OF TECHNOLOGY  
 MASSACHUSETTS INSTITUTE OF TECHNOLOGY

SYSTEM: **ADVANCED LIGO** SUB-SYSTEM: **ISC**

NEXT ASSY: **D1300185**

PART NAME		aLIGO OMC CURVED MIRROR BONDING FIXTURE FRONT	
DESIGNER	J.LEWIS	1 MAR 2013	SIZE DWG. NO.
DRAFTER	J.LEWIS	1 MAR 2013	<b>B</b>
CHECKER			<b>D1300186</b>
APPROVAL			REV. <b>v1</b>
SCALE: 2:1		PROJECTION:  SHEET 1 OF 1	