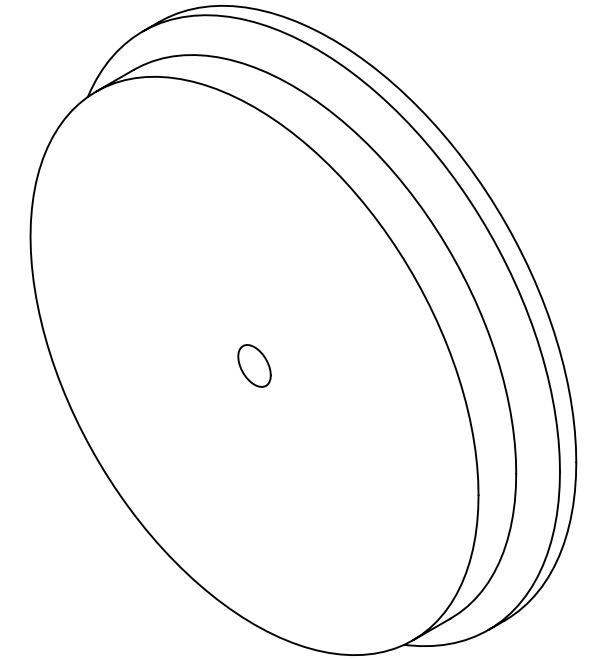
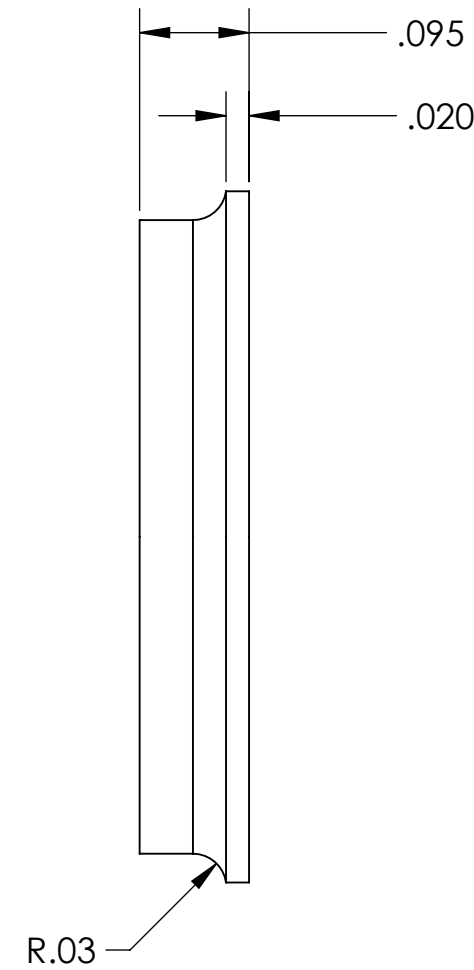
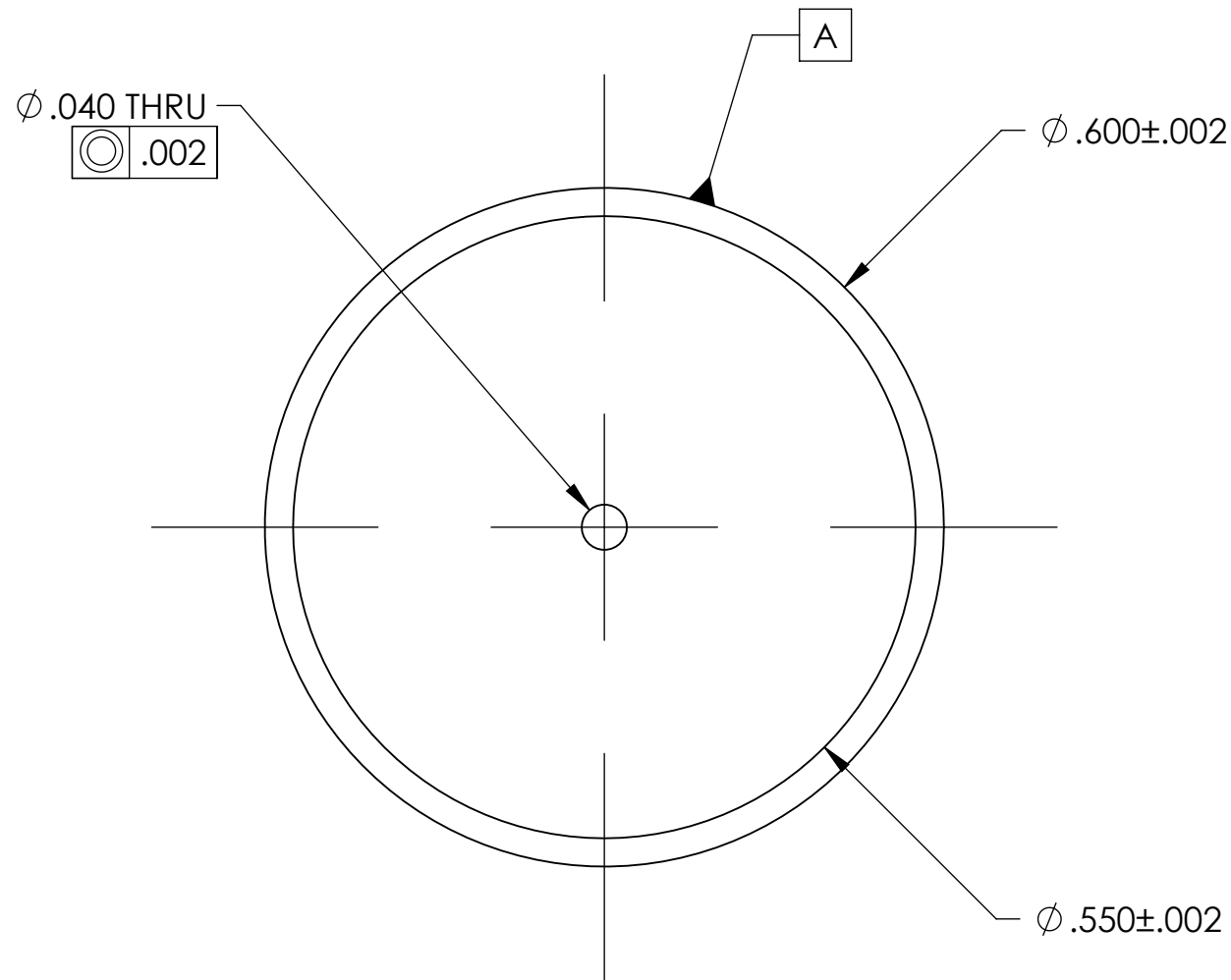


D1300201 aLIGO OMC QPD ALIGNMENT DISK, PART PDM REV: X-000, DRAWING PDM REV: X-000

- NOTES CONTINUED:**
- BAG AND TAG WITH PART AND SERIAL NUMBER
 - APPROXIMATE WEIGHT = 1.0 g.
 - MACHINE ALL SURFACES TO REMOVE OXIDES AND MILL FINISH. USE OF ABRASIVE REMOVAL TECHNIQUES IS NOT ALLOWED.
 - ALL PARTS SHALL BE MANUFACTURED IN ACCORDANCE WITH LIGO SPECIFICATION E0900364.

REV.	DATE	DCN #	DRAWING TREE #
v1	5 MAR 2013	E1300163-x0	-
-	-	-	-
-	-	-	-



NOTES AND TOLERANCES: (UNLESS OTHERWISE SPECIFIED)				LIGO CALIFORNIA INSTITUTE OF TECHNOLOGY MASSACHUSETTS INSTITUTE OF TECHNOLOGY		PART NAME	
DIMENSIONS ARE IN TOLERANCES: .XX ± .01 .XXX ± .005 ANGULAR ± 1°				1. INTERPRET DRAWING PER ASME Y14.5-1994. 2. REMOVE ALL SHARP EDGES .005-.015 3. DO NOT SCALE FROM DRAWING. 4. ALL MACHINING FLUIDS MUST BE FULLY SYNTHETIC, FULLY WATER SOLUBLE AND FREE OF SULFUR, SILICONE, AND CHLORINE.		aLIGO OMC QPD ALIGNMENT DISK	
						SYSTEM: ADVANCED LIGO SUB-SYSTEM: ISC	
MATERIAL: 6061-T6		FINISH: 63 μinch		NEXT ASSY: (D1201279)		SCALE: 6:1 PROJECTION: SHEET 1 OF 1	