

8

7

6

5

4

3

2

1

NOTES CONTINUED:

④ SCRIBE, ENGRAVE (A VIBRATORY TOOL MAY BE USED), LASER MARK OR MECHANICALLY STAMP (NO INKS OR DYES) DRAWING PART NUMBER, REVISION (AND DASH OR 'TYPE' NUMBER IF APPLICABLE) ON NOTED SURFACE OF PART FOLLOWED ON THE NEXT LINE WITH A THREE DIGIT SERIAL NUMBER. SERIAL NUMBERS START AT 001 FOR THE FIRST ARTICLE AND PROCEED CONSECUTIVELY. USE MINIMUM 0.12" HIGH CHARACTERS, UNLESS THE SIZE OF THE PART DICTATES SMALLER CHARACTERS.
EXAMPLE: D1300207-v3, TYPE-01, S/N 001

5. WEIGHT: 4.4 LB [2.0 KG].

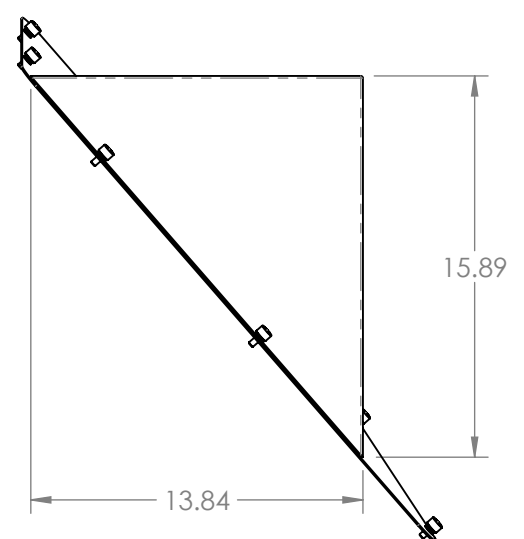
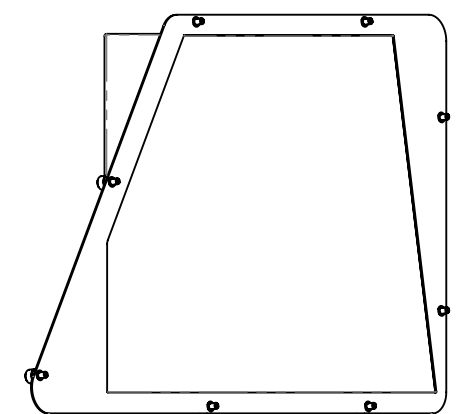
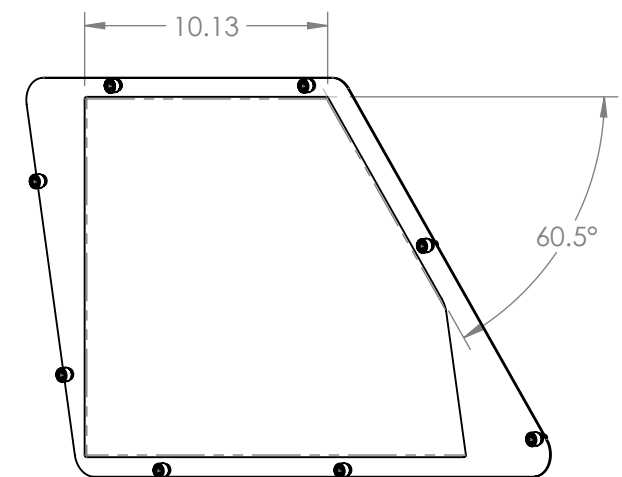
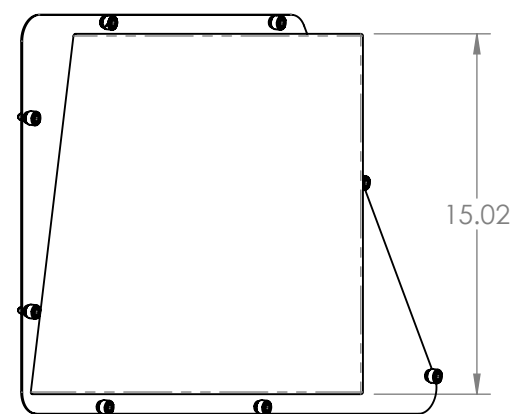
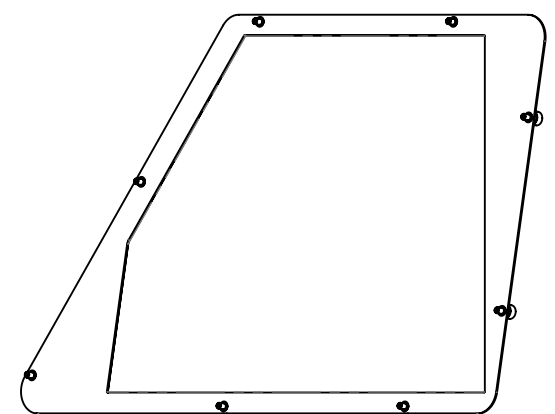
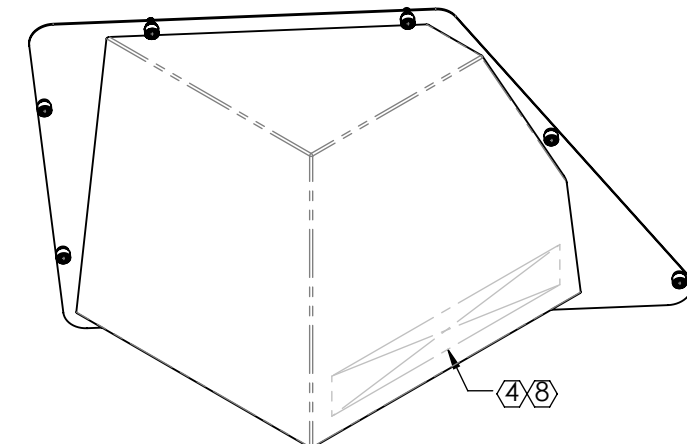
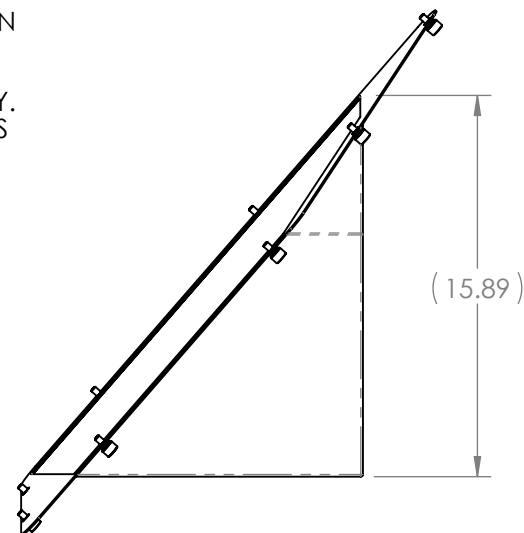
6. MAXIMUM BEND RADIUS: 0.04".

⑦ POWDER COAT ALL SHEET METAL SURFACES (EXCEPT PER ⑧) WITH BLACK SEMI-GLOSS WRINKLE FINISH.

⑧ MASK THE SCRIBED AREA FROM POWDER COAT.

9. PART MAY BE FABRICATED AS TWO PIECES TO BE ASSEMBLED WITH #8-32 UNC SCREWS. USE CLS-832-2 PEM NUTS AND ϕ .194 CLEARANCE HOLES.

REV.	DATE	DCN #	DRAWING TREE #
v1	11 APR 2013	-	-
v2	08 JUN 2013	-	-
v3	10 JUN 2013	-	-



-01 DETAILED, SHEETS 1-3
-02 OPPOSITE, SEE SHEET 4

D1300207 aLIGO PCal Receiver Enclosure, PART PDM REV: X-041, DRAWING PDM REV: X-015

NOTES AND TOLERANCES: (UNLESS OTHERWISE SPECIFIED)

1. INTERPRET DRAWING PER ASME Y14.5-1994.
 2. BREAK ALL SHARP EDGES, .02 MAX.
 3. DO NOT SCALE FROM DRAWING.

DIMENSIONS ARE IN INCHES

TOLERANCES:
 .XX ± .02
 .XXX ± .005

ANGULAR ± 1.0°

CALIFORNIA INSTITUTE OF TECHNOLOGY MASSACHUSETTS INSTITUTE OF TECHNOLOGY		PART NAME	
SYSTEM	SUB-SYSTEM	DESIGNER	REV.
ADVANCED LIGO	AOS	R. SAVAGE	11 MAR 2013
CHECKER	APPROVAL	C. CONLEY	11 APR 2013
NEXT ASSY		SIZE DWG. NO.	
D1001325-02 D1001330-02		B D1300207	

PART NAME		aLIGO PCAL RECEIVER ENCLOSURE	
DESIGNER	REV.	SIZE DWG. NO.	REV.
R. SAVAGE	11 MAR 2013	B D1300207	v3
C. CONLEY	11 APR 2013	SCALE: NONE PROJECTION:	
		SHEET 1 OF 4	

8

7

6

5

4

3

2

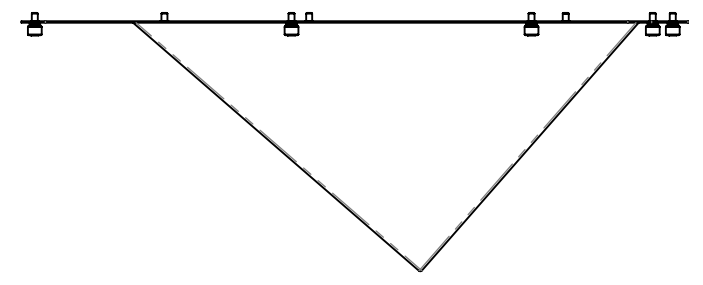
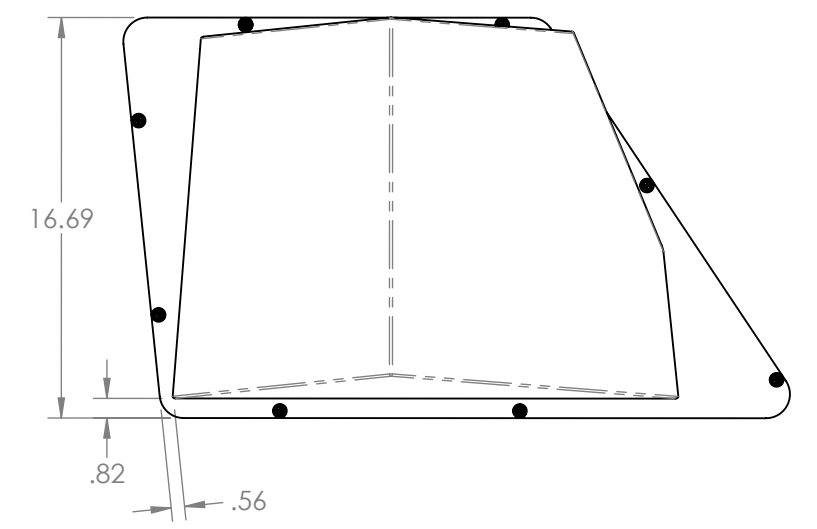
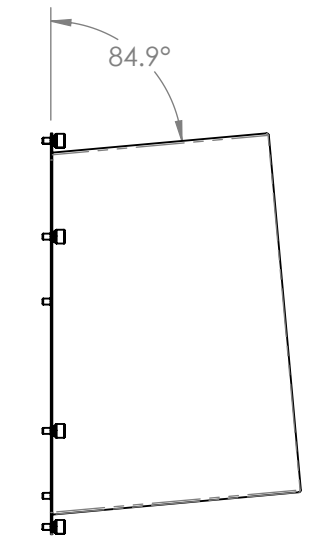
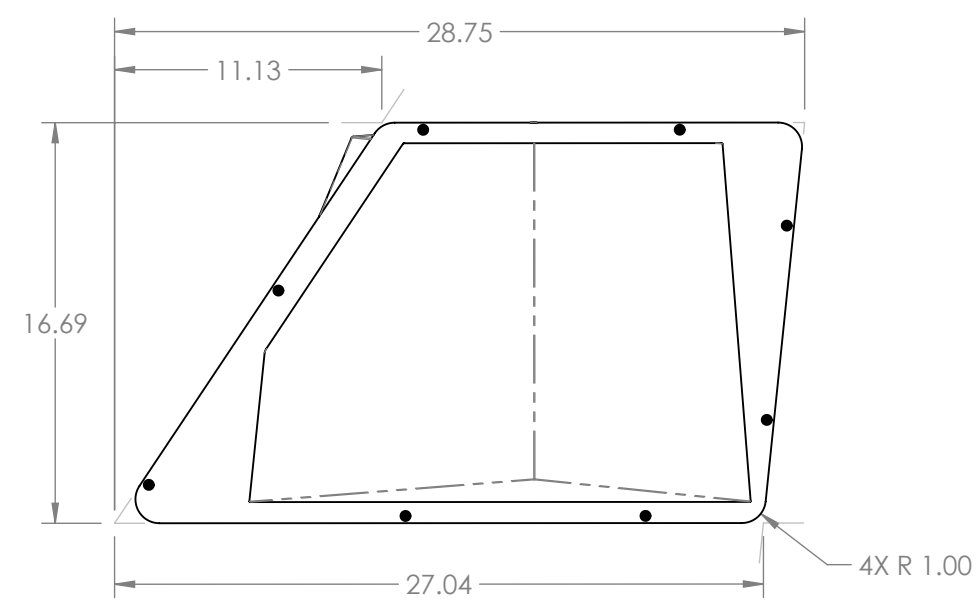
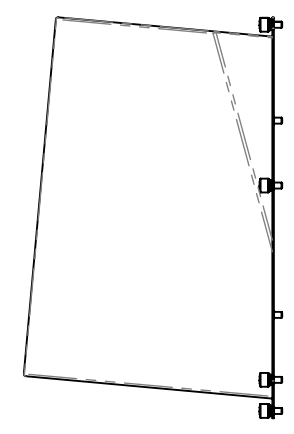
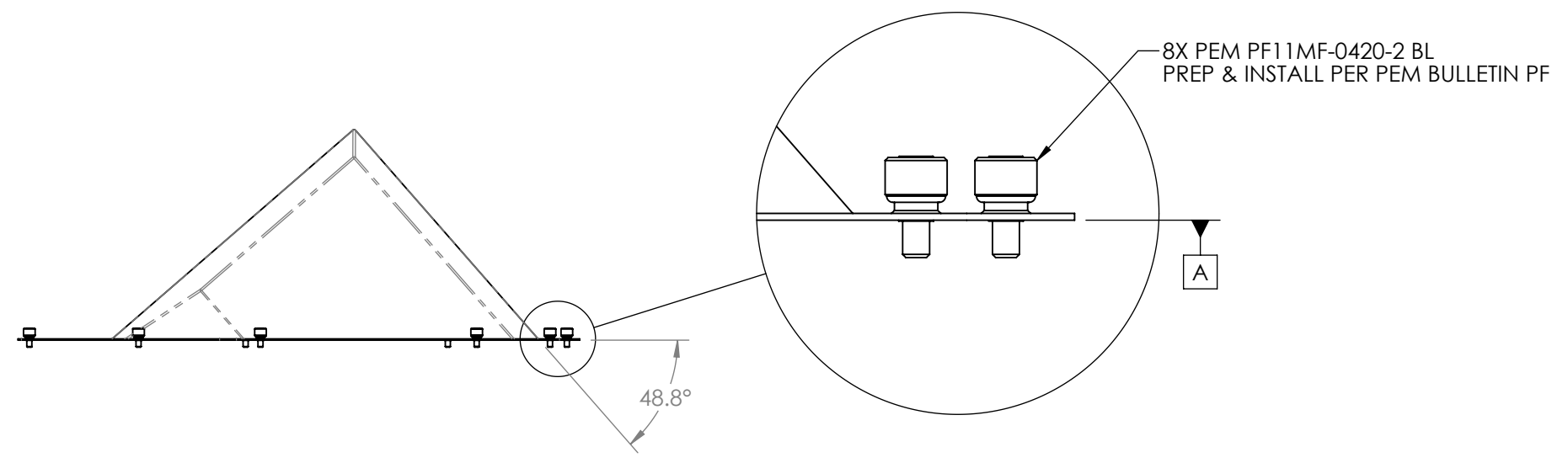
1

D1300207 dLIGO PCdI Receiver Enclosure, PART PDM REV: X-041, DRAWING-PDM REV: X-015

8 7 6 5 4 3 2 1

D
C
B
A

D
C
B
A

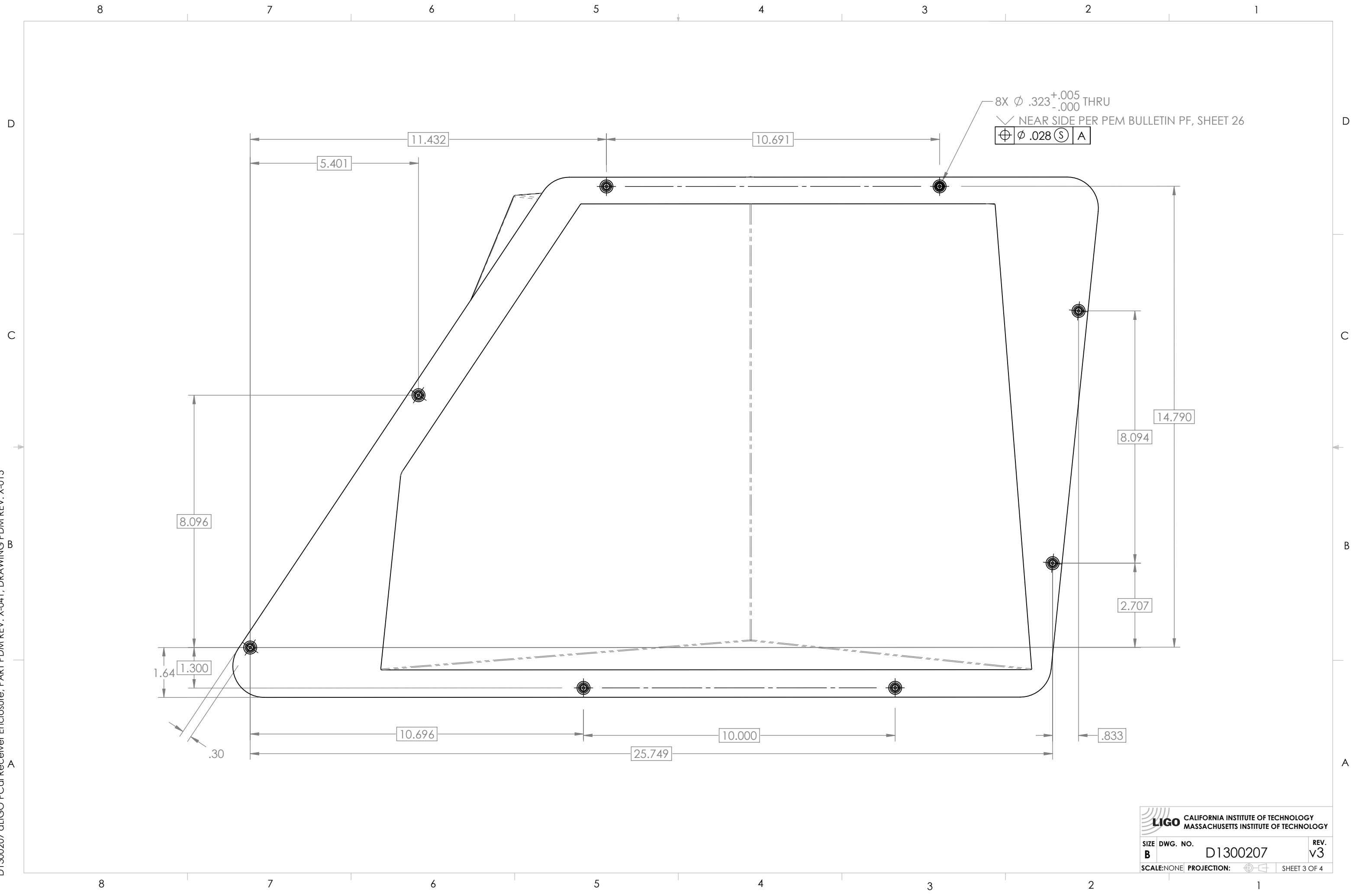


8 7 6 5 4 3 2 1

LIGO CALIFORNIA INSTITUTE OF TECHNOLOGY
MASSACHUSETTS INSTITUTE OF TECHNOLOGY

SIZE	DWG. NO.	REV.
B	D1300207	v3
SCALE: NONE		PROJECTION:
		SHEET 2 OF 4

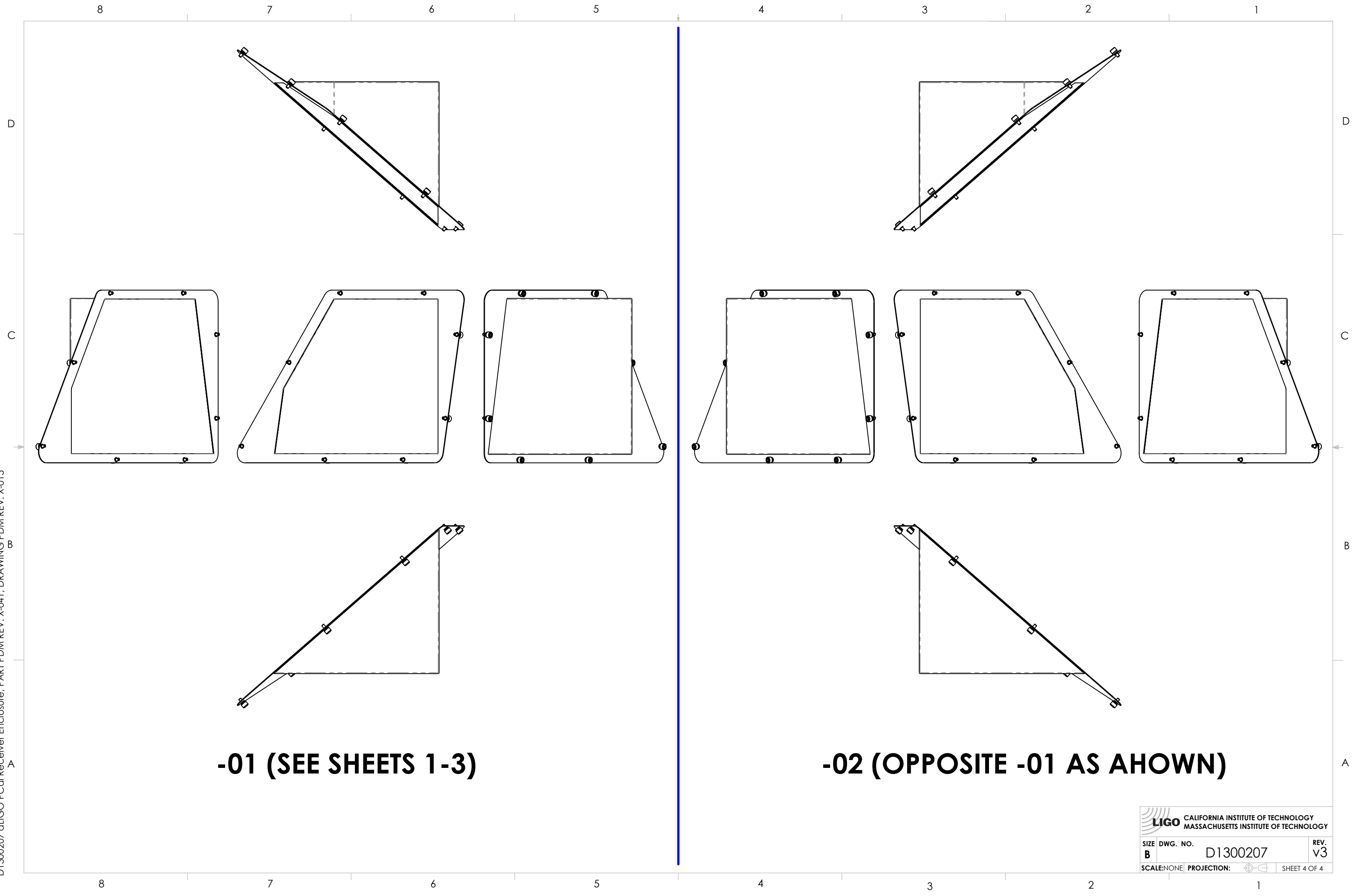
D1300207 dLIGO PCdI Receiver Enclosure, PART PDM REV: X-041, DRAWING-PDM REV: X-015



LIGO CALIFORNIA INSTITUTE OF TECHNOLOGY
MASSACHUSETTS INSTITUTE OF TECHNOLOGY

SIZE	DWG. NO.	REV.
B	D1300207	v3
SCALE: NONE	PROJECTION:	SHEET 3 OF 4

D1300207 dLIGO PCdI Receiver Enclosure, PART PDM REV: X-041, DRAWING PDM REV: X-015



-01 (SEE SHEETS 1-3)

-02 (OPPOSITE -01 AS SHOWN)

 CALIFORNIA INSTITUTE OF TECHNOLOGY MASSACHUSETTS INSTITUTE OF TECHNOLOGY		
SIZE	DWG. NO.	REV.
B	D1300207	v3
SCALE: NONE	PROJECTION:	SHEET 4 OF 4