

8 7 6 5 4 3 2 1

**NOTES CONTINUED:**

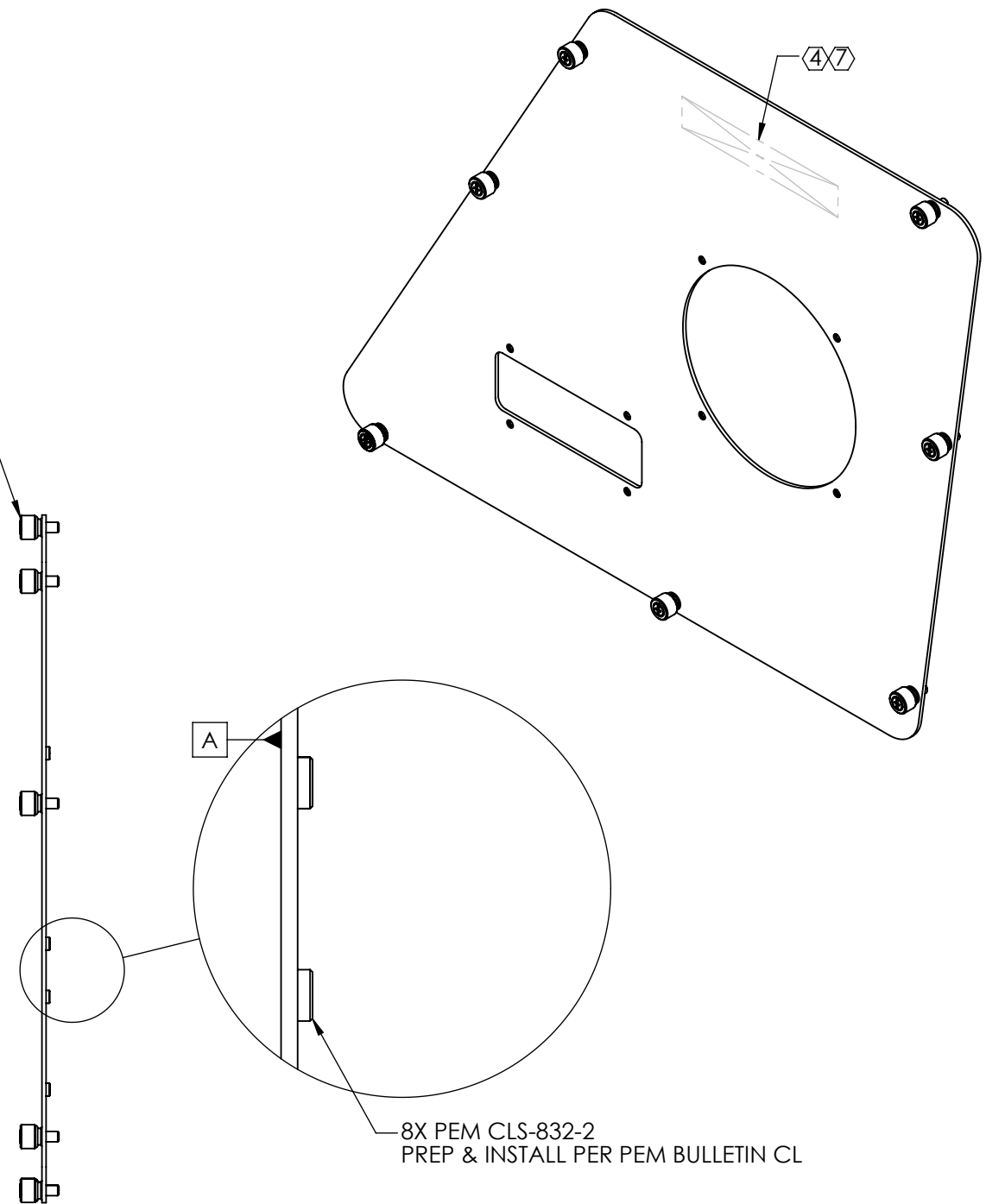
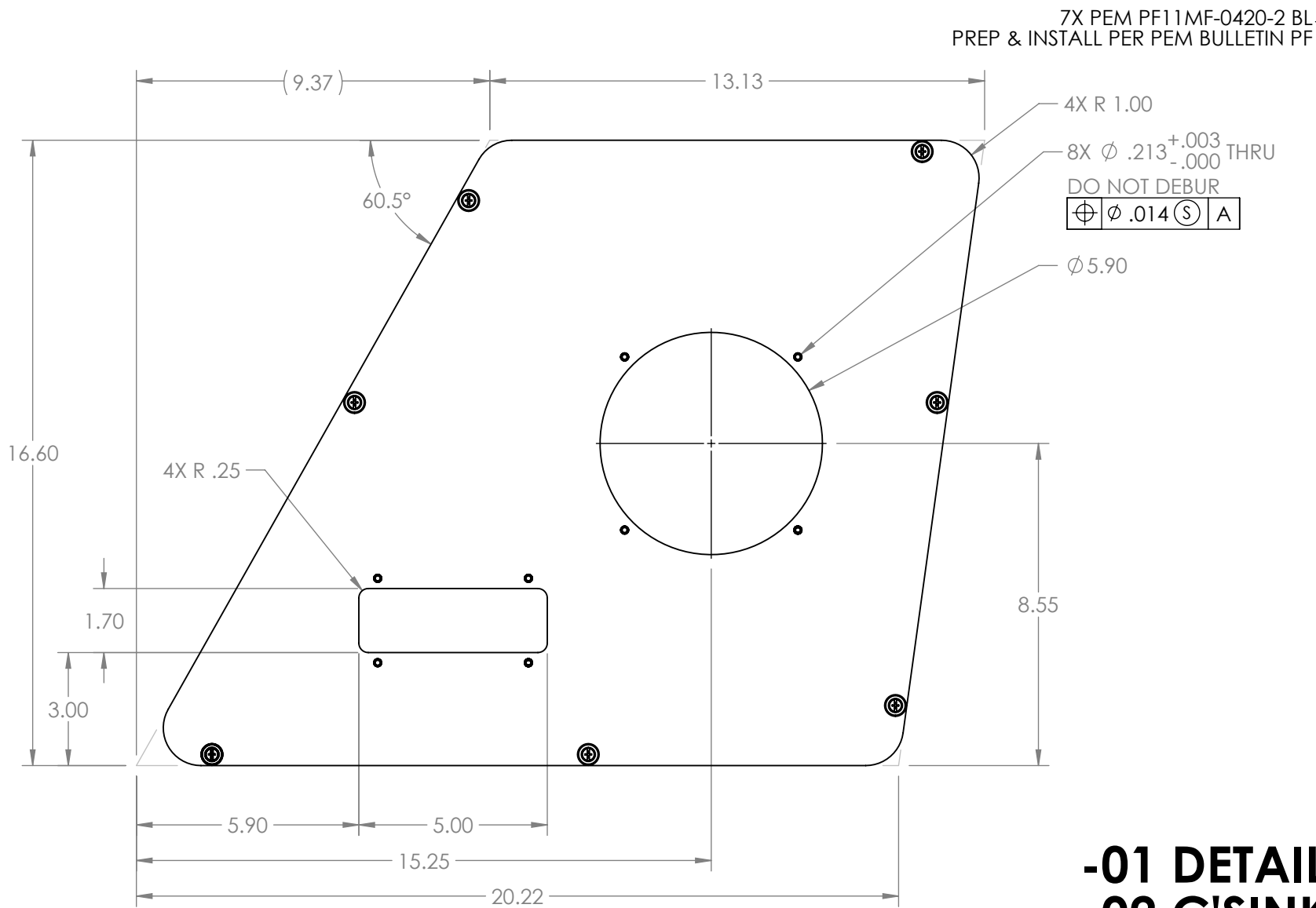
④ SCRIBE, ENGRAVE (A VIBRATORY TOOL MAY BE USED), LASER MARK OR MECHANICALLY STAMP (NO INKS OR DYES) DRAWING PART NUMBER, REVISION (AND DASH OR 'TYPE' NUMBER IF APPLICABLE) ON NOTED SURFACE OF PART FOLLOWED ON THE NEXT LINE WITH A THREE DIGIT SERIAL NUMBER. SERIAL NUMBERS START AT 001 FOR THE FIRST ARTICLE AND PROCEED CONSECUTIVELY. USE MINIMUM 0.12" HIGH CHARACTERS, UNLESS THE SIZE OF THE PART DICTATES SMALLER CHARACTERS.  
EXAMPLE: D1300246-v3, TYPE-01, S/N 003

5. WEIGHT: 2.5 LB [1.2 KG].

⑥ POWDER COAT ALL SHEET METAL SURFACES (EXCEPT PER ⑦) WITH BLACK SEMI-GLOSS WRINKLE FINISH.

⑦ MASK THE SCRIBED AREA FROM POWDER COAT.

| REV. | DATE        | DCN # | DRAWING TREE # |
|------|-------------|-------|----------------|
| v1   | 11 APR 2013 | -     | -              |
| v2   | 08 JUN 2013 | -     | -              |
| v3   | 10 JUN 2013 | -     | -              |



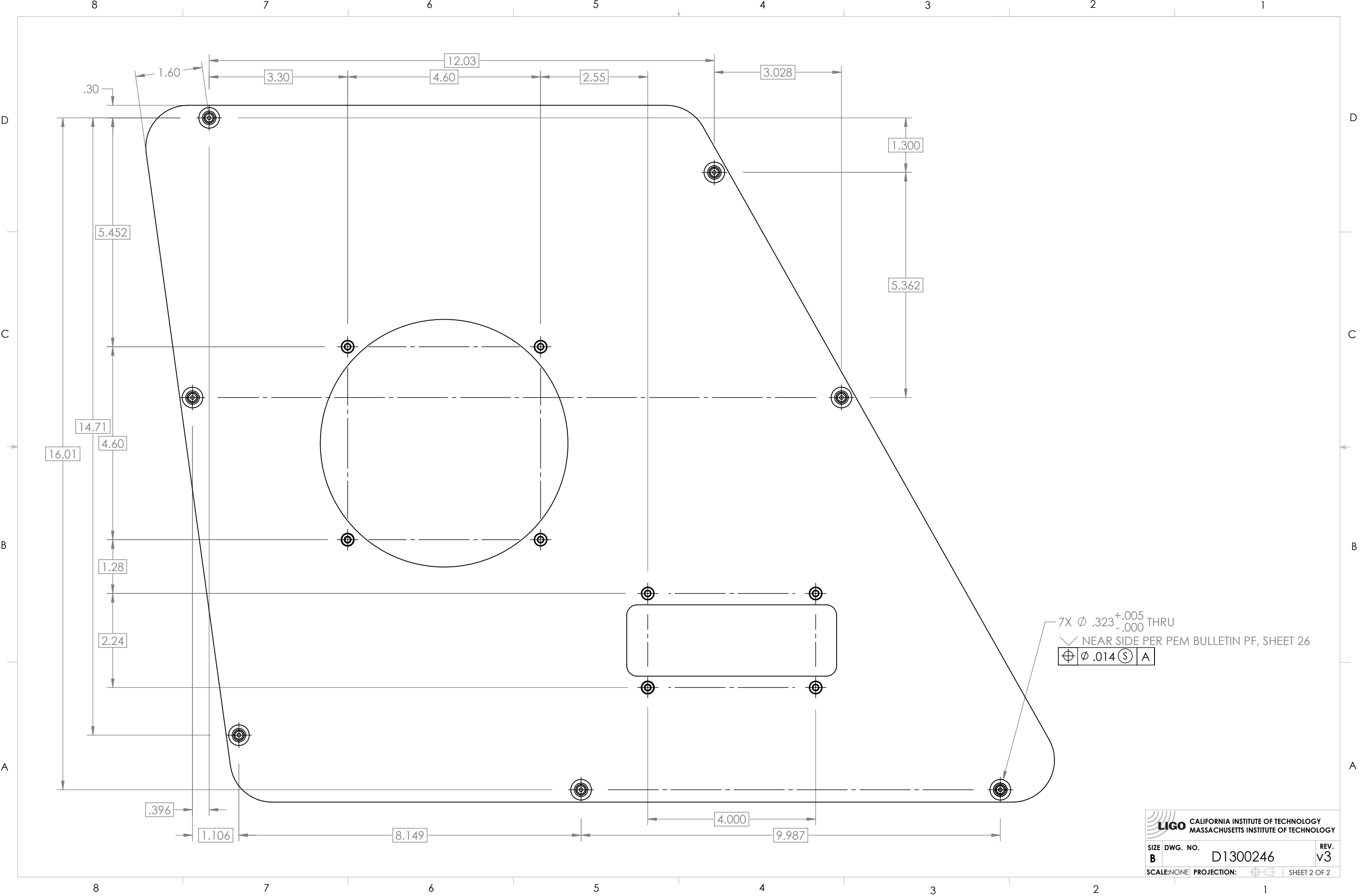
**-01 DETAILED  
-02 C'SINKS & INSERTS OPPOSITE SIDES**

D1300246 aLIGO PCal Receiver Aperture, PART PDM REV: X-030, DRAWING PDM REV: X-009

| NOTES AND TOLERANCES: (UNLESS OTHERWISE SPECIFIED) |  |  |  | LIGO CALIFORNIA INSTITUTE OF TECHNOLOGY MASSACHUSETTS INSTITUTE OF TECHNOLOGY |  | PART NAME                 |  |
|--|--|--|--|---|--|---------------------------|--|
| DIMENSIONS ARE IN INCHES                           |  | 1. INTERPRET DRAWING PER ASME Y14.5-1994.<br>2. BREAK ALL SHARP EDGES, .02 MAX.<br>3. DO NOT SCALE FROM DRAWING. |  | SYSTEM ADVANCED LIGO  |  | SUB-SYSTEM AOS            |  |
| TOLERANCES:<br>.XX ± .02<br>.XXX ± .005            |  | MATERIAL 6061-T6 Al, 0.100" SHEET  |  | NEXT ASSY D1001325-02 D1001330-02   |  | DESIGNER R. SAVAGE        |  |
| ANGULAR ± 1.0°                                     |  | FINISH ⑥   |  | CHECKER C. CONLEY   |  | DRAFTER C. CONLEY         |  |
|  |  |  |  | APPROVAL  |  | DATE 12 MAR 2013          |  |
|  |  |  |  |   |  | SIZE DWG. NO. B           |  |
|  |  |  |  |   |  | REV. v3                   |  |
|  |  |  |  |   |  | SCALE: NONE PROJECTION: ① |  |
|  |  |  |  |   |  | SHEET 1 OF 2              |  |

8 7 6 5 4 3 2 1

D1300246 dLIGO PCal Receiver Aperture, PART PDM REV: X-030, DRAWING PDM REV: X-009



**LIGO** CALIFORNIA INSTITUTE OF TECHNOLOGY  
 MASSACHUSETTS INSTITUTE OF TECHNOLOGY

|             |             |              |
|-------------|-------------|--------------|
| SIZE        | DWG. NO.    | REV.         |
| B           | D1300246    | v3           |
| SCALE: NONE | PROJECTION: | SHEET 2 OF 2 |