



ETM08 Integrated Scatter

Test Date	Apr. 22-25, 2013		
Author(S)	Liyuan Zhang, Margot Phelps, GariLynn Billingsley		
Approval(s)			
Specification Doc.	LIGO-E0900068	Specification	Not specified in LIGO-E0900068
Procedure Doc.	LIGO-E1000863		
1 st Scan (Mean \pm Error*)	8.0 \pm 2 ppm		
2 nd Scan (Mean \pm Error*)	8.5 \pm 2 ppm		
Conclusion	Qualified.		

*An estimated systematic error from previous multiple measurements with one LIGO-1 mirror.

Discussions and Comments:

Two TIS scans are carried out. One is of full coverage in central 48 mm in diameter with the beam and step sizes of 0.3 mm and other a sampling scan in central 160 mm in diameter with the same beam size and a step of 1.0 mm, as shown in Figs. 1 and 2 respectively.

ETM08 Integrated Scatter

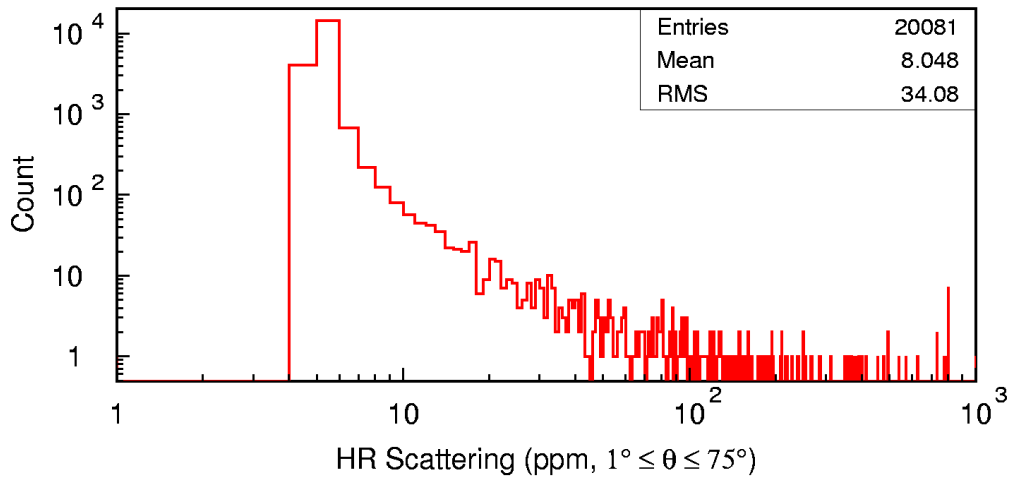
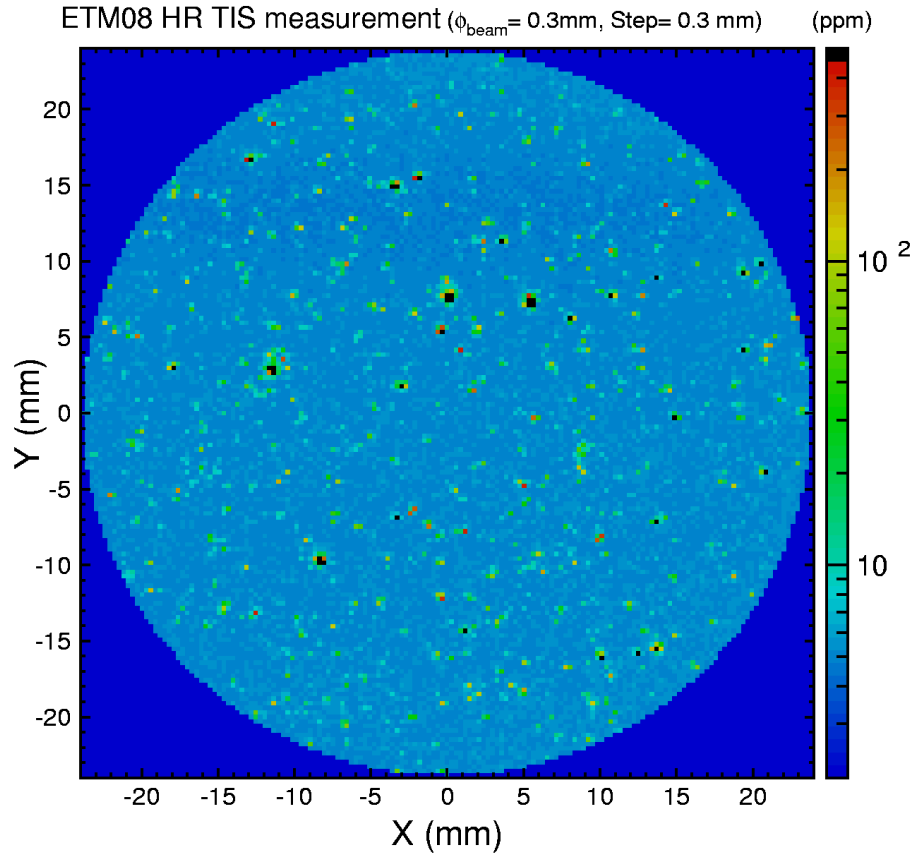


Fig. 1 ETM08 TIS full coverage scan over central 48 mm diameter aperture.

ETM08 Integrated Scatter

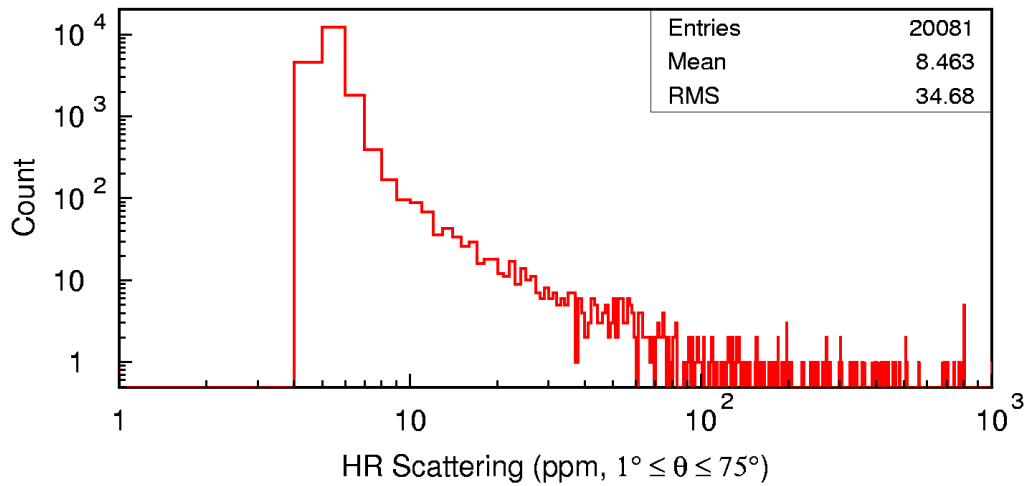
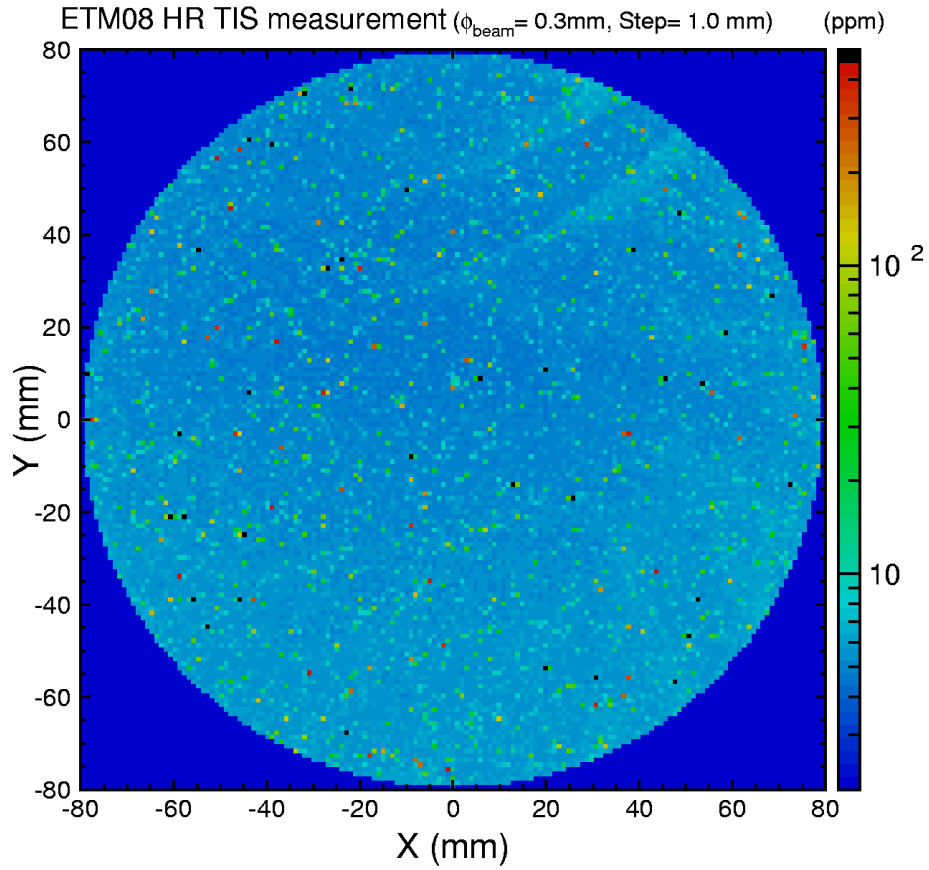


Fig. 2 ETM08 TIS full sampling scan over central 160 mm diameter aperture.