

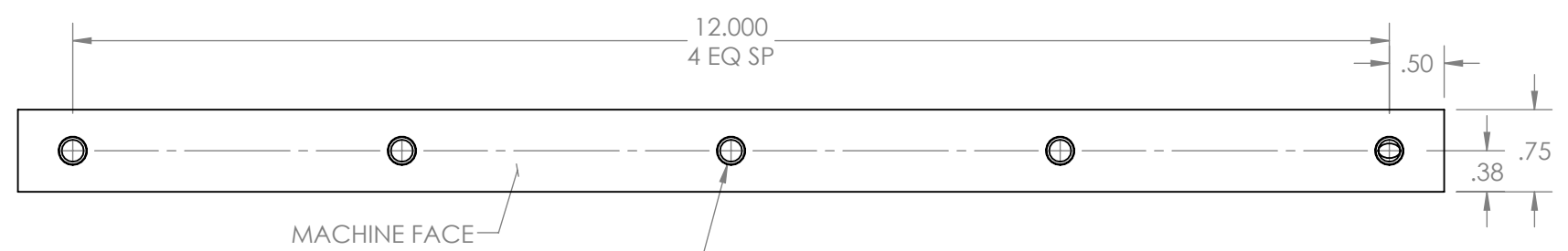
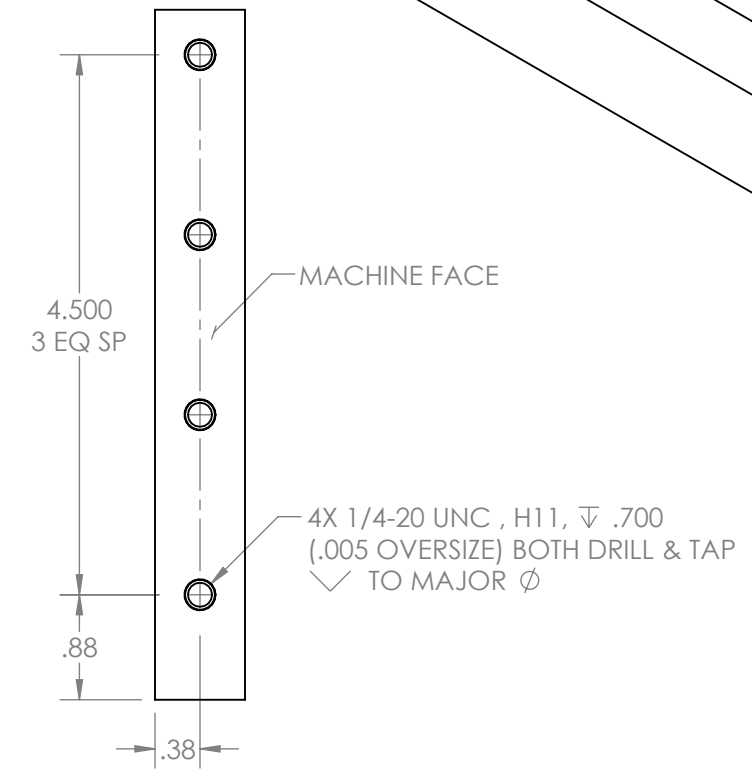
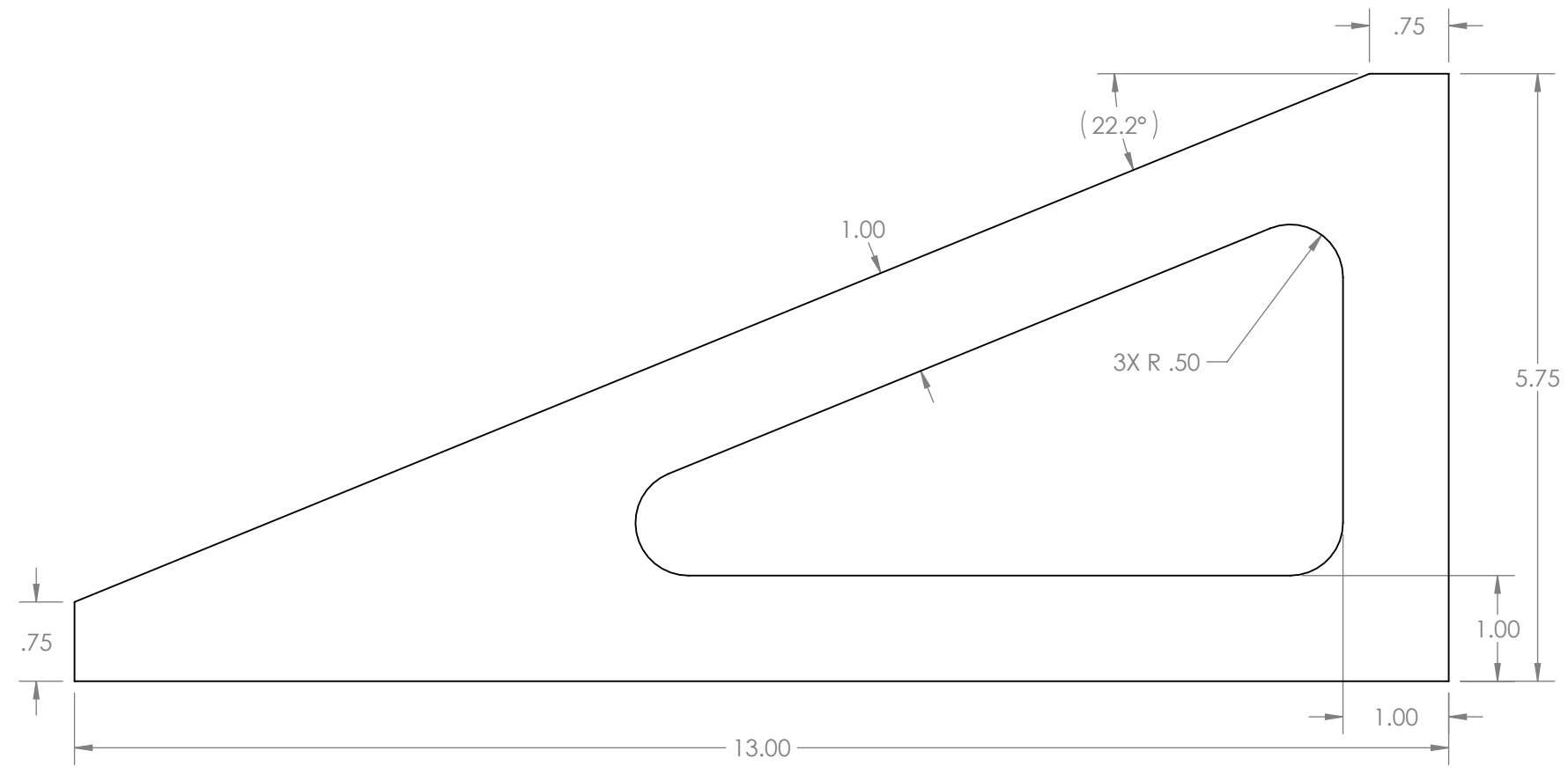
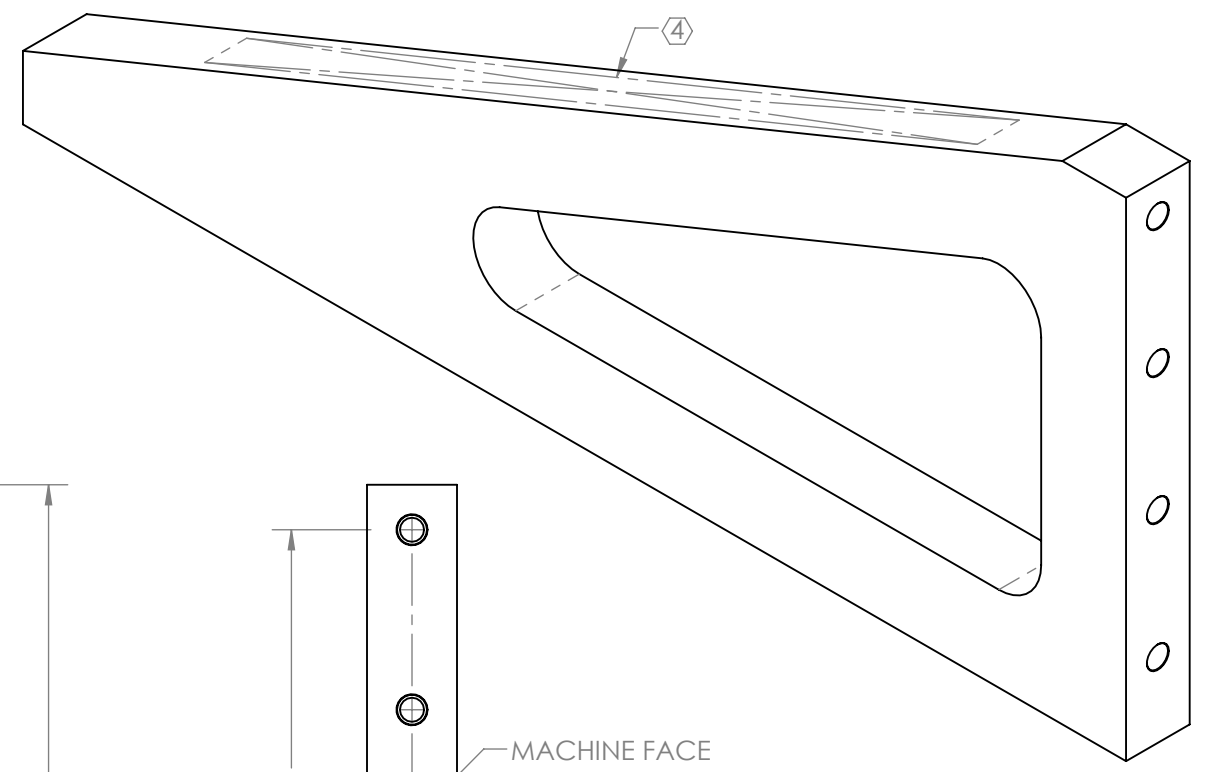
8 7 6 5 4 3 2 1

REV.	DATE	DCN #	DRAWING TREE #
v1	07 MAY 2013	-	-
-	-	-	-
-	-	-	-

NOTES CONTINUED:

④ SCRIBE, ENGRAVE (A VIBRATORY TOOL MAY BE USED), LASER MARK OR MECHANICALLY STAMP (NO INKS OR DYES) DRAWING PART NUMBER, REVISION (AND VARIANT OR "TYPE" IF APPLICABLE) ON NOTED SURFACE OF PART FOLLOWED ON THE NEXT LINE WITH A THREE DIGIT SERIAL NUMBER. SERIAL NUMBERS START AT 001 FOR THE FIRST ARTICLE AND PROCEED CONSECUTIVELY. USE MINIMUM 0.12" HIGH CHARACTERS, UNLESS THE SIZE OF THE PART DICTATES SMALLER CHARACTERS. EXAMPLE: DXXXXXX-VY, TYPE XX, S/N XXX

- 5. WEIGHT: 2.13 LB.
- 6. ALL TAPPED HOLES .005 OVERSIZE (H11), BOTH DRILL AND TAP, AS NOTED.



5X 1/4-20 UNC , H11, ∇ .700
(.005 OVERSIZE) BOTH DRILL & TAP
✓ TO MAJOR Ø

NOTES AND TOLERANCES: (UNLESS OTHERWISE SPECIFIED)	
DIMENSIONS ARE IN INCHES	
TOLERANCES: .XX ± .01 .XXX ± .005 ANGULAR ± 0.5°	
MATERIAL	6061-T6 Al
FINISH	250 μinch Ra MAX

CALIFORNIA INSTITUTE OF TECHNOLOGY MASSACHUSETTS INSTITUTE OF TECHNOLOGY	
SYSTEM	ADVANCED LIGO
SUB-SYSTEM	AOS
NEXT ASSY	D1300379

PART NAME		αLIGO PCAL TOOLING, PERISCOPE INSTALLATION ENTRY PAD GUSSET	
DESIGNER	R. SAVAGE	DATE	03 MAY 2013
DRAFTER	C. CONLEY	DATE	07 MAY 2013
CHECKER		SIZE	DWG. NO.
APPROVAL		B	D1300381
SCALE: NONE		PROJECTION:	
		SHEET 1 OF 1	

D1300381 αLIGO Pcal Tooling, Periscope Installation Entry Pad Gusset, PART PDM REV: X-004, DRAWING PDM REV: X-000

8 7 6 5 4 3 2 1