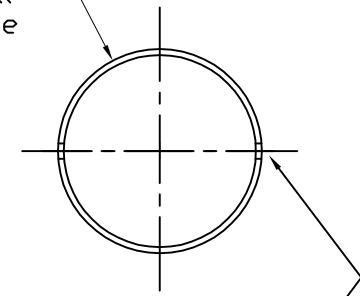


NOTES: (UNLESS OTHERWISE SPECIFIED)
 ⚠ x
 ⚠ x

⌀2.250
 2.25 OD x
 .065" Wall
 6061 Tube
 Typ



1/4" (.25) hole
 thru one wall
 3PL.

Part # 1
 Long Stiffner
 1 Req'd

MAKE ONE PER ASSEMBLY

5	-	-	-	-	-
4	-	-	-	-	-
3	-	-	-	-	-
2	-	-	-	-	-
1	-	-	-	-	-
REF QTY	PART or DRWG No.	DESCRIPTION	MATERIAL		

		UNLESS OTHERWISE SPECIFIED DIMENSIONS ARE IN INCHES				LIGO CALIFORNIA INSTITUTE OF TECHNOLOGY MASSACHUSETTS INSTITUTE OF TECHNOLOGY	
		TOLERANCES:	ANGULARMACH BEND				TITLE
		FRACTIONAL ± 1/32	FINISHED SURFACE RMS 63				Periscope Stiffner
		TWO PLACE DECIMAL ± .01	BREAK CORNERS and EDGES				#1
		THREE PLACE DECIMAL ± .005	REMOVE ALL BURRS				CAD FILE
		ANGULAR ± 1 deg.					D010146-A
XXX	XXX	MATERIAL: Alum 6061 T-6	HEAT TREAT: TBD	FINISH: None	A	RELEASE	E010215-00-D
DWG. NO.	DESCRIPTION	USED ON: XXX	NEXT ASS'Y: XXX	REV	00	PRE-RELEASE	-
REFERENCE DRAWINGS				ISSUE DESCRIPTION		DCN NUMBER	APPR'D CHECK DRWN DATE
						SCALE	FULL SHEET