

8 7 6 5 4 3 2 1

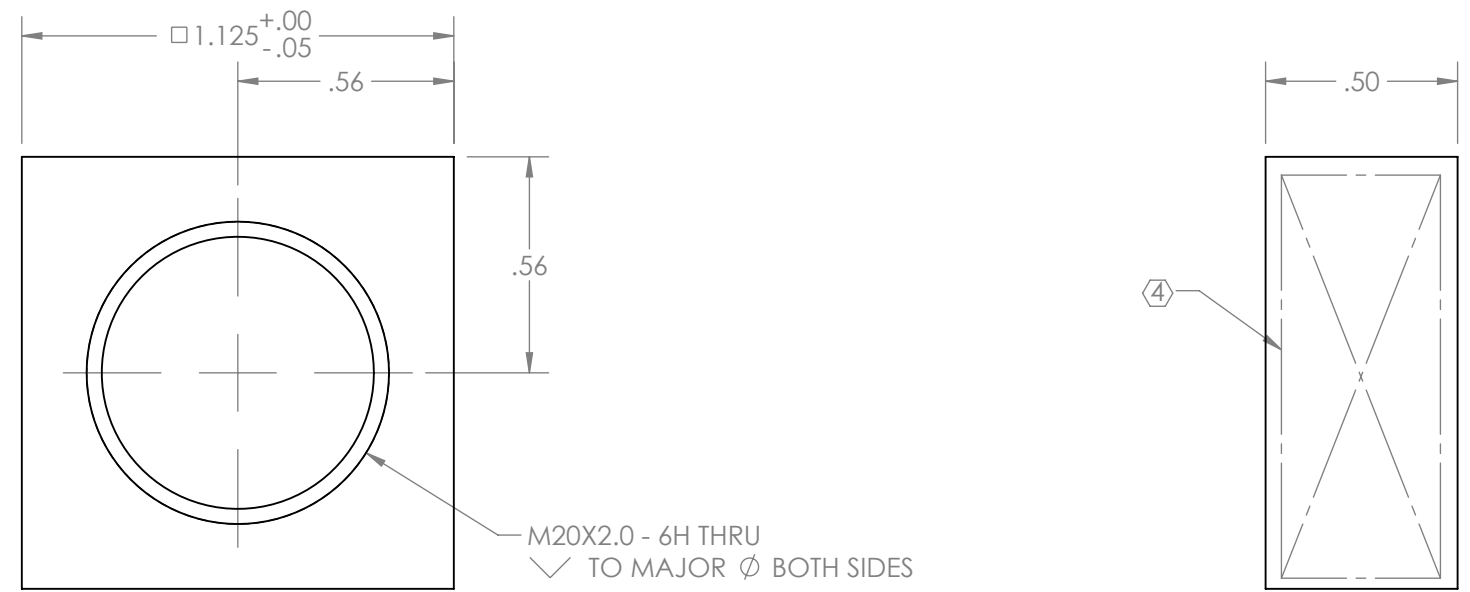
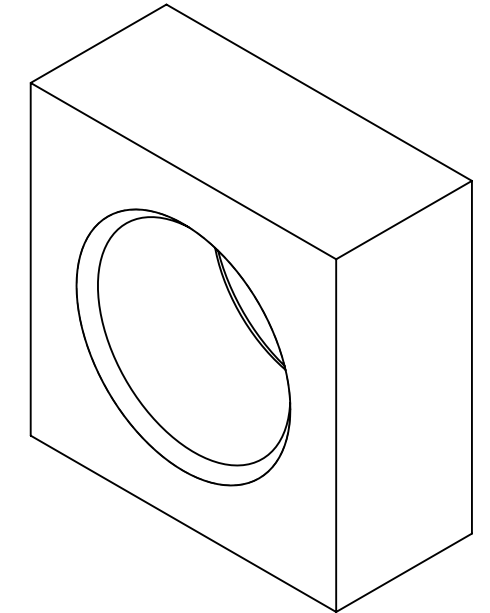
NOTES CONTINUED:

④ SCRIBE, ENGRAVE (A VIBRATORY TOOL MAY BE USED), LASER MARK OR MECHANICALLY STAMP (NO INKS OR DYES) A UNIQUE THREE DIGIT SERIAL NUMBER & REVISION NUMBER ON EACH PART WHERE NOTED. SERIAL NUMBERS START AT 001 FOR THE FIRST ARTICLE AND PROCEED CONSECUTIVELY. BAG AND TAG PARTS WITH THEIR DRAWING PART NUMBER, REVISION, AND QUANTITY.
 EXAMPLE (PART): 001-v1
 EXAMPLE (TAG): D1300497-v1, QTY: TBD

5. WEIGHT: 0.04 LB.

⑥ MATERIAL: ALUMINUM TOOLING PLATE.

| REV. | DATE | DCN # | DRAWING TREE # |
|------|-------------|-------|----------------|
| v1 | 29 MAY 2013 | - | - |
| - | - | - | - |
| - | - | - | - |



D1300497 aLIGO Pcal Tooling, Corner Qube Attachment Nut, PART PDM REV: X-000, DRAWING PDM REV: X-000

D
C
B
A

D
C
B
A

| NOTES AND TOLERANCES: (UNLESS OTHERWISE SPECIFIED) | | | | LIGO CALIFORNIA INSTITUTE OF TECHNOLOGY MASSACHUSETTS INSTITUTE OF TECHNOLOGY | | PART NAME | |
|--|--|--|--|---|--|-------------------------|--|
| DIMENSIONS ARE IN INCHES | | 1. INTERPRET DRAWING PER ASME Y14.5-1994. 2. BREAK ALL SHARP EDGES, .02 MAX. 3. DO NOT SCALE FROM DRAWING. | | SYSTEM | | SUB-SYSTEM | |
| TOLERANCES: .XX ± .01 .XXX ± .005 | | MATERIAL | | ADVANCED LIGO | | AOS | |
| ANGULAR ± 0.5° | | FINISH | | NEXT ASSY | | DESIGNER | |
| ⑥ | | 250 μinch Ra MAX | | D1300437 | | R. SAVAGE C. CONLEY | |
| | | | | | | 29 MAY 2013 | |
| | | | | | | 29 MAY 2013 | |
| | | | | | | SIZE DWG. NO. | |
| | | | | | | B D1300497 | |
| | | | | | | REV. | |
| | | | | | | v1 | |
| | | | | | | SCALE: NONE PROJECTION: | |
| | | | | | | SHEET 1 OF 1 | |

8 7 6 5 4 3 2 1