

D1300522 aLIGO Pcal Tooling, Receiver Mount Fixture Plate, PART PDM REV: X-006, DRAWING PDM REV: X-008

NOTES (CONTINUED):
 ④ SCRIBE, ENGRAVE (A VIBRATORY TOOL MAY BE USED), LASER MARK OR MECHANICALLY STAMP (NO INKS OR DYES) DRAWING PART NUMBER, REVISION ON NOTED SURFACE OF PART FOLLOWED ON THE NEXT LINE WITH A THREE DIGIT SERIAL NUMBER. SERIAL NUMBERS START AT 001 FOR THE FIRST ARTICLE AND PROCEED CONSECUTIVELY. USE MINIMUM 0.12" HIGH CHARACTERS, UNLESS THE SIZE OF THE PART DICTATES SMALLER CHARACTERS. EXAMPLE: D1300522-v2, S/N 001

5. WEIGHT: 6.75 LB.

⑥ OPTIONAL MATERIAL: ALUMINUM TOOLING PLATE.

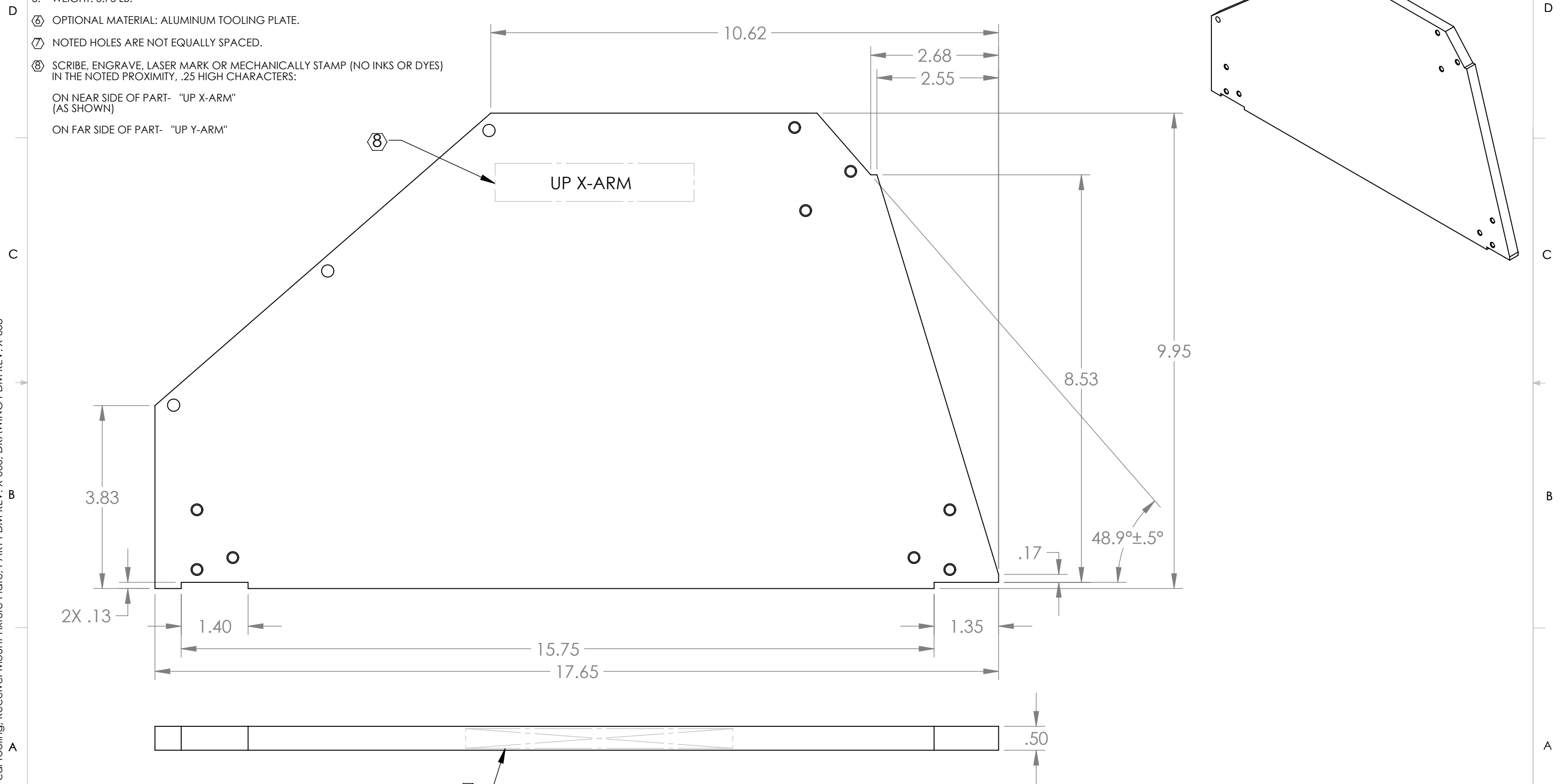
⑦ NOTED HOLES ARE NOT EQUALLY SPACED.

⑧ SCRIBE, ENGRAVE, LASER MARK OR MECHANICALLY STAMP (NO INKS OR DYES) IN THE NOTED PROXIMITY, .25 HIGH CHARACTERS:

ON NEAR SIDE OF PART- "UP X-ARM"
 (AS SHOWN)

ON FAR SIDE OF PART- "UP Y-ARM"

REV.	DATE	DCN #	BOM #
v1	11 JUN 2013	-	-
v2	09 JUL 2013	-	-
v3	11 JUL 2013	-	-

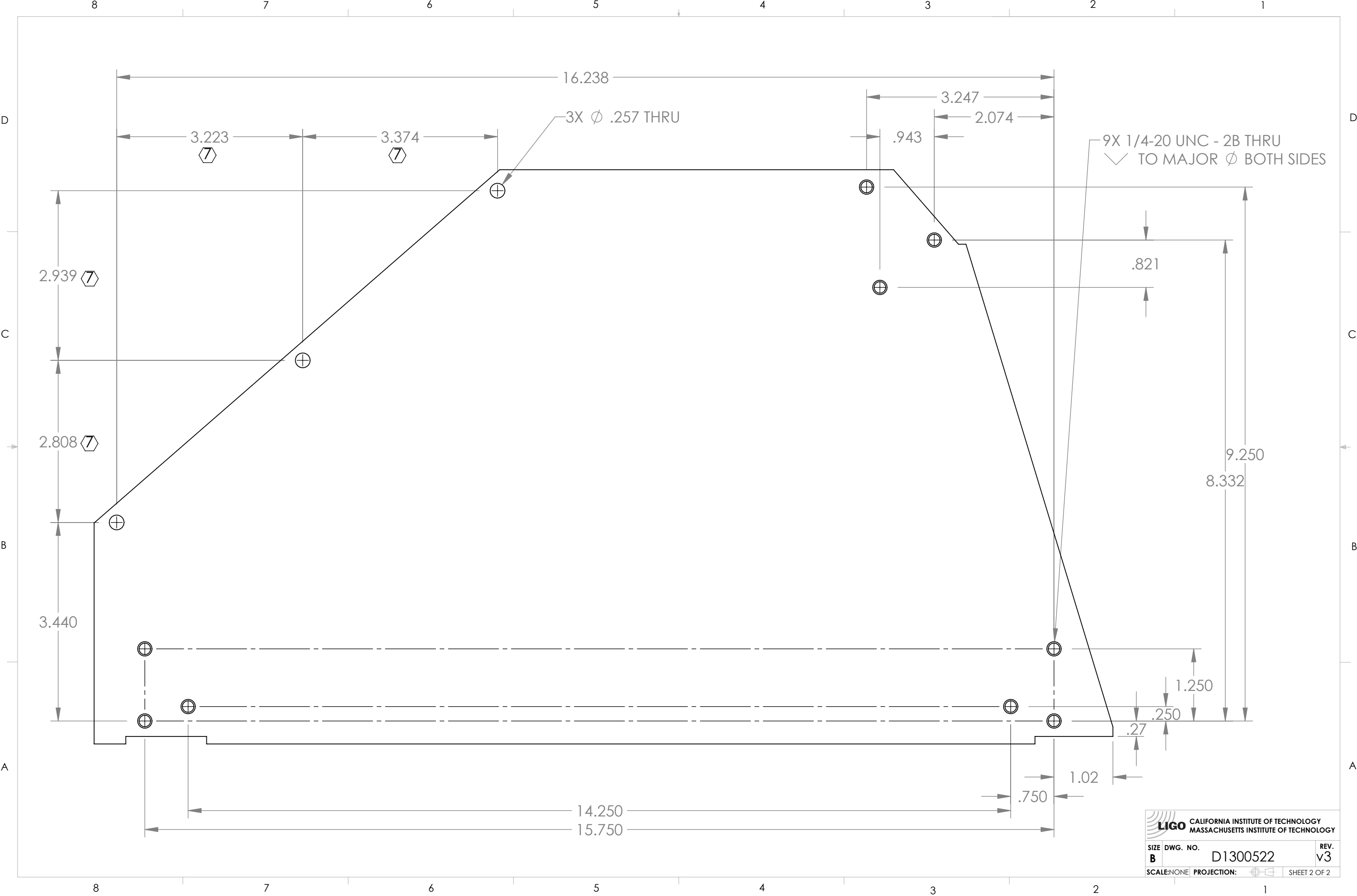


NOTES AND TOLERANCES: (UNLESS OTHERWISE SPECIFIED)	
DIMENSIONS ARE IN INCHES	
TOLERANCES: .XX $\pm .01$.XXX $\pm .005$ ANGULAR $\pm 1.0^\circ$	
MATERIAL 6061-T6 Al ⑥	FINISH 250 μ inch Ra MAX

CALIFORNIA INSTITUTE OF TECHNOLOGY MASSACHUSETTS INSTITUTE OF TECHNOLOGY		PART NAME aLIGO PCAL TOOLING, RECEIVER MOUNT FIXTURE PLATE	
SYSTEM ADVANCED LIGO	SUB-SYSTEM AOS	DESIGNER R. SAVAGE	DATE 07 JUN 2013
NEXT ASSY D1300525	CHECKER C. CONLEY	DRAFTER C. CONLEY	DATE 11 JUNE 2013
APPROVAL		SIZE B	DWG. NO. D1300522
		SCALE: NONE	PROJECTION:
		SHEET 1 OF 2	

8 7 6 5 4 3 2 1

D1300522 dLIGO Pcal Tooling, Receiver Mount Fixture Plate, PART PDM REV: X-006, DRAWING PDM REV: X-008



LIGO CALIFORNIA INSTITUTE OF TECHNOLOGY
 MASSACHUSETTS INSTITUTE OF TECHNOLOGY

SIZE	DWG. NO.	REV.
B	D1300522	v3
SCALE: NONE	PROJECTION:	SHEET 2 OF 2