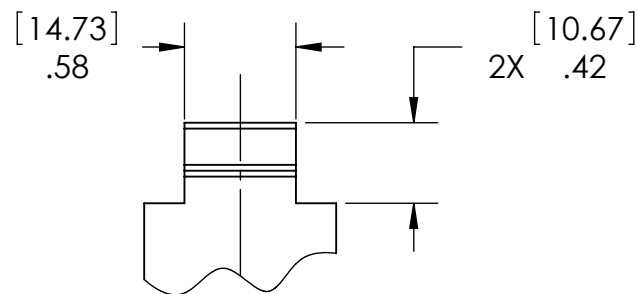
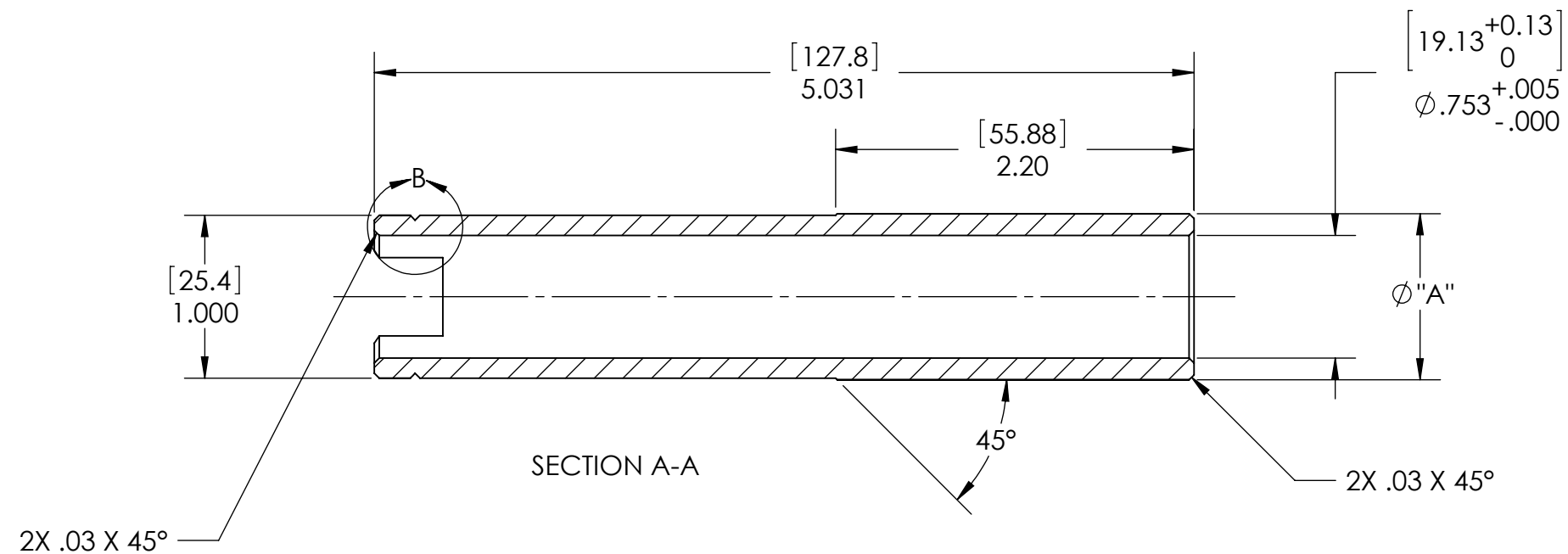
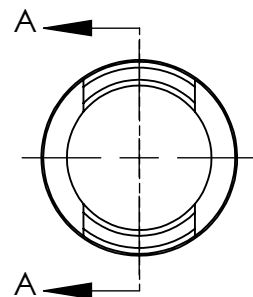
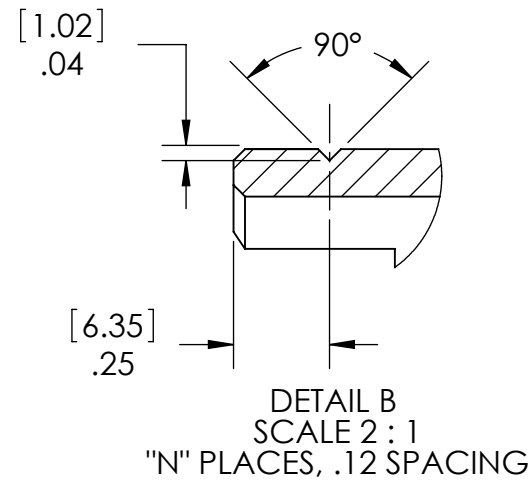


D1300537 KAGRA, OVERSIZE LOCATING SLEEVE, 370mm OPTIC CONTAINER, PART PDM REV: X-003, DRAWING PDM REV: X-003

**NOTES CONTINUED:**  
 ⑤ SCRIBE, ENGRAVE (A VIBRATORY TOOL MAY BE USED), LASER MARK OR MECHANICALLY STAMP (NO INKS OR DYES) DRAWING PART NUMBER, REVISION (AND VARIANT OR "TYPE" IF APPLICABLE) ON NOTED SURFACE OF PART FOLLOWED ON THE NEXT LINE WITH A THREE DIGIT SERIAL NUMBER. SERIAL NUMBERS START AT 001 FOR THE FIRST ARTICLE AND PROCEED CONSECUTIVELY. USE MINIMUM 0.12" HIGH CHARACTERS, UNLESS THE SIZE OF THE PART DICTATES SMALLER CHARACTERS. EXAMPLE: DXXXXXX-VY, TYPE-XX, S/N XXX

REV.	DATE	DCN #	DRAWING TREE #
v1	11 JUN 2013		

PART NUMBER	Ø "A"	GROOVE PLACES "N"
D1300537-1	1.020	1
D1300537-2	1.040	2
D1300537-3	1.060	3
D1300537-4	1.080	4



<b>NOTES AND TOLERANCES: (UNLESS OTHERWISE SPECIFIED)</b> DIMENSIONS ARE IN INCHES [MM] TOLERANCES: .XX ± .01 .XXX ± .005 ANGULAR ± 0.5°		1. INTERPRET DRAWING PER ASME Y14.5-1994. 2. REMOVE ALL SHARP EDGES, R.02 MIN. 3. DO NOT SCALE FROM DRAWING. 4. ALL MACHINING FLUIDS MUST BE FULLY SYNTHETIC, FULLY WATER SOLUBLE AND FREE OF SULFUR, SILICONE, AND CHLORINE.		CALIFORNIA INSTITUTE OF TECHNOLOGY MASSACHUSETTS INSTITUTE OF TECHNOLOGY		PART NAME OVERSIZE LOCATING SLEEVE, 370mm OPTIC CONTAINER	
MATERIAL PFA440 HP		FINISH N/A µinch		SYSTEM KAGRA		SUB-SYSTEM N/A	
NEXT ASSY D0902120		DESIGNER K. BUCKLAND		DATE 11 JUN 2013		SIZE DWG. NO. B D1300537	
		DRAFTER K. BUCKLAND		DATE 11 JUN 2013		REV. v1	
		CHECKER APPROVAL		SCALE: 1:1		PROJECTION:  SHEET 1 OF 1	