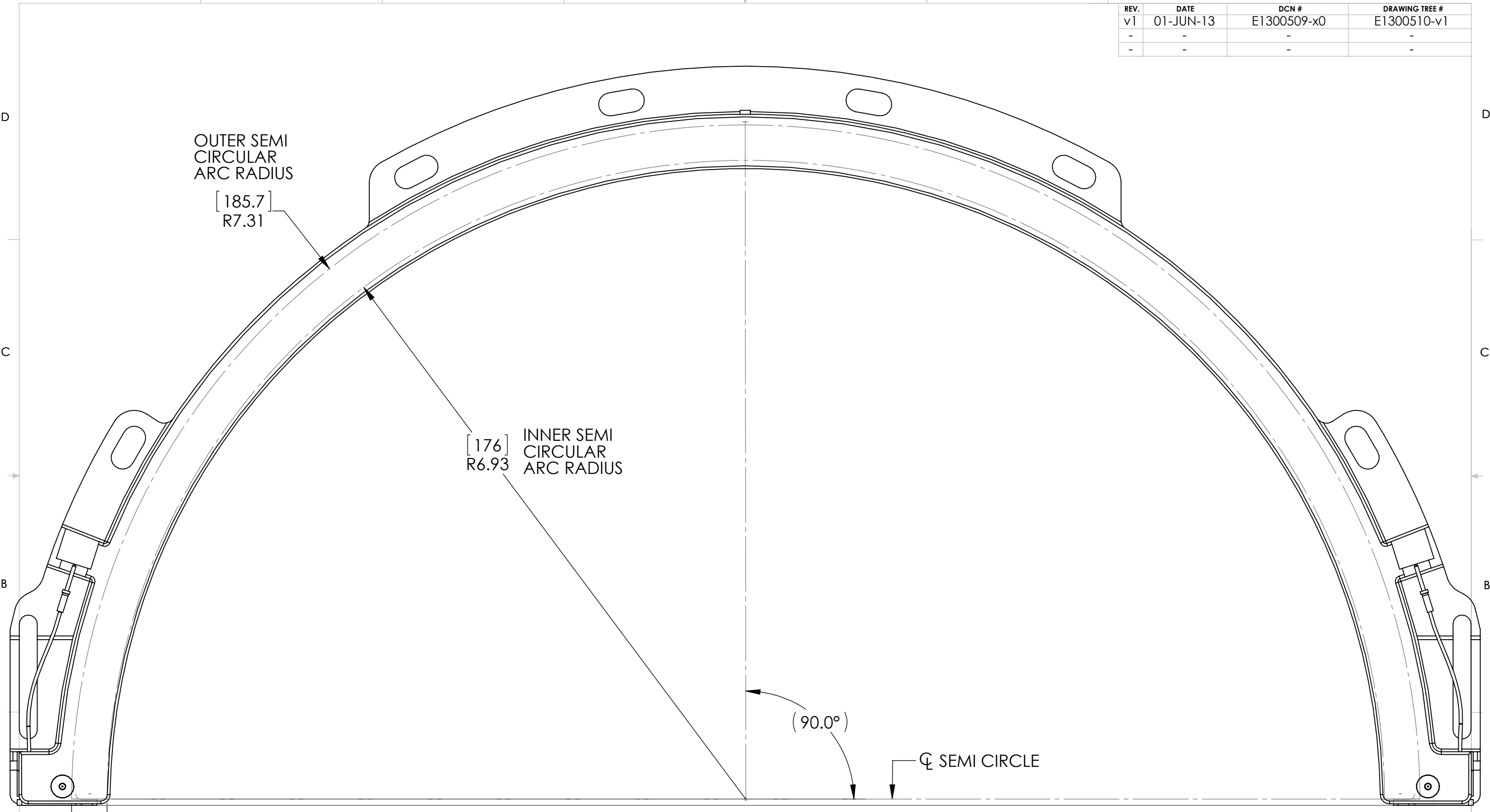


F1300015-v1_POST-PROD ENHANCED_αLIGO TCS UPPER RH ASSY, PART PDM REV: X-000, DRAWING PDM REV: X-000

REV.	DATE	DCN #	DRAWING TREE #
v1	01-JUN-13	E1300509-x0	E1300510-v1
-	-	-	-
-	-	-	-



OUTER SEMI CIRCULAR ARC RADIUS

[185.7]
R7.31

INNER SEMI CIRCULAR ARC RADIUS

[176]
R6.93

(90.0°)

∅ SEMI CIRCLE

[9.8]
.384
∅ OUTER TUBE

NOTES AND TOLERANCES: (UNLESS OTHERWISE SPECIFIED)	
DIMENSIONS ARE IN INCHES [MM]	
1. INTERPRET DRAWING PER ASME Y14.5-1994.	
2. REMOVE ALL SHARP EDGES, .005-.015, FOR MACHINED PARTS. ROUND ALL EDGES APPROXIMATELY R.02 FOR SHEET METAL PARTS.	
3. DO NOT SCALE FROM DRAWING.	
4. ALL MACHINING FLUIDS MUST BE FULLY SYNTHETIC, FULLY WATER SOLUBLE AND FREE OF SULFUR, SILICONE, AND CHLORINE.	
TOLERANCES:	
.XX ± .01	
.XXX ± .005	
ANGULAR ± 1.0°	
MATERIAL	N/A
FINISH	N/A μinch

LIGO	CALIFORNIA INSTITUTE OF TECHNOLOGY MASSACHUSETTS INSTITUTE OF TECHNOLOGY
SYSTEM ADVANCED LIGO	SUB-SYSTEM AOS
NEXT ASSY D1002027	

PART NAME POST-PROD ENHANCED_αLIGO TCS UPPER RH ASSY	
DESIGNER M. JACOBSON	18-MAR-13
DRAFTER M. JACOBSON	01-JUN-13
CHECKER	
APPROVAL	
SIZE DWG. NO. B F1300015	REV. v1
SCALE: 1:2	PROJECTION:
SHEET 1 OF 1	