

NOTES CONTINUED:

④ SCRIBE, ENGRAVE (A VIBRATORY TOOL MAY BE USED), LASER MARK OR MECHANICALLY STAMP (NO INKS OR DYES) DRAWING PART NUMBER, REVISION, DASH OR 'TYPE' NUMBER, AND A THREE DIGIT SERIAL NUMBER. SERIAL NUMBERS START AT 001 FOR THE FIRST ARTICLE AND PROCEED CONSECUTIVELY. USE MINIMUM 0.12" HIGH CHARACTERS. EXAMPLE: D1300682-v3, TYPE -01, S/N 001

D 5. WEIGHT: 1.52 LB.

6. ALL THROUGH FEATURES MAY BE WATER JET CUT IF PROCESS CAN HOLD TOLERANCES.

⑦ CONFIGURATIONS

- 01: AS SHOWN DETAILED
- 02: MACHINE ∇ .23 SLOT RECESSES OPPOSITE SIDE
MACHINE \square ϕ .375 X ∇ .100 OPPOSITE SIDE
SEE SHEET 2

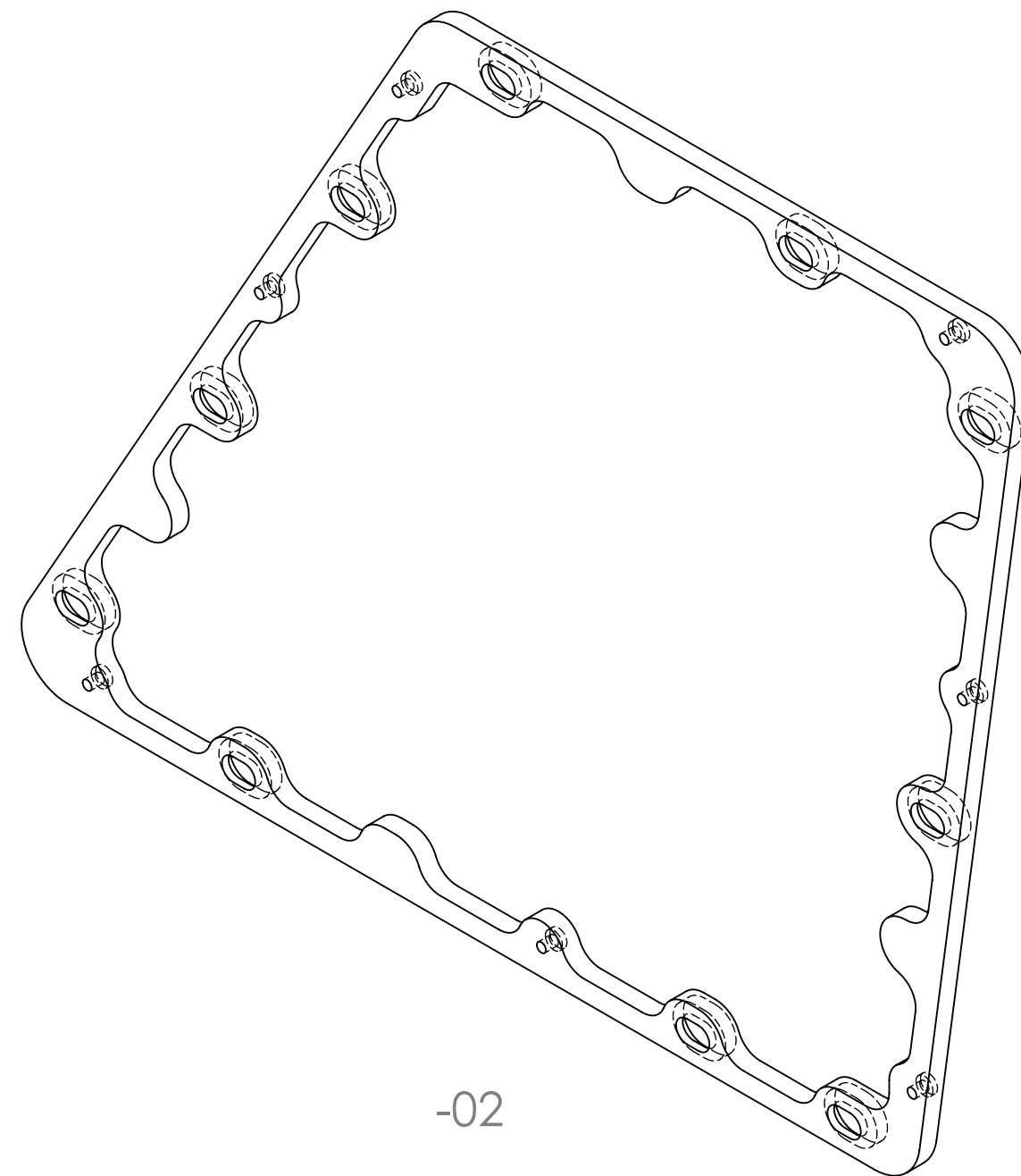
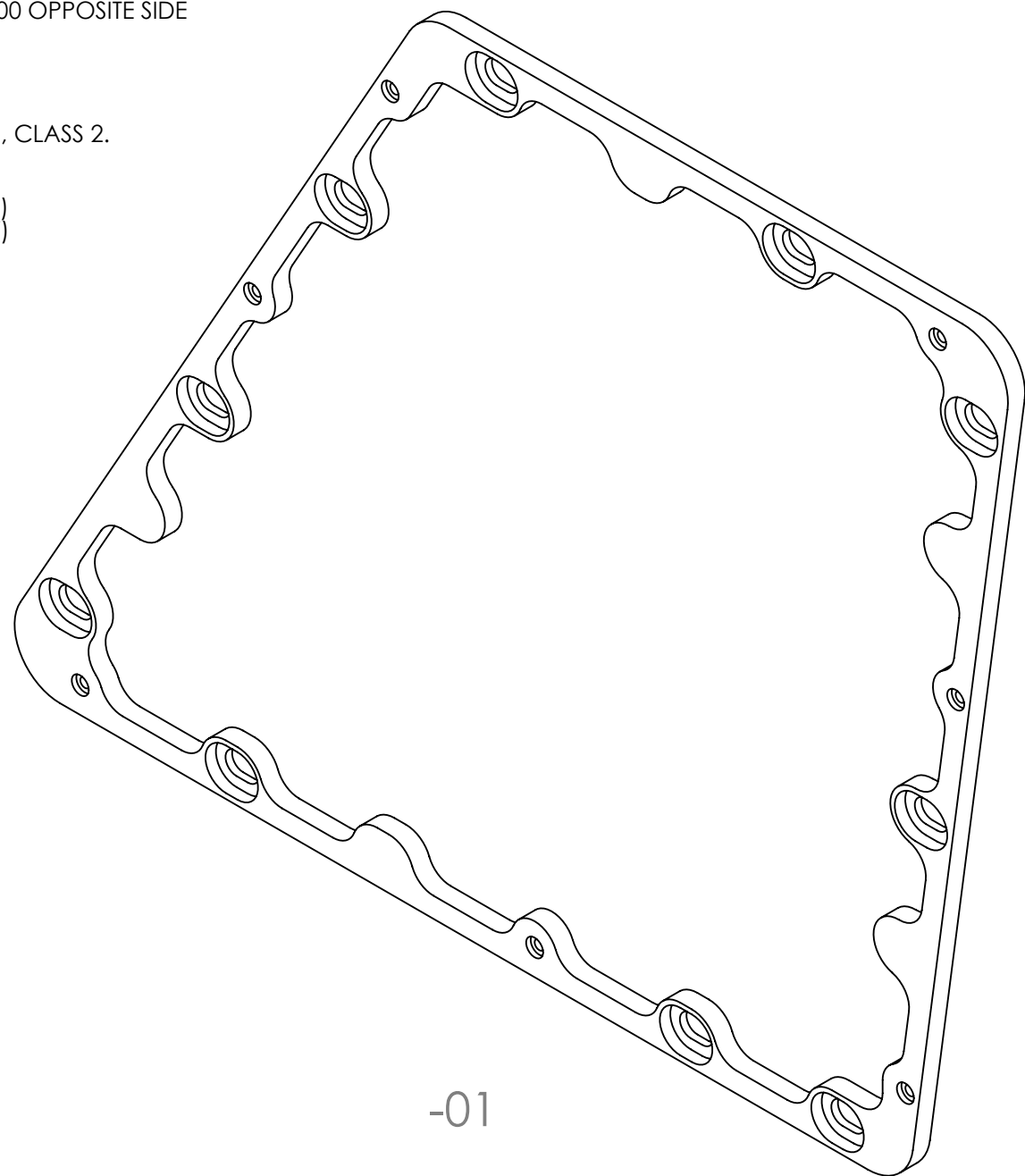
⑧ TUMBLE DEBURR OK.

⑨ BLACK ANODIZE PER MIL-A-8625F, TYPE II, CLASS 2.

10. USAGE

- 01: USE ON D1001330-02 (END-X)
- 02: USE ON D1001325-02 (END-Y)

REV.	DATE	DCN #	BOM #
v1	23 AUG 2013	-	-
v2	03 SEP 2013	-	-
v3	09 SEP 2013	E1300649-x0	-



D1300682 dLIGO Pcal Receiver Enclosure Adapter, Front, PART PDM REV: X-033, DRAWING PDM REV: X-013

C
B
A

D
C
B
A

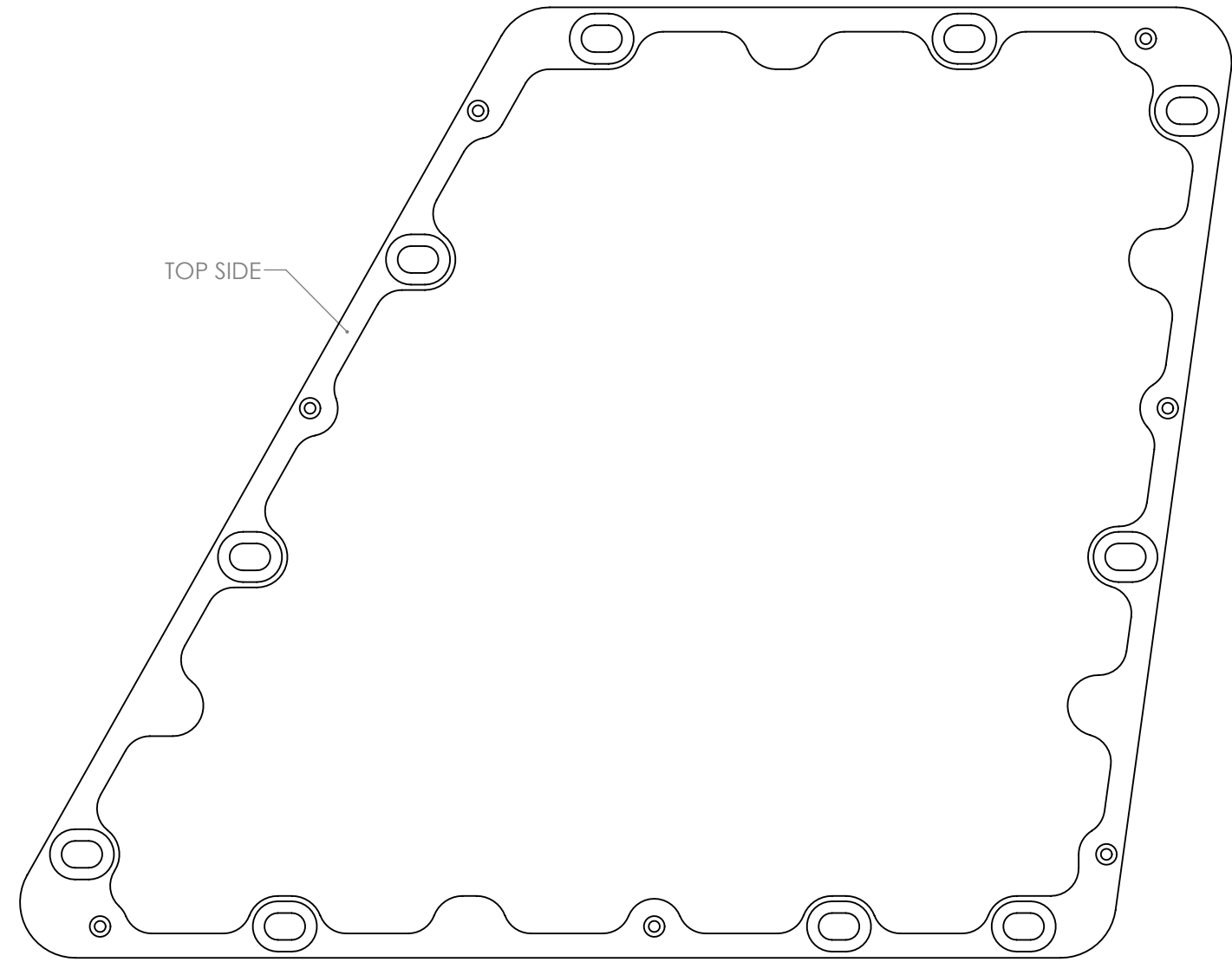
<p>NOTES AND TOLERANCES: (UNLESS OTHERWISE SPECIFIED)</p> <p>DIMENSIONS ARE IN INCHES</p> <p>TOLERANCES: .XX \pm .02 .XXX \pm .005 ANGULAR \pm 0.1°</p>		<p>1. INTERPRET DRAWING PER ASME Y14.5-1994. 2. BREAK ALL SHARP EDGES, .02 MAX. 3. DO NOT SCALE FROM DRAWING.</p>		<p>LIGO CALIFORNIA INSTITUTE OF TECHNOLOGY MASSACHUSETTS INSTITUTE OF TECHNOLOGY</p>		<p>PART NAME dLIGO PCAL RECEIVER ENCLOSURE ADAPTER, FRONT</p>	
<p>MATERIAL 6061-T6 Al</p>		<p>FINISH N/A μINCH Ra MAX (8)9</p>		<p>SYSTEM ADVANCED LIGO</p>		<p>SUB-SYSTEM AOS</p>	
<p>NEXT ASSY D1001325 D1001330</p>		<p>DESIGNER R. SAVAGE</p>		<p>DATE 23 AUG 2013</p>		<p>SIZE DWG. NO. B D1300682</p>	
		<p>DRAFTER C. CONLEY</p>		<p>DATE 23 AUG 2013</p>		<p>REV. v3</p>	
		<p>CHECKER SEE DCN</p>		<p>APPROVAL SEE DCN</p>		<p>SCALE: NONE PROJECTION: </p>	
						<p>SHEET 1 OF 4</p>	

D1300682 aLIGO Pcal Receiver Enclosure Adapter, Front, PART PDM REV: X-033, DRAWING PDM REV: X-013

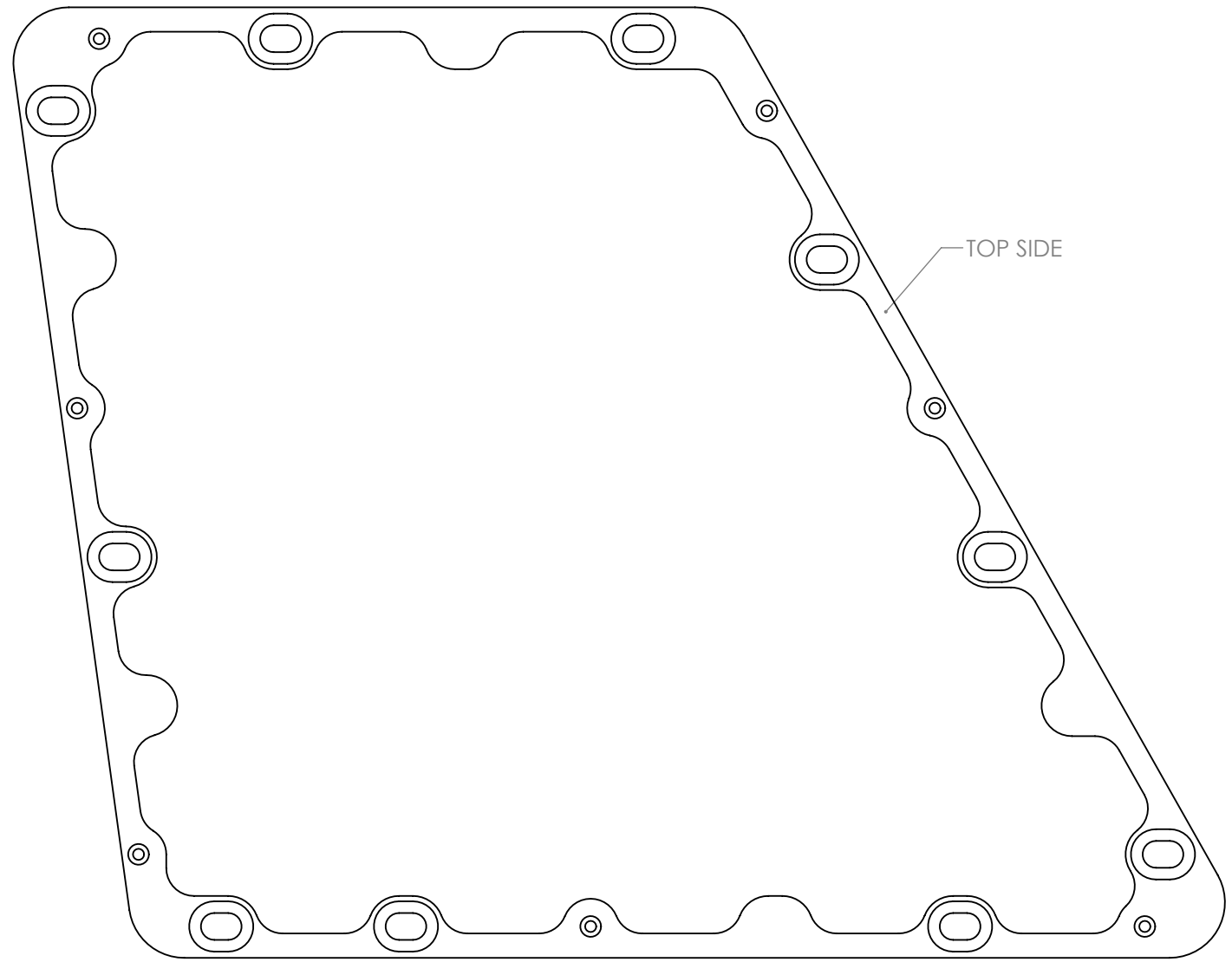
8 7 6 5 4 3 2 1

D
C
B
A

D
C
B
A



-01

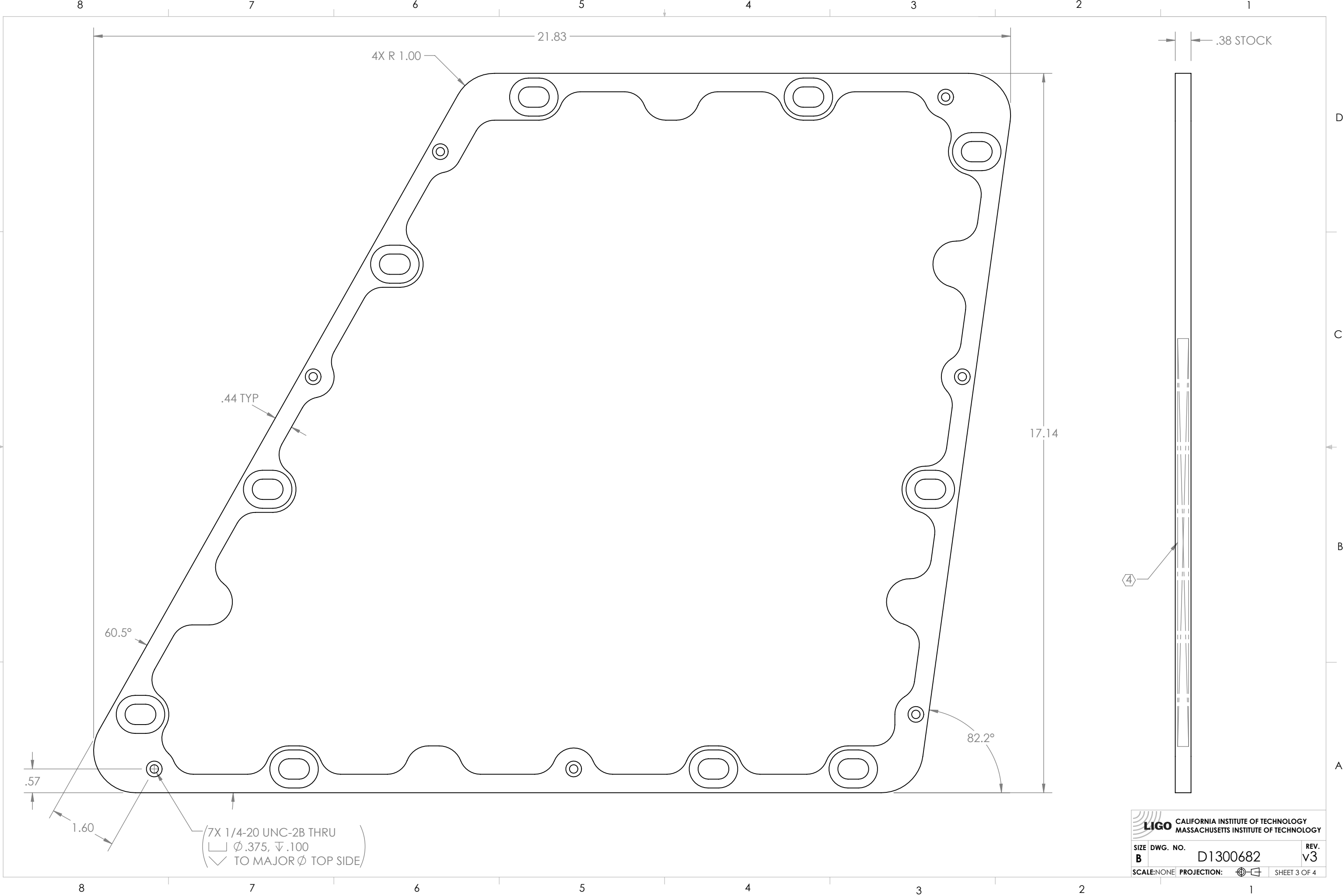


-02

 CALIFORNIA INSTITUTE OF TECHNOLOGY MASSACHUSETTS INSTITUTE OF TECHNOLOGY		
SIZE	DWG. NO.	REV.
B	D1300682	v3
SCALE: NONE	PROJECTION:	SHEET 2 OF 4

8 7 6 5 4 3 2 1

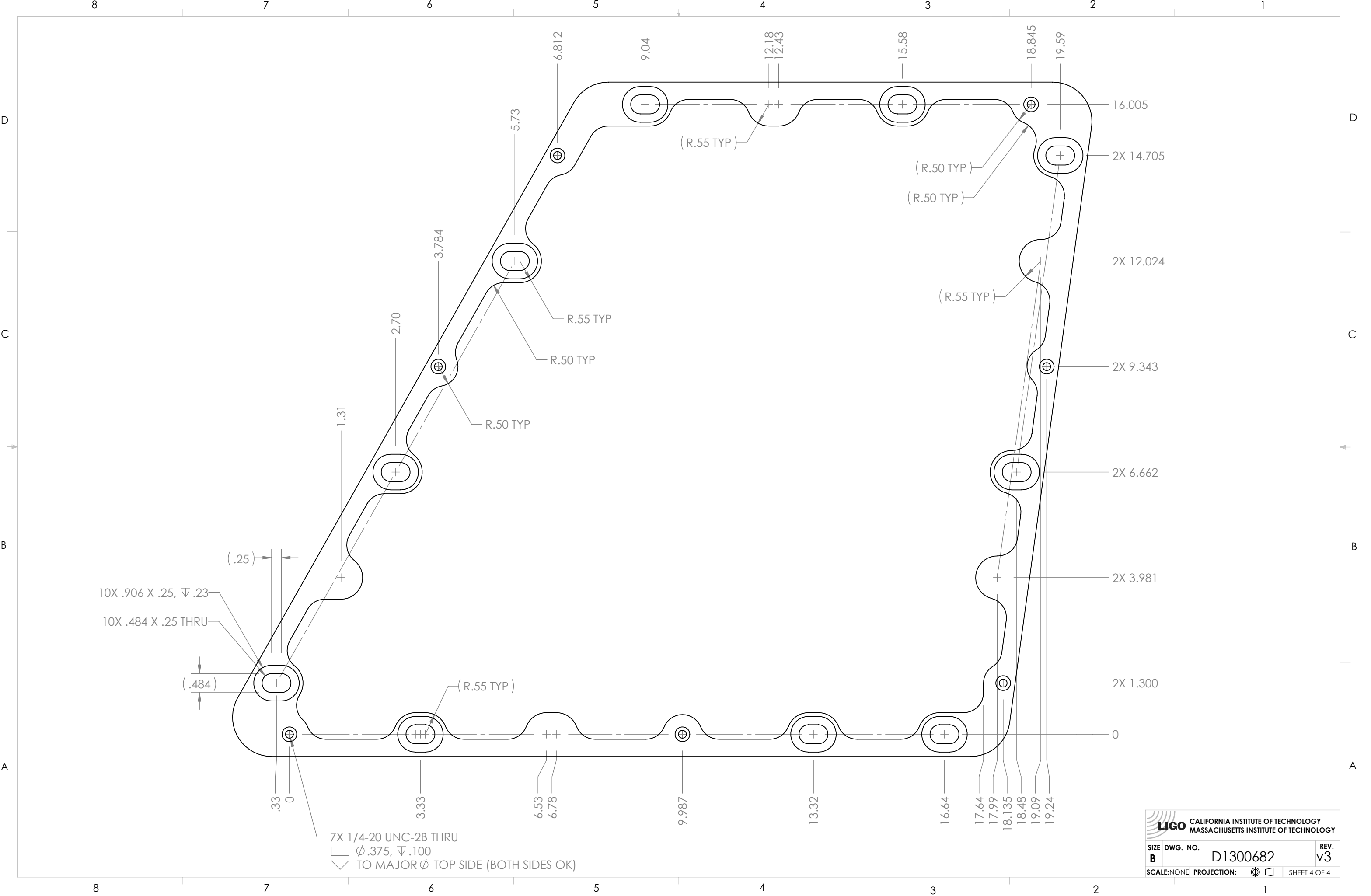
D1300682 aLIGO Pcal Receiver Enclosure Adapter, Front, PART PDM REV: X-033, DRAWING PDM REV: X-013



LIGO CALIFORNIA INSTITUTE OF TECHNOLOGY
 MASSACHUSETTS INSTITUTE OF TECHNOLOGY

SIZE	DWG. NO.	REV.
B	D1300682	v3
SCALE: NONE	PROJECTION:	SHEET 3 OF 4

D1300682 dLIGO Pcal Receiver Enclosure Adapter, Front, PART PDM REV: X-033, DRAWING PDM REV: X-013



LIGO CALIFORNIA INSTITUTE OF TECHNOLOGY
 MASSACHUSETTS INSTITUTE OF TECHNOLOGY

SIZE	DWG. NO.	REV.
B	D1300682	v3
SCALE: NONE	PROJECTION:	SHEET 4 OF 4