

8 7 6 5 4 3 2 1

**NOTES CONTINUED:**

④ SCRIBE, ENGRAVE (A VIBRATORY TOOL MAY BE USED), LASER MARK OR MECHANICALLY STAMP (NO INKS OR DYES) DRAWING PART NUMBER, REVISION, DASH OR 'TYPE' NUMBER, AND A THREE DIGIT SERIAL NUMBER. SERIAL NUMBERS START AT 001 FOR THE FIRST ARTICLE AND PROCEED CONSECUTIVELY. USE MINIMUM 0.12" HIGH CHARACTERS. EXAMPLE: D1300683-v3, TYPE -01, S/N 001

D 5. WEIGHT: 1.58 LB.

6. ALL THROUGH FEATURES MAY BE WATER JET CUT IF PROCESS CAN HOLD TOLERANCES.

⑦ CONFIGURATIONS

- 01: AS SHOWN DETAILED
- 02: MACHINE  $\nabla$  .23 SLOT RECESSES OPPOSITE SIDE  
MACHINE  $\square$   $\phi$  .375 X  $\nabla$  .100 OPPOSITE SIDE  
SEE SHEET 2

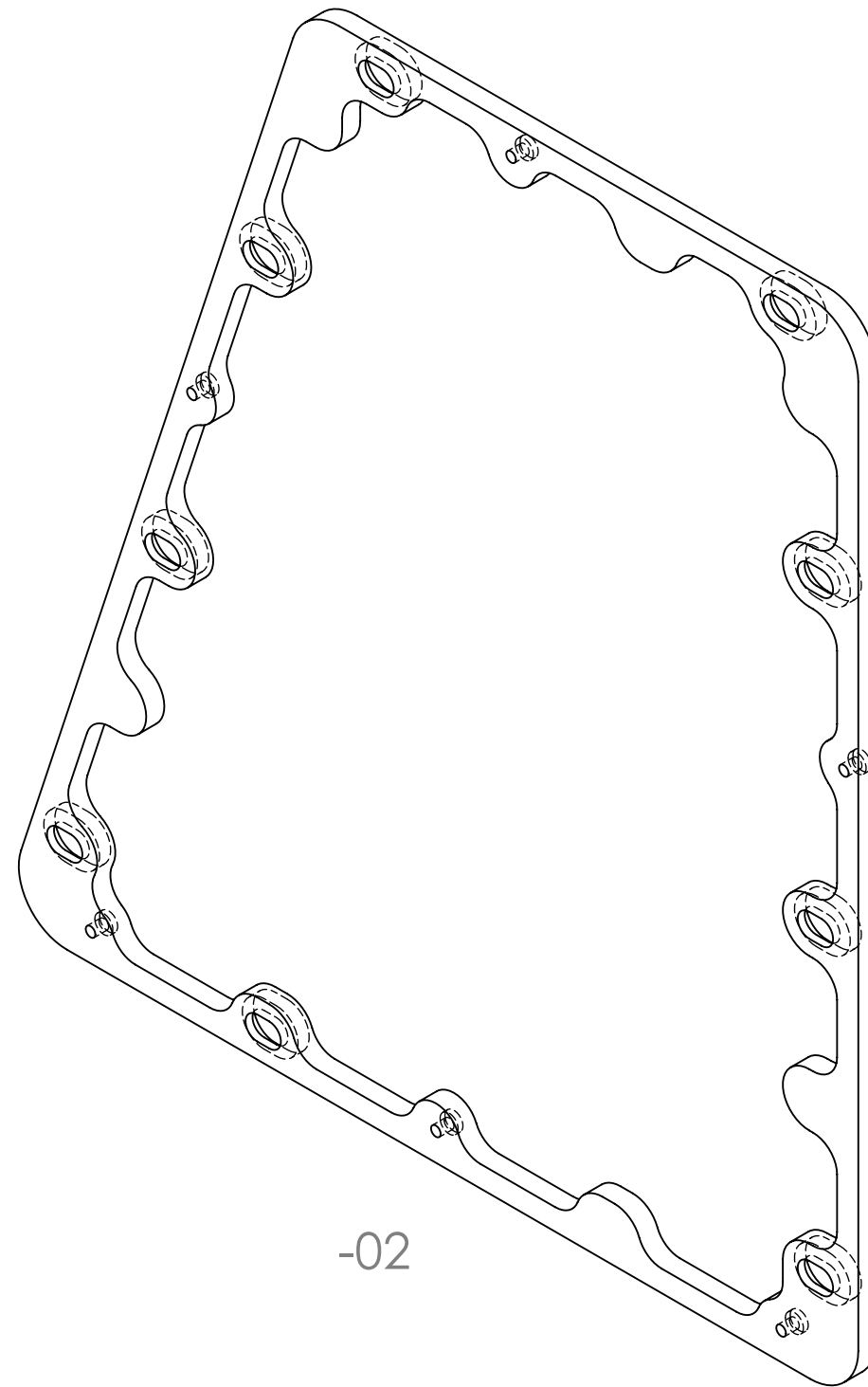
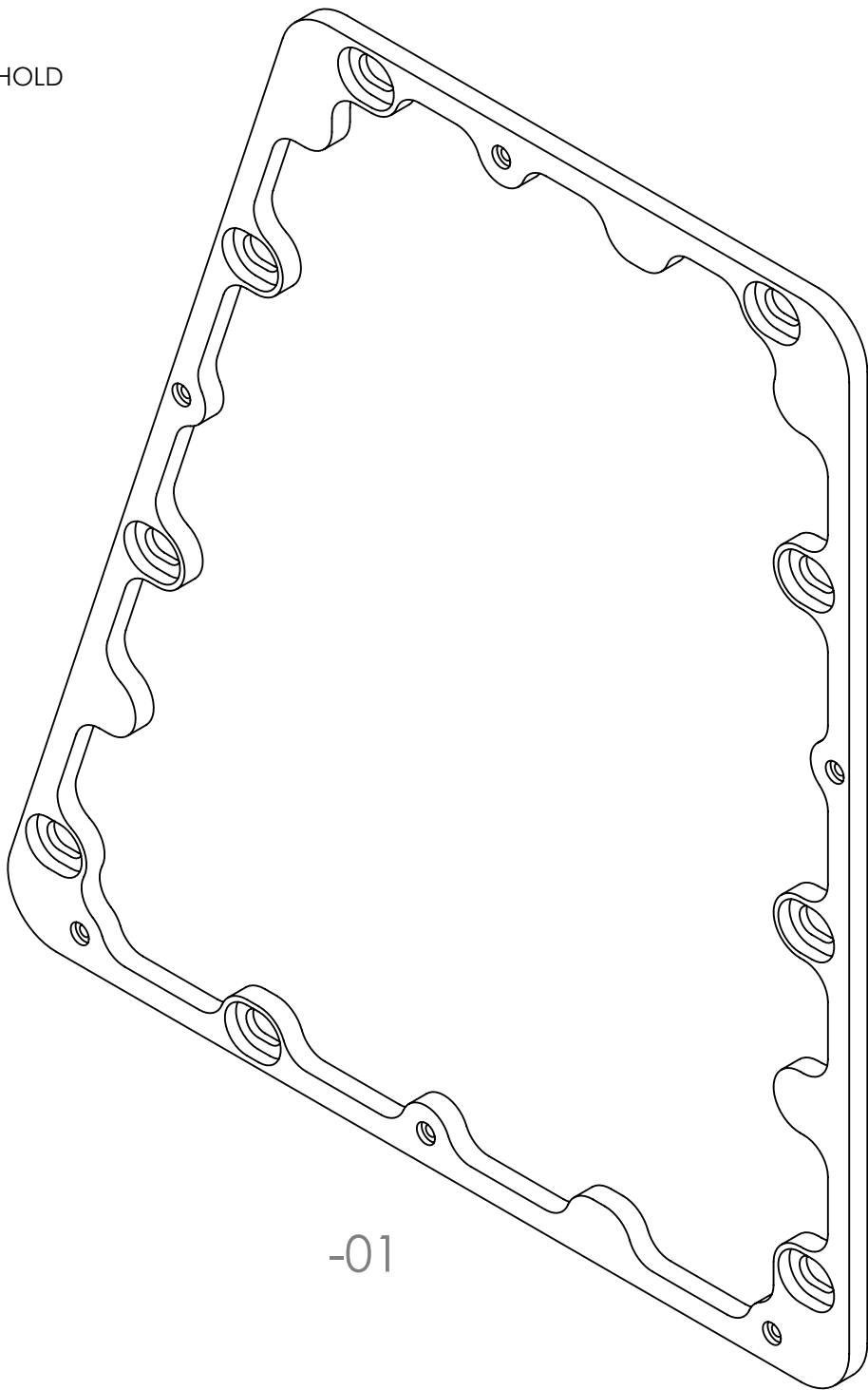
⑧ TUMBLE DEBURR OK.

⑨ BLACK ANODIZE PER MIL-A-8625F, TYPE II, CLASS 2.

10. USAGE

- 01: USE ON D1001330-02 (END-X)
- 02: USE ON D1001325-02 (END-Y)

REV.	DATE	DCN #	BOM #
v1	23 AUG 2013	-	-
v2	03 SEP 2013	-	-
v3	09 SEP 2013	E1300649-x0	-



D1300683 qLIGO Pcal Receiver Enclosure Adapter, Outside, PART PDM REV: X-030, DRAWING PDM REV: X-003

A

A

B

B

C

C

D

D

-01

-02

**NOTES AND TOLERANCES: (UNLESS OTHERWISE SPECIFIED)**

DIMENSIONS ARE IN INCHES  
 TOLERANCES:  
 .XX  $\pm$  .02  
 .XXX  $\pm$  .005  
 ANGULAR  $\pm$  0.1°

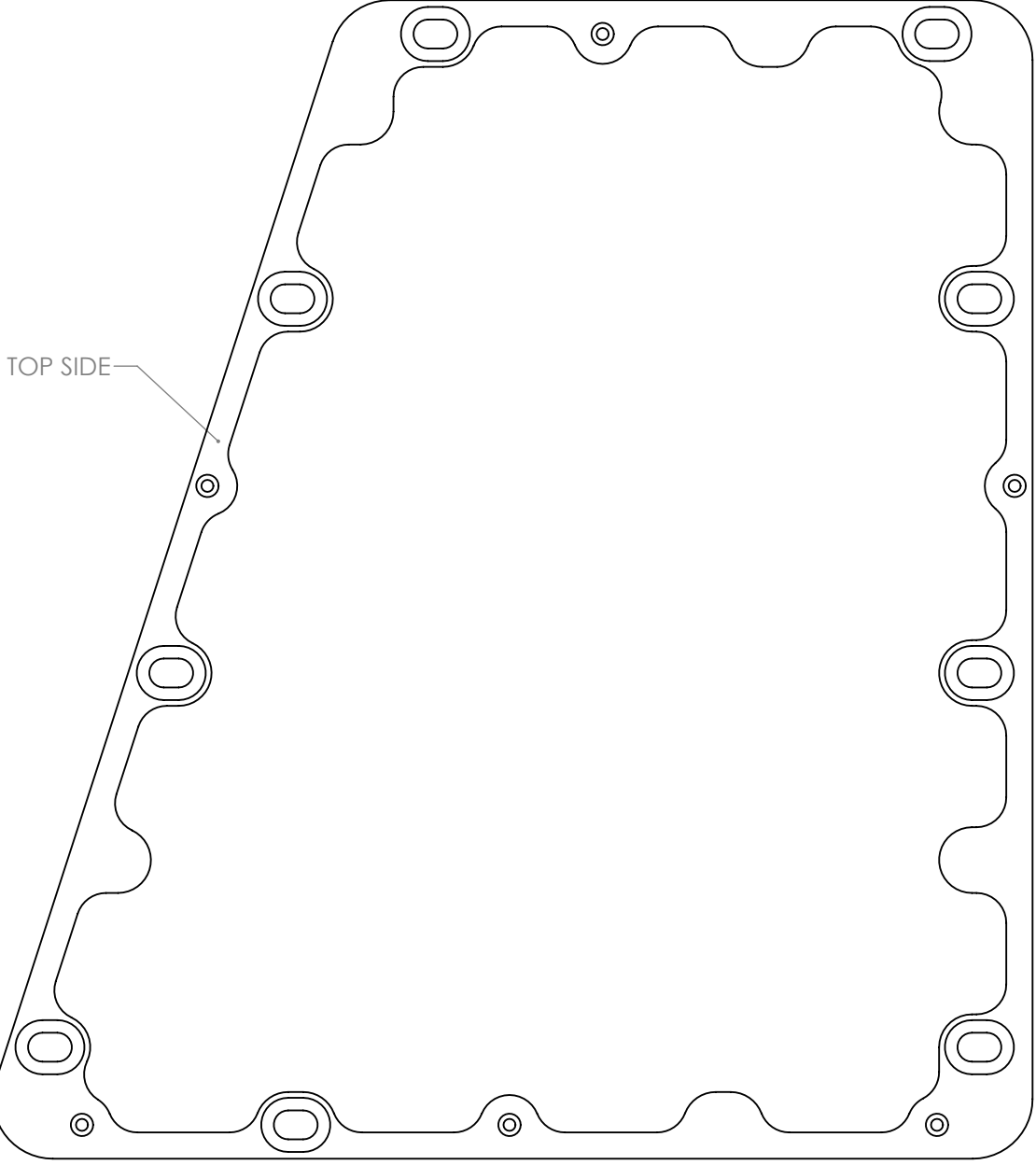
1. INTERPRET DRAWING PER ASME Y14.5-1994.  
 2. BREAK ALL SHARP EDGES, .02 MAX.  
 3. DO NOT SCALE FROM DRAWING.

MATERIAL 6061-T6 Al FINISH N/A  $\mu$ INCH Ra MAX (8)9

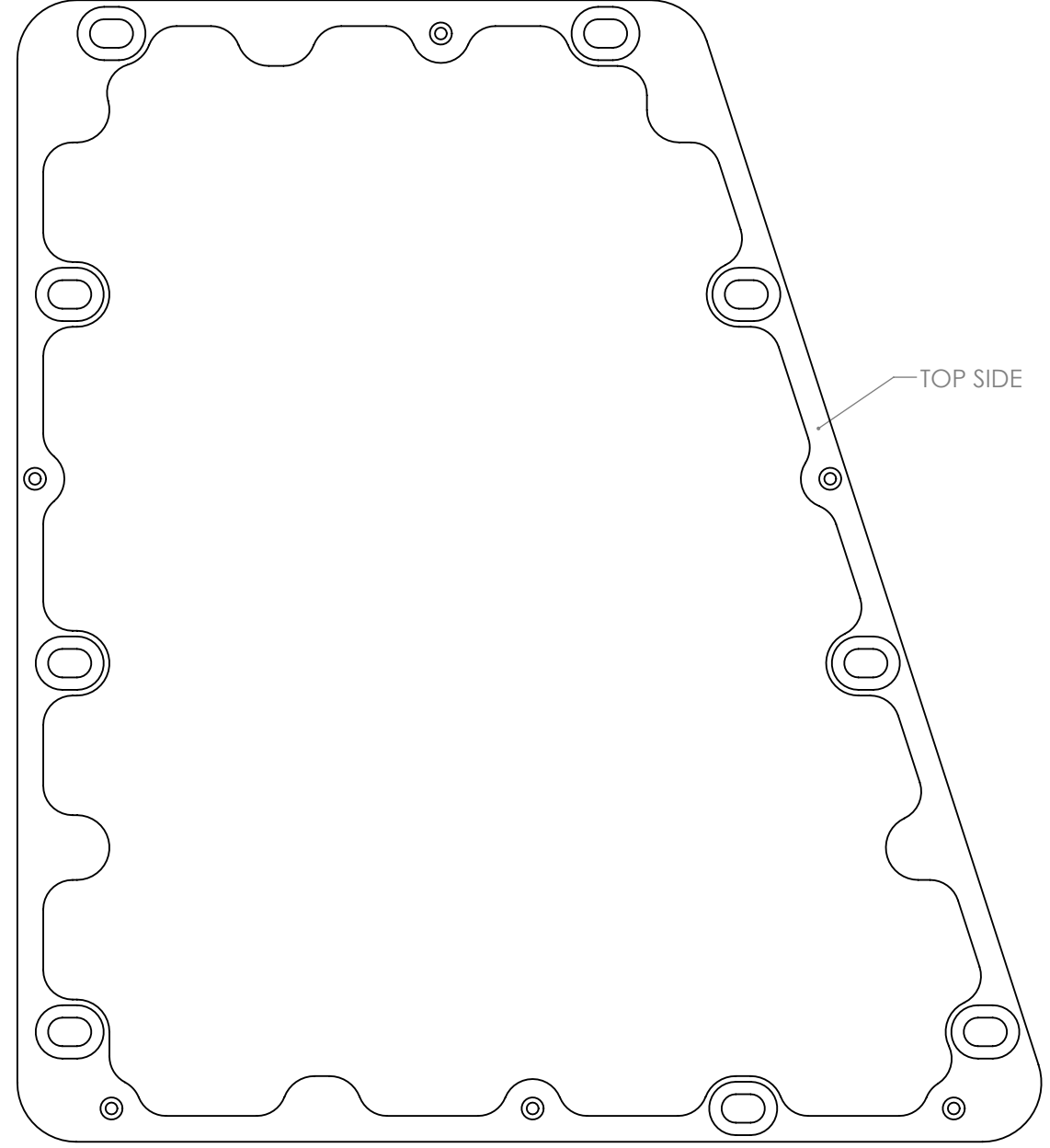
CALIFORNIA INSTITUTE OF TECHNOLOGY MASSACHUSETTS INSTITUTE OF TECHNOLOGY		PART NAME		qLIGO PCAL	
SYSTEM ADVANCED LIGO SUB-SYSTEM AOS		DESIGNER R. SAVAGE DRAFTER C. CONLEY		RECEIVER ENCLOSURE ADAPTER, OUTSIDE	
NEXT ASSY D1001325 D1001330		DATE 12 AUG 2013 DATE 23 AUG 2013		SIZE DWG. NO. B	
		CHECKER SEE DCN		REV. D1300683 v3	
		APPROVAL SEE DCN		SCALE: NONE PROJECTION:  SHEET 1 OF 4	

8 7 6 5 4 3 2 1

D1300683 aLIGO Pcal Receiver Enclosure Adapter, Outside, PART PDM REV: X-030, DRAWING PDM REV: X-003



-01



-02

**LIGO** CALIFORNIA INSTITUTE OF TECHNOLOGY  
MASSACHUSETTS INSTITUTE OF TECHNOLOGY

SIZE	DWG. NO.	REV.
B	D1300683	v3
SCALE: NONE		PROJECTION:
		SHEET 2 OF 4

8 7 6 5 4 3 2 1

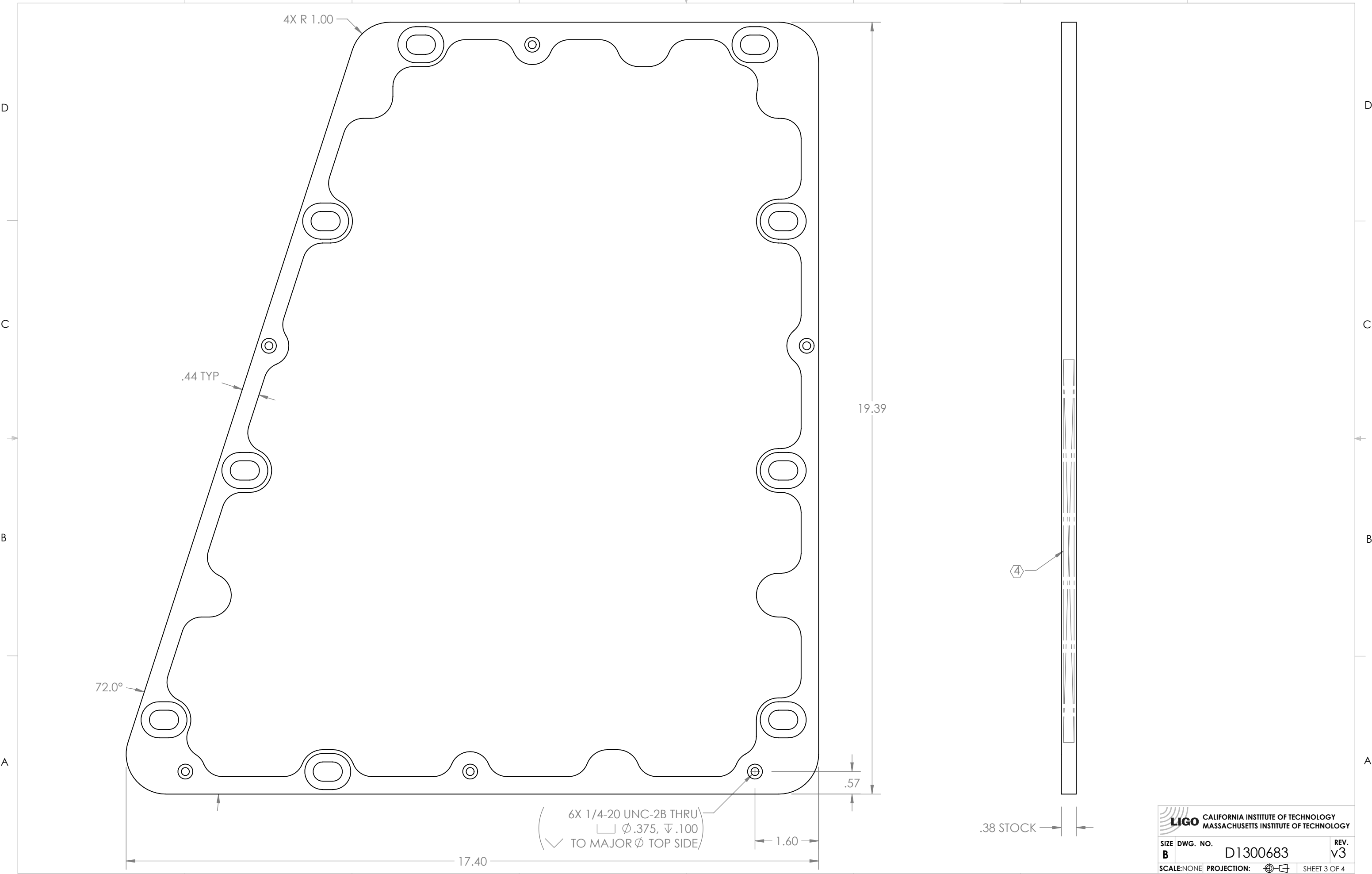
D  
C  
B  
A

D  
C  
B  
A

8 7 6 5 4 3 2 1

D1300683 dLIGO Pcal Receiver Enclosure Adapter, Outside, PART PDM REV: X-030, DRAWING PDM REV: X-003

8 7 6 5 4 3 2 1

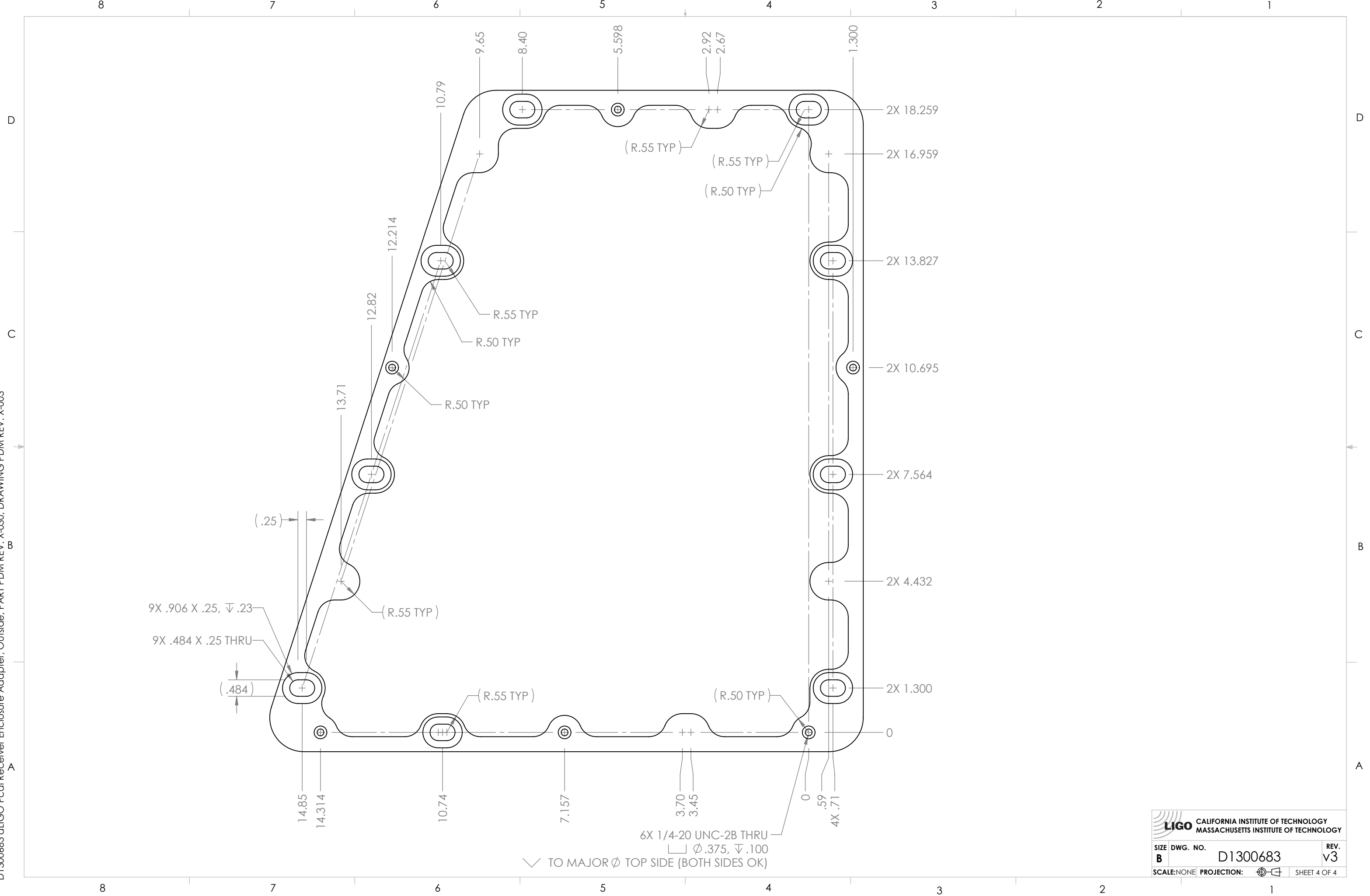


**LIGO** CALIFORNIA INSTITUTE OF TECHNOLOGY  
 MASSACHUSETTS INSTITUTE OF TECHNOLOGY

SIZE	DWG. NO.	REV.
B	D1300683	v3
SCALE: NONE		PROJECTION:
SHEET 3 OF 4		

8 7 6 5 4 3 2 1

D1300683 dLIGO Pcal Receiver Enclosure Adapter, Outside, PART PDM REV: X-030, DRAWING PDM REV: X-003



**LIGO** CALIFORNIA INSTITUTE OF TECHNOLOGY  
 MASSACHUSETTS INSTITUTE OF TECHNOLOGY

SIZE	DWG. NO.	REV.
B	D1300683	v3
SCALE: NONE		PROJECTION:
		SHEET 4 OF 4

$\nabla$  TO MAJOR  $\phi$  TOP SIDE (BOTH SIDES OK)