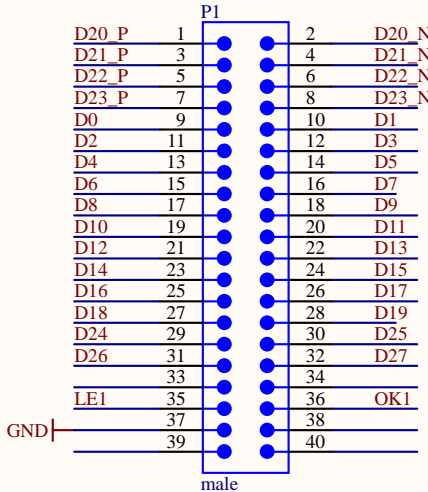
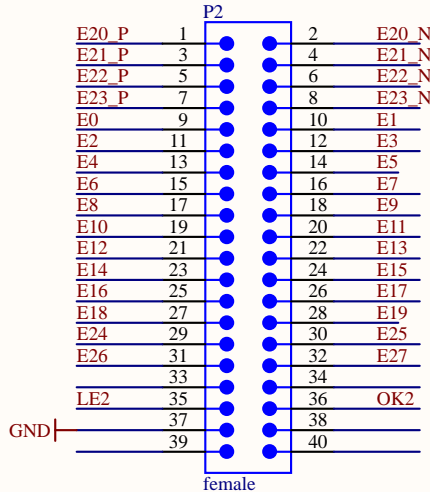


10B6044



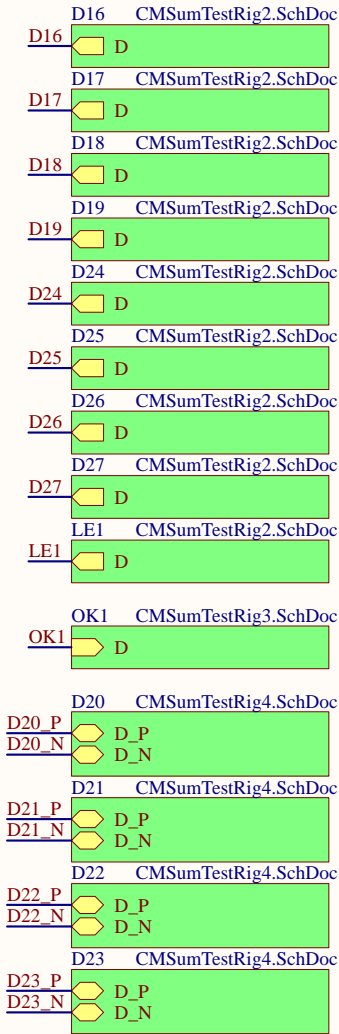
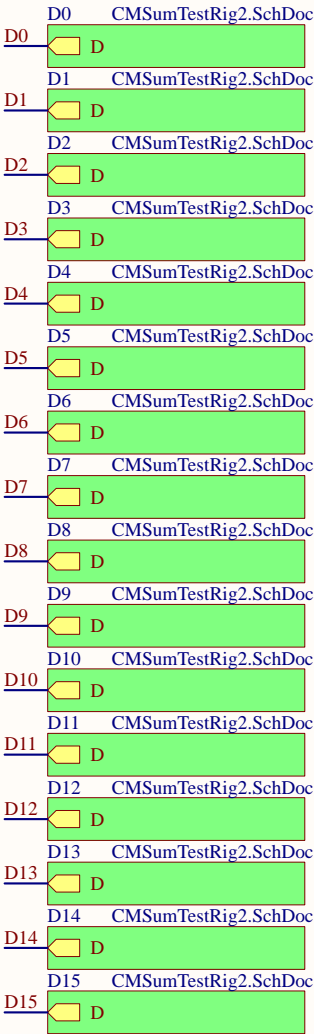
- | | |
|-------------------------|-----------------|
| H1 | Handle, 3" |
| H2 | Handle, 3" |
| Mouser 534-9109 | |
| H3 | Ferrule |
| H4 | Ferrule |
| H5 | Ferrule |
| H6 | Ferrule |
| Mouser 534-9121 | |
| M1 | #6-32 3/8" flat |
| M2 | #6-32 3/8" flat |
| M3 | #6-32 3/8" flat |
| M4 | #6-32 3/8" flat |
| McMaster-Carr 91099A215 | |
| H7 | Standoff M-F |
| H8 | Standoff M-F |
| H9 | Standoff M-F |
| H10 | Standoff M-F |
| H11 | Standoff M-F |
| H12 | Standoff M-F |
| Newark 56K3066 | |

- | | |
|----------------|-----------------|
| E1 | BNC lock washer |
| E2 | BNC lock washer |
| E3 | BNC lock washer |
| E4 | BNC lock washer |
| E5 | BNC lock washer |
| E6 | BNC lock washer |
| E7 | BNC lock washer |
| E8 | BNC lock washer |
| Newark 78M7215 | |
| H13 | Standoff F-F |
| H14 | Standoff F-F |
| H15 | Standoff F-F |
| H16 | Standoff F-F |
| H17 | Standoff F-F |
| H18 | Standoff F-F |
| Newark 56K3039 | |

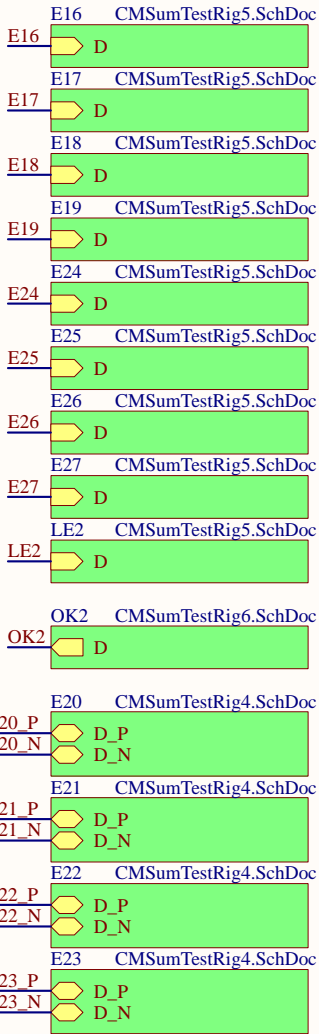
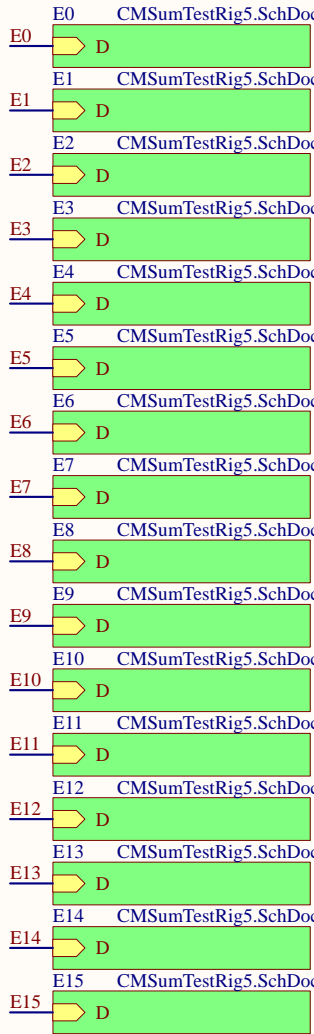
- | | |
|----------------|---------|
| E9 | BNC nut |
| E10 | BNC nut |
| E11 | BNC nut |
| E12 | BNC nut |
| E13 | BNC nut |
| E14 | BNC nut |
| E15 | BNC nut |
| E16 | BNC nut |
| Newark 78M7214 | |

- | | |
|-------------------------|--------------|
| PN4 | Front Panel |
| LIGO | |
| D1300789-v1 | |
| PN5 | Rear Panel |
| LIGO | |
| D1300790-v1 | |
| M5 | M4-8mm, flat |
| M6 | M4-8mm, flat |
| M7 | M4-8mm, flat |
| M8 | M4-8mm, flat |
| M9 | M4-8mm, flat |
| M10 | M4-8mm, flat |
| McMaster-Carr 91420A218 | |

- | | |
|----------------|-------------|
| PN6 | 40 pin IDC |
| Newark 79M7223 | |
| PN7 | DB37 male |
| Newark 95F9672 | |
| PN8 | DB37 female |
| Newark 94F7999 | |
| PN9 | Jack screw |
| PN10 | Jack screw |
| Newark 80K5431 | |
| PN1 | Banana jack |
| Newark 39F1574 | |
| PN2 | Banana jack |
| Newark 39F1575 | |



Digital Inputs:
D[0] : Polarity input 1
D[1] : Polarity input 2
D[2] : Input 1 enable
D[3] : Input 2 enable
D[9.. 4]: Gain slider input 1
D[15..10]: Gain slider input 2
D[16] : Excitation switch
D[17] : Compensation
D[18] : Filter enable
D[19] : Option enable
D[24] : Input 1 filter enable
D[25] : Input 1 option enable
D[26] : Excitation dewhitinging 1
D[27] : Excitation dewhitinging 2
LE : Latch enable

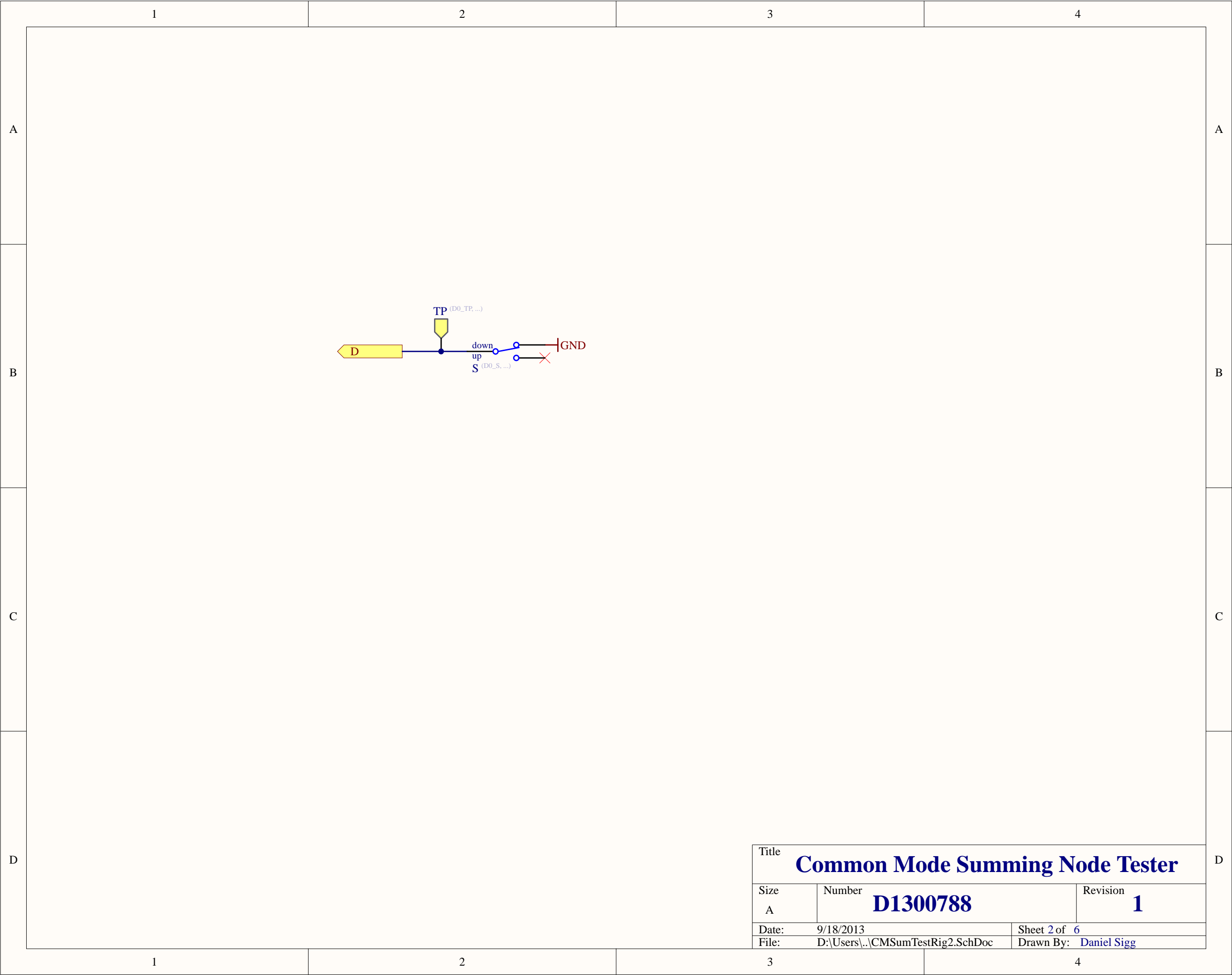


Digital Outputs:
OK : Voltages are within range

Analog Inputs:
D[23] : Offset adjust

Analog Outputs:
D[20] : Input 1 monitor
D[21] : Input 2 monitor
D[22] : Sum monitor

Title Common Mode Summing Node Tester		
Size B	Number D1300788	Revision 1
Date:	9/18/2013	Sheet 1 of 6
File:	D:\Users\...\CMSumTestRig1.SchDoc	Drawn By: Daniel Sigg



Title			Common Mode Summing Node Tester	
Size	Number		Revision	
A	D1300788		1	
Date:	9/18/2013		Sheet 2 of 6	
File:	D:\Users\...\CMSumTestRig2.SchDoc		Drawn By: Daniel Sigg	

A

B

C

D

1

2

3

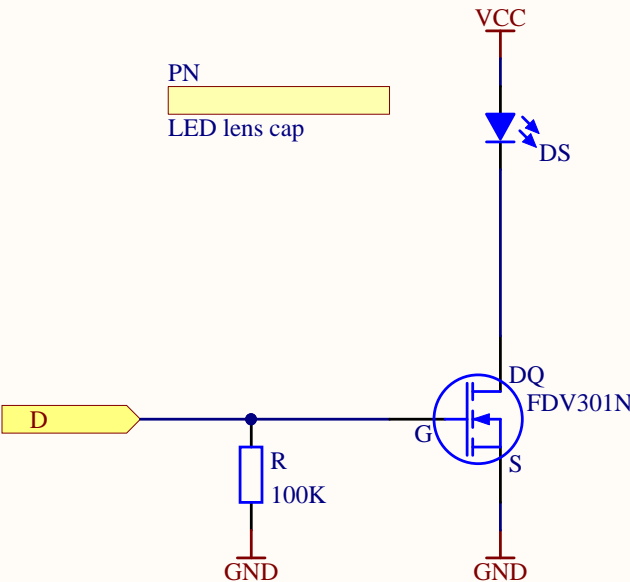
4

A

B

C

D



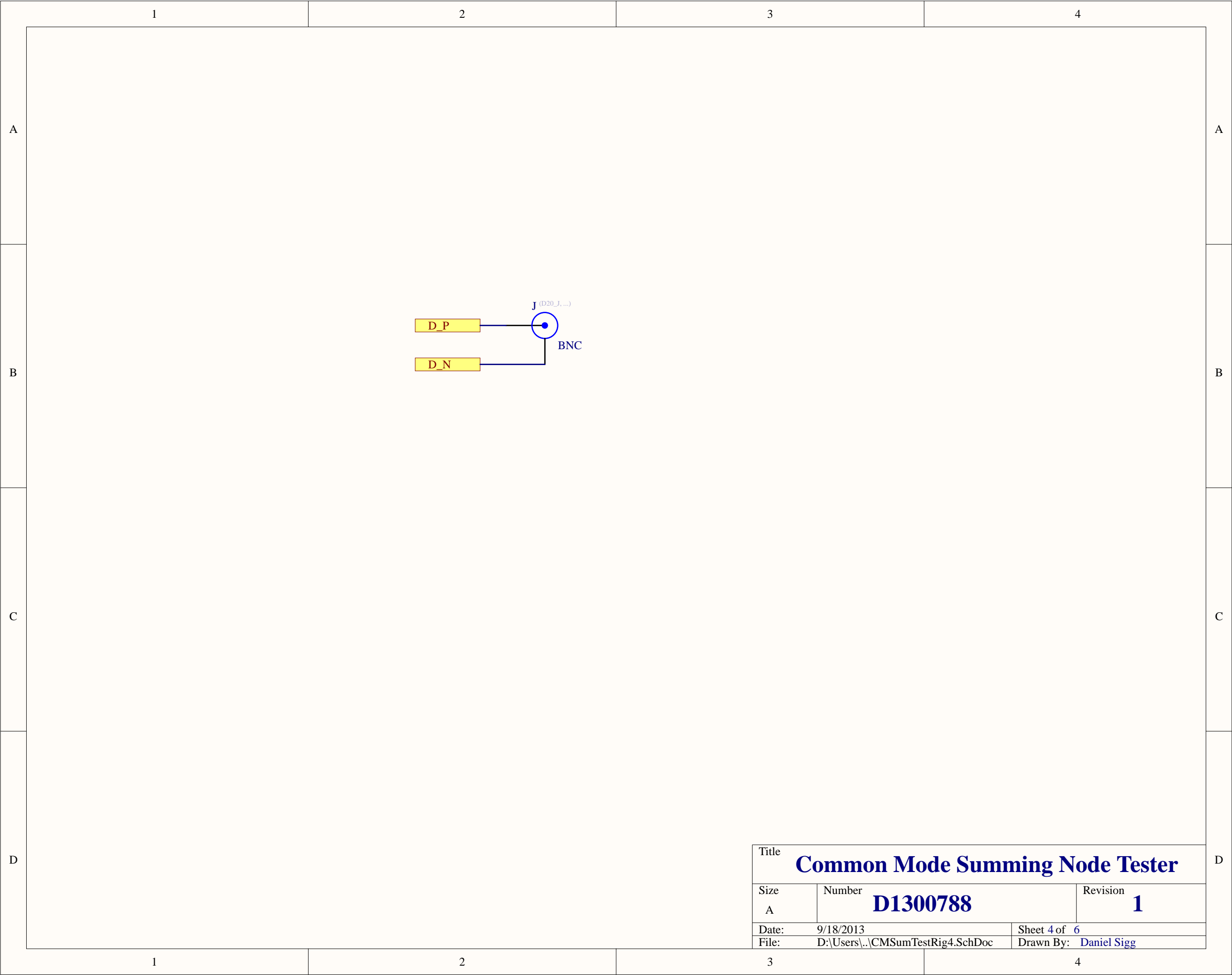
Title			Common Mode Summing Node Tester		
Size	Number			Revision	
A	D1300788			1	
Date:	9/18/2013			Sheet 3 of 6	
File:	D:\Users\...\CMSumTestRig3.SchDoc			Drawn By: Daniel Sigg	

1

2

3

4



Title			Common Mode Summing Node Tester	
Size	Number		Revision	
A	D1300788		1	
Date:	9/18/2013		Sheet 4 of 6	
File:	D:\Users\...\CMSumTestRig4.SchDoc		Drawn By: Daniel Sigg	

A

B

C

D

1

2

3

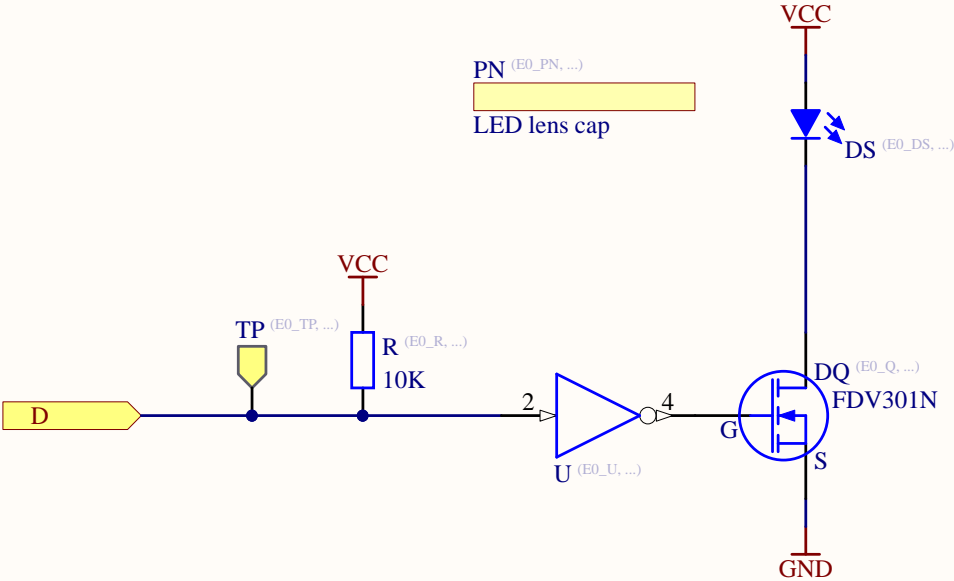
4

A

B

C

D



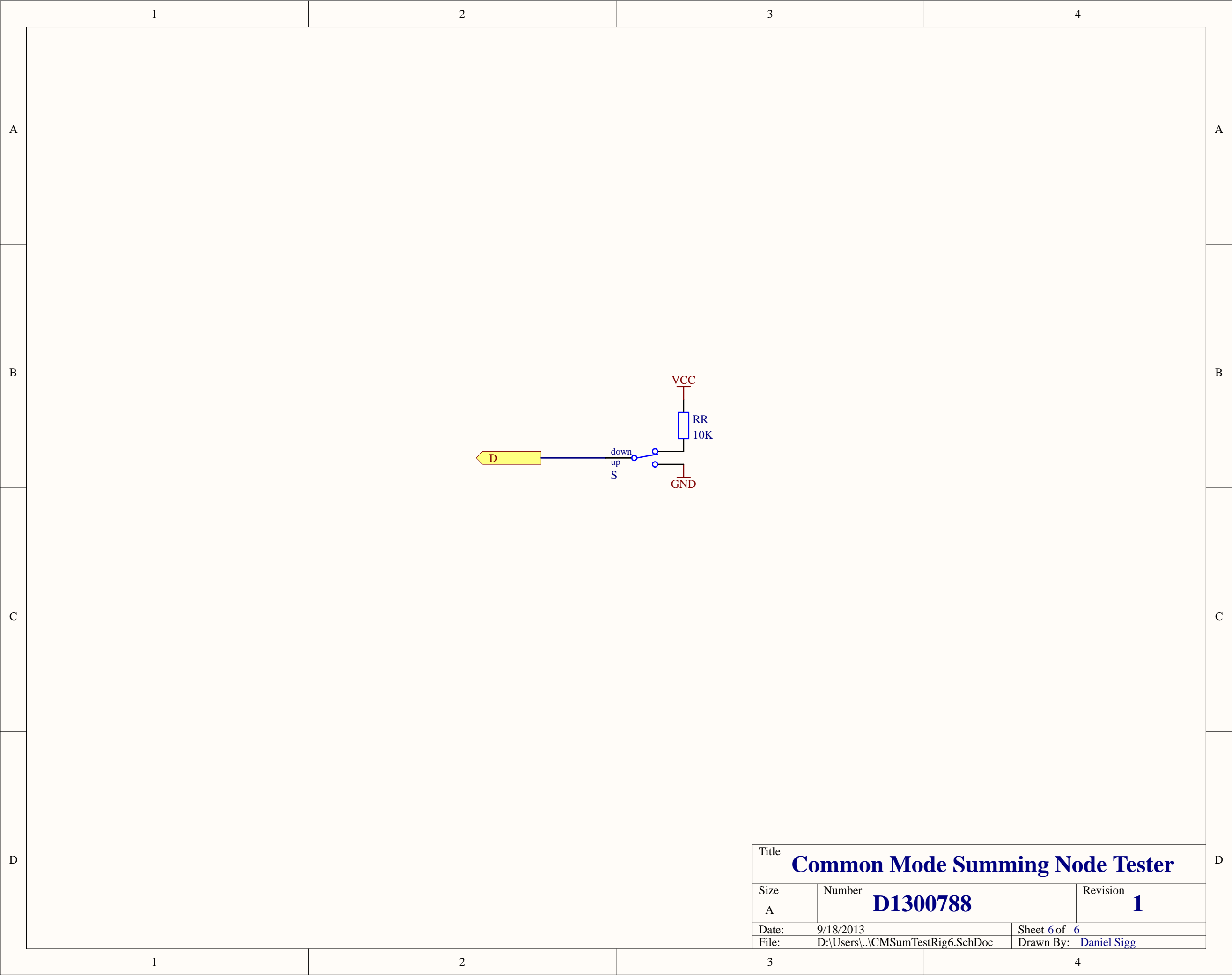
Title			Common Mode Summing Node Tester	
Size	Number		Revision	
A	D1300788		1	
Date:	9/18/2013		Sheet 5 of 6	
File:	D:\Users\...\CMSumTestRig5.SchDoc		Drawn By: Daniel Sigg	

1

2

3

4



Title			Common Mode Summing Node Tester	
Size	Number		Revision	
A	D1300788		1	
Date:	9/18/2013		Sheet 6 of 6	
File:	D:\Users\...\CMSumTestRig6.SchDoc		Drawn By: Daniel Sigg	