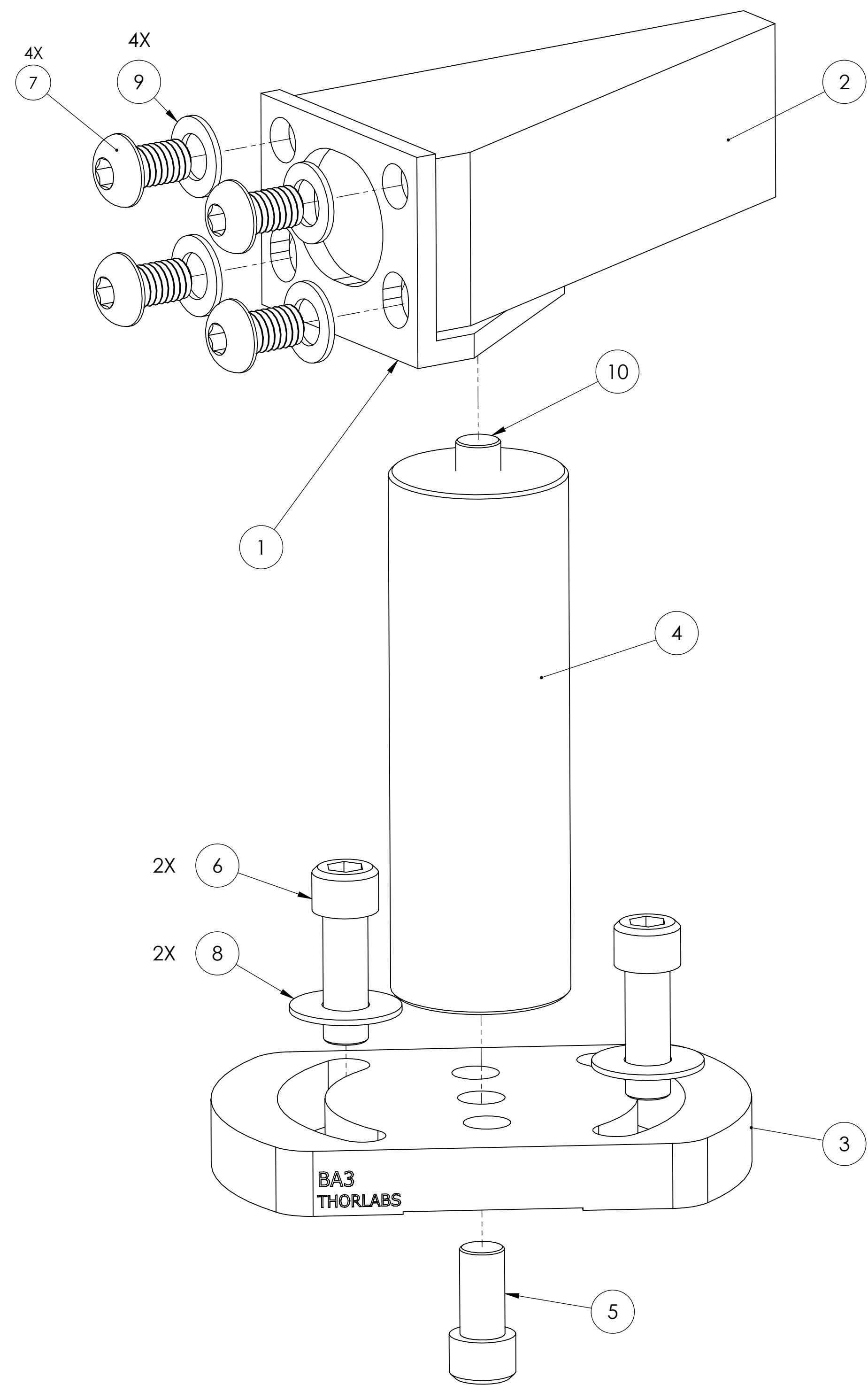
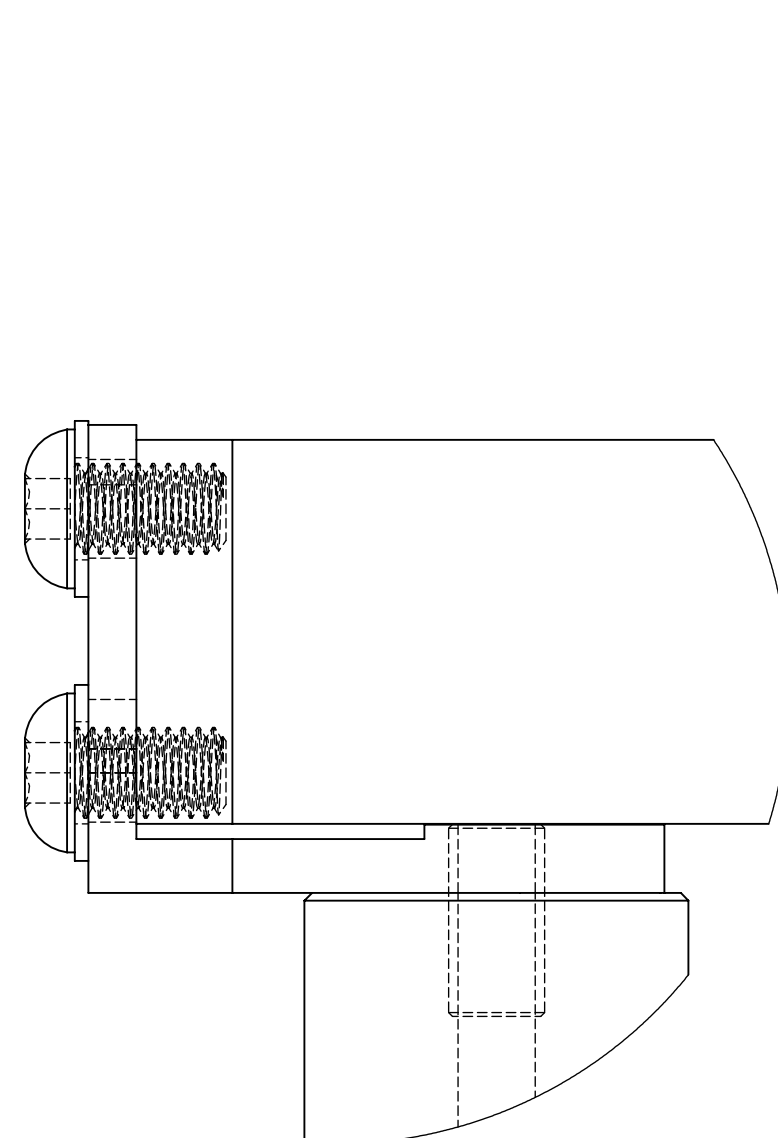


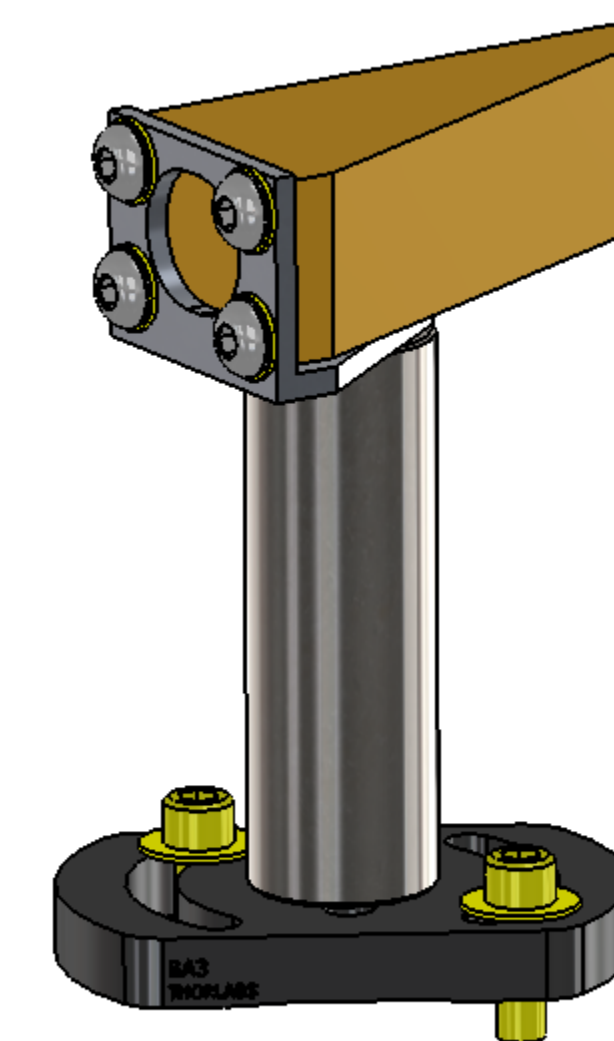
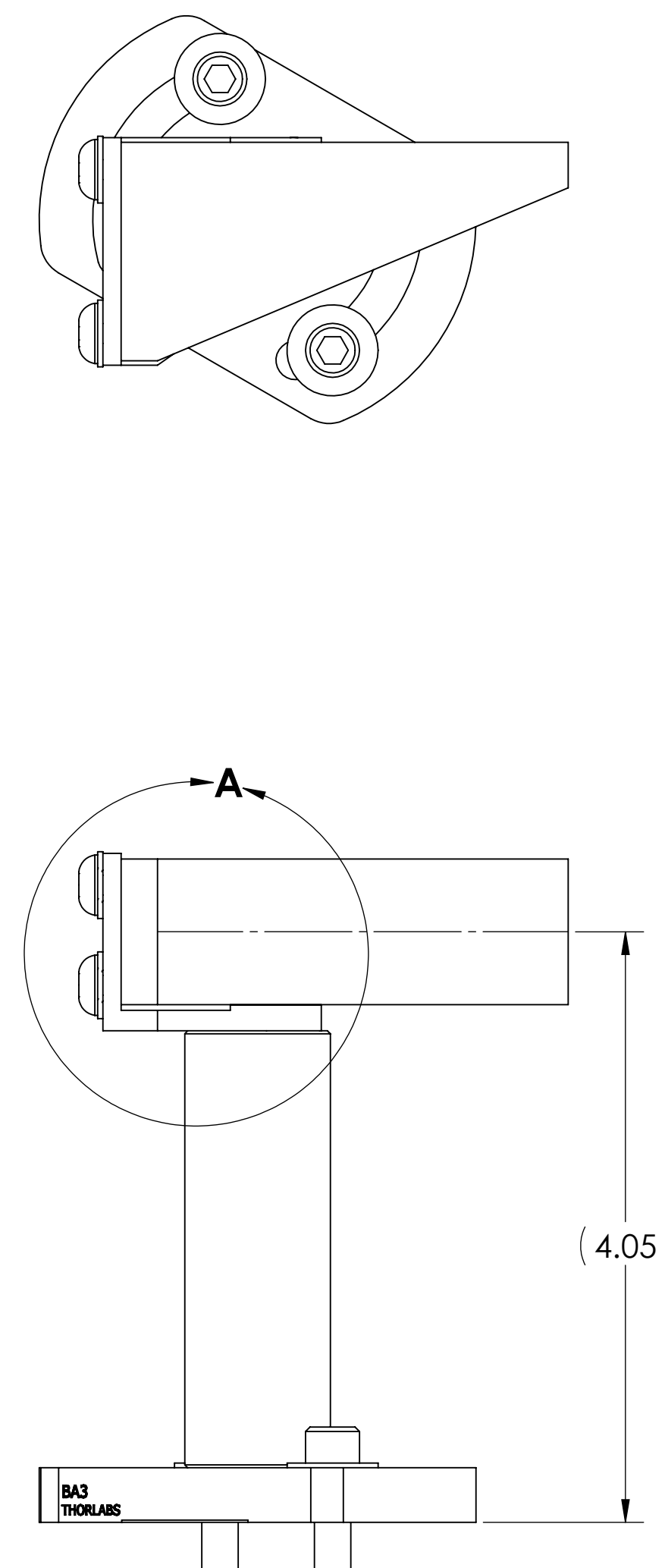
REV.	DATE	DCN #	DRAWING TREE #
-v1	24-FEB-2014	E1400038	E1300255



**EXPLODED ISO VIEW
SCALE 2:1**



**DETAIL A
SCALE 2 : 1**



**ISO VIEW
SCALE 1:1**

ITEM NO.	PART NUMBER	DESCRIPTION	MATERIAL	REQ	SPARE	TOTAL
10	95412A538	18-8 SSSL THREADED STUD, 1/4-20 X 1 1/2-IN LONG	18-8 SSSL	1	1	2
9	90945A760	MS 15795 FLAT WASHERS, .266ID, .458 OD, .03 THK	300 SSSL	4	1	5
8	98019A355	MS 15795 FLAT WASHERS, .266 ID, .625 OD, .05 THK	300 SSSL	2	2	4
7	92095A224	BHSCS, M6 X 10MM LONG	18-8 SSSL	4	1	5
6	C-2012-N	SHCS, 1/4-20 UNC-2A X 0.75 LONG	18-8 SSSL	2	2	4
5	C-2008-NC	SCREW, SOCKET HEAD CAP, 1/4-20 UNC-2A X 0.5 LONG, FULLY THREADED	18-8 SSSL	1	1	2
4	PS-3E-T	3-IN TALL, 1-IN DIA POST, 1/4-20 TAPS_BOTH ENDS	AISI 304	1	0	1
3	BA3	BASE, 1/4-20 CLEARANCE MOUNTING HOLES, .375" THK	Al	1	0	1
2	TFP-Z-25x64x3M	THIN FILM POLARIZER, 10.6 um, MOUNTED	MULTI	1	0	1
1	D1400012	ALTERNATIVE TFP MOUNT, CUSTOM	6061 Alloy	1	0	1

PARTS LIST

NOTES AND TOLERANCES: (UNLESS OTHERWISE SPECIFIED)		LIGO CALIFORNIA INSTITUTE OF TECHNOLOGY MASSACHUSETTS INSTITUTE OF TECHNOLOGY		PART NAME ADAPTED TFP MOUNT ASSEMBLY			
DIMENSIONS ARE IN INCHES		1. INTERPRET DRAWING PER ASME Y14.5-1994. 2. DO NOT SCALE FROM DRAWING.		SYSTEM	SUB-SYSTEM		DESIGNER
TOLERANCES: .XX ± .XXX ±		MATERIAL		ADVANCED LIGO		AOS	M.JACOBSON
ANGULAR ± °		FINISH		NEXT ASSY		D	24-JAN-2014
		N/A		D1300294		D	24-JAN-2014
		N/A μinch				D	24-JAN-2014
						APPROVAL	A.JHEPTONSTALL
						SCALE: 1:1	PROJECTION:
						SHEET 1 OF 1	

D1400013_ADAPTED_TFP_MOUNT_ASSEMBLY_PART_FDM_REV_X003_DRAWING_FDM_REV_X004