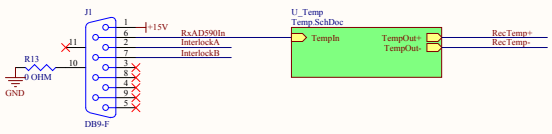
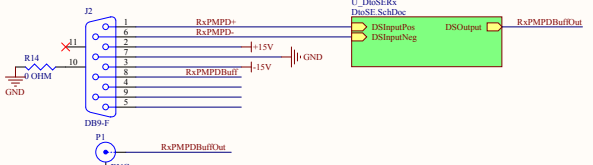


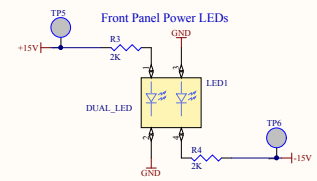
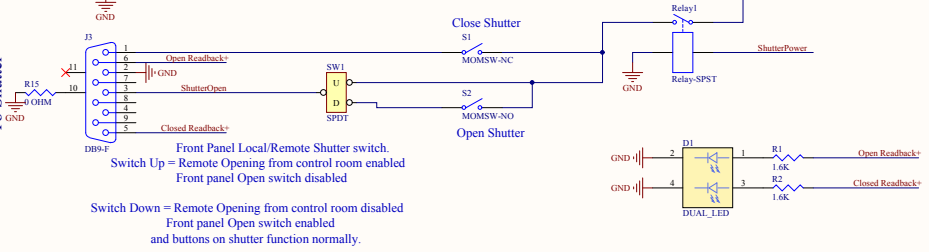
**Rx Temperature and Covers**



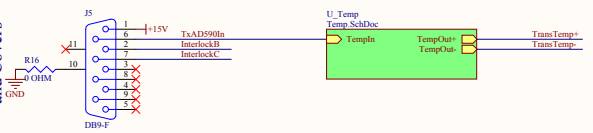
**Rx Mon PD**



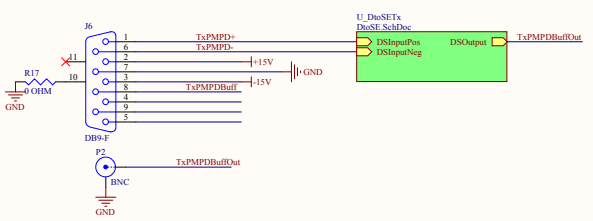
**To Shutter**



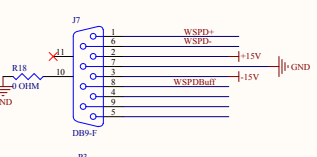
**Tx Temperature and Covers**



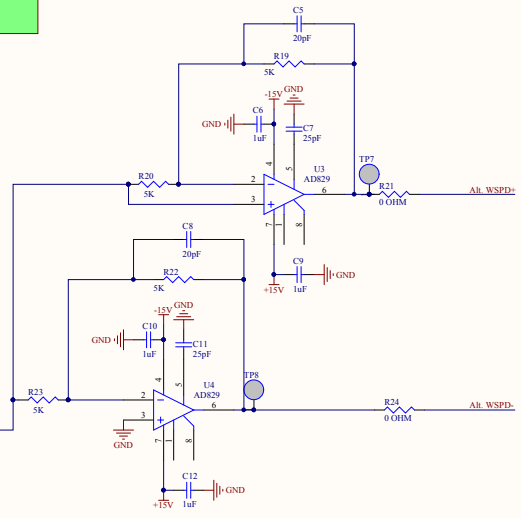
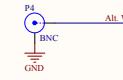
**Laser Power Mon PD**



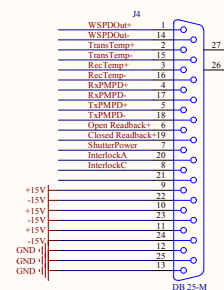
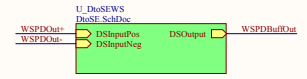
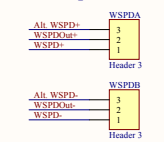
**Working Standard PD**



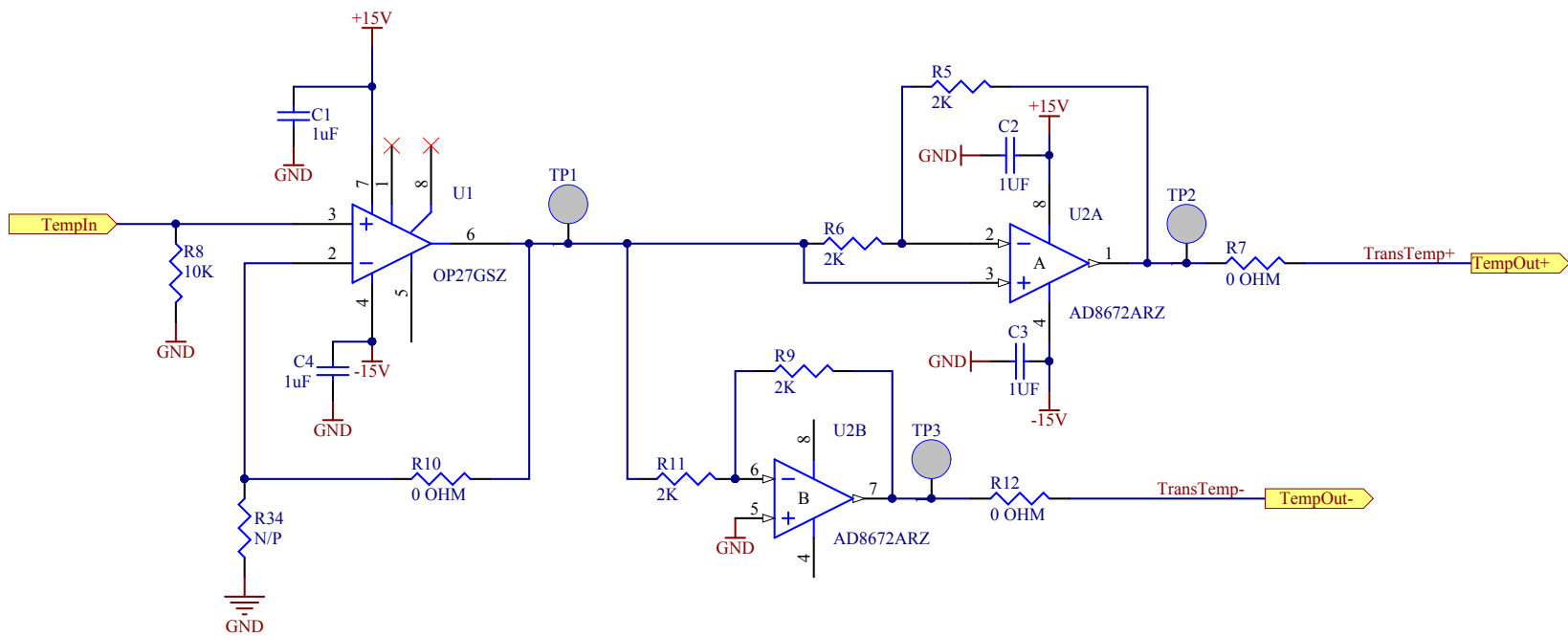
**Alternate Working Standard Input (From Keithley Amplifier)**



**WSPD Input Selection Jumpers**



**Out to Back Board**



Title **PCal Interface Temperature SToD**

Size: **A**

DCC Number: **D1400152**

*Ligo Project*  
 California Institute of Technology  
 Massachusetts Institute of Technology

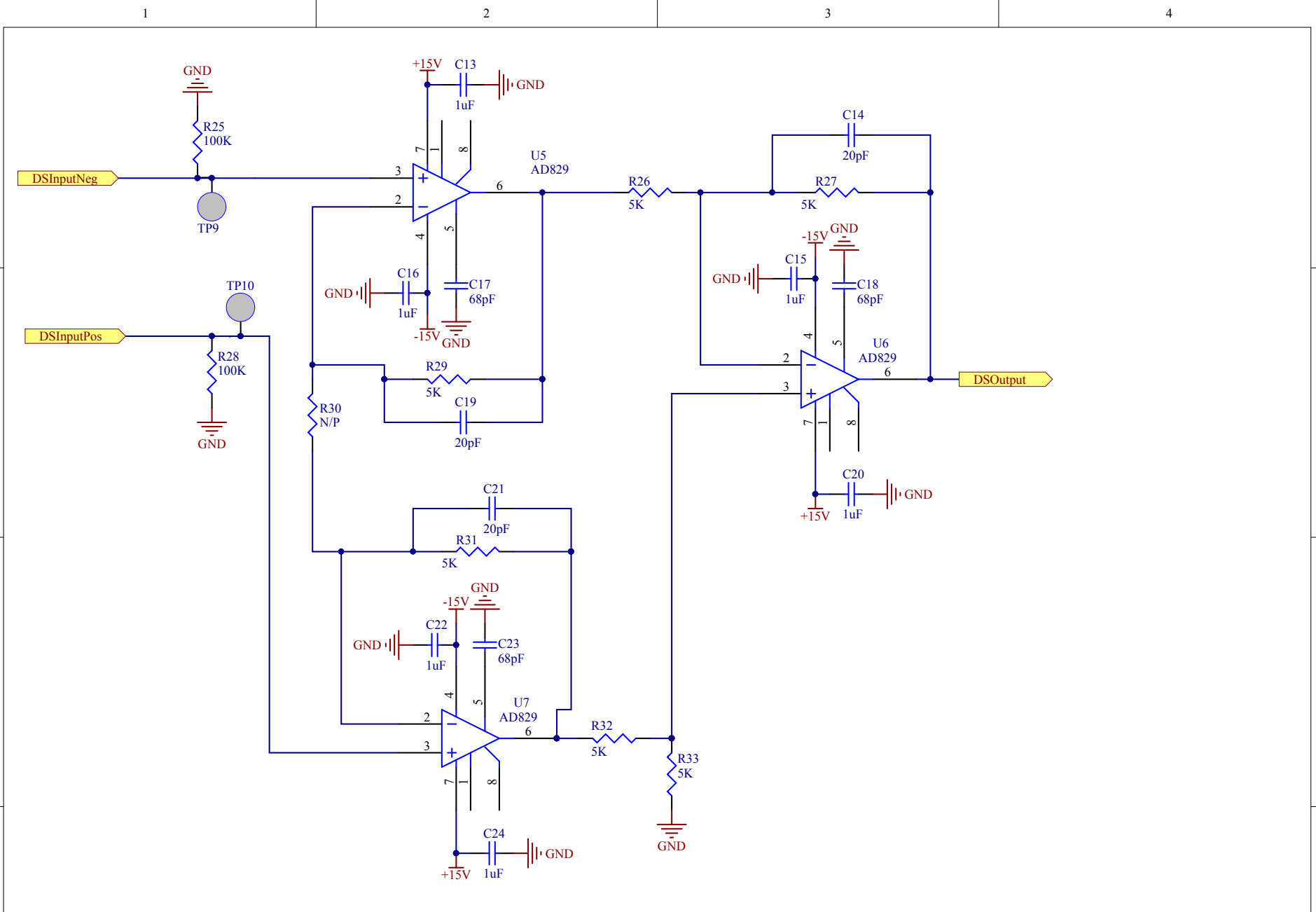



Drawn by:  
**Ben Abbott**

Date: **6/10/2014**

Revision: **v2**

File: C:\restored\Ben\AOS\PCal Stuff\PCal Interface Chassis\Temp.SchDoc Time: 10:59:00 AM Sheet 2 of 3



Title <b>Differential to Single Ended</b>			
Size: A	DCC Number: D1400152		<i>Ligo Project</i> California Institute of Technology Massachusetts Institute of Technology 
Drawn by: Ben Abbott	Date: 6/10/2014	Revision: v2	
File: C:\restored\Ben\AOS\PCal Stuff\PCal Interface Chassis\DtoSE.SchDoc Time: 10:59:00 AM Sheet 3 of 3			

