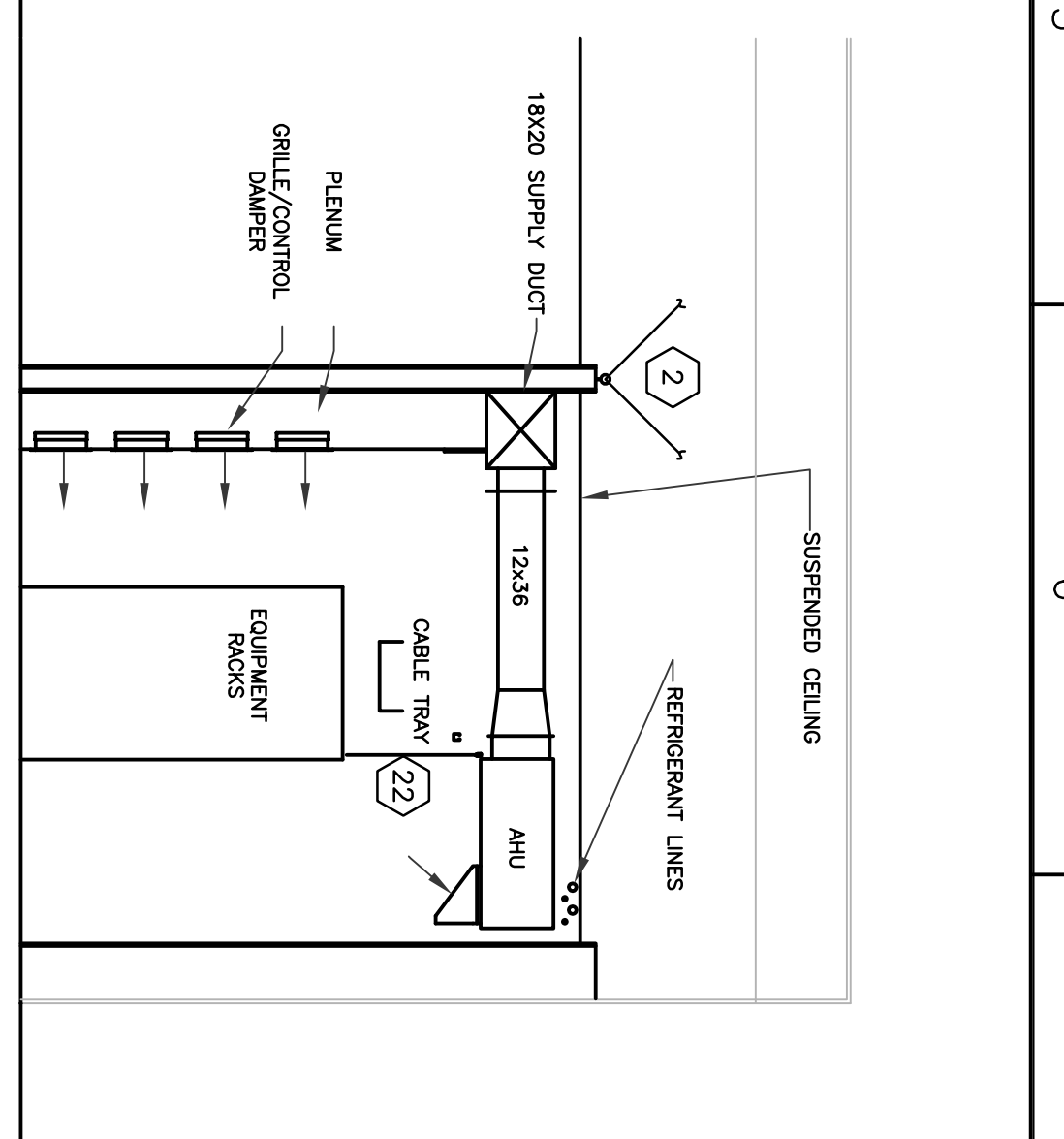
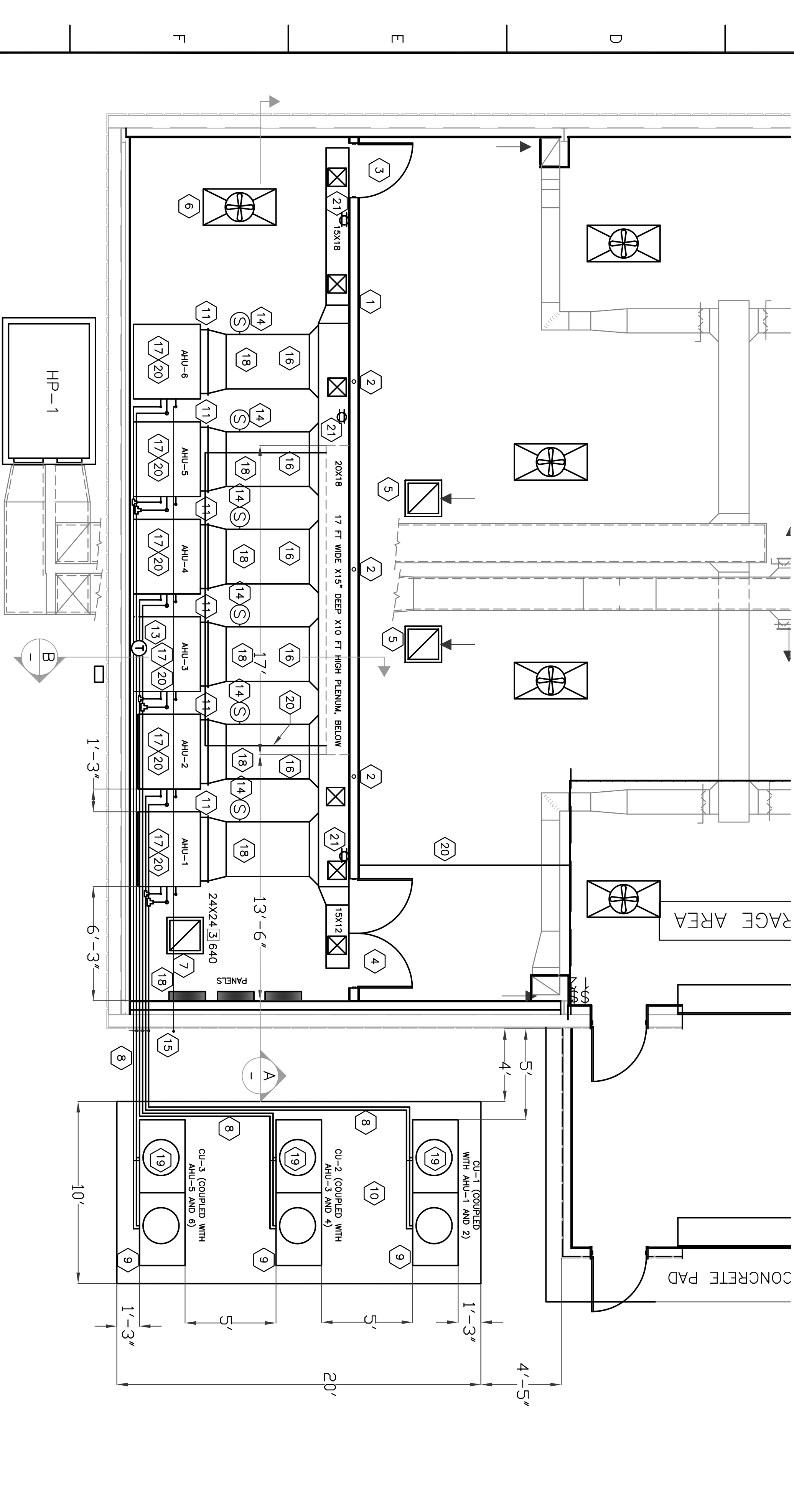


SECTION A
SCALE: 1/4" = 1'-0"



SECTION B
SCALE: 1/4" = 1'-0"

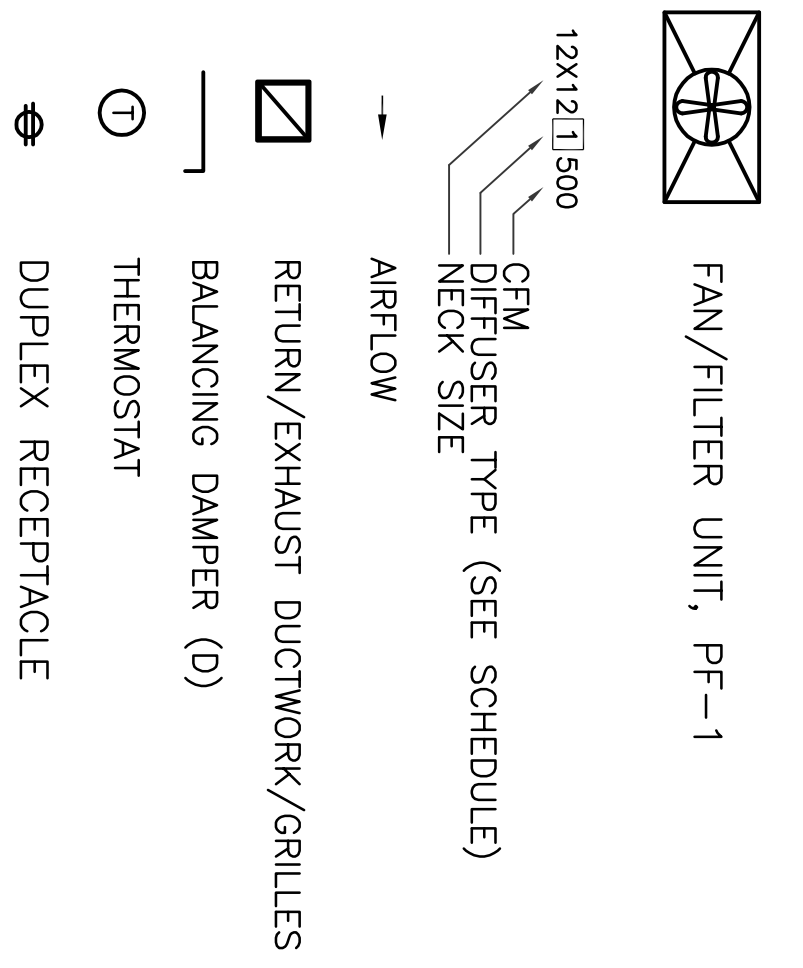


FLOOR PLAN
SCALE: 1/4" = 1'-0"

CONSTRUCTION NOTES

- 1 5/8" GMB ON 6" METAL FRAMING SPACED 16" O.C. PARTITION WALL BETWEEN AREAS SHALL BE EXTENDED TO 4 INCHES ABOVE THE SUSPENDED CEILING, FINISH TAPED, BOTH SIDES, AND PAINTED BOTH SIDES WITH SEMIGLOSS LATEX ENAMEL.
- 2 PROVIDE LATERAL SUPPORT TO THE WALL BY ATTACHING CABLES IN THREE EVENLY SPACED LOCATIONS BETWEEN THE ROOF STEEL AND EYELETS ATTACHED TO THE WALL TOP PLATE. CABLES SHALL RUN PERPENDICULAR TO THE WALL ON BOTH SIDES OF THE WALL AND AT 30 TO 60 DEGREES FROM THE HORIZONTAL PLANE.
- 3 INSTALL NEW 3'Wx7'H INTERIOR METAL DOOR AND FRAME (2-3x7 DOORS), PAINT WHITE OR AS OTHERWISE DIRECTED BY OWNER. DOOR HARDWARE SHALL BE OF MATCHING STYLE AND QUALITY TO EXISTING IN THE BUILDING.
- 4 INSTALL NEW 6'Wx7'H INTERIOR METAL DOOR AND FRAME (2-3x7 DOORS), PAINT WHITE OR AS OTHERWISE DIRECTED BY OWNER. DOOR HARDWARE SHALL BE OF MATCHING STYLE AND QUALITY TO EXISTING IN THE BUILDING.
- MECHANICAL:
- 5 RELOCATE RETURN GRILLES. SEE DETAIL 1, THIS SHEET.
- 6 RELOCATED FAN/FILTER UNIT. SEE DRAWING 305.
- 7 PROVIDE NEW RETURN AIR GRILLES AND ASSEMBLY. SEE DETAIL 1, SHEET 307.
- 8 PROTECT EXPOSED REFRIGERANT LINES WITH A SHEET METAL COVER.
- 9 MOUNT EXTERIOR CONDENSER UNITS ON SPRING ISOLATORS, MASON INDUSTRIES SLF-B-280. TOTAL ISOLATORS REQUIRED IS 24.
- 10 6" CONCRETE EQUIPMENT PAD WITH #4 AT 18" OC ON 4" OF 5/8" MINUS CRUSHED GRAVEL ON COMPACTED SUBBASE.
- 11 ATTACH DUCT TO AHU USING FLEXIBLE DUCT CONNECTION FABRIC. (TYP). TRANSITION DUCTWORK TO FULL SIZE OF AHU.
- 12 INSTALL OPPOSED BLADE BALANCING DAMPERS WITH LOCKING QUADRANT WHERE INDICATED.
- 13 TEMPERATURE SENSOR SHALL BE LOCATED WHERE SHOWN 48 INCHES ABOVE FINISHED FLOOR.
- 14 INSTALL AND PROVIDE SMOKE DETECTORS FOR AHU SHUTDOWN WHEN SMOKE IS DETECTED IN DUCT. TYP 6 UNITS.
- 15 INSTALL 1-1/4" Ø CONDENSATE DRAIN FROM AHU'S TO OUTSIDE BUILDING. SEAL PIPE PENETRATION AIR AND WATER TIGHT. TERMINATE PIPE OUTSIDE BUILDING TURNED DOWN AND 18" ABOVE GRADE. PROVIDE BUG SCREEN. AHU UNITS SHOULD DISCHARGE INTO COMMON DRAIN PIPE, SLOPED TO OUTSIDE OF BUILDING.
- 16 WRAP DUCT FROM AHU UNIT TO 20x18 DUCT WITH 1" CLOSED CELL SYNTHETIC RUBBER, FOIL FACED INSULATION. TAPE INSULATION AT ALL JOINTS. INSULATION SHALL BE ARMAFLEX DUCT-FA-L FOIL FACED, SELF ADHESIVE. ATTACH PER MANUFACTURERS REQUIREMENTS.
- 17 SUPPORT EACH INDOOR AHU USING SPRING HANGERS AND RODS, MASON INDUSTRIES SERIES HS, SIZE X76.
- 18 SUPPORT DUCT, CONDENSATE DRAIN PIPE, AND REFRIGERANT PIPING USING ISOLATION HANGERS, MASON INDUSTRIES SERIES HD OR SERIES WHR, SIZE SELECTED FOR LOAD, OR ENGINEER APPROVED ISOLATION METHOD.
- 19 PROVIDE POWER AND DISCONNECT FOR CU-1, 2, AND 3. EACH CONDENSING UNIT CONSISTS OF TWO CONDENSER MODULES, EACH REQUIRING A SEPARATE POWER FEED IN CONDUIT AND CONNECTED TO CIRCUITS AS DIRECTED BY THE OWNERS ELECTRICAL REPRESENTATIVE.
- 20 PROVIDE POWER AND DISCONNECT FOR AHU-1 THRU 6. CIRCUITS AS DIRECTED BY THE OWNERS ELECTRICAL REPRESENTATIVE.
- 21 PROVIDE NEW DUPLEX RECEPTACLES. DO NOT CONNECT MORE THAN TWO RECEPTACLES PER CIRCUIT. CONDUCTORS SHALL BE ROUTED IN CONDUIT AND CONNECTED TO CIRCUITS AS DIRECTED BY THE OWNERS ELECTRICAL REPRESENTATIVE.
- MISCELLANEOUS:
- 22 STRIP CURTAIN. SEE DRAWING 306 FOR SUPPORT DETAILS.

LEGEND



LIGO HANFORD OBSERVATORY
DRAWING: LIGO-D1400304-V1
HIBBS ENGINEERING, INC.
KENNEWICK, WASHINGTON

LHO DCS FACILITY
HVAC PLAN & SECTIONS

PROJECT NUMBER: 1071.010
CAD FILE: 1071-1A01.DWG

© 2014 Hibbs Engineering, Inc.

DRAWN BY: GLH
CHECKED BY:
DESIGN A/E: DESIGN GM
HEI APPROVAL:

DATE OF ISSUE		APPROVED	
REV	DATE	BY	DESCRIPTION