

MAY 28 1998

PROPRIETARY AND CONFIDENTIAL
THIS DOCUMENT CONTAINS PROPRIETARY INFORMATION BELONGING TO PROCESS SYSTEMS INTERNATIONAL, INC. OR ITS AFFILIATED COMPANIES AND SHALL BE USED ONLY FOR THE PURPOSE FOR WHICH IT WAS SUPPLIED. IT SHALL NOT BE COPIED, REPRODUCED OR OTHERWISE USED, NOR SHALL SUCH INFORMATION BE FURNISHED IN WHOLE OR IN PART TO OTHERS EXCEPT IN ACCORDANCE WITH THE TERMS OF ANY AGREEMENT UNDER WHICH IT WAS SUPPLIED OR WITH THE PRIOR WRITTEN CONSENT OF PROCESS SYSTEMS INTERNATIONAL, INC. AND SHALL BE RETURNED UPON REQUEST.

DWG. NO.	DESCRIPTION	DWG. NO.	DESCRIPTION
V049-5-040	PIPING ARRANGEMENT PLAN CORNER STATION		
V049-5-003	EQUIPMENT ARRANGEMENT CORNER STATION		
110101	LIGO VACUUM EQUIPMENT CORNER STATION		

REV	DESCRIPTION	CHKD	DRWN	DATE	DECH
1	ISSUED FOR CONSTRUCTION	RJC	REC	05/22/98	0577
0	ISSUED FOR FDR			1.13.97	0406

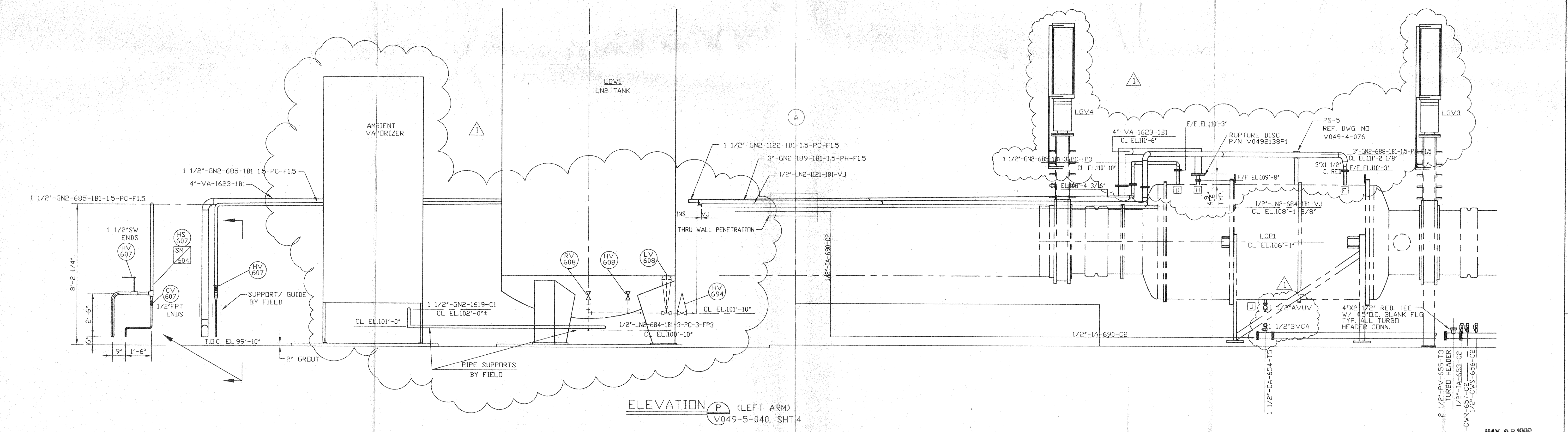
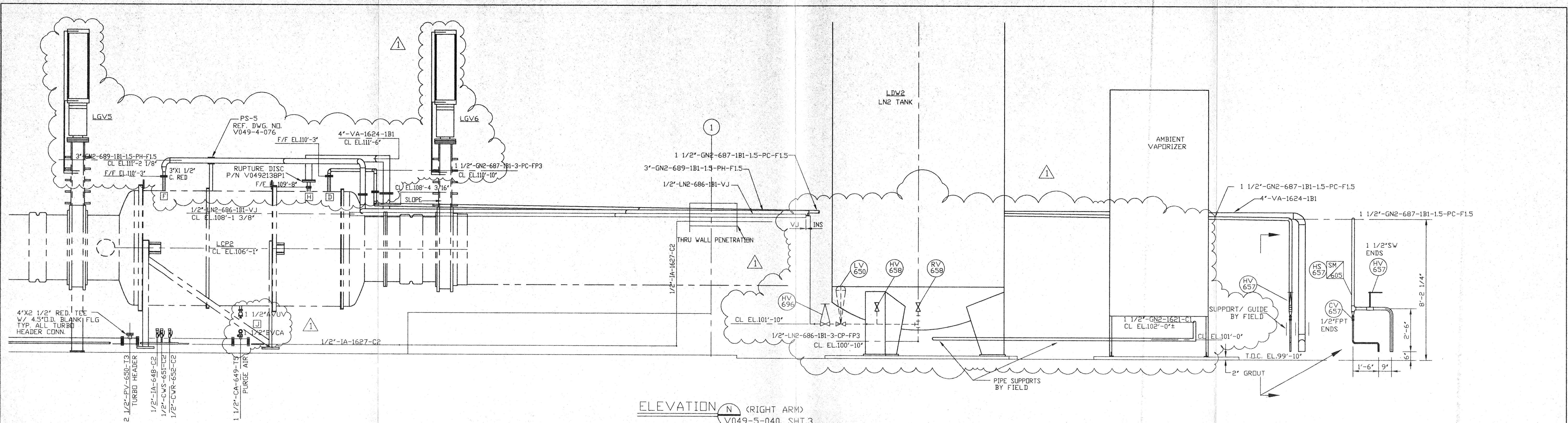
PROCESS SYSTEMS INTERNATIONAL INC.
20 WALKUP DR. WESTBOROUGH, MASSACHUSETTS 01581 USA

**PIPING ARRANGEMENT
ELEVATIONS
CORNER STATION LOUISIANA
LIGO VACUUM EQUIPMENT**

CAD FILE	SIZE	DWG. NO.	REV.
V0495041/5041S1	D	V049-5-041	1
SCALE 3/8"=1'-0"	SHEET	1 OF 2	

MAY 19 1998 09:36:31

L160 - DS60248 - d1 - V



MAY 28 1998

PROCESS SYSTEMS INTERNATIONAL INC. 20 WALKUP DR. WESTBOROUGH, MASSACHUSETTS 01581 USA				
PIPING ARRANGEMENT ELEVATIONS CORNER STATION LOUISIANA LIGO VACUUM EQUIPMENT				
CAD FILE V0495041/S041S2	SIZE D	DWG. NO. V049-5-041	REV. 1	
SCALE 3/8"=1'-0"	SHEET 2 OF 2			

MAY 19, 1998 - 09:3713