

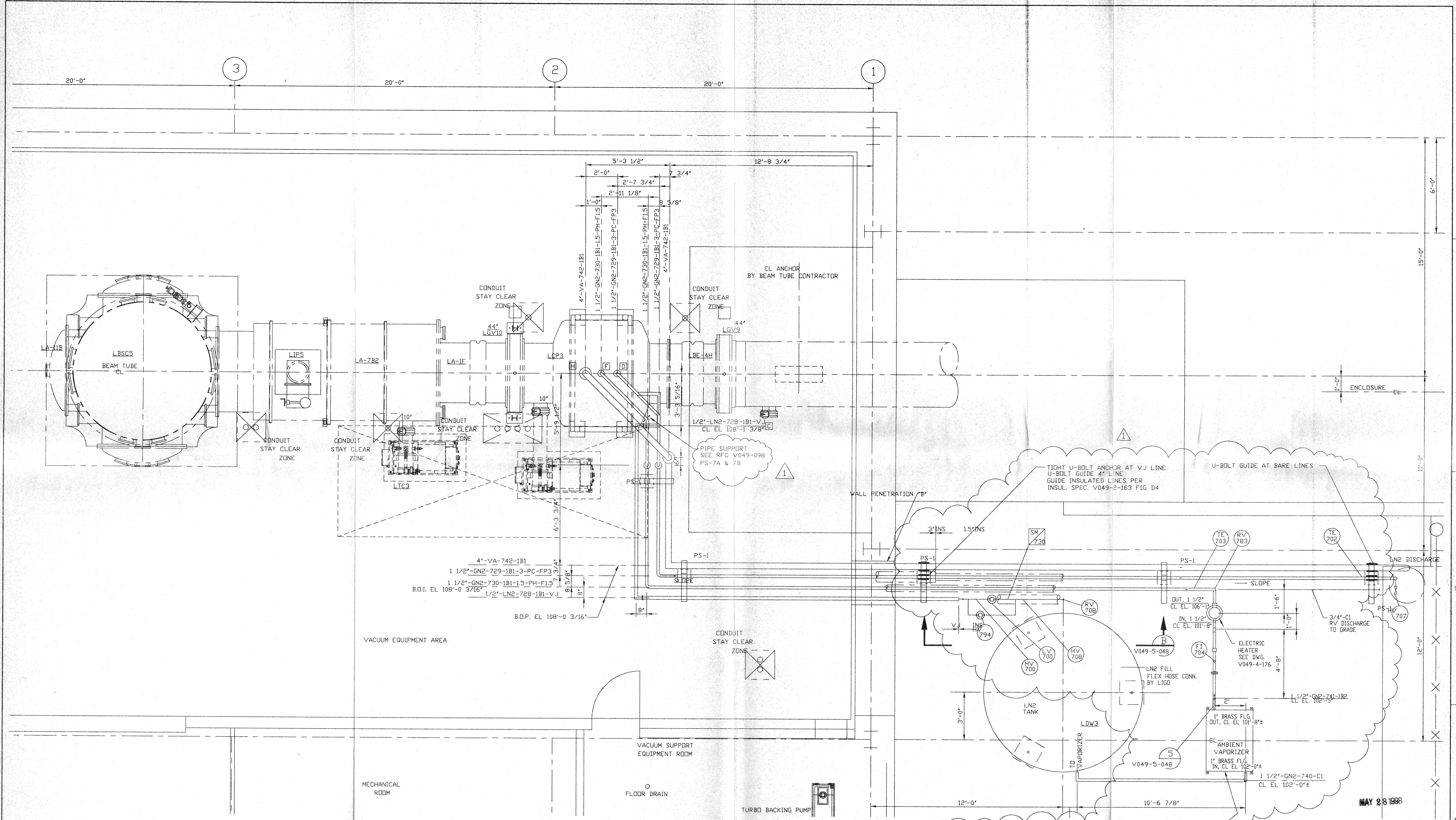
- NOTES:**
- SEE SPEC. V049-2-025 FOR INSTALLATION/ COMMISSIONING INFORMATION.
  - FOR TUBING/ PIPE SUPPORT REQUIREMENTS, SEE SPEC. V049-2-025, SECTION 10.
  - FOR GATE VALVE ANNULUS TUBING INSTALLATION SEE DWG. V049-5-009.

PROPRIETARY AND CONFIDENTIAL THIS DOCUMENT CONTAINS PROPRIETARY INFORMATION BELONGING TO PROCESS SYSTEMS INTERNATIONAL, INC. OR ITS AFFILIATED COMPANIES AND SHALL BE USED ONLY FOR THE PURPOSE FOR WHICH IT WAS SUPPLIED. IT SHALL NOT BE COPIED, REPRODUCED OR OTHERWISE USED, NOR SHALL SUCH INFORMATION BE FURNISHED IN WHOLE OR IN PART TO OTHERS EXCEPT IN ACCORDANCE WITH THE TERMS OF ANY AGREEMENT UNDER WHICH IT WAS SUPPLIED OR WITH THE PRIOR WRITTEN CONSENT OF PROCESS SYSTEMS INTERNATIONAL, INC. AND SHALL BE RETURNED UPON REQUEST.		UNLESS OTHERWISE SPECIFIED DIMENSIONS ARE IN INCHES TOLERANCES: FRACTIONAL ± ANGULAR/ARCH ± HOLE/END ± THREE PLACE DECIMAL ± FINISHED SURFACE RMS BREAK CORNERS IN: DUTY REMOVE ALL BURRS		1 ISSUED FOR CONSTRUCTION 0 ISSUED FOR FDR		RDC REC. DA 05/22/98 0577 SM DMW RDC REC RM 113.97 0406		PROCESS SYSTEMS INTERNATIONAL INC. 20 WALKUP DR. WESTBOROUGH, MASSACHUSETTS 01581 USA	
DWG. NO. DESCRIPTION REFERENCE DRAWINGS		DWG. NO. DESCRIPTION		DO NOT SCALE THIS DRAWING		USED ON: REV DESCRIPTION		PIPING ARRANGEMENT, PLAN LEFT END STATION - 700 AREA LOUISIANA SITE LIGO VACUUM EQUIPMENT	
V049-0-020 P & ID LEFT END STATION V049-0-006 P & ID 80K CRYOPUMP V049-5-009 EQUIPMENT ARRANGEMENT LEFT END STATION 1101102 LIGO VACUUM EQUIPMENT END STATION		V049-5-048 P & ID LEFT END STATION V049-5-048 EQUIPMENT ARRANGEMENT LEFT END STATION		1 ISSUED FOR CONSTRUCTION		0 ISSUED FOR FDR		CAD FILE V0495046/5046S1 SIZE DWG. NO. V049-5-046 SCALE 3/8"=1'-0" SHEET 1 OF 2	

MAY 28 1998

May 19, 1998 - 09:41:30

L140-D980253-01-V



PLAN @ EL. 112'-6"

NOTE: 1. FIELD TO DETERMINE ACTUAL ELEVATIONS OF NOZZLES BEFORE FABRICATION OF PIPING.  
 2. BRASS 4-HOLE FLANGES ARE PROVIDED WITH AMBIENT VAPORIZERS. THEY ARE TO BE SILVER SOLDER BRAZED TO AN ADAPTER TO S/S PIPE, TO BE PROVIDED BY SITE CONTRACTOR. SEE DETAIL 5 ON DWG. V045-5-048.

**PROCESS SYSTEMS INTERNATIONAL INC.**  
 20 WALKUP DR. WESTBOROUGH, MASSACHUSETTS 01581 USA

PIPING ARRANGEMENT, PLAN  
 LEFT END STATION - 700 AREA  
 LOUISIANA SITE  
 LIGO VACUUM EQUIPMENT

CAD FILE V0495046/5046S2	SIZE D	DWG. NO. V049-5-046	REV. 1
SCALE 3/8"=1'-0"	SHEET 2 OF 2		

MAY 28 1998

MAY 21 1998 - 1511736