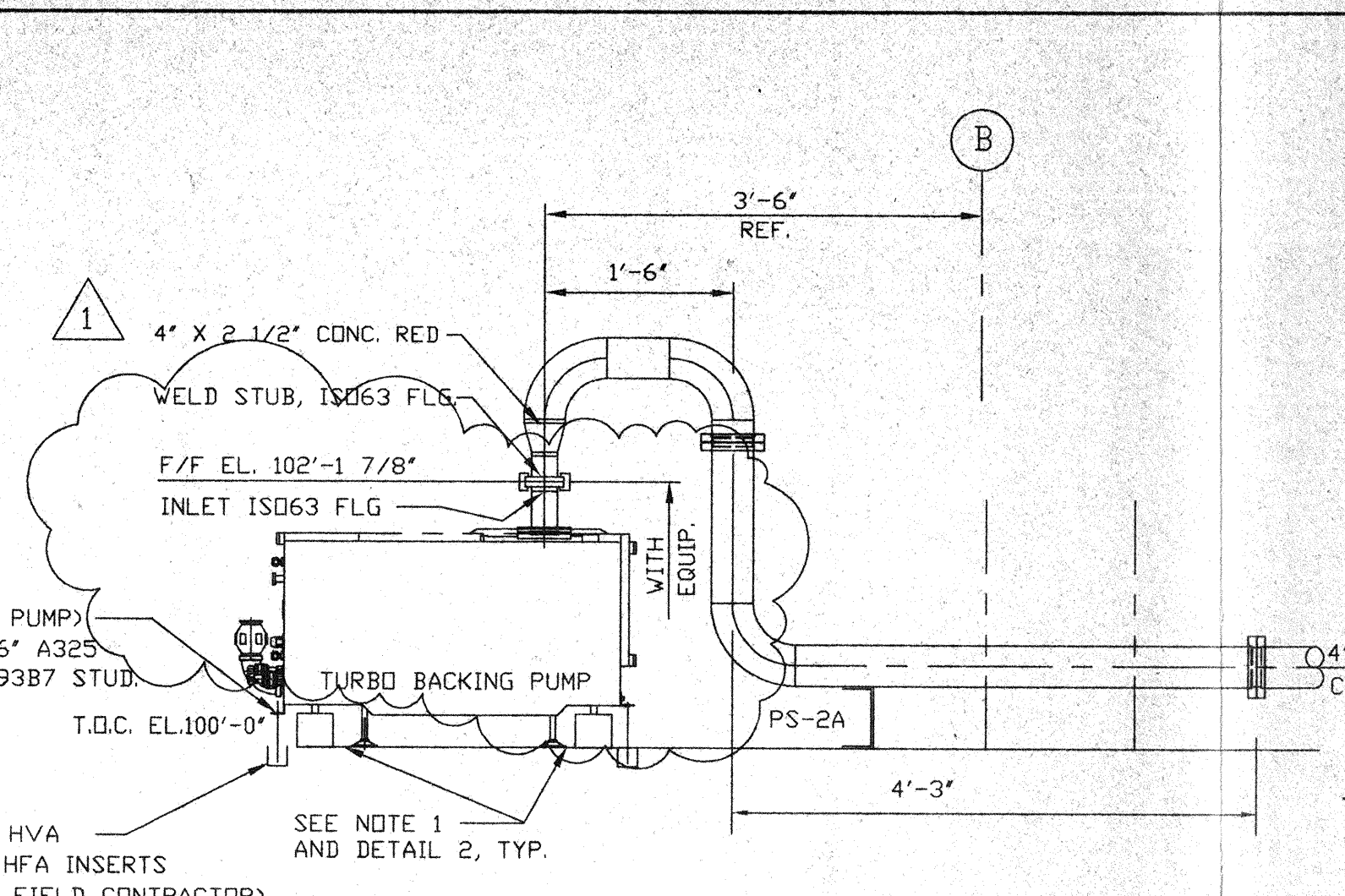


SECTION F
SCALE: 3/8"=1'-0" V049-5-046, SHT2



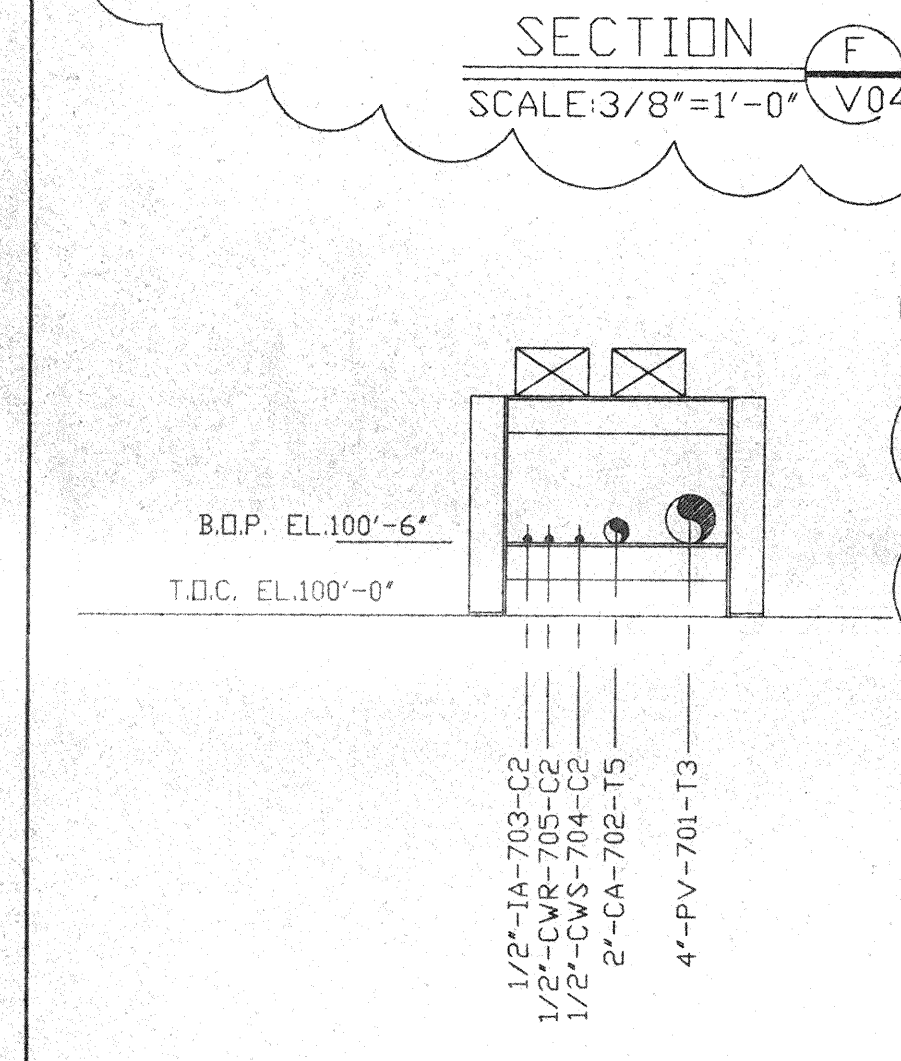
SECTION C
SCALE: 3/4"=1'-0" V049-5-046, SHT1

USE RUBBER BUSHING (WITH PUMP) TO ISOLATE BOLT. 1/2" X 6" A325 HIGH STRENGTH BOLT OR A193B7 STUD.

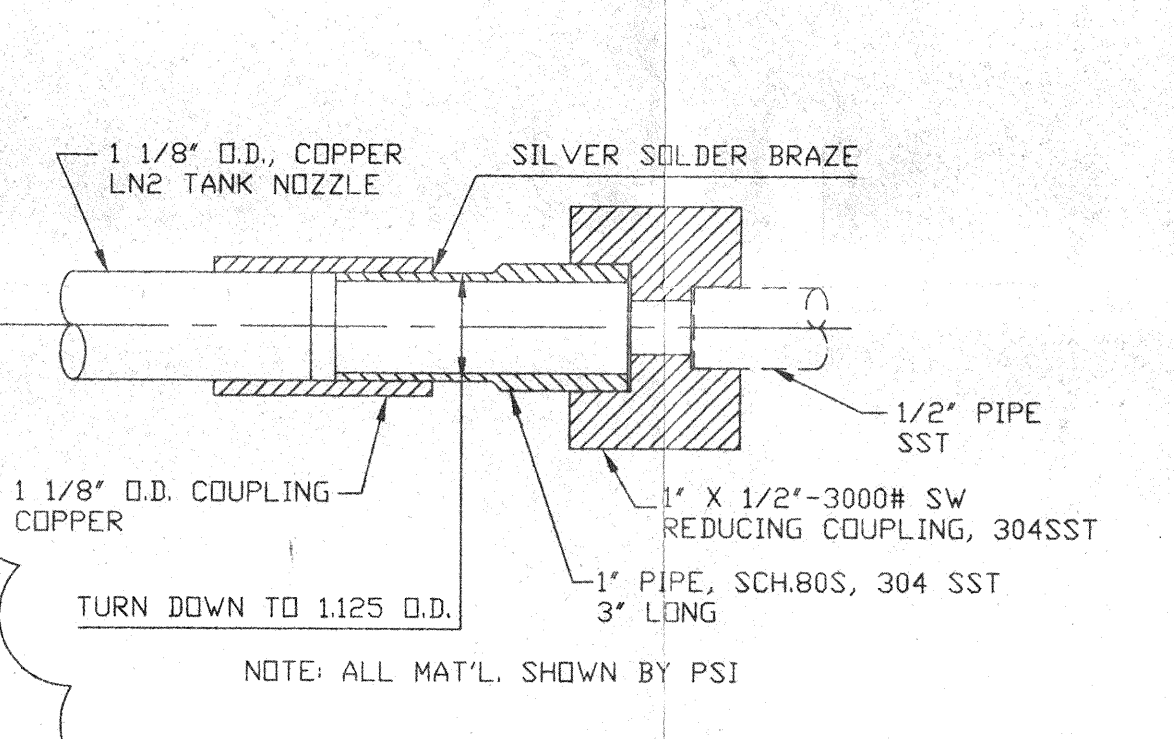
CONCRETE ANCHOR-HILTI HVA ADHESIVE ANCHOR WITH HFA INSERTS 1/2" X 5" EMBEDMENT (BY FIELD CONTRACTOR). TYPICAL ALL PUMPS.

NOTES

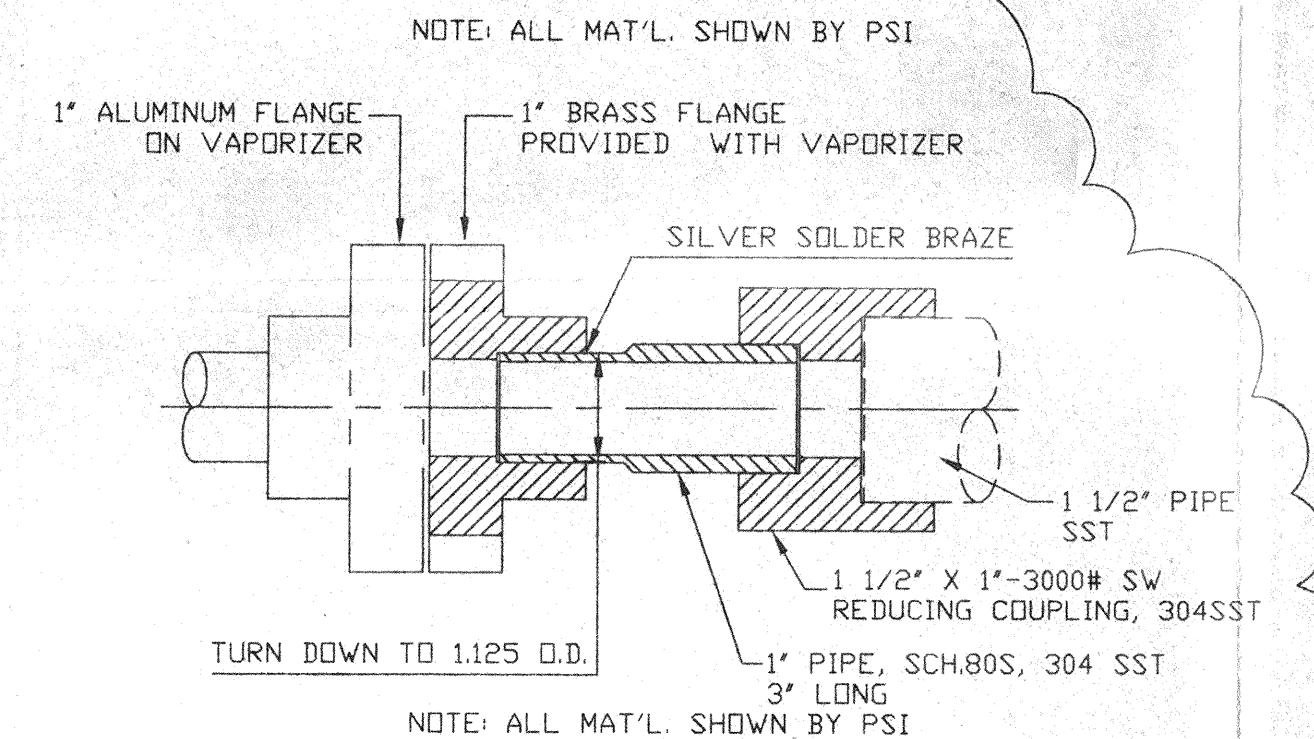
- ADJUST PUMP CART LEVELING LEGS TO RAISE CART WHEELS OFF THE FLOOR. THE LEGS ARE TO REST ON THE 1/2" THICK VIBRATION ISOLATION PADS. USE MASON TYPE "BBP" DURUMETER 50, UNDER LEGS. TYPICAL 4 LEGS PER CART.



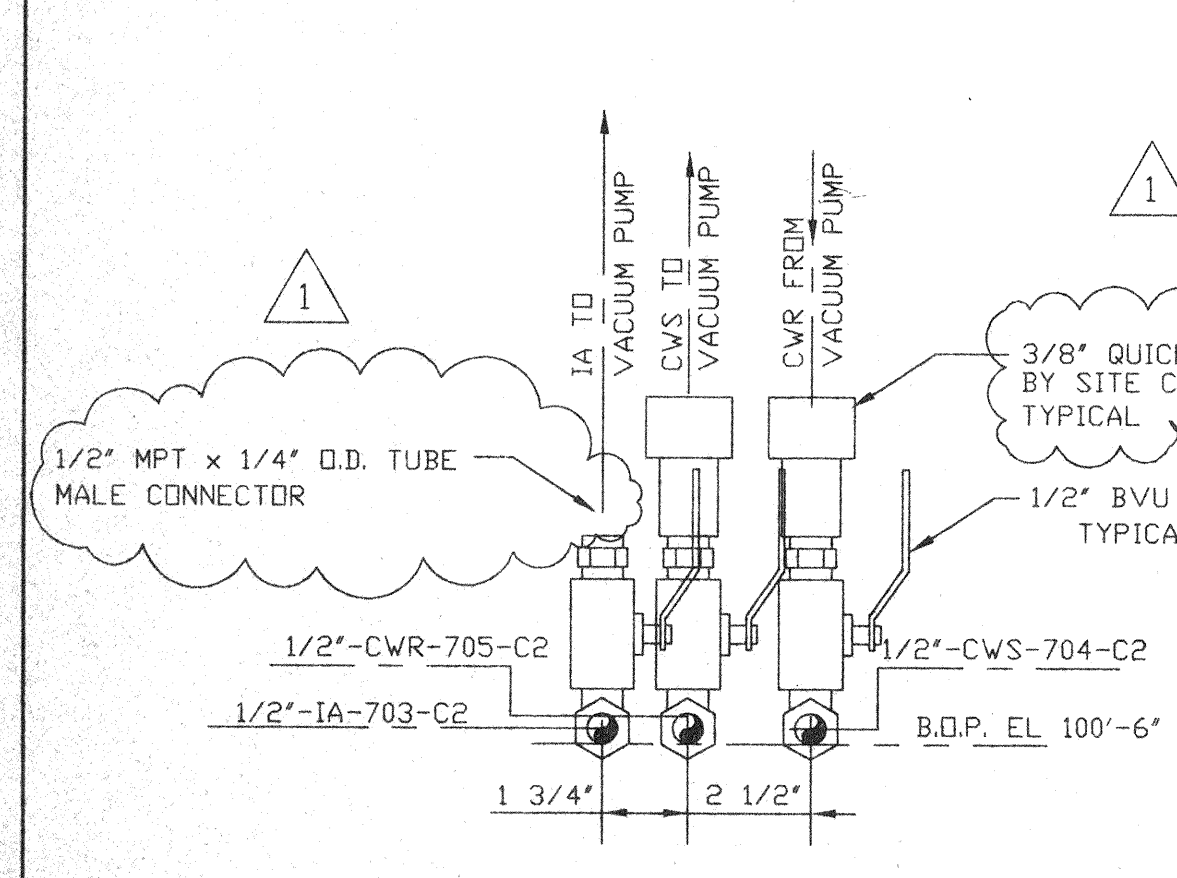
SECTION A
SCALE: 3/4"=1'-0" V049-5-046, SHT1



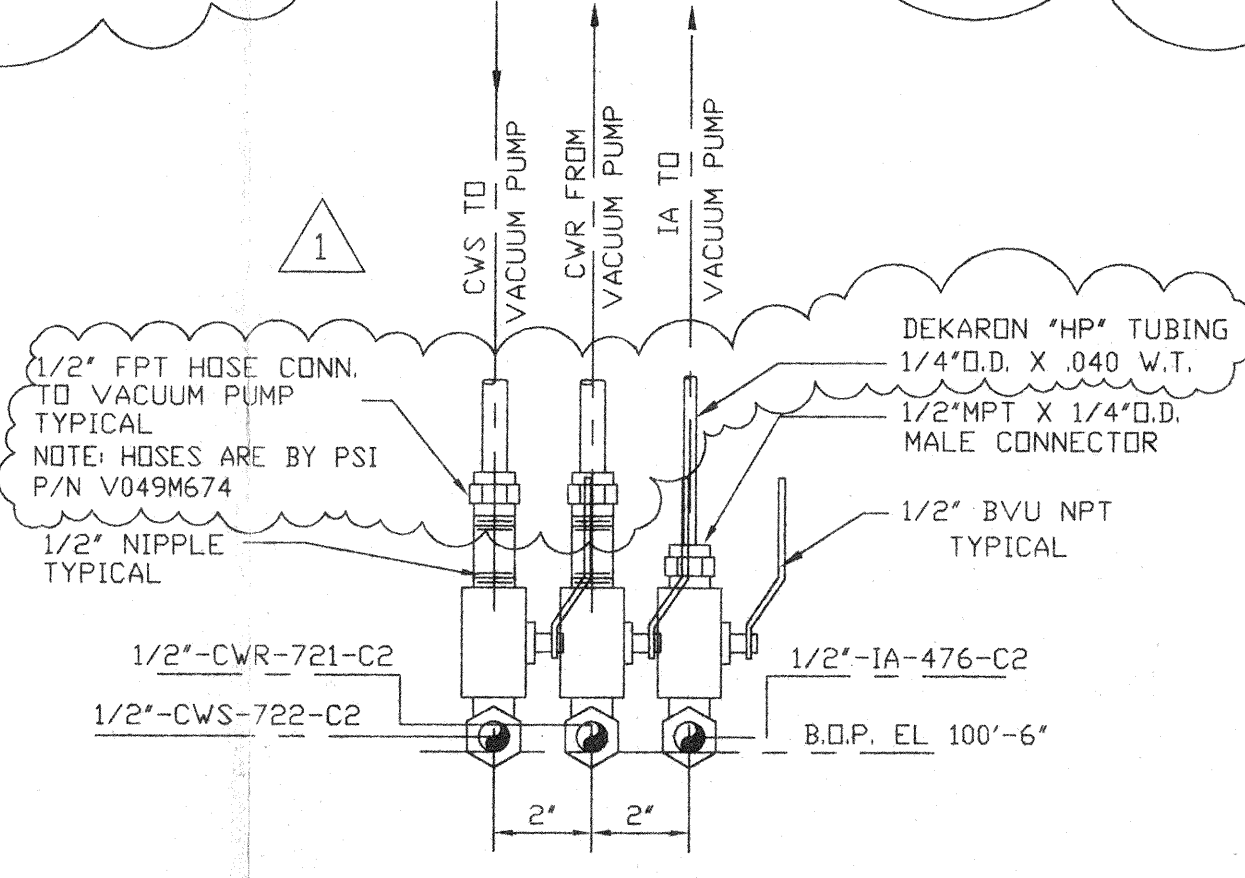
DETAIL 6
SCALE: HALF



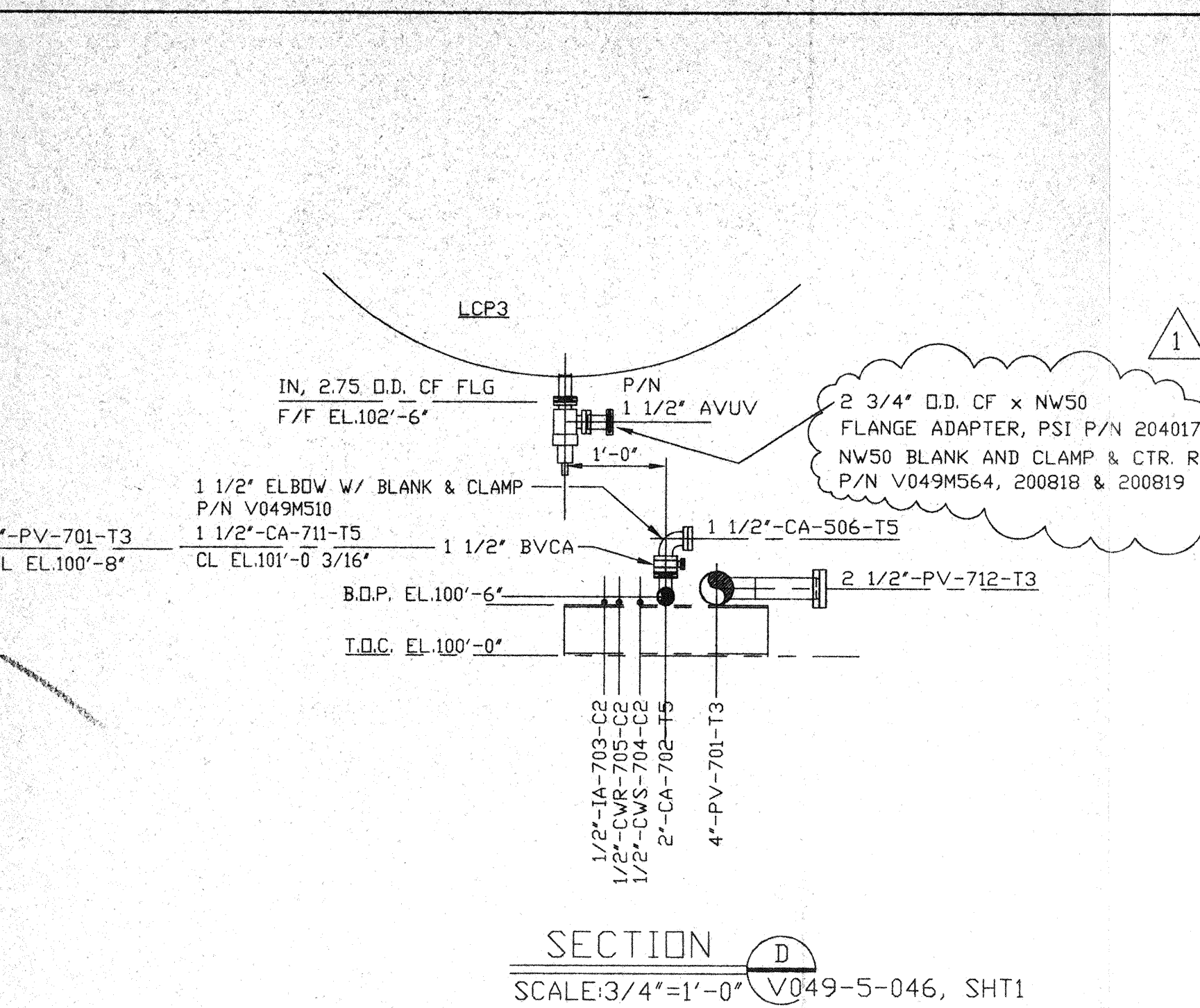
DETAIL 5
SCALE: HALF V049-5-046, SHT2



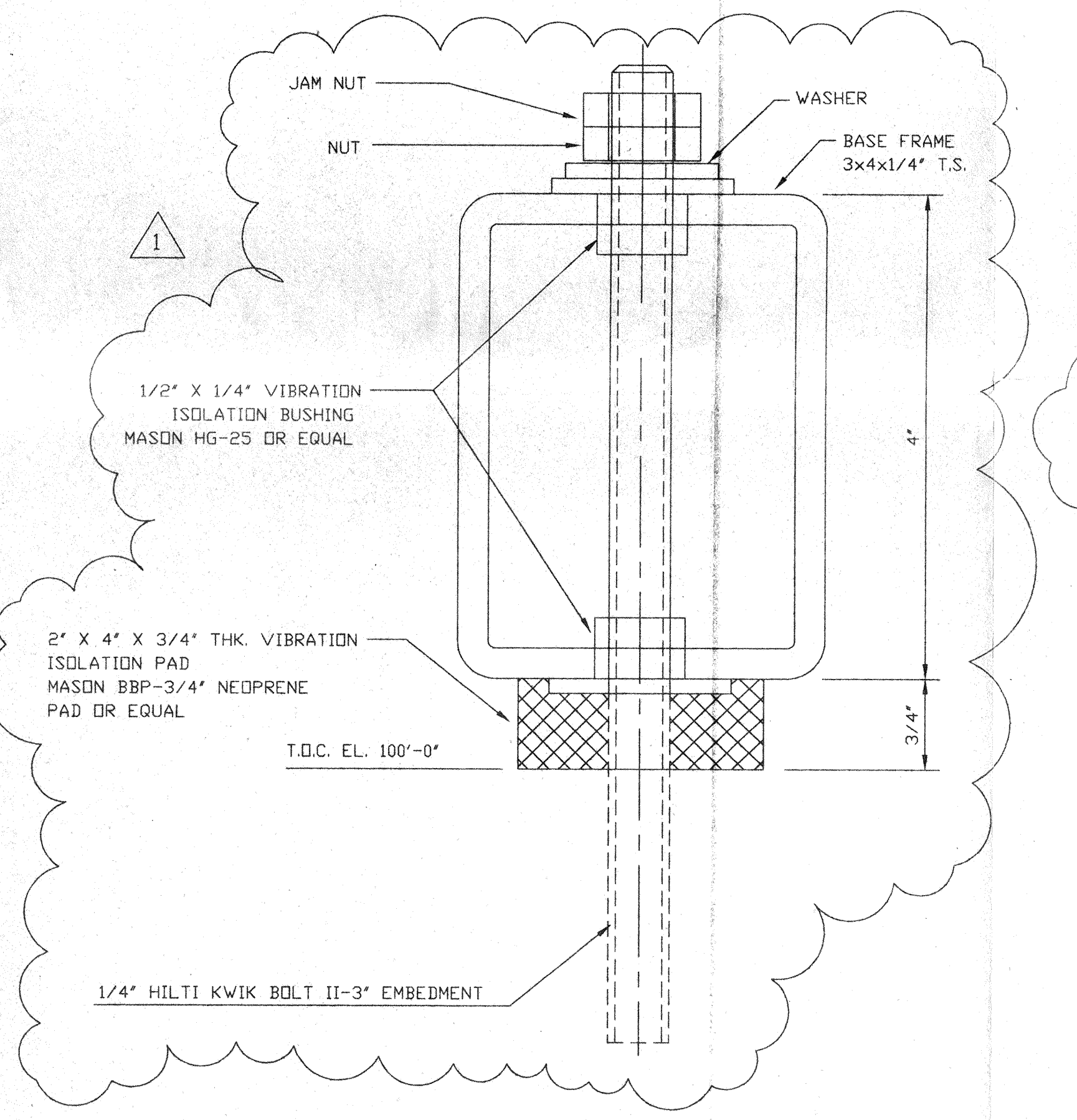
DETAIL 1
SCALE: 3"=1'-0" V049-5-046, SHT1



DETAIL 4
SCALE: 3"=1'-0" V049-5-046, SHT1



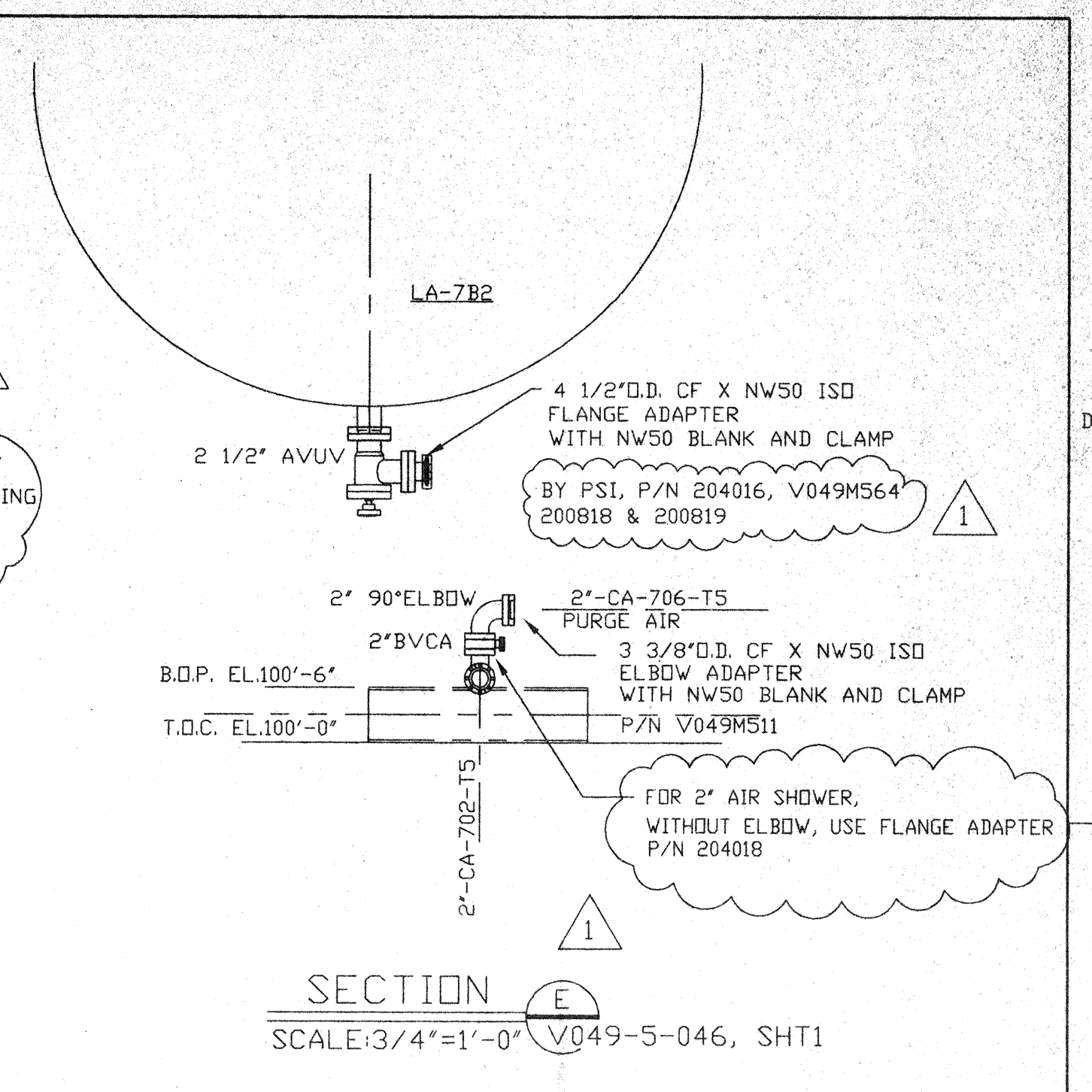
SECTION D
SCALE: 3/4"=1'-0" V049-5-046, SHT1



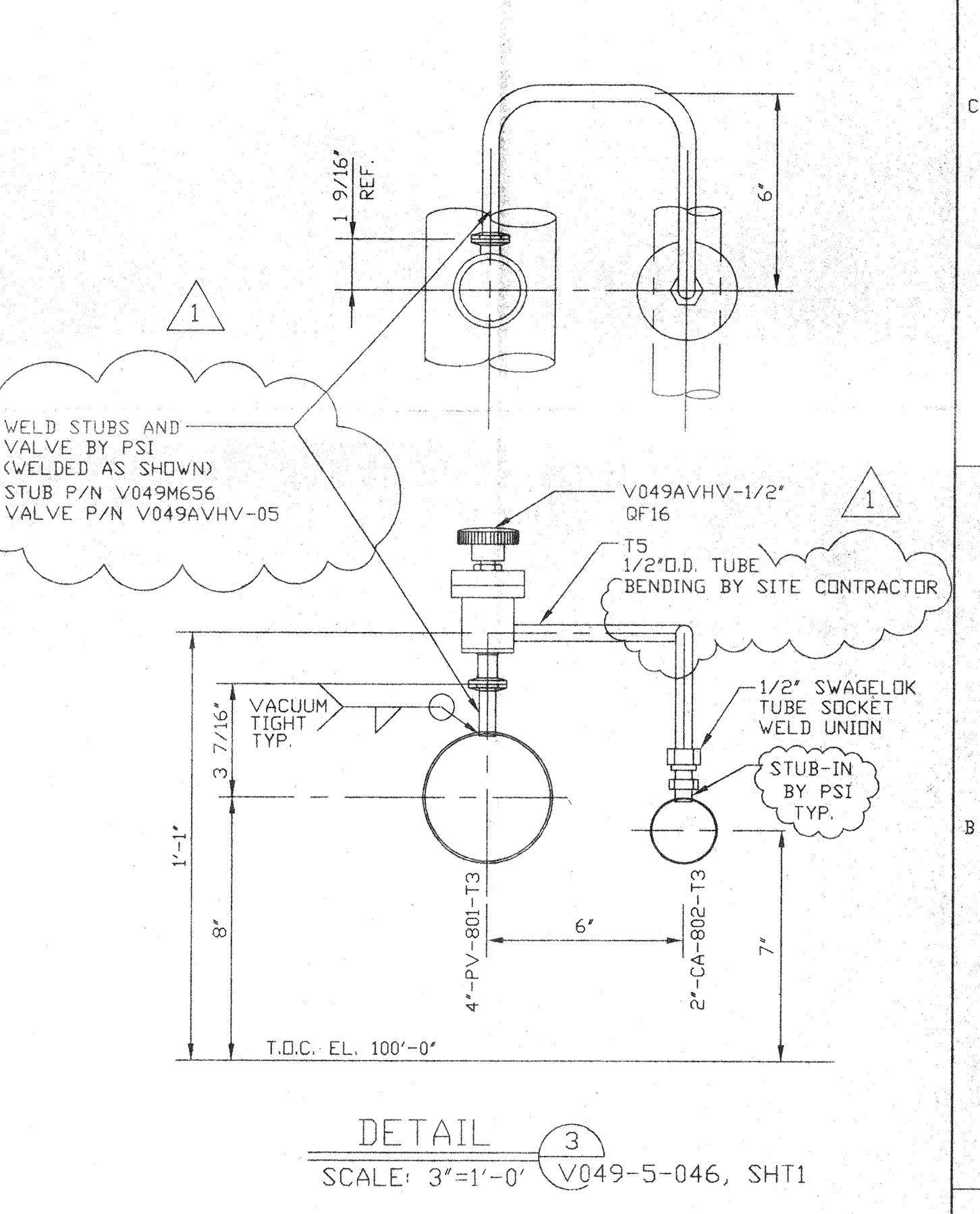
VIBRATION ISOLATION PAD
TYPICAL
(4) REQ'D PER UNIT

NOTE: THIS TYPE OF VIBRATION PAD ASSEMBLY IS TO BE USED UNDER AIR COMPRESSOR SKID AND ELECTRICAL CABINETS. FOR 50 CFM AIR COMPRESSOR USE 4 BOLTED POINTS. USE 2" X 4" X 3/4" PADS, TYPICAL. CUT BOLT HOLES TO SUIT. ANCHOR BOLT METAL IS NOT TO BE IN CONTACT WITH BASE FRAME METAL. VIBRATION PADS & BUSHINGS & ANCHOR BOLTS BY FIELD CONTRACTOR.

DETAIL 2
SCALE: FULL V049-5-021, SHT1



SECTION E
SCALE: 3/4"=1'-0" V049-5-046, SHT1



DETAIL 3
SCALE: 3"=1'-0" V049-5-046, SHT1

<p>PROPRIETARY AND CONFIDENTIAL</p> <p>THIS DOCUMENT CONTAINS PROPRIETARY INFORMATION BELONGING TO PROCESS SYSTEMS INTERNATIONAL, INC. OR ITS AFFILIATED COMPANIES AND SHALL BE USED ONLY FOR THE PURPOSE FOR WHICH IT WAS SUPPLIED. IT SHALL NOT BE COPIED, REPRODUCED OR OTHERWISE USED, NOR SHALL SUCH INFORMATION BE FURNISHED IN WHOLE OR IN PART TO OTHERS EXCEPT IN ACCORDANCE WITH THE TERMS OF ANY AGREEMENT UNDER WHICH IT WAS SUPPLIED OR WITH THE PRIOR WRITTEN CONSENT OF PROCESS SYSTEMS INTERNATIONAL, INC. AND SHALL BE RETURNED UPON REQUEST.</p>		<p>UNLESS OTHERWISE SPECIFIED DIMENSIONS ARE IN INCHES</p> <p>TOLERANCES: FRACTIONAL ± ANGULAR/ARCH TO BEND ± TWO PLACE DECIMAL ± THREE PLACE DECIMAL ± FINISHED SURFACE ONLY BREAK CORNERS IN REMOVE ALL BURRS</p>		<p>PROCESS SYSTEMS INTERNATIONAL INC. 20 WALKUP DR. WESTBOROUGH, MASSACHUSETTS 01581 USA</p>	
<p>V049-5-046 PIPING ARRANGEMENT PLAN LEFT END STATION</p>		<p>1 ISSUED FOR CONSTRUCTION</p>		<p>PIPING ARRANGEMENT, SECTIONS LEFT END STATION - AREA 700 LOUISIANA SITE LIGO VACUUM EQUIPMENT</p>	
<p>V049-5-009 EQUIPMENT ARRANGEMENT LEFT END STATION</p>		<p>0 ISSUED FOR FDR</p>		<p>CAD FILE V0495048</p>	
<p>1101102 LIGO VACUUM EQUIPMENT END STATION</p>		<p>SM DMW RDC REC RM 1.13.97 0406</p>		<p>SIZE DWG. NO. V049-5-048</p>	
<p>DWG. NO. DESCRIPTION REFERENCE DRAWINGS</p>		<p>USED ON: REV DESCRIPTION</p>		<p>DATE DEC'D</p>	
<p>SCALE: AS NOTED</p>		<p>ISSUE DESCRIPTION</p>		<p>SHEET 1 OF 1</p>	

MAY 28 1998