

LIGO-T1500108

# 3IFO OpLev Guts Cross Check and Custody-20 March 2015



**REDUX** - version 2.0.18.3 - released 3-February-2012 @ 11:00 AM CST

3. 3-OL-TX2-D1001301-5-PR3

**Status**

**Key:** D1001301-V1-00-0005  
**Type:** LIGO Part Record  
**Date:** 09/Jan/13  
**Created:**  
**Created:** jodi.fauver@ligo.org  
**Subsystem:** Auxilliary Optics (AOS)  
**Subsystem Lead:** eric.gustafson@ligo.org  
**Current Status:** Entered  
**Progress:**  Cleaned  
 Baked  
 Assembled

**Watchers :** 0

**Attributes**

**Part Name :** Oplev TX Pier  
 Weldment (PR3,SR3)  
**Description:**  
**Site:** LHO  
**Location:** 3IFO-XMid  
**Sub-Location:** VEA-Termination Slab  
**Drawing:** D1001301  
**Rev:** V1  
**Type:** 0  
**Serial # :** 5  
**Manufacturer :** Aeroshear Aviation  
 Services  
**Supplier :**  
**Material :** SS  
**Property Tag :**  
**PO # :** 75-ADV-S105850

**Attachment/s:**



831511



3IFO-Oplev Tx Weldment

3-OL-Foot1-D1000434-21



831604

3-OL-Foot1-D1000434-32



831605

**Operations**

**Manage Record:**

- [Edit Record](#)
- [Add Comment](#)
- [Watch this record](#)

**Create Record:**

- [Defect or Issue Record](#)
- [Inspection Record](#)
- [Modification Record](#)
- [Test Record](#)

**Create Load:**

- [Bake](#)
- [Clean](#)
- [Shipment](#)
- [Storage](#)

**Hierarchy**

No Hierarchy data found.

**History**

All   Comments   Transactions   Record Edits   Loads   Inspections   Tests   Part Mods   Defects

Date	Title	Linked ID	Status	Site
08/Apr/13	Storage Load	<a href="#">Storage-6038</a>	Entered	LHO

➔ REDUX -- version 2.0.18.3 - released 3-February-2012 @ 11:00 AM CST ➔

3-OL-Giraffe-D1101802-3-HAM3

3-OL-GGP-D1101823-3-HAM3



831103



831203

### Status

**Key:** D1101802-V2-00-0003  
**Type:** LIGO Part Record  
**Date:** 10/Jan/13  
**Created:**  
**Created:** jodi.fauver@ligo.org  
**Subsystem:** Auxilliary Optics (AOS)  
**Subsystem Lead:** eric.gustafson@ligo.org  
**Current Status:** Entered  
**Progress:**  Cleaned  
 Baked  
 Assembled  
**Watchers:** [0](#)

### Attributes

**Part Name :** OpLev Giraffe  
**Description:**  
**Site:** LHO  
**Location:** 3IFO-XMid  
**Sub-Location:** VEA-Behind  
 Beamtube  
**Drawing:** D1101802  
**Rev:** V2  
**Type:** 0  
**Serial # :** 3  
**Manufacturer :** Aeroshear Aviation  
 Services  
**Supplier :**  
**Material :** Carbon Fiber  
**Property Tag :**  
**PO # :** 75-ADV-S105850

### Attachment/s:

### Image



3IFO-OpLev Giraffe-D1101802-03.JPG

[Delete](#)
 Add Image

**REDUX** -- version 2.0.18.3 - released 3-February-2012 @ 11:00 AM CST

3-OL-Giraffe-D1101802-4-HAM4

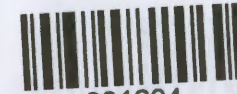
itions: ics-help@ligo-la.caltech.edu



831104

Image

3-OL-GGP-D1101823-4-HAM4



831204

**Status**

**Key:** D1101802-V2-00-0004  
**Type:** LIGO Part Record  
**Date:** 10/Jan/13  
**Created:**  
**Created:** jodi.fauver@ligo.org  
**Subsystem:** Auxilliary Optics (AOS)  
**Subsystem Lead:** eric.gustafson@ligo.org  
**Current Status:** Entered  
**Progress:**  Cleaned  
 Baked  
 Assembled  
**Watchers :** 0

**Attributes**

**Part Name :** OpLev Giraffe  
**Description:**  
**Site:** LHO  
**Location:** 3IFO-XMid  
**Sub-Location:** VEA-Behind Beamtube  
**Drawing:** D1101802  
**Rev:** V2  
**Type:** 0  
**Serial # :** 4  
**Manufacturer :** Aeroshear Aviation Services  
**Supplier :**  
**Material :** Carbon Fiber  
**Property Tag :**  
**PO # :** 75-ADV-S105850

**Attachment/s:**



3IFO-OpLev Giraffe-D1101802-04.JPG

[Delete](#)



Add Image

3-OL-Leaner-D1001292-6-LH



831301

Status

Key: D1001292-V1-01-0006
Type: LIGO Part Record
Date: 10/Jan/13
Created:
Created: jodi.fauver@ligo.org
Subsystem: Auxilliary Optics (AOS)
Subsystem Lead: eric.gustafson@ligo.org
Current Status: Entered
Progress: [ ] Cleaned [ ] Baked [ ] Assembled
Watchers: 0

Attributes

Part Name : aLIGO AOS OpLev and PhotCal RX Pier Weldment LH
Description:
Site: LHO
Location: 3IFO-XMid
Sub-Location: VEA-Behind Beamtube
Drawing: D1001292
Rev: V1
Type: 01
Serial # : 0006
Manufacturer : Aeroshear Aviation Services
Supplier :
Material : SS
Property Tag :
PO # : 75-ADV-S105850
Attachment/s:

Image



D1001292-v1-01-006-All.JPG

Delete



Add Image

Operations

Manage Record:

- Edit Record
Add Comment
Watch this record

Create Record:

- Defect or Issue Record
Inspection Record
Modification Record
Test Record

Create Load:

- Bake
Clean
Shipment
Storage

Hierarchy

No Hierarchy data found.

History

3-OL-Leaner-D1001297-1-RH



831302

**Status**

**Key:** D1001297-V1-00-0001  
**Type:** LIGO Part Record  
**Date Created:** 24/May/11  
**Created:** bryan.smith@ligo.org  
**Subsystem:** Optical Lever (OPLEV)  
**Subsystem Lead:** eric.james@ligo.org  
**Current Status:** Accepted  
**Progress:**  Cleaned  
 Baked  
 Assembled  
**Watchers:** 0

**Attributes**

**Part Name :** aLIGO AOS OpLev and PhotCal RX Pier Weldment RH  
**Description:**  
**Site:** LHO  
**Location:** 3IFO-XMid  
**Sub-Location:** VEA-Behind Beamtube  
**Drawing:** D1001297  
**Rev:** V1  
**Type:** 0  
**Serial # :** 001  
**Manufacturer :** Aeroshear  
**Supplier :**  
**Material :** 304 SS  
**Property Tag :**  
**PO # :** S105850  
**Attachment/s:**

**Image**



D1001297-v1-01-001-All\_No Plate.JPG

[Delete](#)



Add Image

**Operations**

**Manage Record:**

- [Edit Record](#)
- [Add Comment](#)
- [Watch this record](#)

**Create Record:**

- [Defect or Issue Record](#)
- [Inspection Record](#)
- [Modification Record](#)
- [Test Record](#)

**Create Load:**

- [Bake](#)
- [Clean](#)
- [Shipment](#)
- [Storage](#)

**Hierarchy**

No Hierarchy data found.

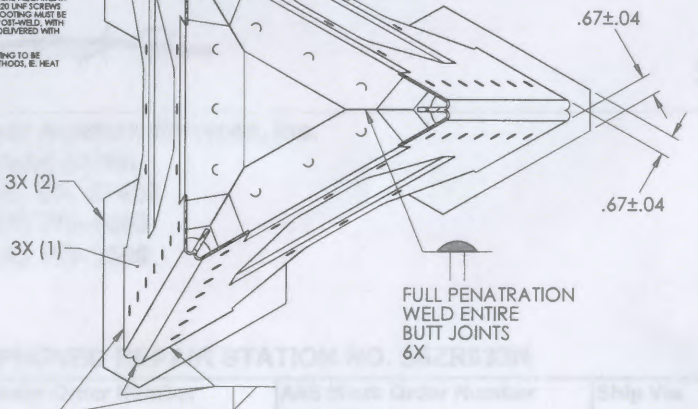
**History**

EXAMPLE: D10000434-V1, TYPE-X2, S/N 1000

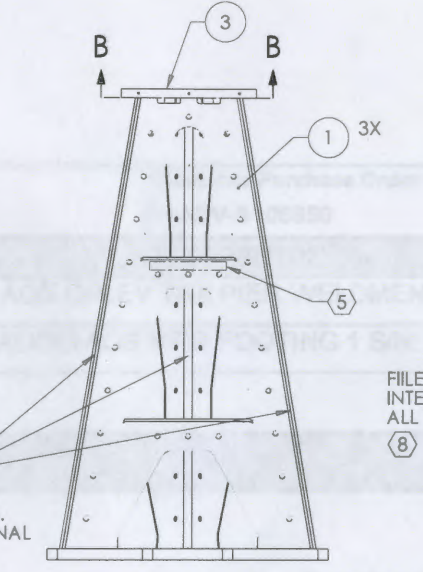
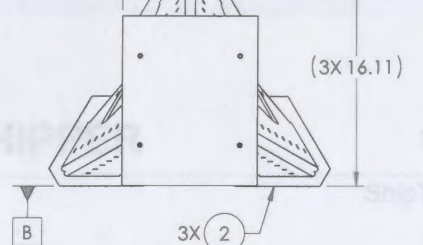
① AFTER COMPLETION OF THE WELDMENT, MACHINE AT TOP OF ITEM 3 TO NOTED SPECIFICATIONS IF NECESSARY. LEVEL THE UPPER FACE OF ITEM 3 SQUARE WITH MACHINING HEAD) BEFORE MACHINING.

② FASTEN ITEM 2 TO D1000434 FOOTING BEFORE APPLYING NOTED WELDS TO ENSURE ALIGNMENT. FOR EACH ITEM 2, USE THREE 1/2-20 UNF SCREWS TO TAPPED HOLES IN FOOTING. FOOTING MUST BE REMOVABLE & RE-ATTACHABLE POST-WELD, WITH NO BINDING OF SCREWS. TO BE DELIVERED WITH FOOTING ATTACHED.

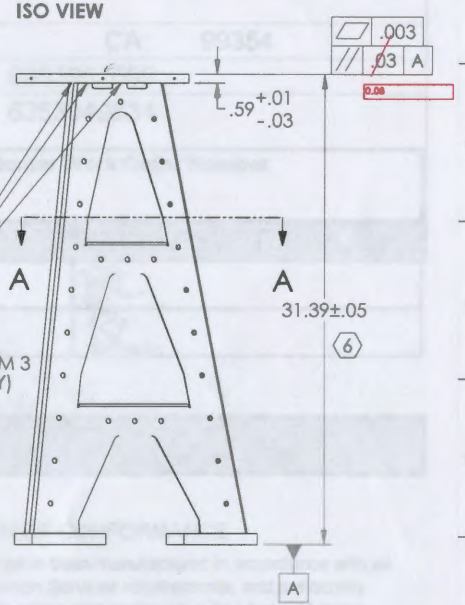
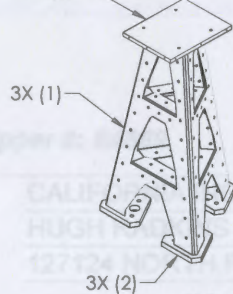
③ WARPAGE OF ITEM 2, 3, & FOOTING TO BE MINIMIZED USING PREFERRED METHODS, E. HEAT SINKING.



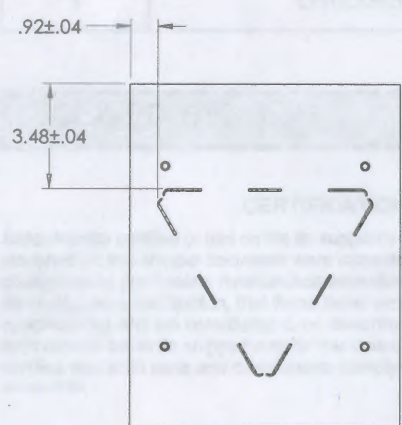
FILLET WELD ALL ITEM 1 / ITEM 2 INTERFACES (OUTSIDE ONLY) ALL THREE LOCATIONS  
 SECTION A-A



3 VERTICAL SEAMS. INTERNAL & EXTERNAL INCLUDE ENDS



FILLET WELD ALL ITEM 1 / ITEM 3 INTERFACES (OUTSIDE ONLY) ALL THREE LOCATIONS



SECTION B-B

ITEM NO.	PART NUMBER	DESCRIPTION	MATERIAL	QTY	SPARE TOTAL
3	D1001851-1	ALIGO AOS OPLEV TRX PIER TABLE (HAM)	304 SSSL	1	0
2	D1000426	ALIGO AOS PER BASE 1	304 SSSL	3	0
1	D1001853	ALIGO AOS OPLEV TRX PIER SIDE PANEL (HAMALLO)	304 SSSL	3	0

NOTES AND TOLERANCES: (UNLESS OTHERWISE SPECIFIED)  
 1. INTERPRET DRAWING PER ASME Y14.5-1994.  
 2. REMOVE ALL SHARP EDGES: R.02 MIN.  
 3. DO NOT SCALE FROM DRAWING.  
 DIMENSIONS ARE IN INCHES  
 TOLERANCES:

SYSTEM		SUB-SYSTEM		PART NAME		DESIGNER		CHECKER		APPROVAL	
ADVANCED LIGO		AOS		ALIGO AOS OPLEV TRX PIER WELDMENT (HAM)		C. CONLEY		M. PATRICE		D	
NEXT ASSY		D1001851		SCALE: 1:4		PROJECTION:		SHEET 1 OF 1		REV. 1	

3-OL-Foot1-D1000434-28

831601

3-OL-Foot1-D1000434-31

831602

3-OL-Foot1-D1000434-17

831603

3-OL-TRX-D1001854-1-HAM2

831501

3-OL-TRX-D1001854-6 -HAM3

831502

3-OL-TRX-D1001854-9-HAM4

831503

3-OL-TRX-D1001854-11-HAM5

831504

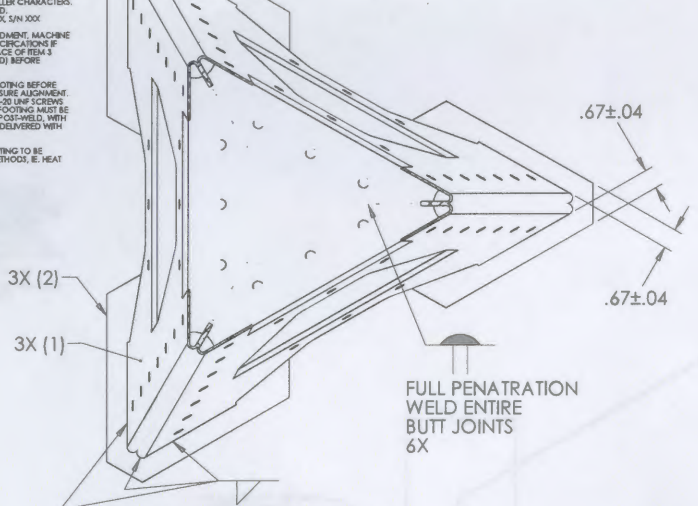
SN 6, 9, 11 for JIFO  
 ICS Part Record  
 behind drawing

EXAMPLE: D10000452-7, TYPE 20, S/N XXX

⑦ AFTER COMPLETION OF THE WELDMENT, MACHINE AT TOP OF ITEM 3 TO MORE SPECIFICATIONS IF NECESSARY. LEVEL THE UPPER FACE OF ITEM 3 SQUARE WITH MACHINING HEAD BEFORE MACHINING.

⑧ FASTEN ITEM 2 TO D1000434 FOOTING BEFORE APPLYING NOTED WELDS. TO ENSURE ALIGNMENT, FOR EACH ITEM 2, USE THREE 1/2-20 UNF SCREWS TO TAPPED HOLES IN FOOTING. FOOTING MUST BE REMOVABLE & RE-ATTACHABLE POST-WELD, WITH NO BENDING OF SCREWS. TO BE DELIVERED WITH FOOTING ATTACHED.

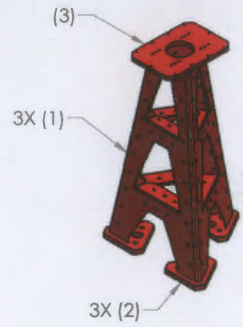
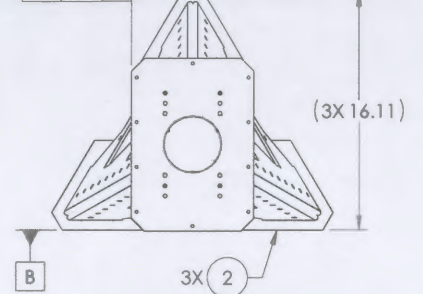
⑨ WARPAGE OF ITEMS 2, 3, & FOOTING TO BE MINIMIZED USING PREFERRED METHOD, I.E. HEAT SINKING.



FILLET WELD ALL ITEM 1 / ITEM 2 INTERFACES (OUTSIDE ONLY) ALL THREE LOCATIONS

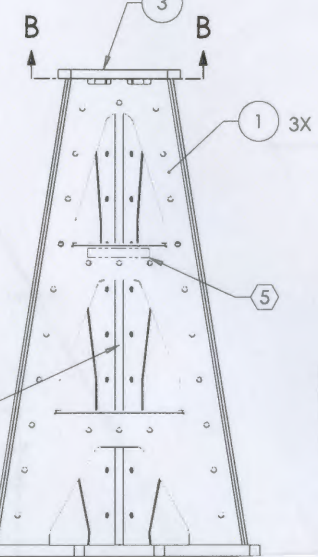
7 8

SECTION A-A



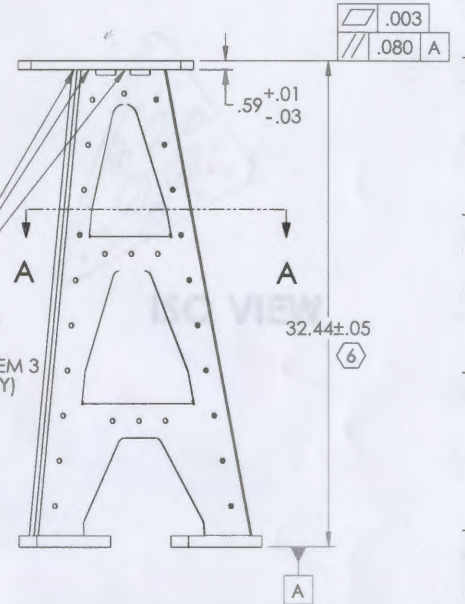
Storage Load  
6038

FULL PENETRATION WELD ENTIRE BUTT JOINTS 6X



FILLET WELD ALL ITEM 1 / ITEM 3 INTERFACES (OUTSIDE ONLY) ALL THREE LOCATIONS

8

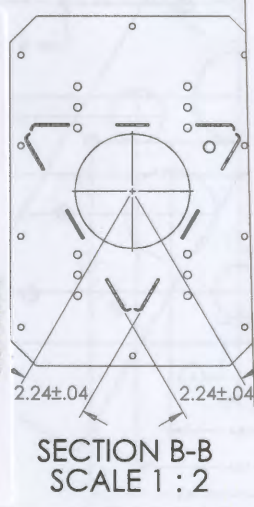


3-OL-TX-D1000452-2-TM

831521

3-OL-TX-D1000452-7-TM

831522



3-OL-TX-D1000452-8-TM

831523

3-OL-TX-D1000452-9-TM

821524

DIMENSIONS ARE IN INCHES

TOLERANCES:  
XX ± N/A  
XXX ± N/A

ANGULAR ± N/A\*

NOTES AND TOLERANCES (UNLESS OTHERWISE SPECIFIED)

1. INTERPRET DRAWING PER ASME Y14.5-1994.
2. REMOVE ALL SHARP EDGES, R.02 MIN.
3. DO NOT SCALE FROM DRAWING.
4. ALL MACHINING FLUIDS MUST BE FULLY SYNTHETIC, FULLY WATER SOLUBLE AND FREE OF SULFUR, SILICONE, AND CHLORINE.

MATERIAL N/A FINISH N/A μinch

CALIFORNIA INSTITUTE OF TECHNOLOGY  
MASSACHUSETTS INSTITUTE OF TECHNOLOGY

SYSTEM ADVANCED LIGO SUB-SYSTEM AOS

NEXT ASSY D1001335 D1001339

ITEM NO.	PART NUMBER	DESCRIPTION	MATERIAL	REQ.	SPARE	TOTAL
3	D1000425	ALIGO AOS OPLEV TX PIER TABLE (TM)	304 SSSL	1		1
2	D1000426	ALIGO AOS PIER BASE 1	304 SSSL	3		3
1	D1001655	ALIGO AOS OPLEV TX PIER SIDE PANEL (TM-LLO)	304 SSSL	3		3

PART NAME		ALIGO AOS	
Oplev Tx Pier Weldment (TM)		DESIGNER	C. CONLEY
		DATE	28 JAN 2010
		SIZE	D
		DWG. NO.	D1000452
		REV.	v2
		SCALE	1:4
		PROJECTION	
		SHEET 1 OF 1	

Located at X Mid - VEA Termination slab

SN 02 has no crate

SN 27, 8, 9 for ZIFO ICS Part Record behind drawing

3-OL-Foot1-D1000434-16

831609

3-OL-Foot1-D1000434-29

831610

3-OL-Foot1-D1000434-33

831611

3-OL-Foot1-D1000434-XX

831608

DIMENSIONS ARE IN INCHES

TOLERANCES:

1. INTERPRET DRAWING PER ASME Y14.5-1994.

2. REMOVE ALL SHARP EDGES, R.02 MIN.
3. DO NOT SCALE FROM DRAWING.
4. ALL MACHINING FLUIDS MUST BE FULLY SYNTHETIC, FULLY WATER SOLUBLE

CALIFORNIA INSTITUTE OF TECHNOLOGY  
MASSACHUSETTS INSTITUTE OF TECHNOLOGY

SYSTEM SUB-SYSTEM

PART NAME		PIER FOOTING 1	
Oplev Tx Pier Weldment (TM)		DESIGNER	C. CONLEY
		DATE	16 JUNE 2009
		SIZE	D
		DWG. NO.	D1000434
		REV.	v3
		SCALE	1:2
		PROJECTION	
		SHEET 1 OF 1	

SN 16, 29, 33 for ZIFO ICS Part Record behind drawing



➔ **REDUX** -- version 2.0.18.3 - released 3-February-2012 @ 11:00 AM CST ➔

Questions: ics-help@ligo-la.caltech.edu

3-OL-TX-D1000452-7-TM



831522

3-OL-Foot1-D1000434-16



831609

### Status

**Key:** D1000452-V1-00-0007  
**Type:** LIGO Part Record  
**Date:** 09/Jan/13  
**Created:**  
**Created:** jodi.fauver@ligo.org  
**Subsystem:** Auxilliary Optics (AOS)  
**Subsystem Lead:** eric.gustafson@ligo.org  
**Current Status:** Entered  
**Progress:**  Cleaned  
 Baked  
 Assembled

**Watchers :** 0

### Attributes

**Part Name :** OpLev TRX Pier Weldment (TM)  
**Description:**  
**Site:** LHO  
**Location:** 3IFO-XMid  
**Sub-Location:** VEA-Termination Slab  
**Drawing:** D1000452  
**Rev:** V1  
**Type:** 0  
**Serial # :** 7  
**Manufacturer :** Aeroshear Aviation Services  
**Supplier :**  
**Material :** SS  
**Property Tag :**  
**PO # :** 75-ADV-S105850

### Attachment's:



3IFO-OpLev Tx Weldment  
 TM-D1000452-07.JPG [Delete](#)



Add Image

### Operations

**Manage Record:**

[Edit Record](#)

[Add Comment](#)

[Watch this record](#)

**Create Record:**

### Hierarchy

No Hierarchy data found.

REDUX - version 2.0.18.3 - released 3-February-2012 @ 11:00 AM CST

3-OL-TX2-D1001301-6-SR3

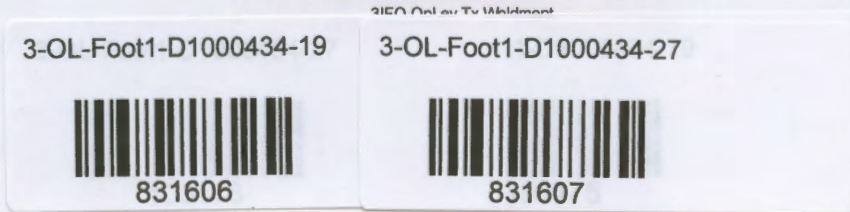
**Status**

Key: D1001301-V1-00-0006  
 Type: LIGO Part Record  
 Date: 09/Jan/13  
 Created:  
 Created: jodi.fauyer@ligo.org  
 Subsystem: Auxilliary Optics (AOS)  
 Subsystem Lead: eric.gustafson@ligo.org  
 Current Status: Entered  
 Progress:  Cleaned  
 Baked  
 Assembled

Watchers : 0

**Attributes**

Part Name : Oplev TX Pier Weldment (PR3,SR3)  
 Description:  
 Site: LHO  
 Location: 3IFO-XMid  
 Sub-Location: VEA-Termination Slab  
 Drawing: D1001301  
 Rev: V1  
 Type: 0  
 Serial # : 6  
 Manufacturer : Aeroshear Aviation Services  
 Supplier :  
 Material : SS  
 Property Tag :  
 PO # : 75-ADV-S105850  
 Attachment/s:



**Operations**

**Manage Record:**

- [Edit Record](#)
- [Add Comment](#)
- [Watch this record](#)

**Create Record:**

- [Defect or Issue Record](#)
- [Inspection Record](#)
- [Modification Record](#)
- [Test Record](#)

**Create Load:**

- [Bake](#)
- [Clean](#)
- [Shipment](#)
- [Storage](#)

**Hierarchy**

No Hierarchy data found.

**History**

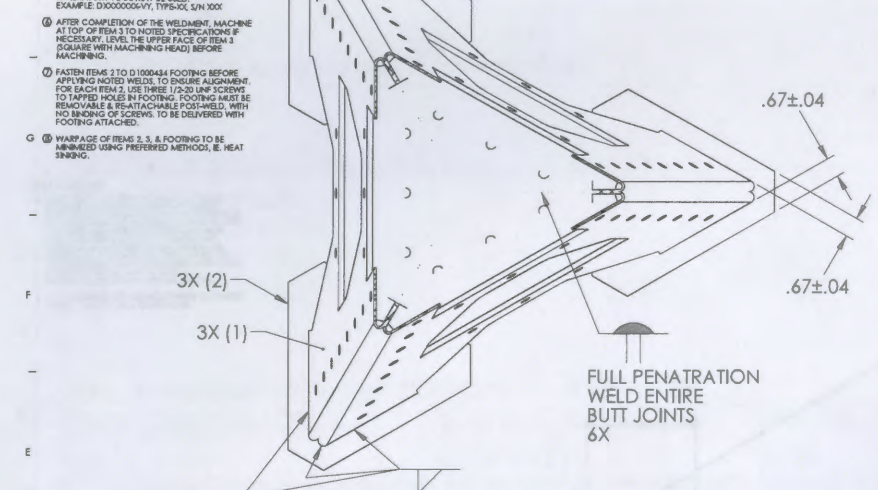
All	Comments	Transactions	Record Edits	Loads	Inspections	Tests	Part Mods	Defects
Date	Title	Linked ID	Status	Site				
08/Apr/13	Storage Load	<a href="#">Storage-6038</a>	Entered	LHO				

MINIMUM 0.12" HIGH CHARACTERS, UNLESS THE SIZE OF THE PART INDICATES SMALLER CHARACTERS. A VIBRATORY TOOL MAY BE USED. EXAMPLE: 0100000000V, TYPE:DC SUN 100"

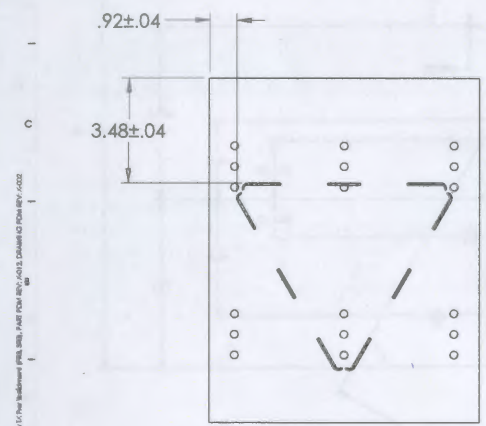
④ AFTER COMPLETION OF THE WELDING, MACHINE AT TOP OF ITEM 3 TO NOTED SPECIFICATIONS IF NECESSARY. LEVEL THE UPPER FACE OF ITEM 3 (SQUARE WITH MACHINING HEAD) BEFORE MACHINING.

⑤ FASTEN ITEMS 2 TO D100044 FOOTING BEFORE APPLYING NOTED WELDS. TO ENSURE ALIGNMENT, FOR EACH ITEM 2, USE THREE 1/2-20 UNF SCREWS TO TAPPED HOLES IN FOOTING. FOOTING MUST BE REMOVABLE & RE-ATTACHABLE POST-WELDED, WITH NO BONDING OF SCREWS. TO BE DELIVERED WITH FOOTING ATTACHED.

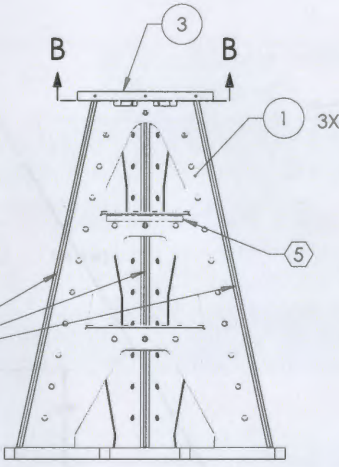
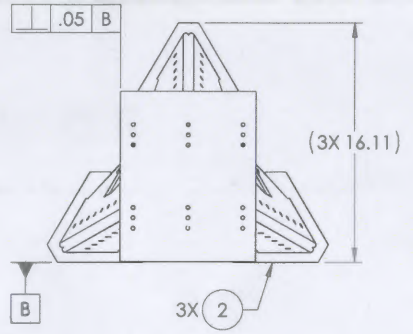
⑥ WARPAGE OF ITEMS 2, 3, & FOOTING TO BE MINIMIZED USING PRESSURED METHOD, E. HEAT SINKING.



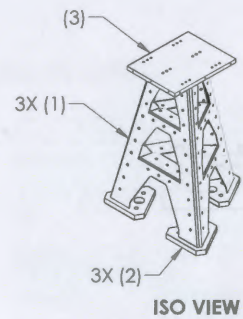
FILLET WELD ALL ITEM 1 / ITEM 2 INTERFACES (OUTSIDE ONLY) ALL THREE LOCATIONS  
 SECTION A-A



SECTION B-B  
 SCALE 1 : 2

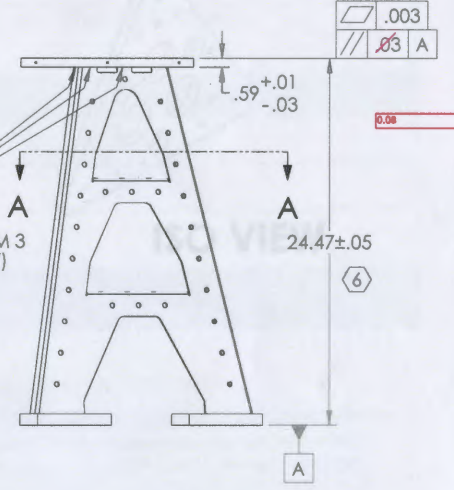


1-2  
 3/8-2  
 3 VERTICAL SEAMS. INTERNAL & EXTERNAL INCLUDE ENDS



ISO VIEW

FILLET WELD ALL ITEM 1 / ITEM 3 INTERFACES (OUTSIDE ONLY) ALL THREE LOCATIONS  
 SECTION A-A



3-OL-TX2-D1001301-5-PR3



3-OL-TX2-D1001301-6-SR3



ITEM NO.	PART NUMBER	DESCRIPTION	MATERIAL	REQ	SPARE	TOTAL
3	D1001611-2	ALIGO AOS OPLEV TX PIER PANEL (H4M)	304 S316	1		1
2	D1000426	ALIGO AOS PIER BASE 1	304 S316	3		3
1	D1001857	ALIGO AOS OPLEV TX PIER SIDE PANEL (PR3, SR3)	304 S316	3		3

DIMENSIONS ARE IN INCHES		TOLERANCES: XX ± N/A XXX ± N/A		ANGULAR ± N/A*		MATERIAL		FINISH		NEXT ASSY		SYSTEM		PART NAME		DESIGNER		DRAFTER		CHECKER		APPROVAL	
1. INTERPRET DRAWING PER ASME Y14.5-1994. 2. REMOVE ALL SHARP EDGES, R.02 MIN. 3. DO NOT SCALE FROM DRAWING. 4. ALL MACHINING FLUIDS MUST BE FULLY SYNTHETIC, FULLY WATER SOLUBLE AND FREE OF SULFUR, SILICONE, AND CHLORINE.		N/A		N/A μinch		N/A		N/A μinch		D1001334		CALIFORNIA INSTITUTE OF TECHNOLOGY MASSACHUSETTS INSTITUTE OF TECHNOLOGY		ALIGO AOS OPLEV TX PIER WELDMENT (PR3, SR3)		C. COMLEY		N. ELPATRICK					

Located at XMid - VEA

SN 5, 6 for 3IFO ICS Part Record behind drawing

3-OL-Foot1-D1000434-21



3-OL-Foot1-D1000434-32



3-OL-Foot1-D1000434-19



3-OL-Foot1-D1000434-27




DIMENSIONS ARE IN INCHES		TOLERANCES: 1. INTERPRET DRAWING PER ASME Y14.5-1994. 2. REMOVE ALL SHARP EDGES, R.02 MIN.		ANGULAR ± N/A*		MATERIAL		FINISH		NEXT ASSY		SYSTEM		PART NAME		DESIGNER		DRAFTER		CHECKER		APPROVAL	
												CALIFORNIA INSTITUTE OF TECHNOLOGY MASSACHUSETTS INSTITUTE OF TECHNOLOGY		PIER FOOTING 1		C. COMLEY		N. ELPATRICK					

SN 1, 21, 27, 32 for 3IFO ICS Part Record behind drawing

REDUX -- version 2.0.18.3 - released 3-February-2012 @ 11:00 AM CST Questions: ics-help@ligo-la.caltech.edu

3-OL-TX-D1000452-8-TM



831523

3-OL-Foot1-D1000434-33



831611

Status

Key: D1000452-V1-00-0008  
 Type: LIGO Part Record  
 Date: 09/Jan/13  
 Created:  
 Created: jodi.fauver@ligo.org  
 Subsystem: Auxilliary Optics (AOS)  
 Subsystem: eric.gustafson@ligo.org  
 Lead:  
 Current: Entered  
 Status:  
 Progress:  Cleaned  
 Baked  
 Assembled  
 Watchers: 0

Attributes

Part Name : OpLev TRX Pier  
 Weldment (TM)  
 Description:  
 Site: LHO  
 Location: 3IFO-XMid  
 Sub-Location: VEA-Termination Slab  
 Drawing: D1000452  
 Rev: V1  
 Type: 0  
 Serial # : 8  
 Manufacturer : Aeroshear Aviation  
 Services  
 Supplier :  
 Material : SS  
 Property Tag :  
 PO # : 75-ADV-S105850

Attachment/s:



3IFO-OpLev Tx Weldment TM-D1000452-08.JPG [Delete](#)

Add Image

REDUX -- version 2.0.18.3 - released 3-February-2012 @ 11:00 AM CST

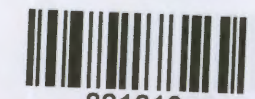
Questions: ics-help@ligo-la.caltech.edu

3-OL-TX-D1000452-9-TM



821524

3-OL-Foot1-D1000434-29



831610

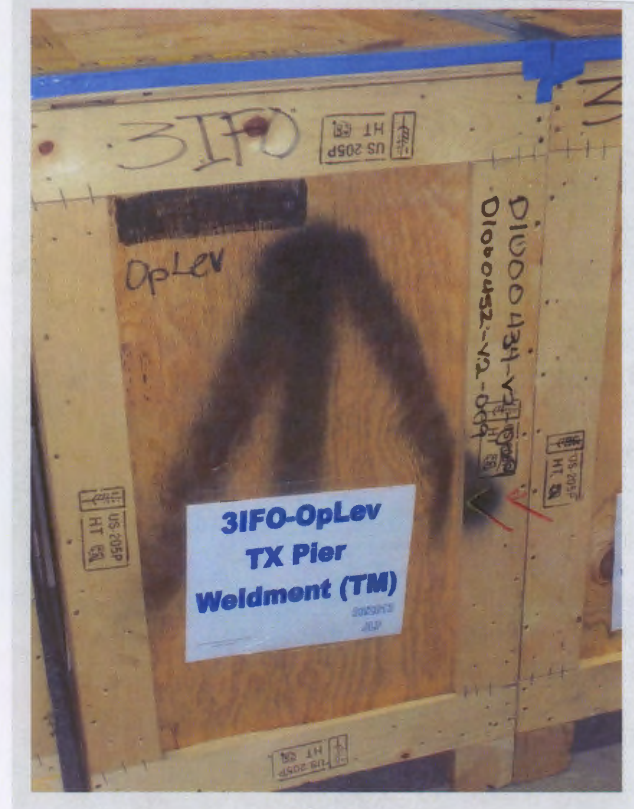
Status

Key: D1000452-V1-00-0009  
 Type: LIGO Part Record  
 Date: 09/Jan/13  
 Created:  
 Created: jodi.fauver@ligo.org  
 Subsystem: Auxilliary Optics (AOS)  
 Subsystem Lead: eric.gustafson@ligo.org  
 Current Status: Entered  
 Progress:  Cleaned  
            Baked  
            Assembled  
 Watchers : 0

Attributes

Part Name : OpLev TRX Pier Weldment (TM)  
 Description:  
 Site: LHO  
 Location: 3IFO-XMid  
 Sub-Location: VEA-Termination Slab  
 Drawing: D1000452  
 Rev: V1  
 Type: 0  
 Serial # : 9  
 Manufacturer : Aeroshear Aviation Services  
 Supplier :  
 Material : SS  
 Property Tag :  
 PO # : 75-ADV-S105850

Attachment's:



3IFO-OpLev Tx Weldment  
 TM-D1000452-09.JPG [Delete](#)



Add Image

REDUX -- version 2.0.18.3 - released 3-February-2012 @ 11:00 AM CST

ligo-la.caltech.edu

## 3-PCal-LH Leaner-D1001297-5



100161

## Status

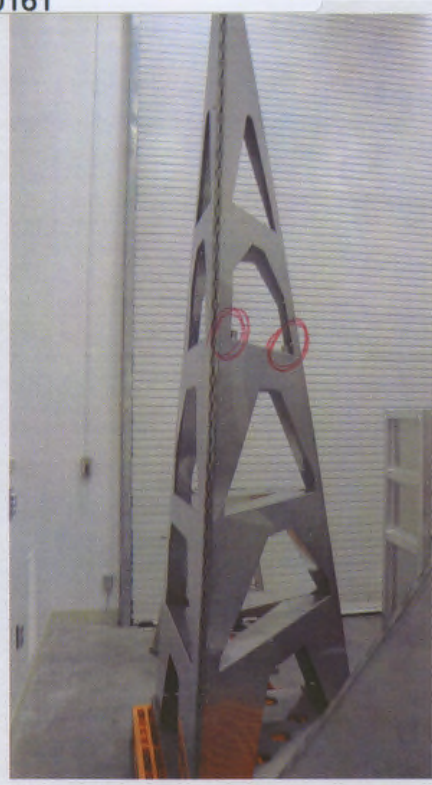
**Key:** D1001297-V1-00-0005  
**Type:** LIGO Part Record  
**Date:** 10/Jan/13  
**Created:**  
**Created:** jodi.fauver@ligo.org  
**Subsystem:** Auxilliary Optics (AOS)  
**Subsystem Lead:** eric.gustafson@ligo.org  
**Current Status:** Entered  
**Progress:**  Cleaned  
 Baked  
 Assembled

**Watchers :** 0

## Attributes

**Part Name :** aLIGO AOS Optev and  
 PhotCal RX Pier  
 Weldment RH  
**Description:**  
**Site:** LHO  
**Location:** 3IFO-XMid  
**Sub-Location:** VEA-Behind Beamtube  
**Drawing:** D1001297  
**Rev:** V1  
**Type:** 0  
**Serial # :** 5  
**Manufacturer :** Aeroshear Aviation  
 Services  
**Supplier :**  
**Material :** SS  
**Property Tag :**  
**PO # :** 75-ADV-S105850

**Attachment/s:**



D1001297-v1-02-005-All.JPG

[Delete](#)

Add Image

## Operations

**Manage Record:**

[Edit Record](#)  
[Add Comment](#)  
[Watch this record](#)

**Create Record:**

[Defect or Issue Record](#)  
[Inspection Record](#)  
[Modification Record](#)  
[Test Record](#)

**Create Load:**

[Bake](#)  
[Clean](#)  
[Shipment](#)  
[Storage](#)

## Hierarchy

No Hierarchy data found.

## History

3-PCal-RH Leaner-D1001292-2



Status

**Key:** D1001292-V1-02-0002  
**Type:** LIGO Part Record  
**Date:** 10/Jan/13  
**Created:**  
**Created:** jodi.fauver@ligo.org  
**Subsystem:** Auxilliary Optics (AOS)  
**Subsystem Lead:** eric.gustafson@ligo.org  
**Current Status:** Entered  
**Progress:**  Cleaned  
 Baked  
 Assembled  
**Watchers:** 0

Attributes

**Part Name:** aLIGO AOS OpLev an  
 PhotCal RX Pier  
 Weldment LH  
**Description:**  
**Site:** LHO  
**Location:** 3IFO-XMid  
**Sub-Location:** VEA-Behind Beamtube  
**Drawing:** D1001292  
**Rev:** V1  
**Type:** 02  
**Serial #:** 0002  
**Manufacturer:** Aeroshear Aviation  
 Services  
**Supplier:**  
**Material:** SS  
**Property Tag:**  
**PO #:** 75-ADV-S105850  
**Attachment/s:**



D1001292-v1-02-002-All.JPG

Delete



Add Image

Operations

Manage Record:

- [Edit Record](#)
- [Add Comment](#)
- [Watch this record](#)

Create Record:

- [Defect or Issue Record](#)
- [Inspection Record](#)
- [Modification Record](#)
- [Test Record](#)

Create Load:

- [Bake](#)
- [Clean](#)
- [Shipment](#)
- [Storage](#)

Hierarchy

No Hierarchy data found.

History

**Status**


**Key:** D1001854-V1-00-0006  
**Type:** LIGO Part Record  
**Date:** 09/Jan/13  
**Created:**  
**Created:** jodi.fauver@ligo.org  
**Subsystem:** Auxilliary Optics (AOS)  
**Subsystem Lead:** eric.gustafson@ligo.org  
**Current Status:** Entered  
**Progress:**  Cleaned  
 Baked  
 Assembled  
**Watchers :** [0](#)

**Attributes**

**Part Name :** Oplev TRX Pier Weldment (HAM)  
**Description:**  
**Site:** LHO  
**Location:** 3IFO-XMid  
**Sub-Location:** VEA-Termination Slab  
**Drawing:** D1001854  
**Rev:** V1  
**Type:** 0  
**Serial # :** 6  
**Manufacturer :** Aeroshear Aviation Services  
**Supplier :**  
**Material :** SS  
**Property Tag :**  
**PO # :** 75-ADV-S105850


**Attachment/s:**

3-OL-TRX-D1001854-1-HAM2



831501

3-OL-Foot1-D1000434-28



831601



3IFO-OpLev Tx Weldment  
 HAM-D1001854-06.JPG [Delete](#)



Add Image

**Operations**

**Manage Record:**  
[Edit Record](#)  
[Add Comment](#)  
[Watch this record](#)  
**Create Record:**

**Hierarchy**

No Hierarchy data found.



**REDUX** -- version 2.0.18.3 - released 3-February-2012 @ 11:00 AM CST

Questions: [ics-help@ligo-la.caltech.edu](mailto:ics-help@ligo-la.caltech.edu)

3-OL-TRX-D1001854-9-HAM4



831503

3-OL-Foot1-D1000434-31



831602

**Status**

**Key:** D1001854-V1-00-0009  
**Type:** LIGO Part Record  
**Date:** 09/Jan/13  
**Created:**  
**Created:** jodi.fauver@ligo.org  
**Subsystem:** Auxilliary Optics (AOS)  
**Subsystem Lead:** eric.gustafson@ligo.org  
**Current Status:** Entered  
**Progress:**  Cleaned  
 Baked  
 Assembled  
**Watchers :** 0

**Attributes**

**Part Name :** Oplev TRX Pier Weldment (HAM)  
**Description:**  
**Site:** LHO  
**Location:** 3IFO-XMid  
**Sub-Location:** VEA-Termination Slab  
**Drawing:** D1001854  
**Rev:** V1  
**Type:** 0  
**Serial # :** 9  
**Manufacturer :** Aeroshear Aviation Services  
**Supplier :**  
**Material :** SS  
**Property Tag :**  
**PO # :** 75-ADV-S105850

**Attachment/s:**



3IFO-OpLev Tx Weldment  
 HAM-D1001854-09.JPG [Delete](#)



Add Image

REDUX -- version 2.0.18.3 - released 3-February-2012 @ 11:00 AM CST

Questions: ics-help@ligo-la.caltech.edu

3-OL-TRX-D1001854-11-HAM5

3-OL-Foot1-D1000434-17



Status

Key: D1001854-V1-00-0011  
 Type: LIGO Part Record  
 Date: 09/Jan/13  
 Created: jodi.fauver@ligo.org  
 Subsystem: Auxilliary Optics (AOS)  
 Subsystem Lead: eric.gustafson@ligo.org  
 Current Status: Entered  
 Progress:  Cleaned  
            Baked  
            Assembled  
 Watchers: 0

Attributes

Part Name : Oplev TRX Pier Weldment (HAM)  
 Description:  
 Site: LHO  
 Location: 3IFO-XMid  
 Sub-Location: VEA-Termination Slab  
 Drawing: D1001854  
 Rev: V1  
 Type: 0  
 Serial # : 11  
 Manufacturer : Aeroshear Aviation Services  
 Supplier :  
 Material : SS  
 Property Tag :  
 PO # : 75-ADV-S105850

Attachment's:



3IFO-Oplev Tx Weldment  
 HAM-D1001854-11.JPG [Delete](#)



Add Image