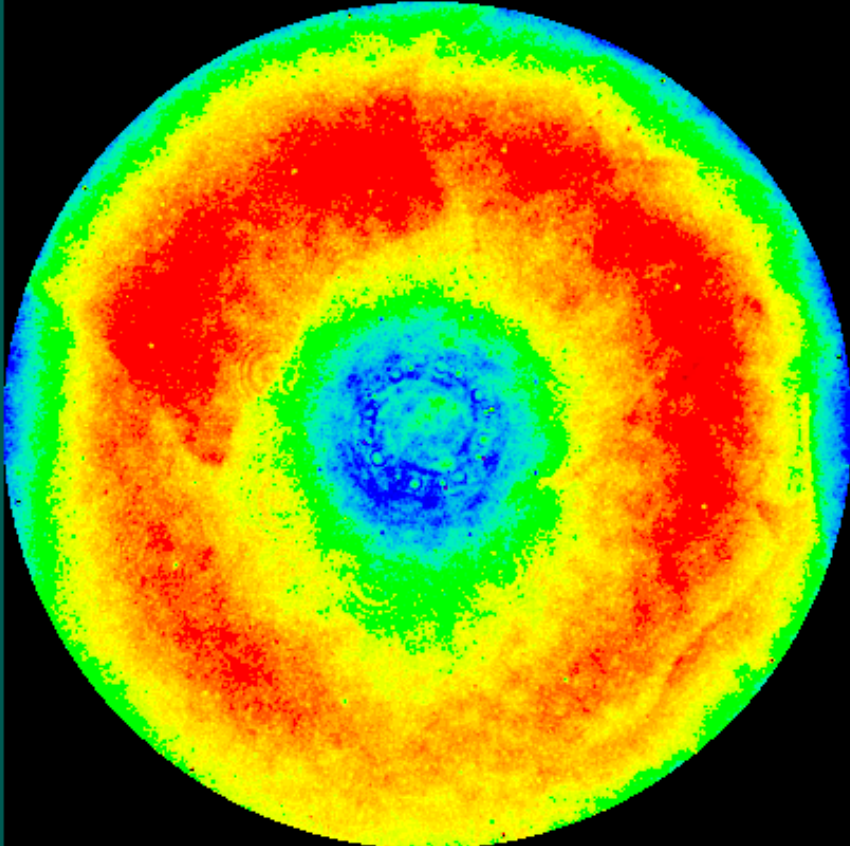


LIGO

ETM10 S1 160 mm diameter -power



PV	3.710	nm	Removed: PST TLT PWR
rms	0.562	nm	Trimmed: 0
Power	0.103	nm	Filter: Off
Size X	160.4	mm	Size Y 160.4 mm
Tiltx	-0.519	nm	Tref.X 0.079 nm
Tilty	-1.185	nm	Tref.Y -0.014 nm
Ast.X	-0.084	nm	2Ast.X -0.278 nm
Ast.Y	-0.043	nm	2Ast.Y 0.004 nm
ComaX	-0.075	nm	2ComaX 0.020 nm
ComaY	-0.464	nm	2ComaY -0.001 nm
Sph Ab	-1.100	nm	2Sph Ab 0.248 nm