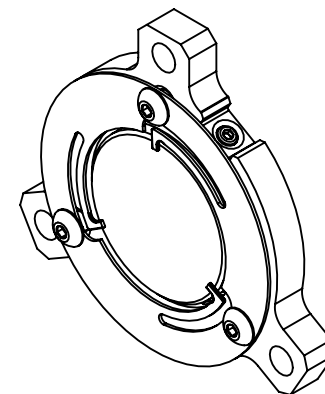
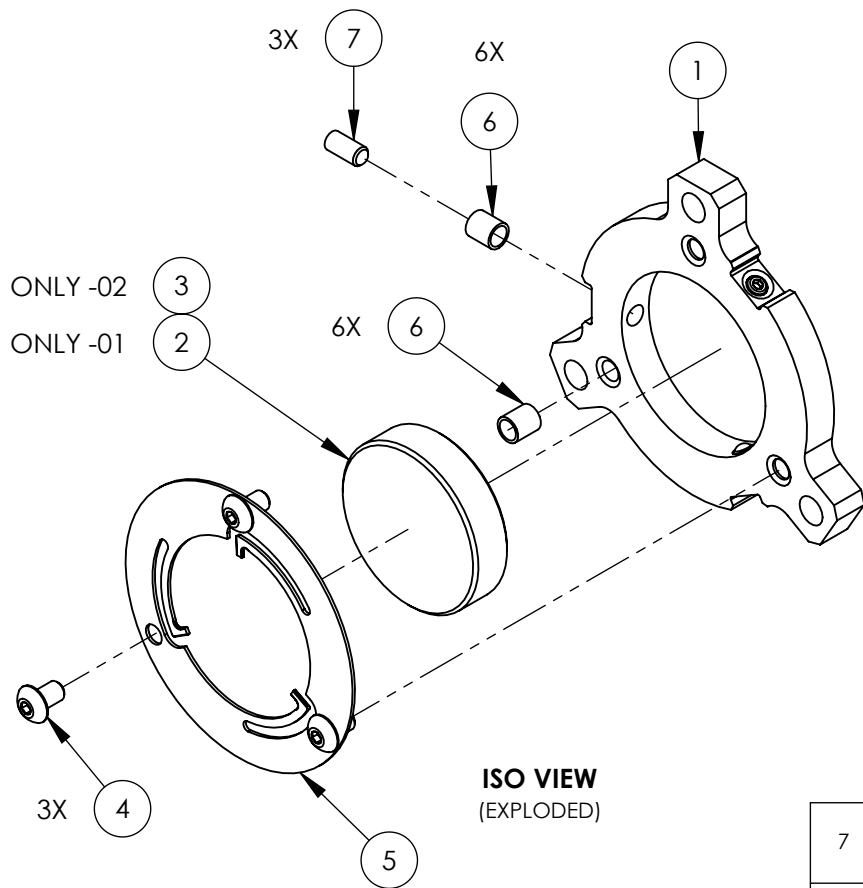


REV.	DATE	DCN #	DRAWING TREE #
v1	10 OCT 2016	E1600209-x0	-
v4	03 APR 2017	E1700061-x0	-
-	-	-	-



ISO VIEW
(EXPLODED)

ISO VIEW
(-01 SHOWN, ASSEMBLED)

7	99553A148 McMASTER-CARR OR EQ.	SET SCREW, 4-40 X .25 Lg. (OVAL TIP)	316 SSSL	3	3
6	1185-04EN168 EMHART OR EQ.	HELI-COIL #4-40 x .168"	NITRONIC 60	6	6
5	906919-02 NEWPORT OR EQ.	MIRROR MT. SPRING PLATE	6061-T6 Al	1	1
4	98164A429 McMASTER-CARR OR EQ.	SCREW, BHSC, 4-40 X 3/16"	316 SSSL	3	3
3	TBD	1" MIRROR, CURVED	-	-	1
2	TBD	1" MIRROR, FLAT	-	1	-
1	D1600233	aLIGO, PSL, PreMode Cleaner, 1in. Mirror MT.	6061-T6 Al	1	1
ITEM NO.	PART NUMBER	DESCRIPTION	MATERIAL	QTY. -01	QTY. -02

PARTS LIST

NOTES AND TOLERANCES: (UNLESS OTHERWISE SPECIFIED)

MATERIAL: N/A
FINISH: N/A μinch

LIGO CALIFORNIA INSTITUTE OF TECHNOLOGY
MASSACHUSETTS INSTITUTE OF TECHNOLOGY
SYSTEM: **ADVANCED LIGO**
SUB-SYSTEM: **PSL**
NEXT ASSY: **D1600270**

PART NAME: **aLIGO, PSL, PreMode Cleaner, 1" Mirror Assembly**
DESIGNER: E.SANCHEZ 07 JUN 2016
DRAFTER: E.SANCHEZ 15 SEP 2016
CHECKER: SEE DCC SEE DCC
APPROVAL: SEE DCC SEE DCC
SIZE: **A** DWG. NO.: **D1600243**
REV.: **v4**
SCALE: 1:1 PROJECTION: SHEET 1 OF 1